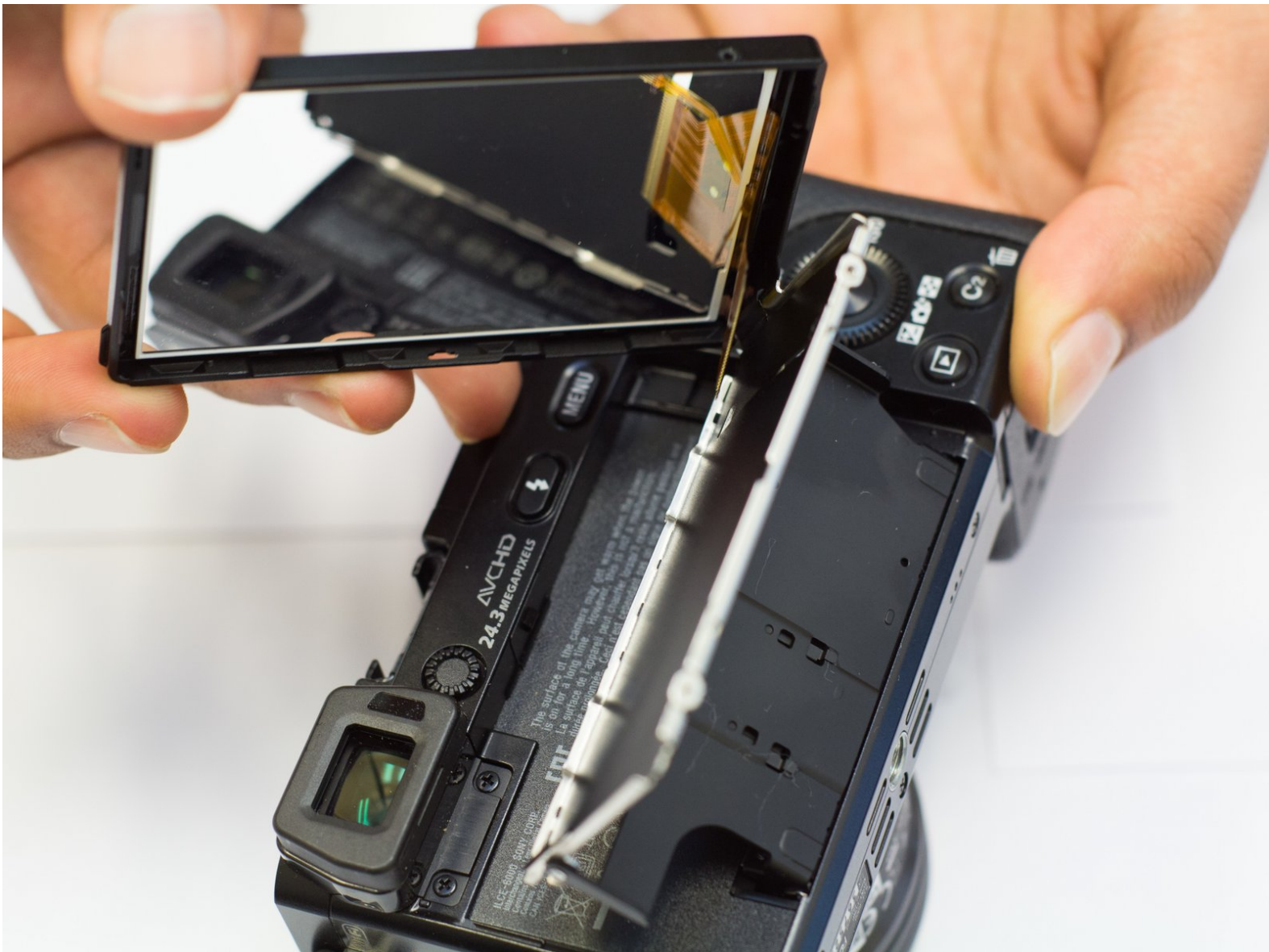




Sony Alpha ILCE-6000 Screen Replacement

If your screen is cracked, smashed or stopped working, this guide will help you replace the screen for the Sony Alpha ILCE-6000

Written By: Tony Au



INTRODUCTION

If your screen is cracked, smashed or stopped working, this guide will help you replace the screen for the Sony Alpha ILCE-6000



TOOLS:

- [Phillips #00 Screwdriver](#) (1)
 - [Phillips 0000 Screwdriver](#) (1)
 - [iFixit Opening Tools](#) (1)
 - [Tweezers](#) (1)
-

Step 1 — Battery Replacement



- Turn off the camera by sliding the power switch to OFF.

Step 2



- Flip the camera upside down and locate the battery compartment.
- Slide the compartment lock to OPEN to unlock it.

Step 3



- Locate the blue lever that keeps the battery in place.
- Push the blue lever back to release battery.

Step 4



- Once the battery is free, you are able to take the battery out of the compartment.

Step 5 — Screen



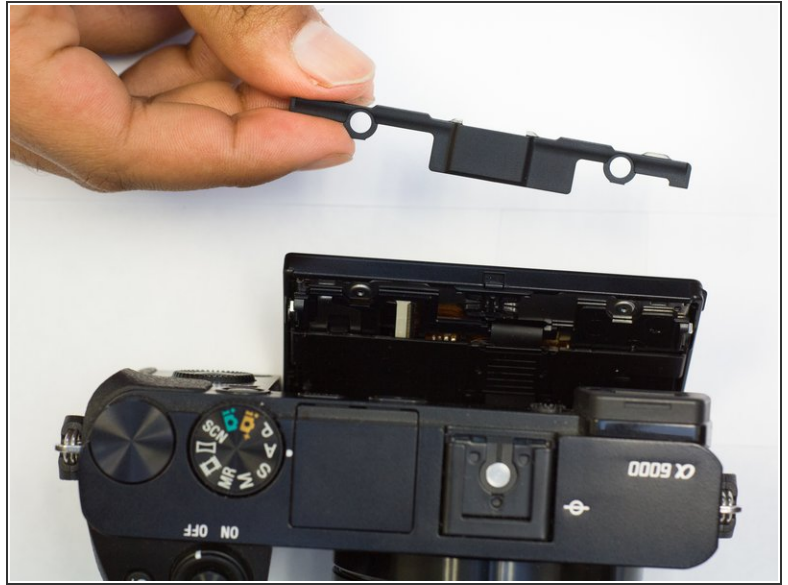
- Flip the camera to the bottom side. Using screwdriver, remove the two screws located on the bottom of camera screen.
- Flip the camera back over, locate the two other 3mm screws behind the screen and remove them.

Step 6



- Gently pry open the screen backplate.

Step 7



- Gently pry off the plastic cover at the top of the screen.

Step 8



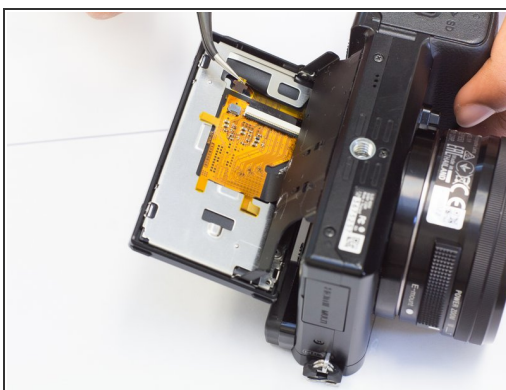
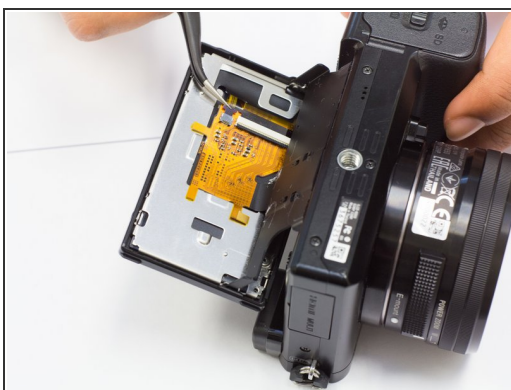
- Carefully remove the clip located at the top of the screen.

Step 9



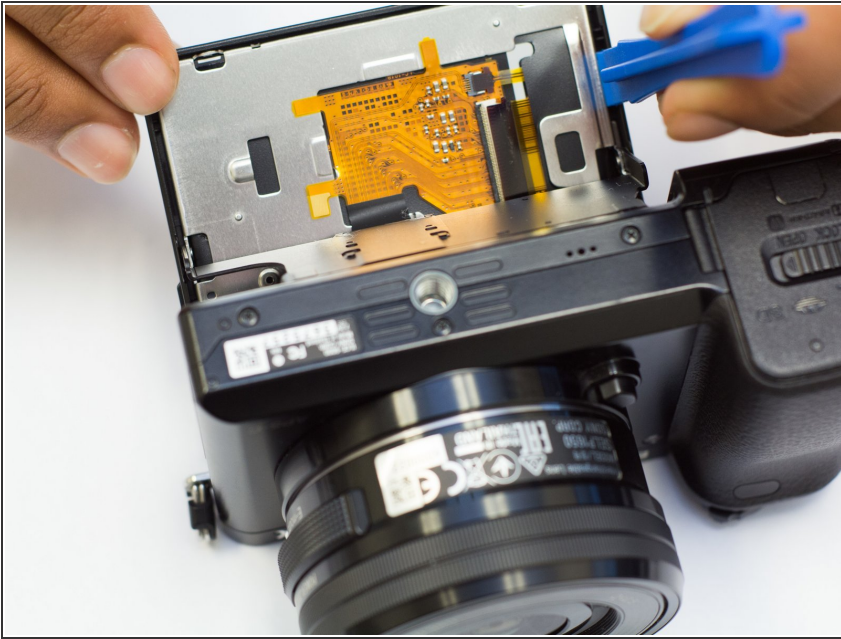
- Flip the camera so that it is bottom side up. Pry off the inner support plate.

Step 10



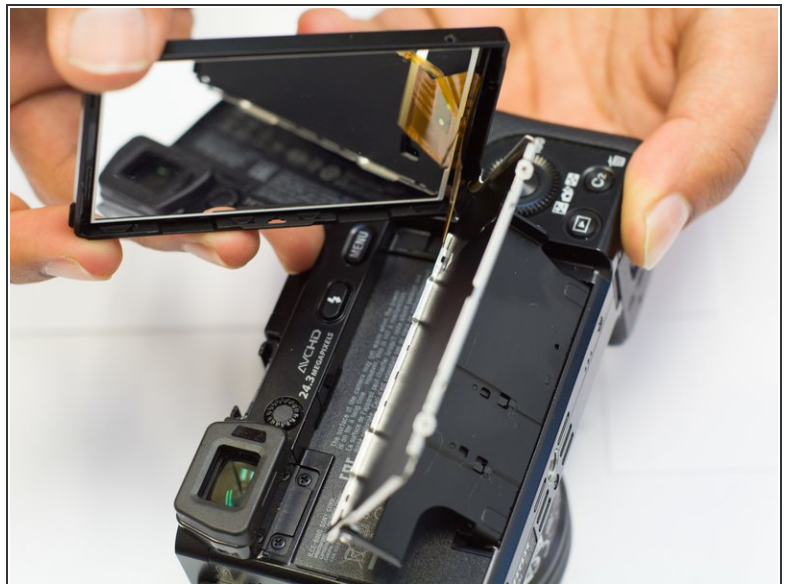
- Gently wiggle the screen's ribbon cable until it comes free from the white slot.

Step 11



- Pry apart the metal backplate and remove it.

Step 12



- Gently remove the old screen, and replace it with the new one.

To reassemble your device, follow these instructions in reverse order.