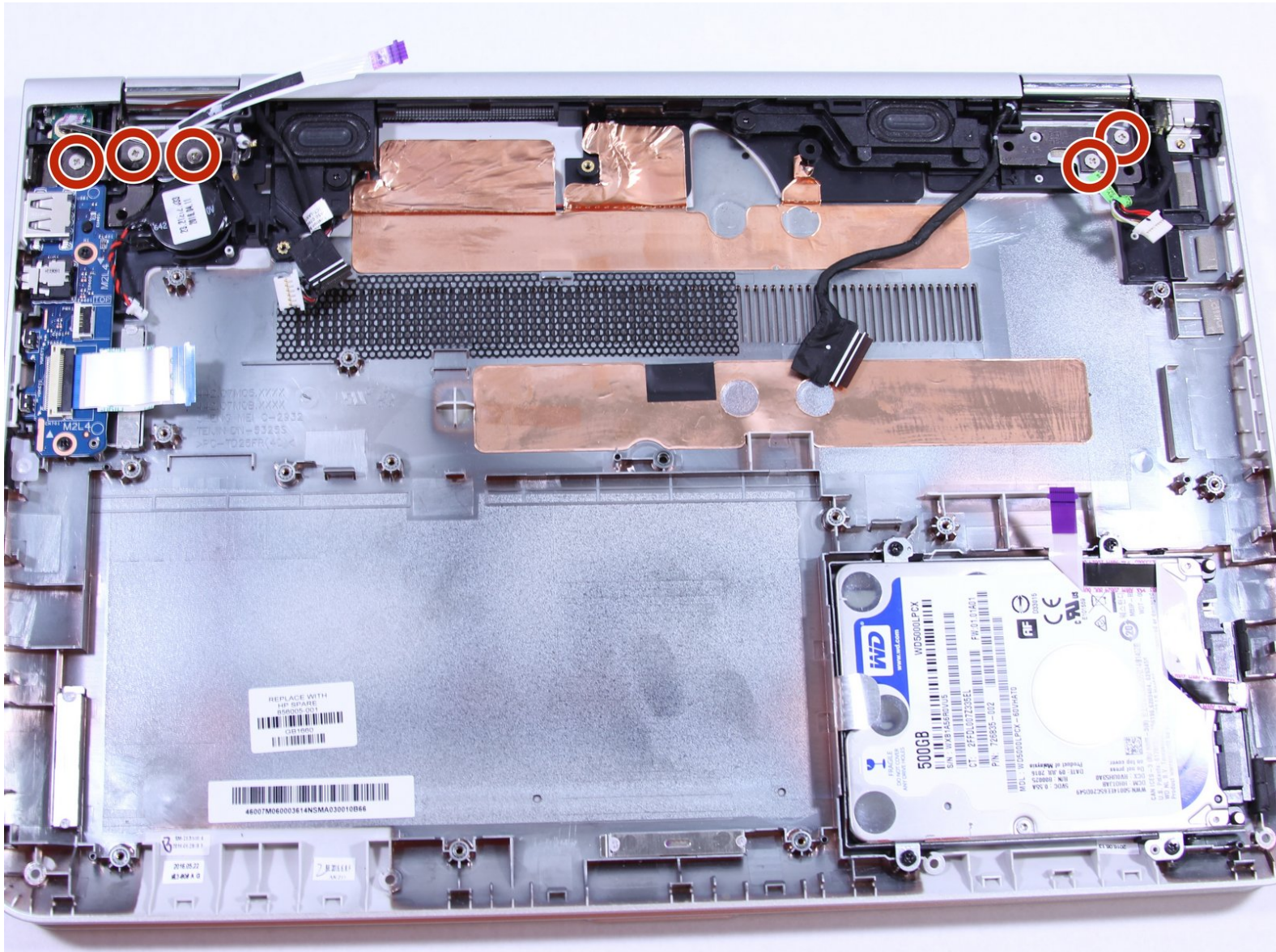




# HP Pavilion x360 m3-u001dx Display Replacement

This guide will help you replace the Display on the HP Pavilion x360 m3-u001dx.

Written By: [\\_thinh@uw.edu](mailto:_thinh@uw.edu)



# INTRODUCTION

If the display is damaged or malfunctioning, use this guide to replace it.



## TOOLS:

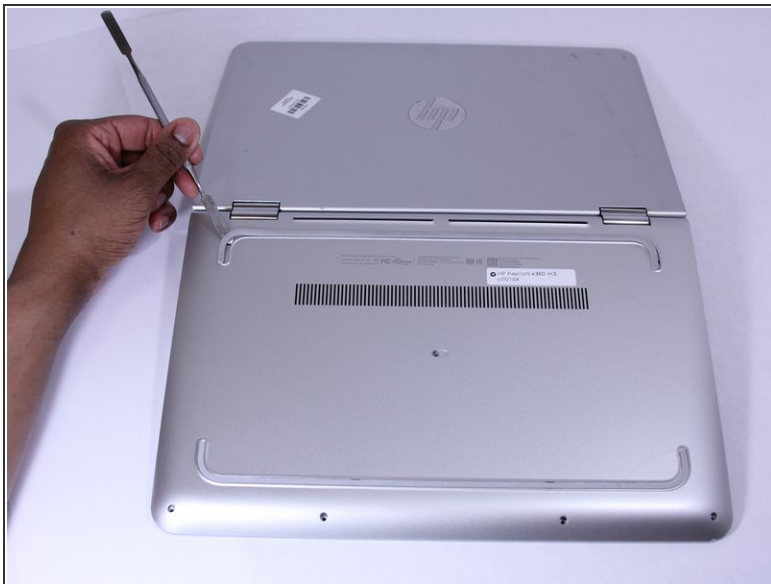
- [Heavy-Duty Spudger](#) (1)
  - [Phillips #00 Screwdriver](#) (1)
  - [Metal Spudger](#) (1)
  - [iFixit Opening Tools](#) (1)
-

## Step 1 — Keyboard



- Shut down the computer.
  - Disconnect the power and all external devices connected to the computer.
- ⚠ Working on your device while it is turned on may result in electric shock.

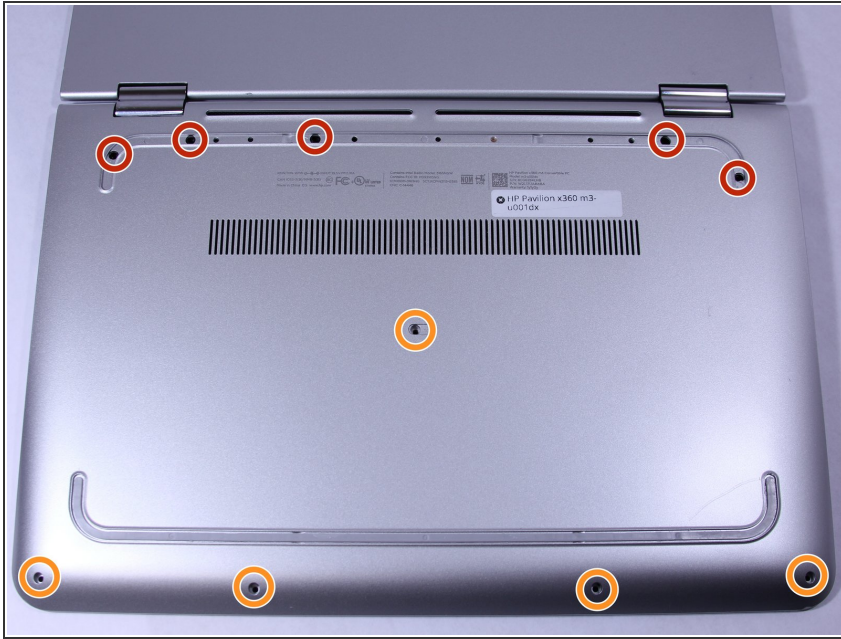
## Step 2



- Use a Metal Spudger and remove the rubber foot closet from the bottom of the laptop.



## Step 3



- Remove all of the screws located on the bottom of the laptop:
  - 5 Phillips 2.4 x 5.7 mm screws
  - 5 Phillips 2.0 x 5.0 mm screws
  - ① Make special note of each screw and screw lock size and location during removal and replacement.


## Step 4



- Turn the computer over onto its base, with the computer open and the keyboard facing upward.

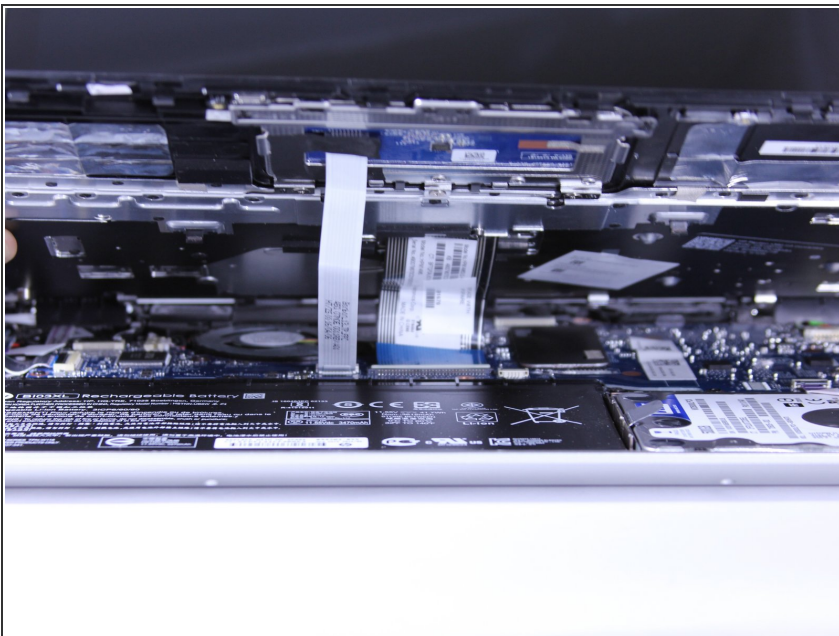
## Step 5




 The keyboard is attached internally by clips. Use a small amount of force when removing the keyboard.

- Use the Plastic Opening Tool to separate the keyboard from the base of the laptop.

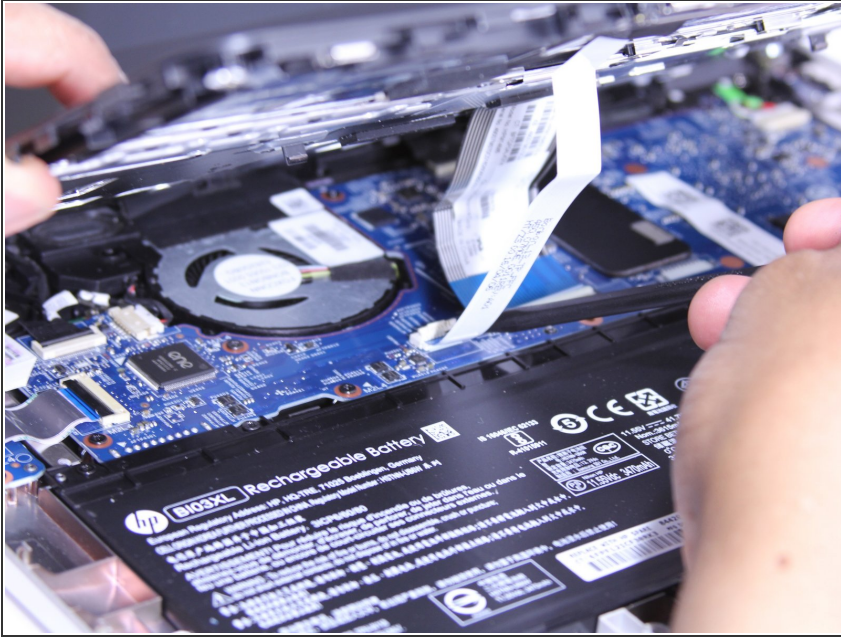
## Step 6



- Raise the keyboard slightly to access the touch pad and keyboard cables.
-  Raising the keyboard too far or with excessive force may cause damage to the keyboard, touch pad cables, or their connectors.



## Step 7



- Disconnect the ribbon cables attaching the touch pad and keyboard to the system board (motherboard).
- Using the Heavy-Duty Spudger lift up the plastic locks connecting the ribbon cable to the motherboard.
- Use the blue plastic tab on the ribbon cable to pull it out from the lock on the motherboard.

## Step 8



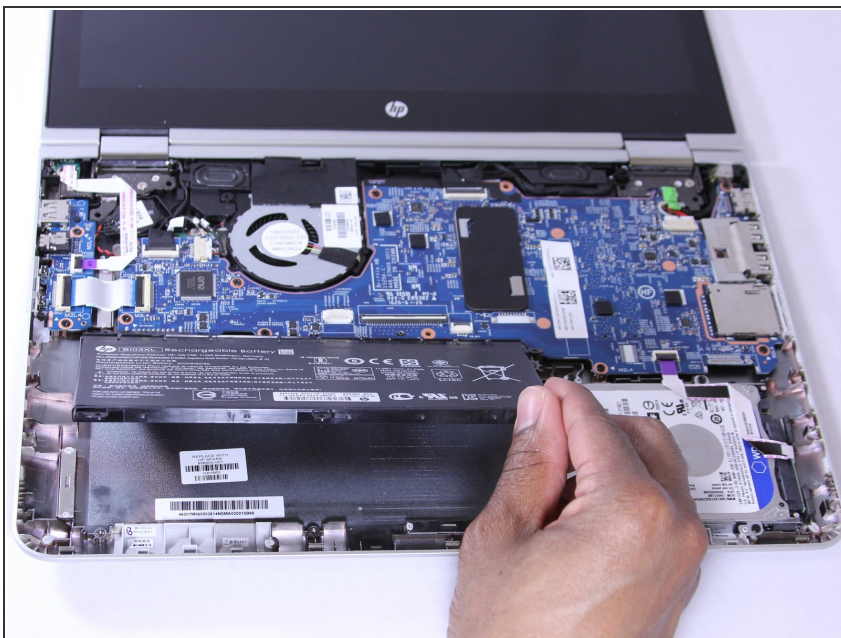
- Lift the keyboard away from the base of the laptop.

## Step 9 — Battery



- Using the Phillips 00 Screwdriver, remove 6 Phillips 2.0 x 4.6 mm screws from the perimeter of the battery.
- ⓘ Make special note of each screw and screw lock size and location during removal and replacement.

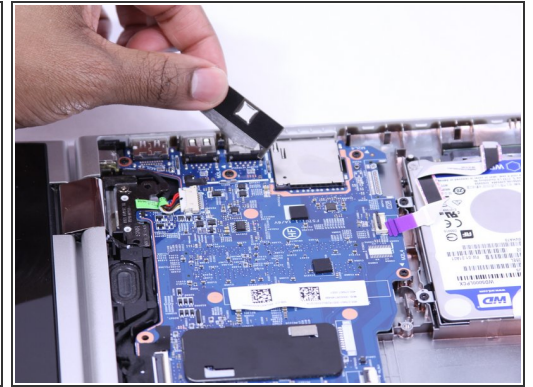
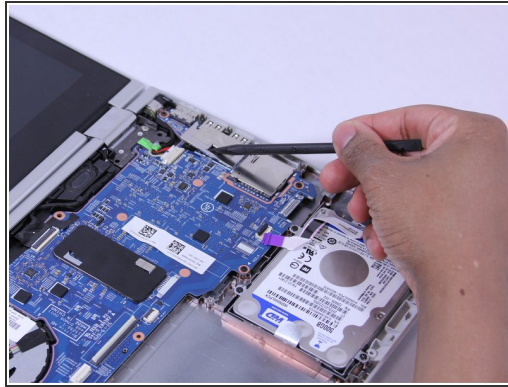
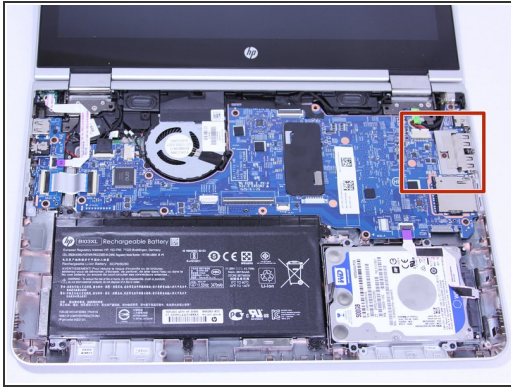
## Step 10



- ⚠ Carefully lift the battery up from lower right corner and disconnect it from the motherboard.

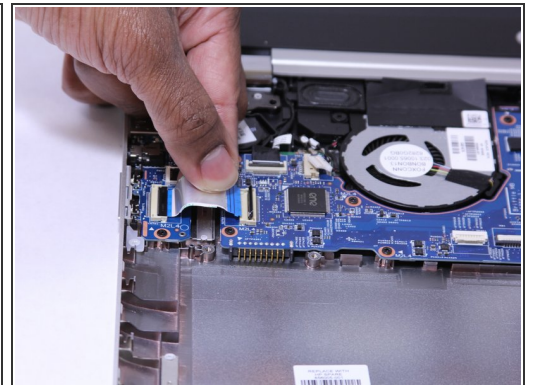
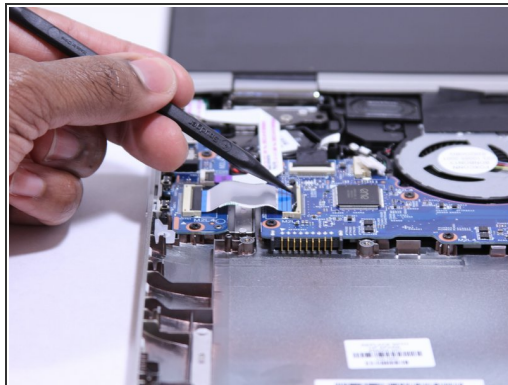
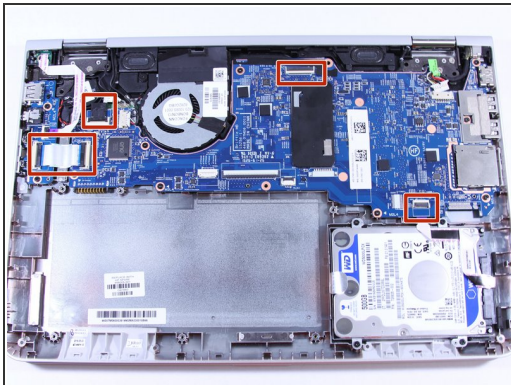


## Step 11 — USB Port Shield



- (You don't NEED to remove this shielding as you can remove the board with it still there.)
- Remove the adhesive strip.
- Lift the shield away from the base of the laptop.

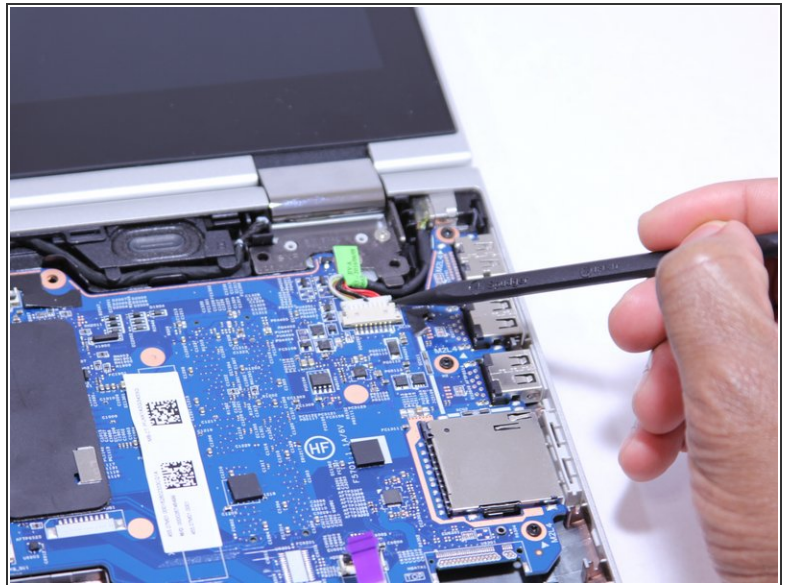
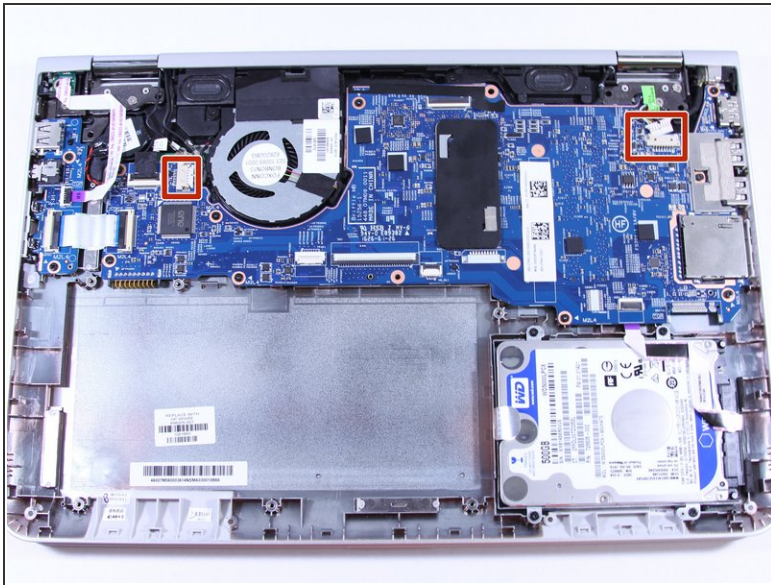
## Step 12 — System Board (Motherboard)



- Disconnect the ribbon cables attached to the system board (motherboard).
- Using the Heavy-Duty Spudger lift up the plastic locks connecting the ribbon cable to the motherboard.
- Use the plastic tab on the ribbon cable to pull it out from the lock on the motherboard.

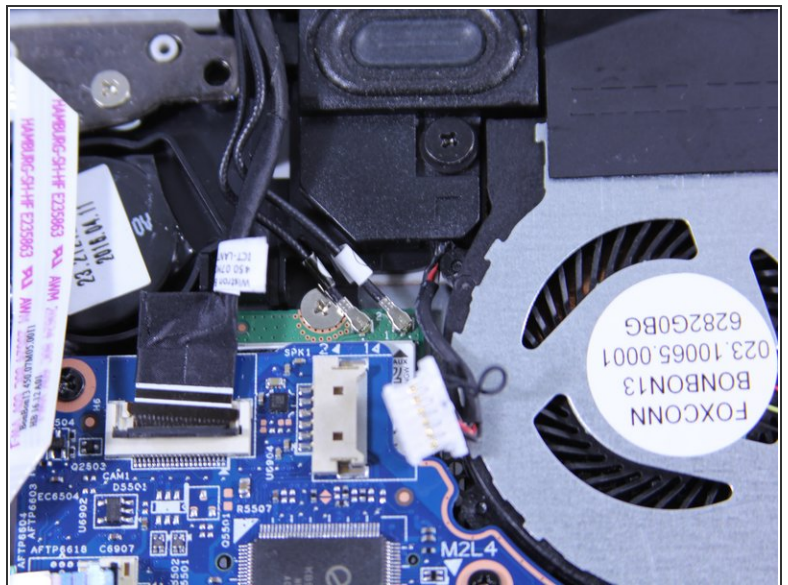
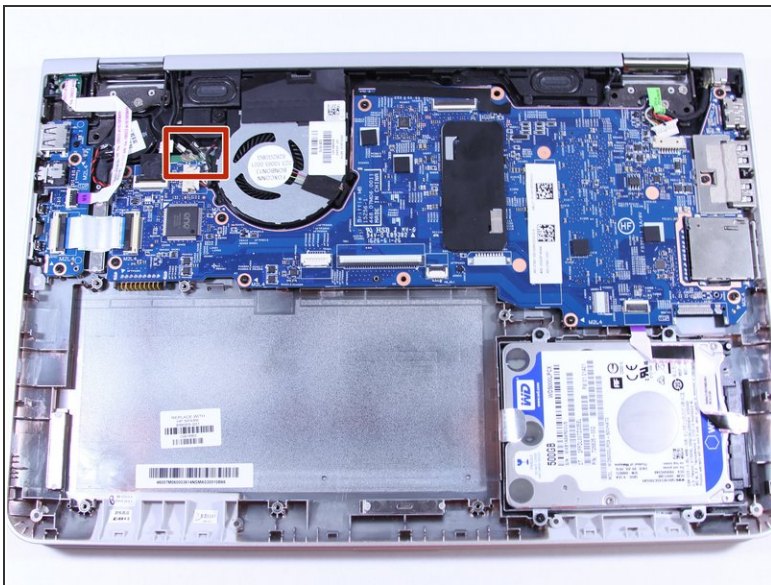


## Step 13



- Disconnect the fastened cables from the system board (motherboard) by carefully pushing the cable's plastic edges using the Heavy Duty Spudger.

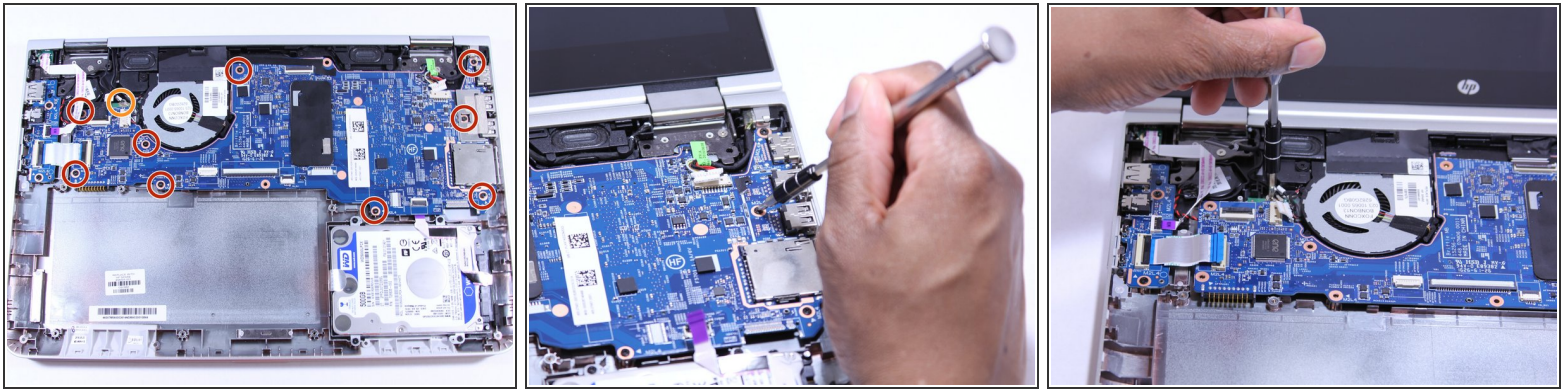
## Step 14



- Pull the clipped cables from system board (motherboard).

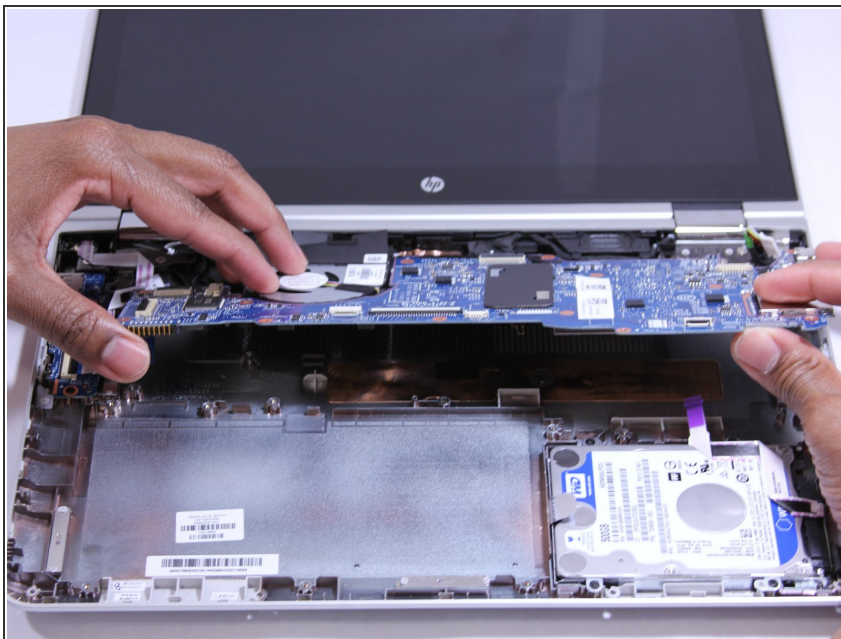


## Step 15



- Remove the system board (motherboard).
  - Using the Phillips 00 Screw Driver, remove 9 Phillips 2.0 x 4.7 mm screws with "M2L4" next to them.
  - Using the Phillips 00 Screw Driver, remove the silver screw.
- ⓘ Make special note of each screw and screw lock size and location during removal and replacement.

## Step 16



- ⚠ Carefully lift the front side of the system board (motherboard).

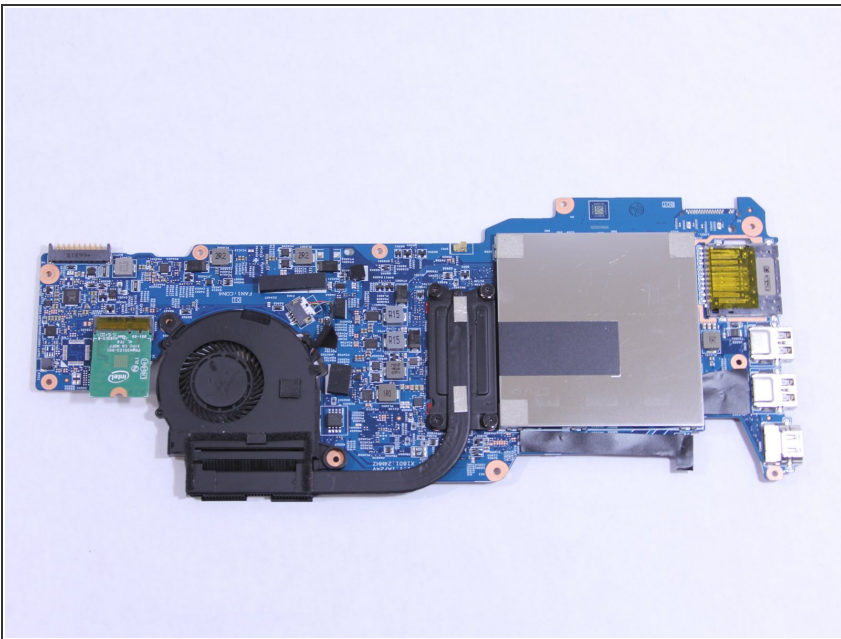


## Step 17



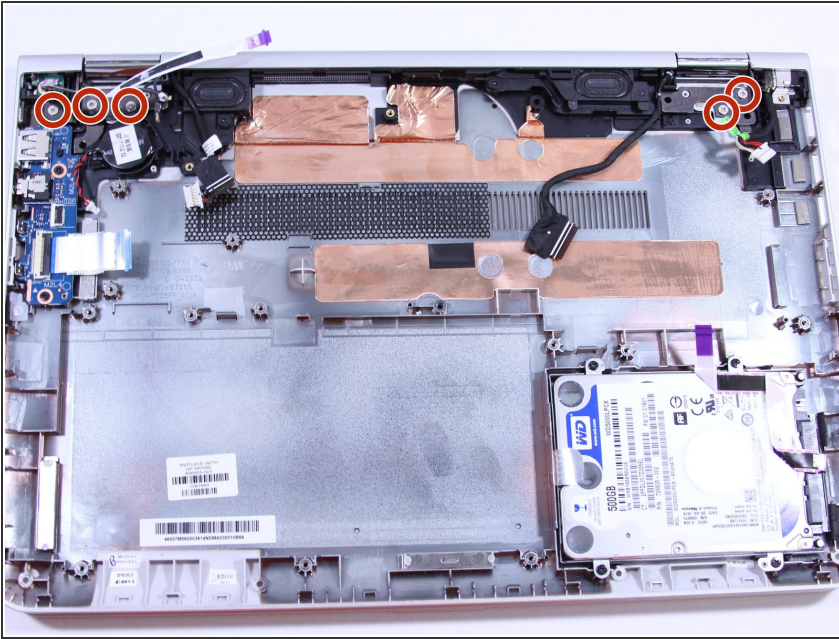
- Using a Heavy Duty Spudger, disconnect the black and red RTC battery cable on the left side of the system board (motherboard).

## Step 18



- Release the system board (motherboard) from the base enclosure.
- ⚠ Place the motherboard somewhere safe since it is the most delicate and expensive part of the laptop.

## Step 19 — Display



- Using the Phillips 00 Screw Driver, remove 5 Phillips 2.5 x 4.2 screws from the hinges from the laptop's base.
- ⓘ Make special note of each screw and screw lock size and location during removal and replacement.

## Step 20



- Gently pull the display away from the base panel to unhinge.

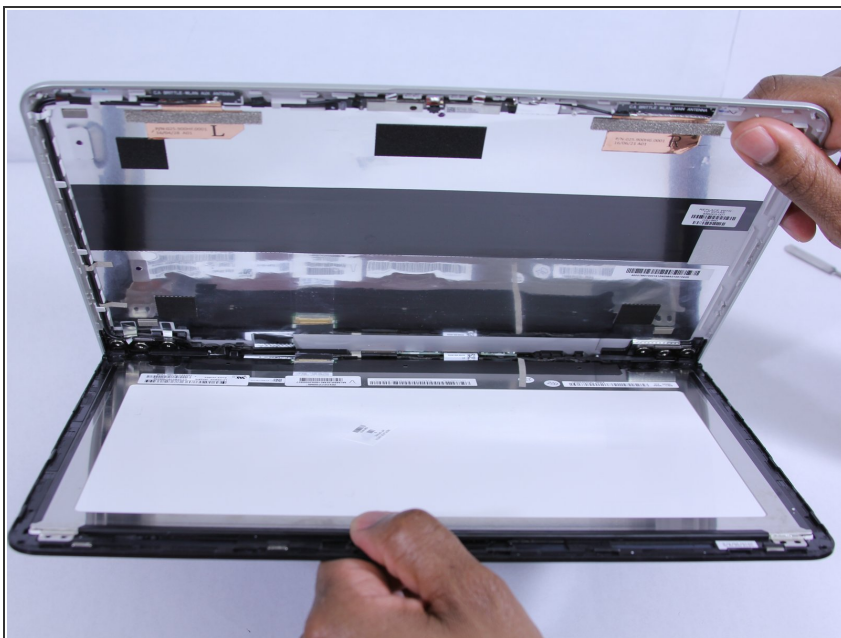


## Step 21



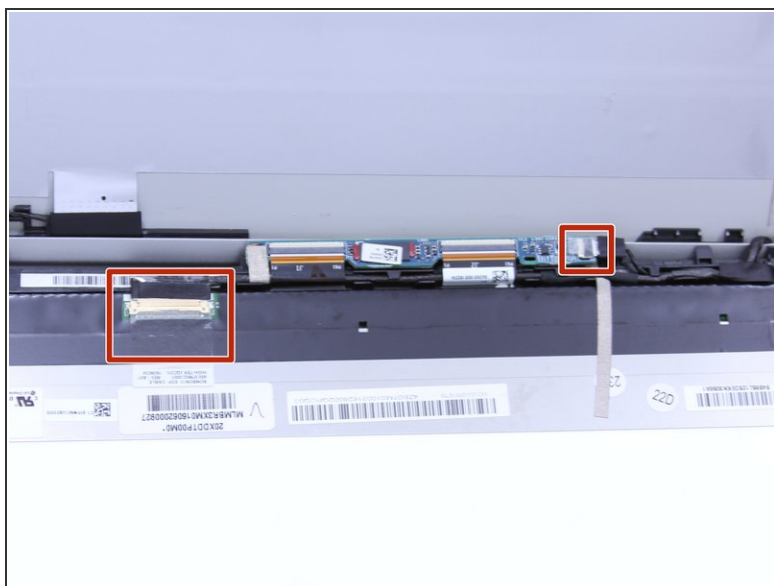
- Use a Metal Spudger to pry the display panel from the outer casing.
- ⓘ Start from the top of the display panel and move along the edges and do not to push the metal spudger too far into the screen.
- ⚠ Be cautious not to apply heavy pressure to the display panel. This could damage the touch screen.

## Step 22



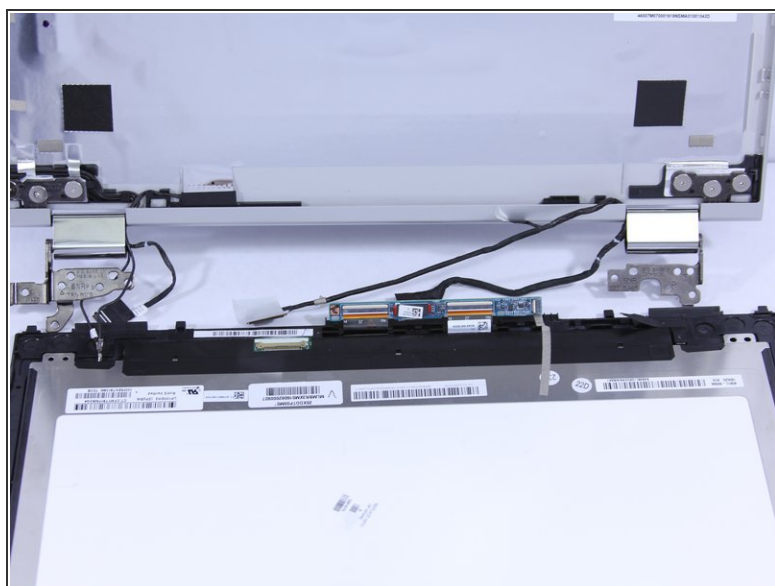
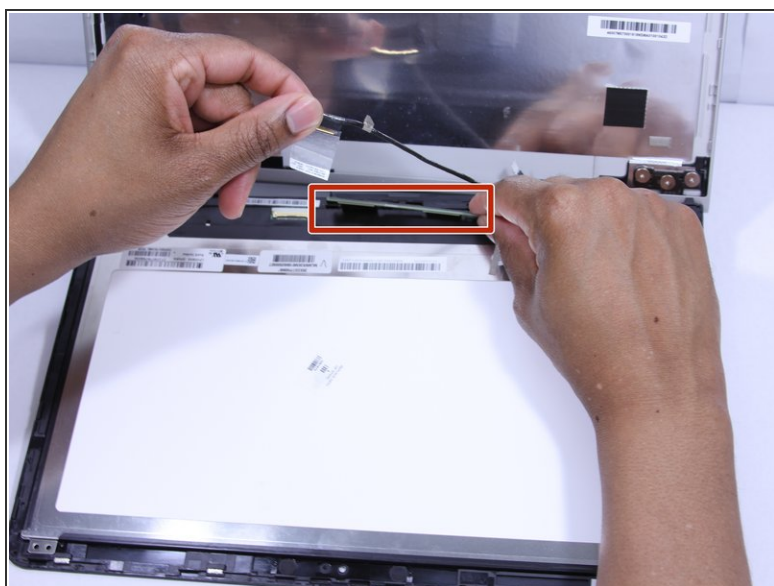
- Open the display panel to expose the connecting cables.
- ⚠ Open carefully to avoid causing damage to the connecting cables.

## Step 23



- Peel off the adhesive tape and remove the connected cable from the screen.

## Step 24



- Lift the circuit board out of the way to expose the wire underneath. Remove the wire from the base of the laptop.



Follow these instructions in reverse order to reassemble your device.