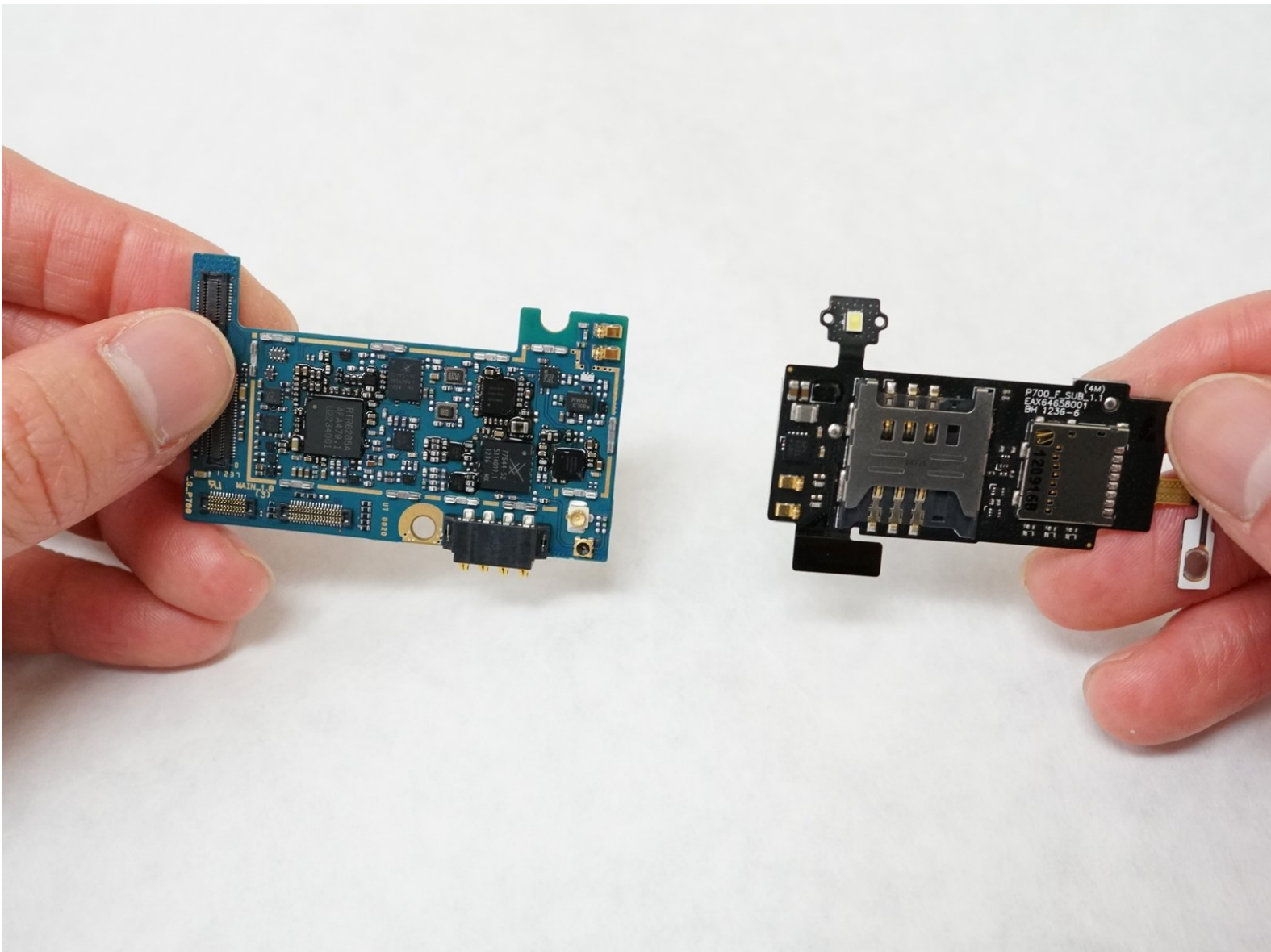




LG Optimus L7 P705 SIM Card Slot Replacement

This guide is to introduce step by step about replacing the SIM Card Slot of the LG Optimus L7 P705.

Written By: Yanxiang Ding



INTRODUCTION

This guide is to introduce step by step about replacing the SIM Card Slot of the LG Optimus L7 P705.

TOOLS:

- [iFixit Opening Tools](#) (1)
 - [Phillips #000 Screwdriver](#) (1)
-

Step 1 — Home Button



- Insert a plastic opening tool between the seams of the device and pry the back cover away from the phone.
- Remove the battery and SIM card.

Step 2



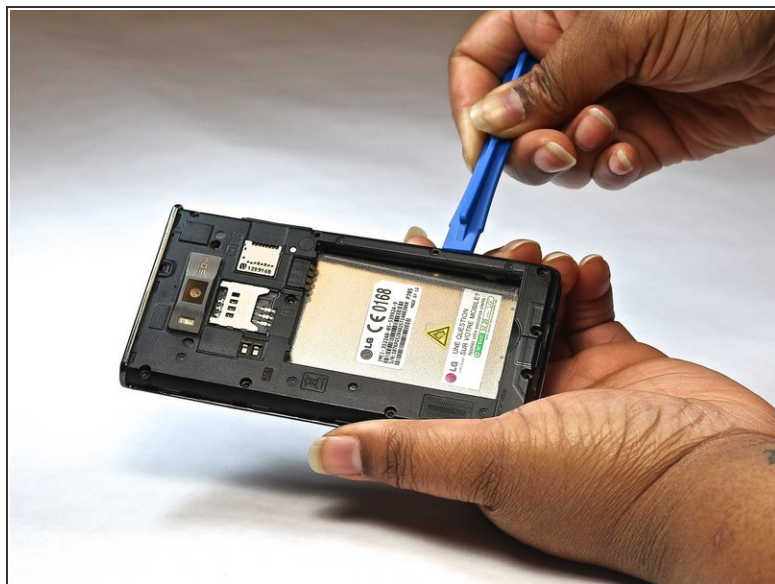
- Remove the twelve screws using the Phillips 000 screwdriver.

Step 3



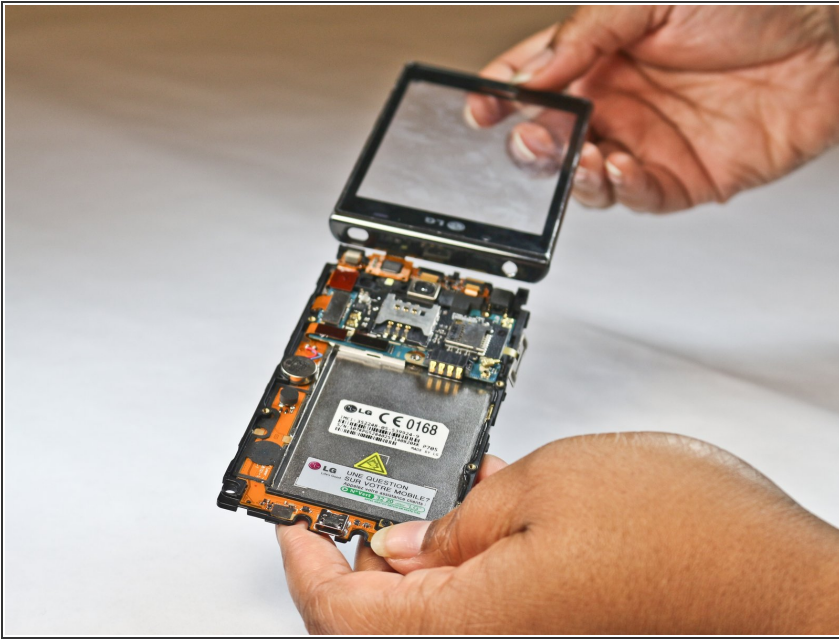
- Remove bottom plate where the charger port is located.

Step 4



- Insert a plastic opening tool between the seams of the device and apply some pressure to lift off the cover.

Step 5



- Flip over to the face of the device.
- Lift off the glass screen (display).

Step 6



- Remove the home screen button.
Replace as needed.

Step 7 — SIM Card Slot



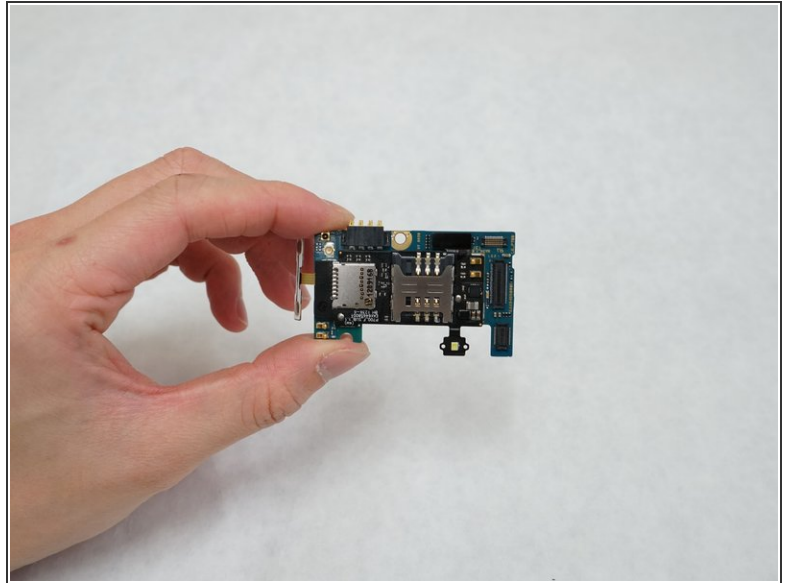
- Flip over to the back of the device
- Using the plastic spudger, lift off the three board-to-board connectors on the left-hand side of the device.

Step 8



- Using a plastic spudger, lift off the wire connector at the right bottom of the board.

Step 9



- Detach the mount including both the SIM card and the motherboard from the device.

To reassemble your device, follow these instructions in reverse order.