



Asus ROG G751JL-BB17T29 Keyboard Replacement

Replace the keyboard.

Written By: Kristofer Cesaroni



INTRODUCTION

This guide will attempt to show the user how to safely remove and replace the keyboard without damaging any of the surrounding components.

TOOLS:

- [iFixit Opening Picks set of 6](#) (1)
 - [Phillips #00 Screwdriver](#) (1)
 - [Phillips #1 Screwdriver](#) (1)
 - [Spudger](#) (1)
 - [iFixit Opening Tools](#) (1)
 - [Tweezers](#) (1)
-

Step 1 — Remove the RAM access door



- Use an opening tool to pry up the small rubber cover on the upper right corner of the RAM access door.

Step 2



- Remove the 5.3 mm Phillips #00 screw securing the RAM access door.
- ⓘ This screw is held in the hole in the door with a washer and will not come out of the hole, even after you unscrew it.

Step 3



- Insert the point of an opening pick in the seam near the top right corner of the RAM access door and gently pry the door up slightly.
- The door is held in place by small clips around its edges. Pry until you feel the nearest clips release.

Step 4



- Insert the wide edge of an opening pick into a new part of the seam between the door and the computer.
- Pry the door up to release the clips closest to the pick.
- Continue to slide the pick along the seam all the way around the door, prying as you go, until all the clips holding the door down have been released.

Step 5



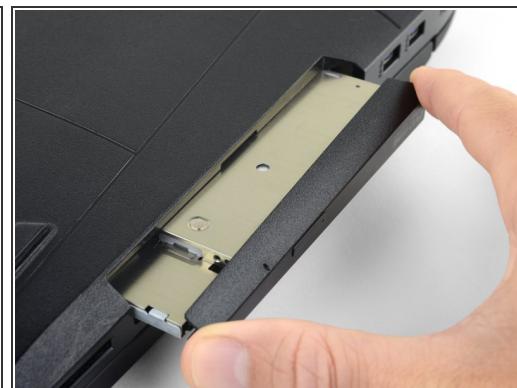
- Remove the RAM access door.

Step 6 — Remove the optical drive



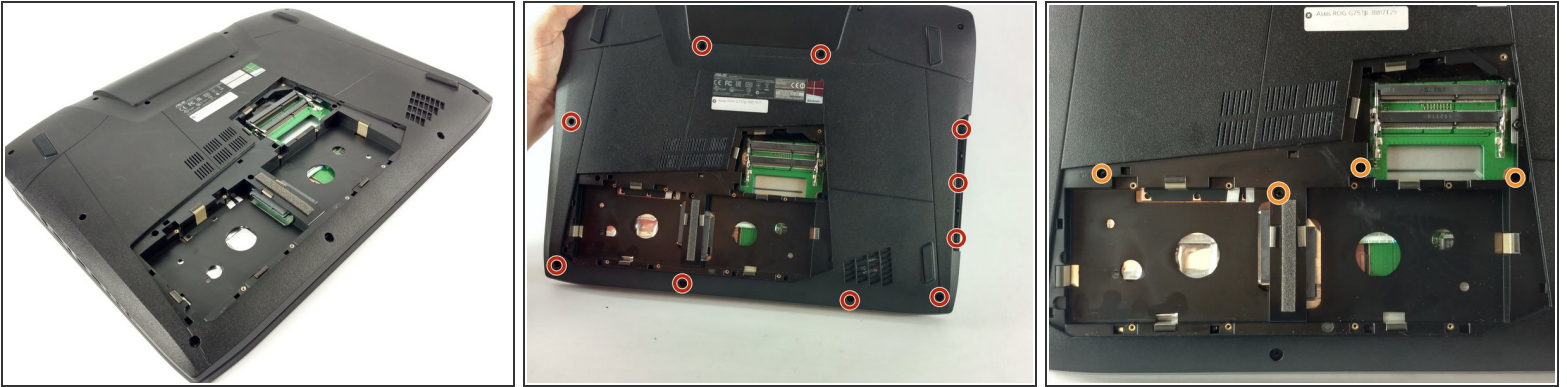
- Remove the 5.2 mm Phillips #00 screw securing the optical drive.

Step 7



- Insert an opening tool into the gap between the optical drive and the laptop.
- Pry the optical drive straight out of the laptop.
- Remove the optical drive.

Step 8 — Keyboard



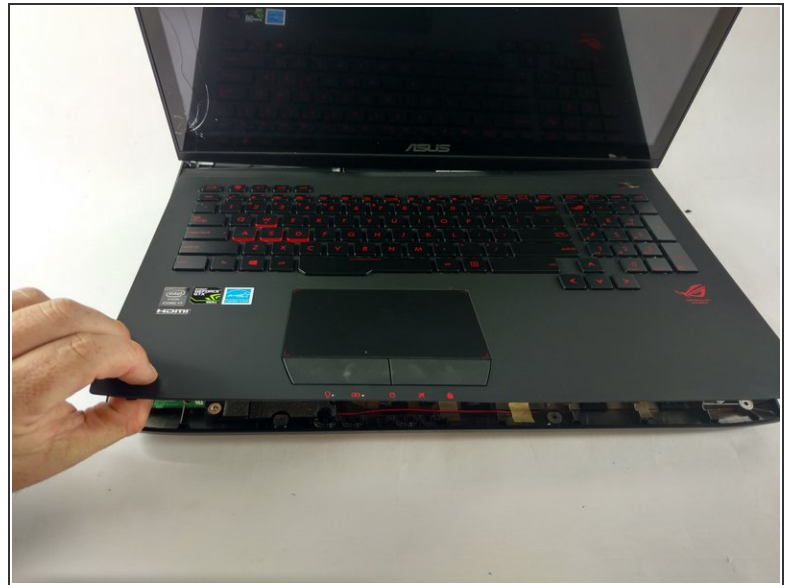
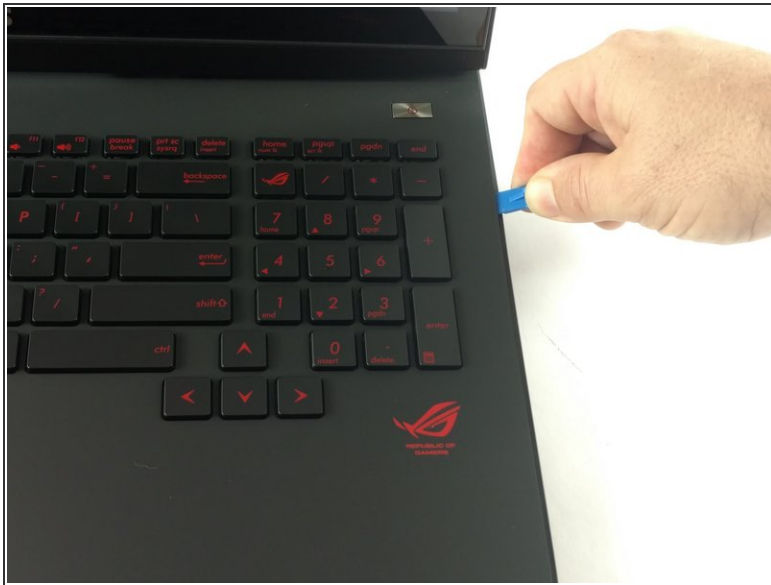
- Remove the ten 5.2 mm screws holding the main panel in place, highlighted in the photo, with a Phillips screwdriver.
- Remove the four 5.2 mm screws underneath the center panel, highlighted in the photo, with a Phillips screwdriver.

Step 9



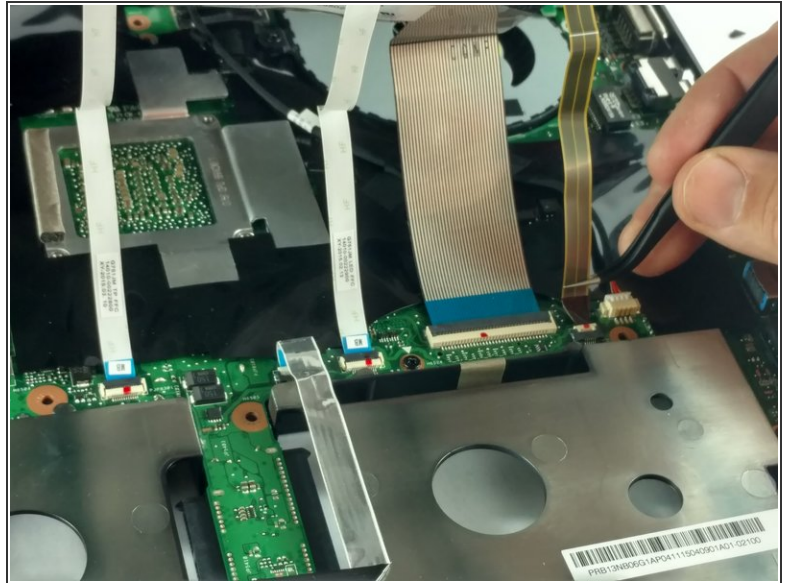
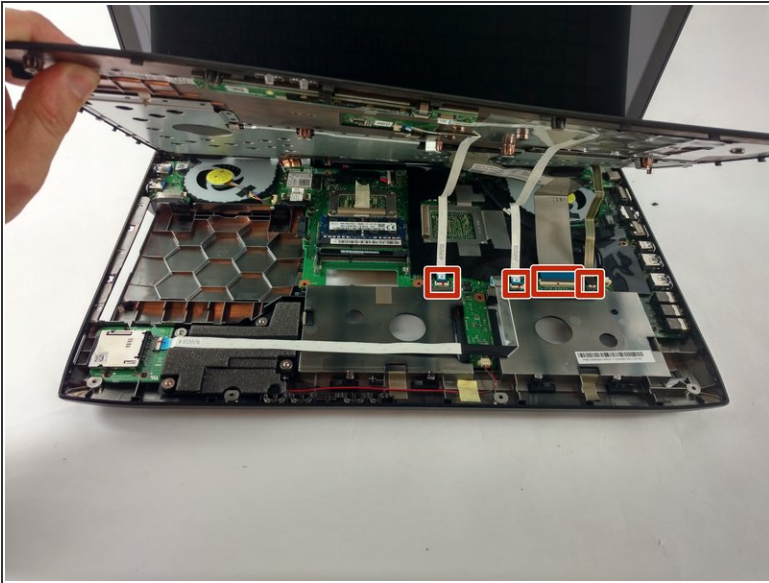
- Remove the two 6.8 mm screws underneath to back panel, highlighted in the photo, with a Phillips screwdriver.

Step 10



- Use the plastic opening tool to pry the keyboard from the base of the laptop.

Step 11



- ⚠ Lift the keyboard carefully, otherwise the ribbon connectors may tear or break
- Unlatch and disconnect each of the four ZIF connectors.
- The keyboard is now fully disconnected and you are now free to lift the keyboard away from the computer.

To reassemble your device, follow these instructions in reverse order.