



# Martian Victory Watch Face Replacement

This guide will teach you how to disassemble...

Written By: Robert Sanchez



# INTRODUCTION

This guide will teach you how to disassemble your Martian Victory Smart Watch, so that you can replace the Analog Watch Face. You might need this guide as your watch face is most likely broken and needing to be replaced. Repairing the watch face will allow the time to be seen easier, along with all the other features on the smart watch. Being able to solder might be useful in fixing your watch, but following the directions will help you with all you need.

## TOOLS:

[Spudger](#) (1)

[1.5 mm Flathead Screwdriver](#) (1)

[iFixit Opening Tool](#) (1)

[Phillips #00 Screwdriver](#) (1)

[Tweezers](#) (1)

[Phillips #0 Screwdriver](#) (1)

[Metal Probe](#) (1)

## Step 1 — Back Plate



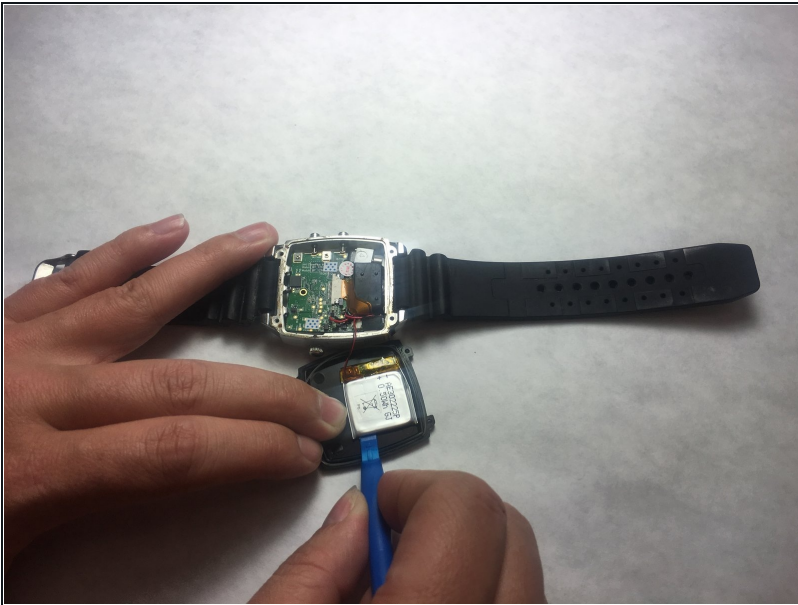
- Unscrew the four 3.4 mm flat head screws

## Step 2



- Carefully lift the back plate off the watch. You will notice a lithium battery and rubber gasket attached to the back plate.

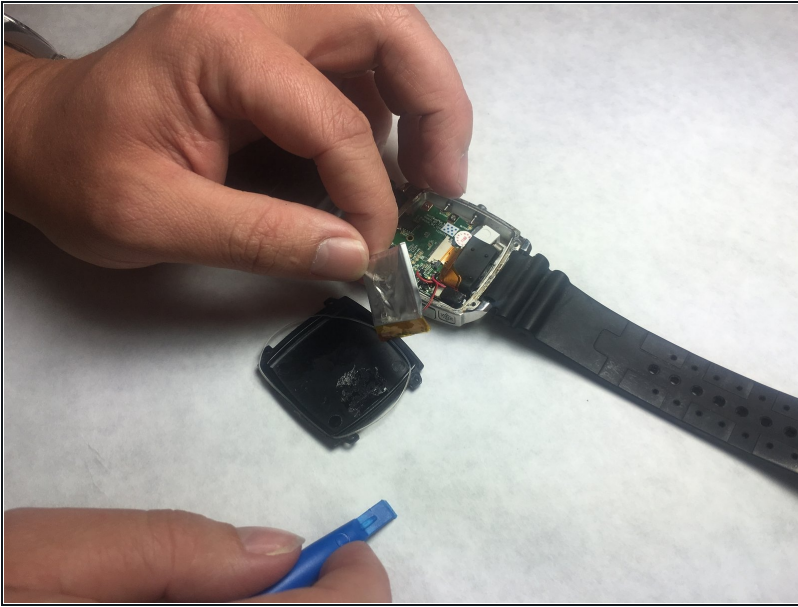
## Step 3 — Lithium Battery



- ① If not replacing lithium battery, skip down two steps.
- Using the plastic removal tool, pry the battery from the backing plate. The battery is simply attached with glue.

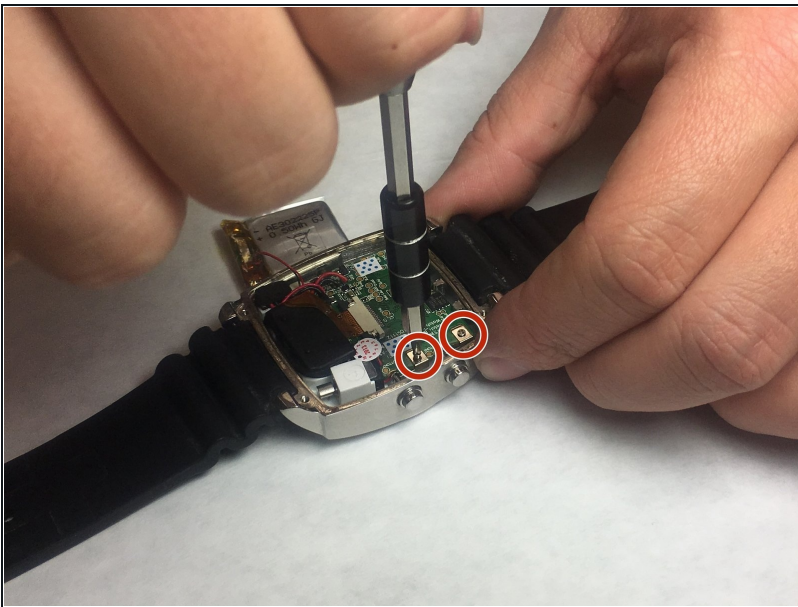


## Step 4



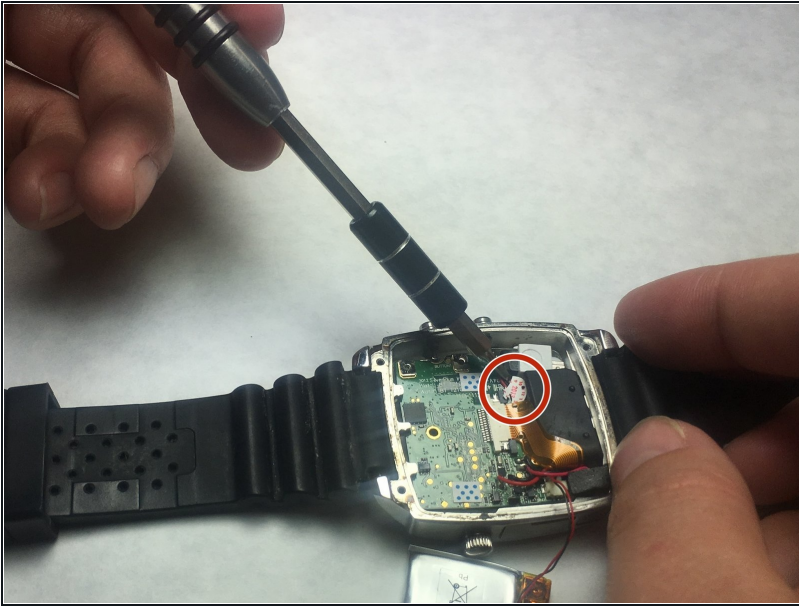
- Desolder the battery connections from the motherboard. Learn how to solder components [here!](#)

## Step 5 — Motherboard



- Use PH00 screw driver to remove two 2.4mm Phillips head screws.

## Step 6



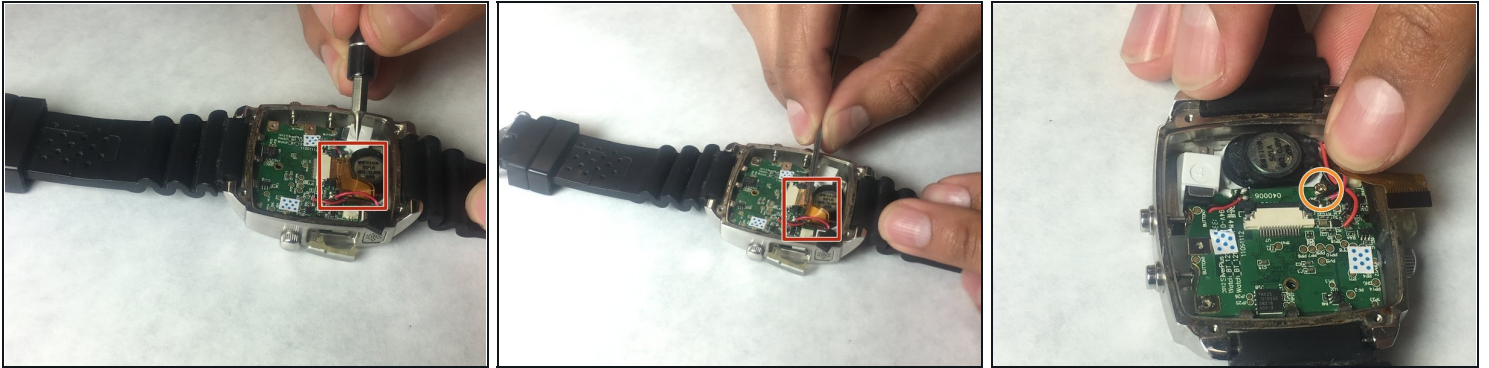
- Use a spudger or tweezers to remove a white sticker that covers a Phillips head screw.

## Step 7



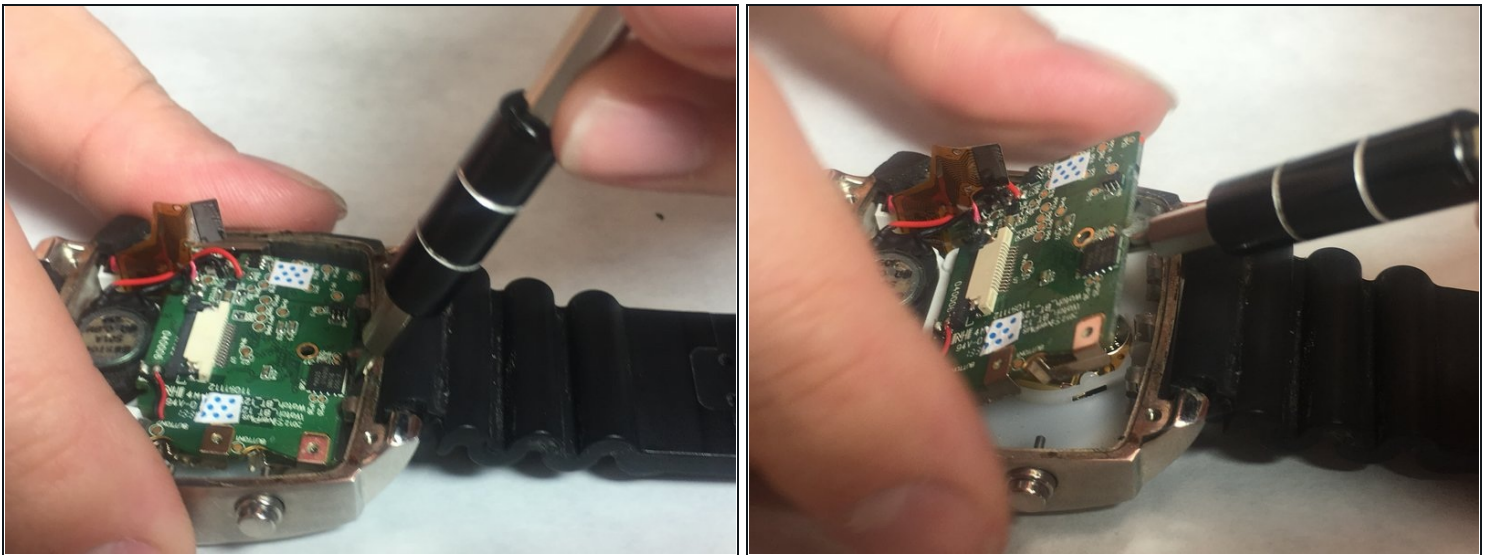
- Use PH00 screwdriver to remove 5.2mm Phillips head screw

## Step 8



- Use ESD safe tweezers to remove the gold ribbon cable.
- This will expose a second 5.2mm Phillips head screw that can be removed with a PH00 screwdriver.

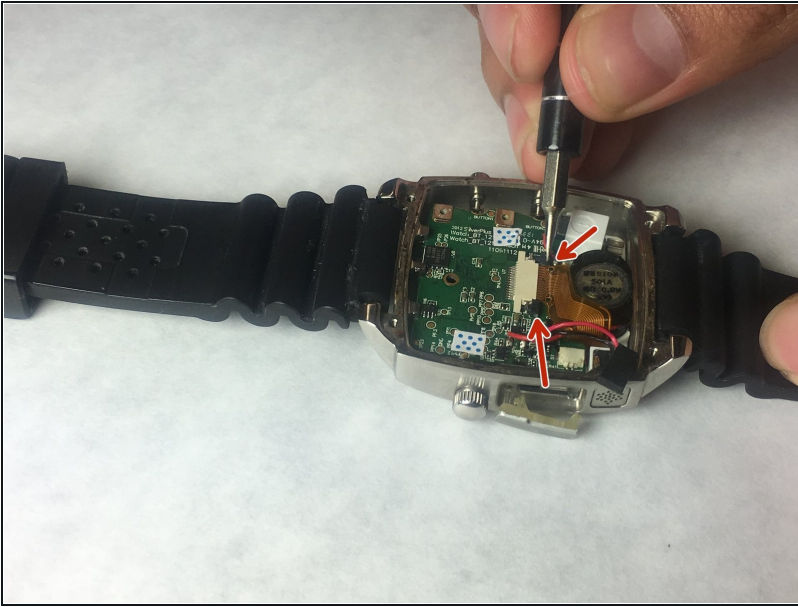
## Step 9



- Use a spudger to gently pry on the motherboard towards the top of the watch, being towards the 12 o'clock position to loosen the motherboard.
- You can now access the parts and pieces on the bottom of, and below the motherboard.

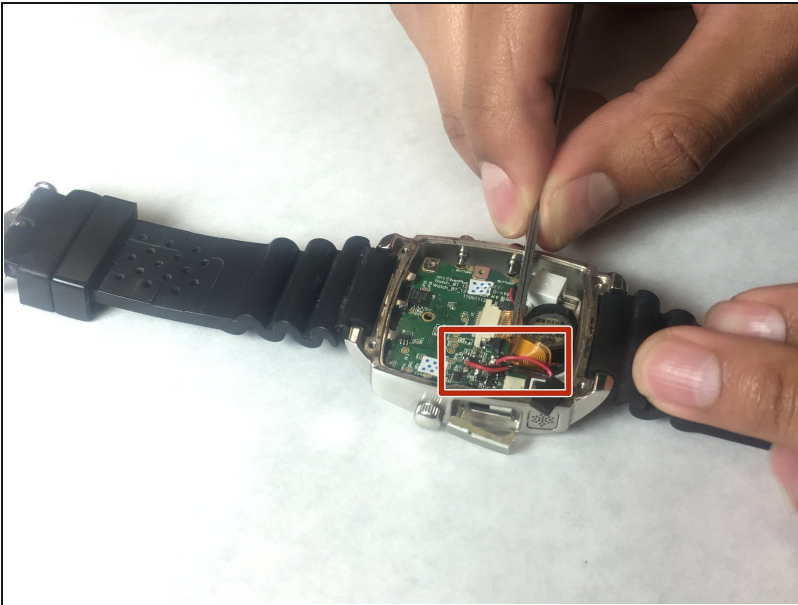


## Step 10 — LED Screen



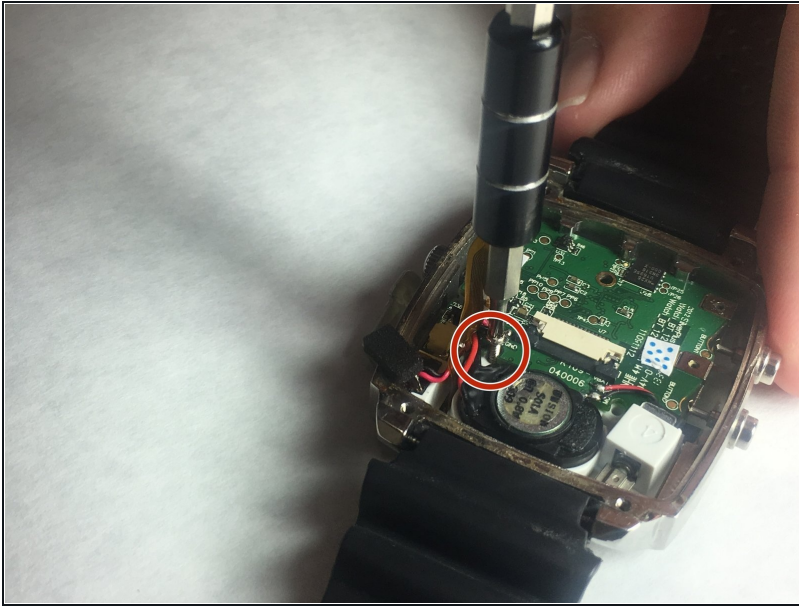
- Locate the ribbon connection, and use remove the clips holding the strip on each side using needle tool.

## Step 11



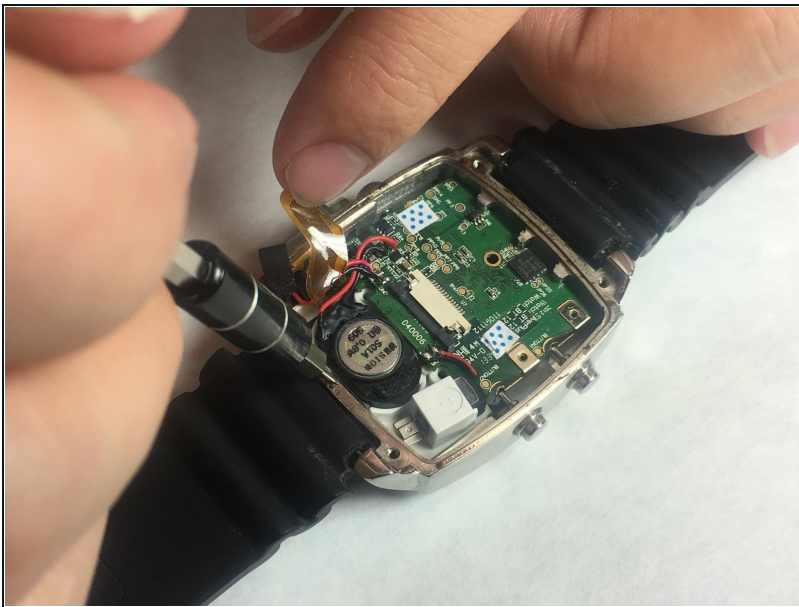
- With a pair of tweezers, carefully remove the ribbon strip connection.

## Step 12



- Remove the screw driver holding the LED screen and Speaker in place.

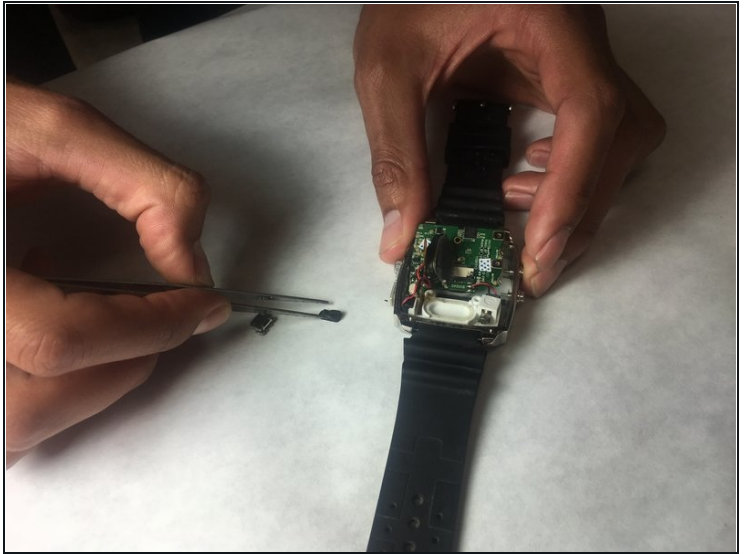
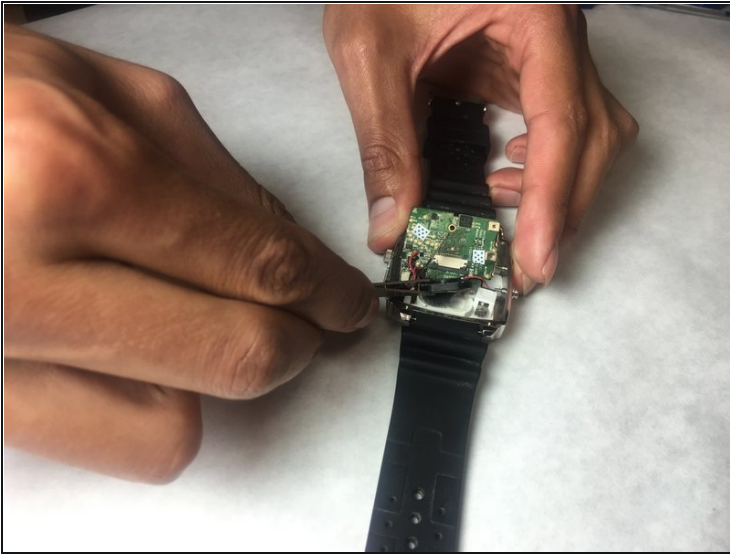
## Step 13



- Insert a small flat screw driver under the speaker in order to remove it.

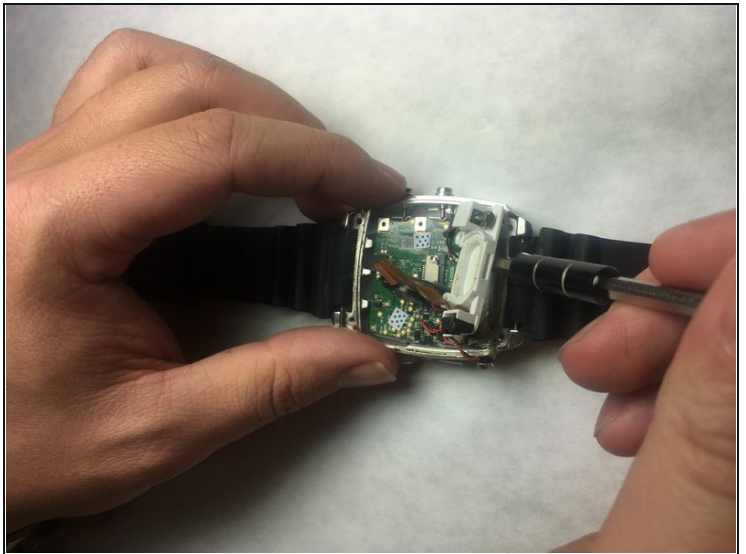
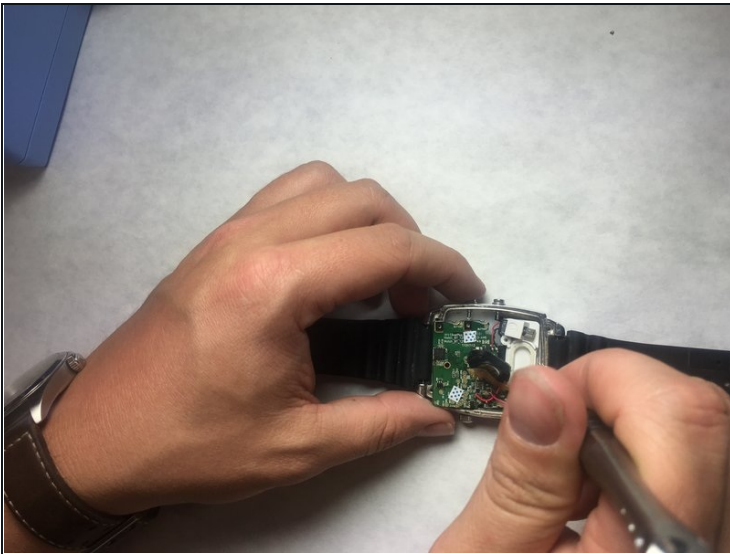


## Step 14



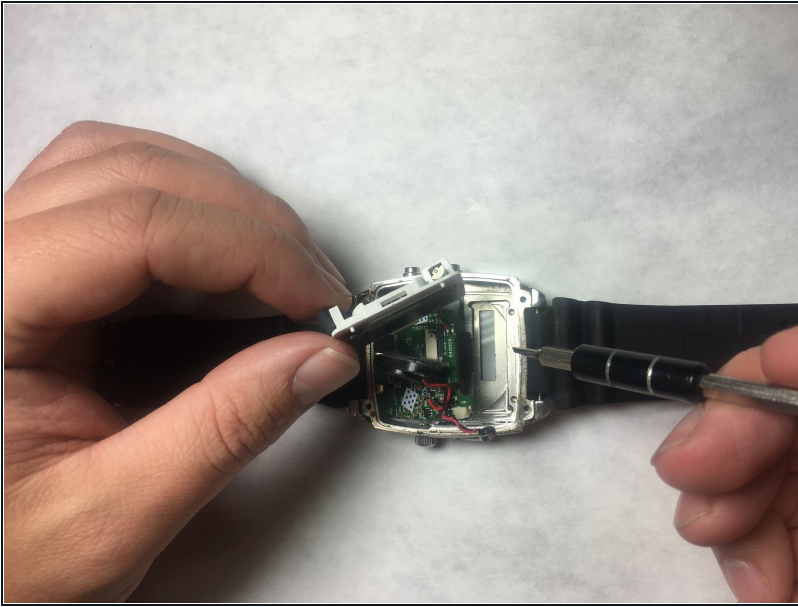
- Using tweezers, remove the speaker and move off to the side.

## Step 15



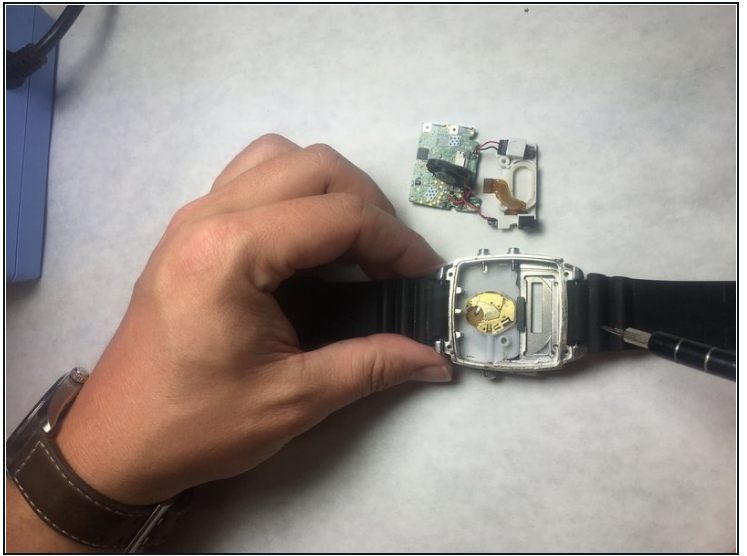
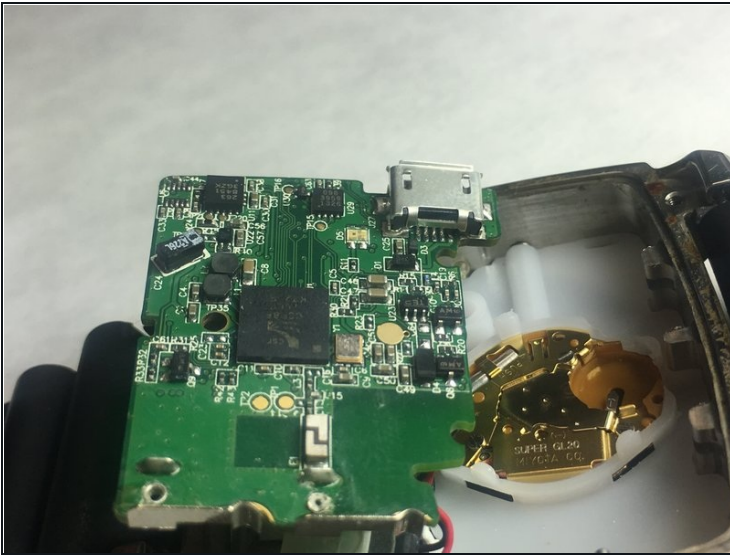
- Place a small flat head screwdriver under the LED screen, and carefully push it out of its socket.

## Step 16



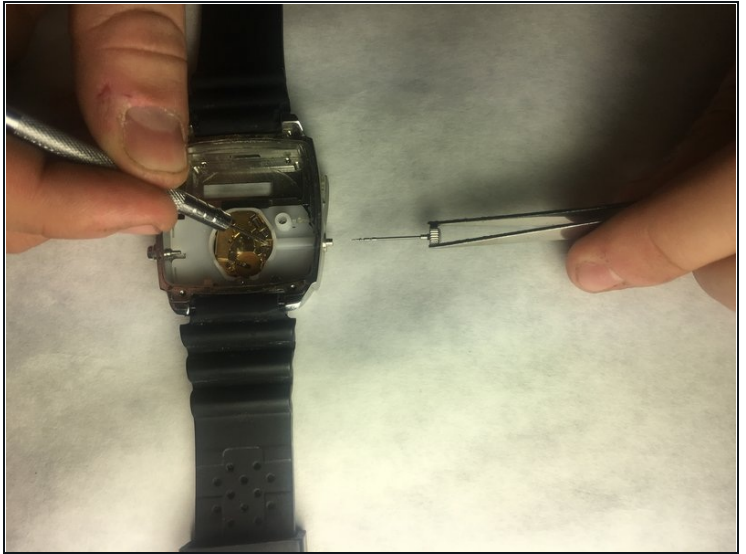
- Remove final connection to accelerometer. The LED screen is now separated from the device.

## Step 17 — Watch Face



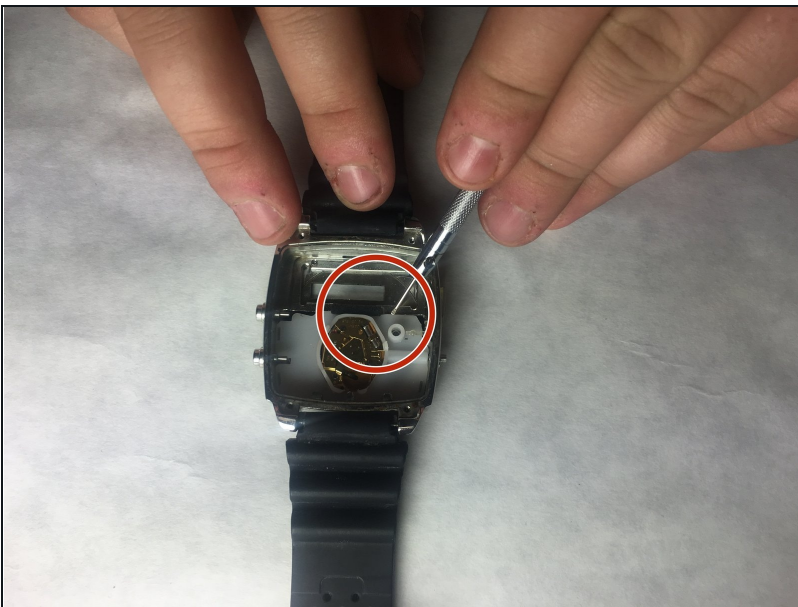
- Grab the motherboard with tweezers and remove from watch cavity.

## Step 18



- Stabilize watch with the metal probe. Place tweezers around crown and pull outward, so that the crown can be removed.

## Step 19



- Insert the spudger under plastic panel cover in order to access watch face.



## Step 20



- Insert a spudger under the black watch face. Gently push up, so that it can be raised out of the watch.
  - Use tweezers or pin tool in order to remove from watch.
- 

To reassemble your device, follow these instructions in reverse order.