



Sony BDP-BX620 Port Board Replacement

Written By: Zachery Zavala

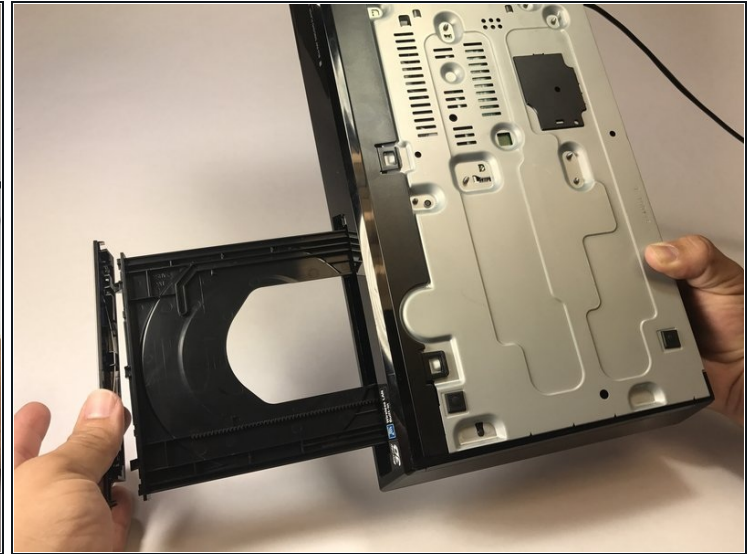
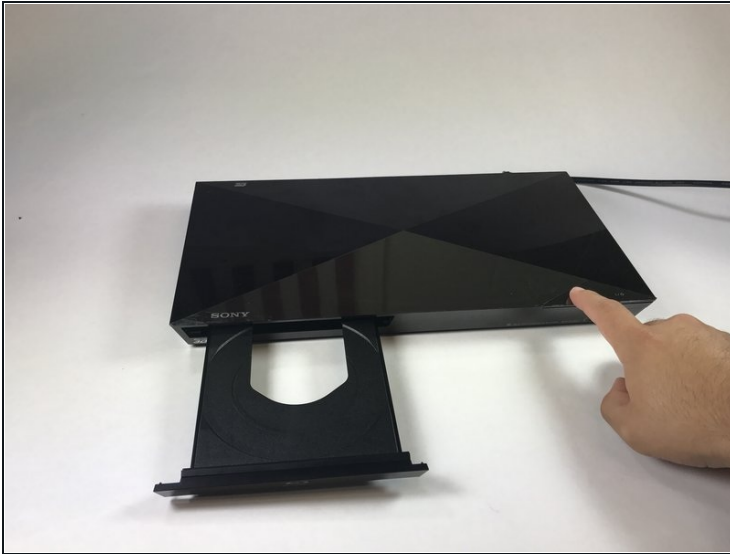


🔧 **TOOLS:**

Phillips #0 Screwdriver (1)

Tweezers (1)

Step 1 — Outer Cover



- Power on the device, eject the disk tray, and power off the device.
- Turn the device over.
- Lightly apply downward pressure on the black covering on the disk tray until it comes off.

⚠ Caution, applying too much pressure can break the black covering.

Step 2



- Turn the device around.
 - Using a Phillips screw driver, remove the screws on both ends of the device circled red in the image.
 - Slide the side covers on either side towards the back of the device.
- ⓘ There is a back cover on either side of the device.

Step 3



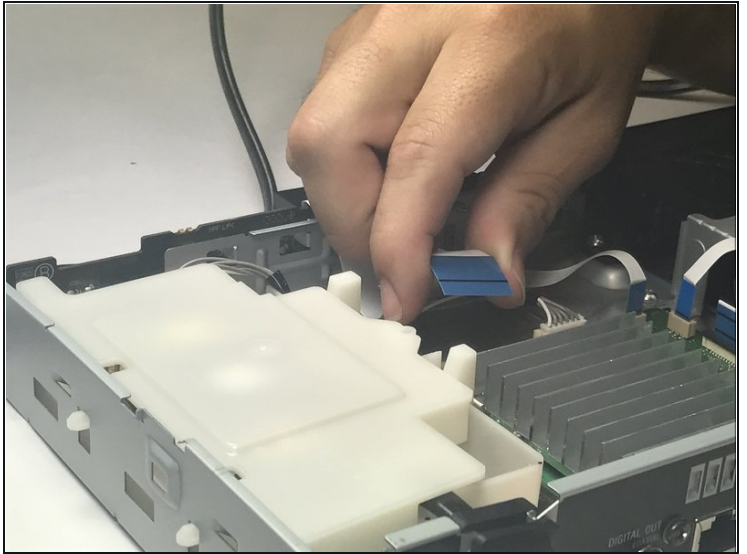
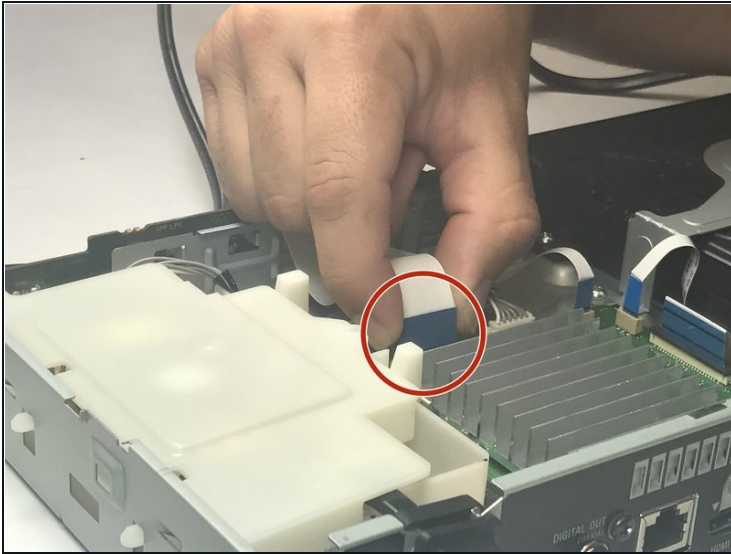
ⓘ This step might require someone to help unclasping the plastic clips.

- Turn the device so that the bottom is facing up.
- In the bottom, unclip the three plastic clips circled in red.
- On either side, unclip the plastic clip circled in red
- Slide the black covering forwards to remove.

ⓘ All five clips have to be unclaspd for the covering to be removed.

⚠ Careful not to break the plastic clips when putting it back on.

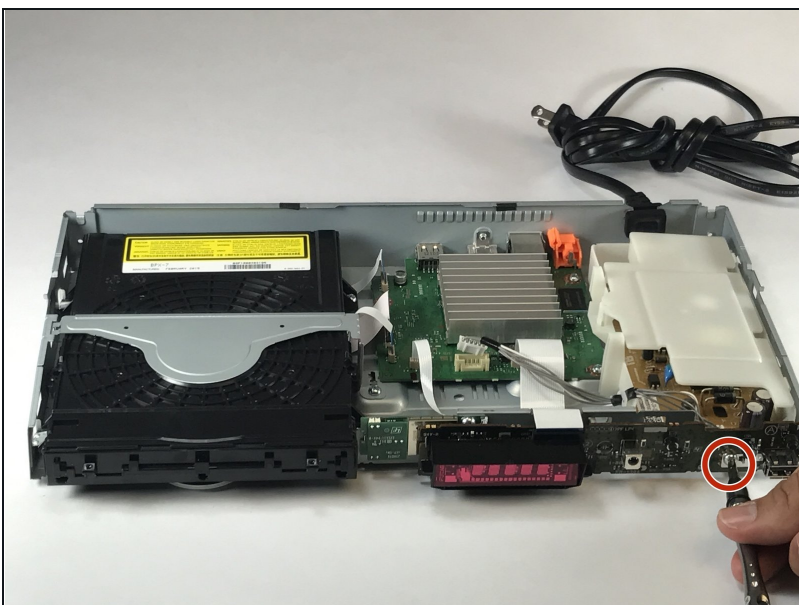
Step 4 — Port Board



- Now, spot the large ribbon cable that connects between the motherboard and the port board.
- Remove the cable by pulling upwards.

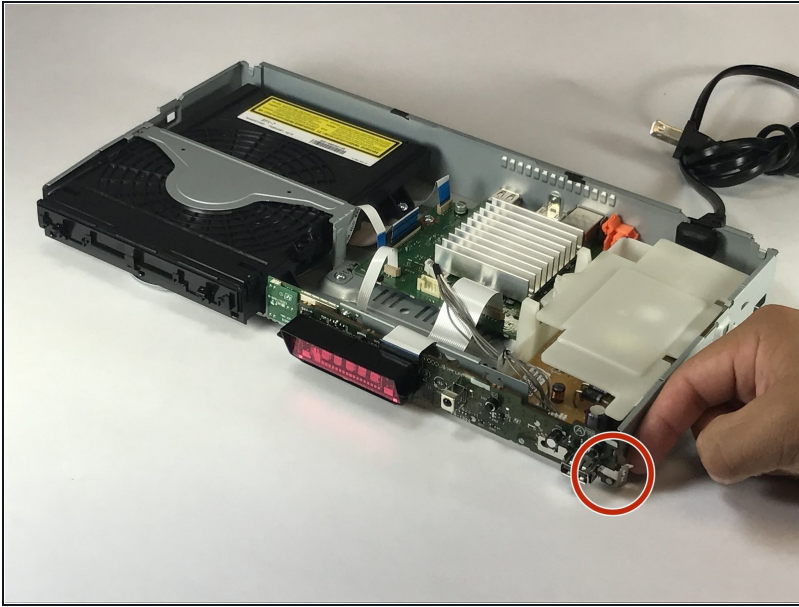
⚠ Be careful when pulling upwards on the ribbon cable. Too much force can cause it to rip.

Step 5



- Use your Phillips screwdriver to take out the silver screw holding in the port board.

Step 6



- Now use the [tweezers](#) to unclip the portboard on the side.

To reassemble your device, follow these instructions in reverse order.