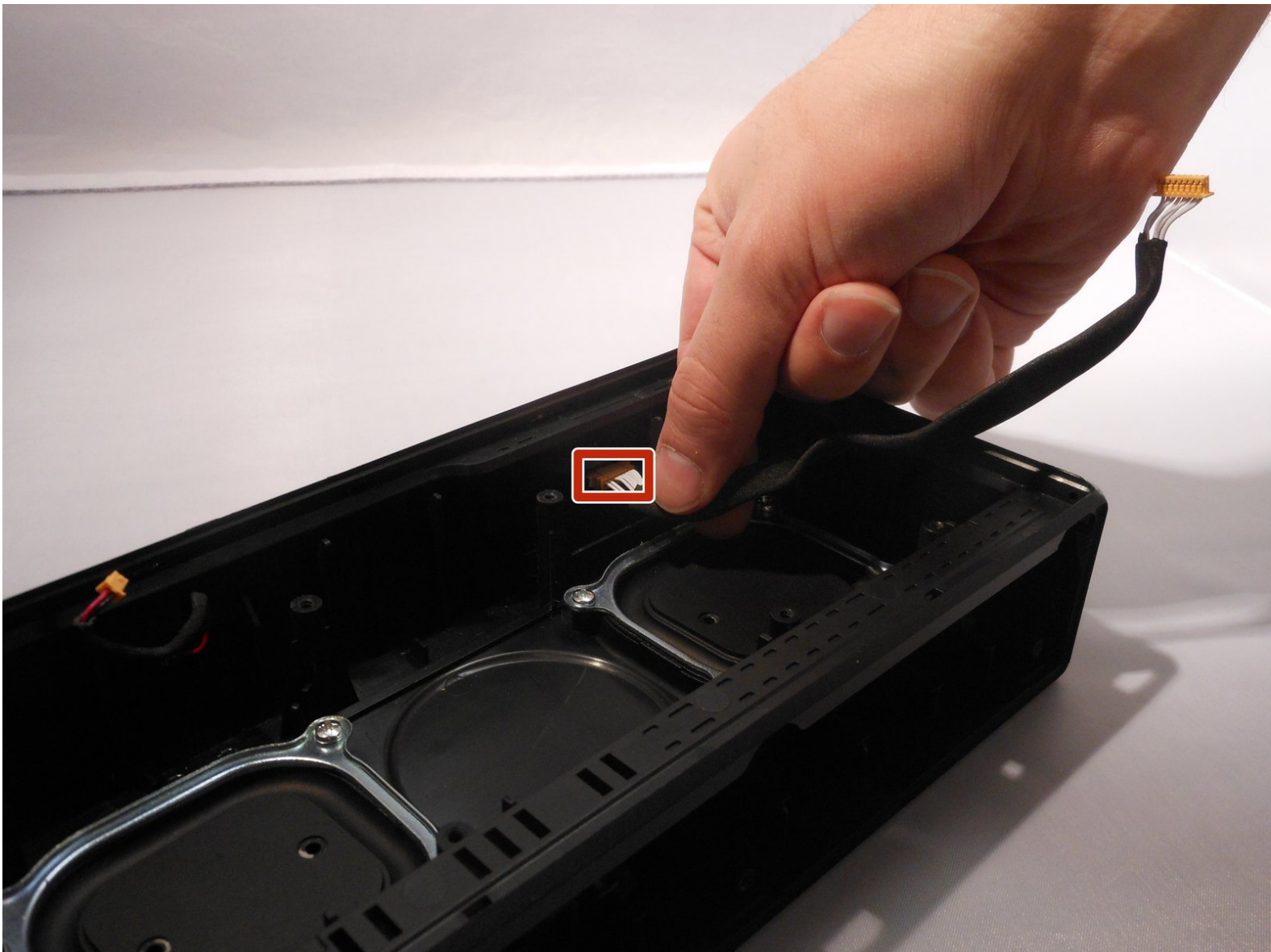




# Sony SRS-X5 Button Pad Replacement

When the buttons stop working, this guide will help in replacing the button pad.

Written By: Jeffrey Yalung



---

# INTRODUCTION

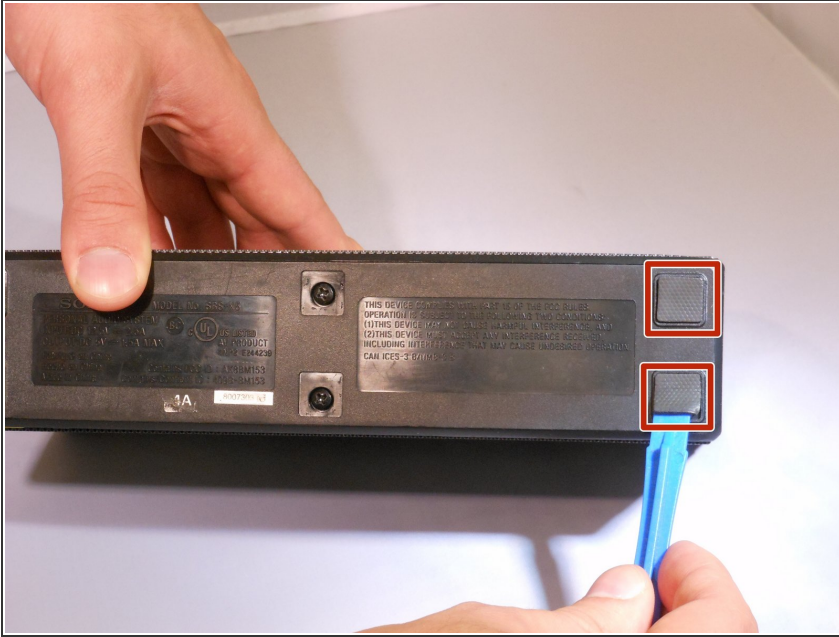
This guide will demonstrate how to remove the sticky button pad.




## TOOLS:

- [Phillips #1 Screwdriver](#) (1)
  - [Metal Spudger](#) (1)
  - [iFixit Opening Tools](#) (1)
  - [Phillips #00 Screwdriver](#) (1)
-

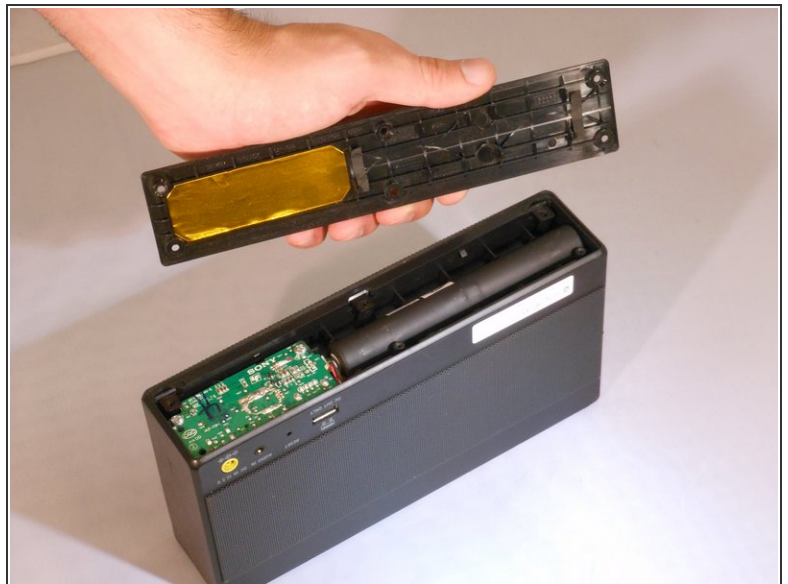
## Step 1 — Battery



- To gain access to the 6 bottom screws remove the following. Remove the adhered 4 corner foam pads on the bottom of the speaker using the blue plastic opening tool to reveal the screws underneath. Remove the adhered 2 center plastic squares.

 Make sure the speaker is unplugged and powered down before doing any work on the device.

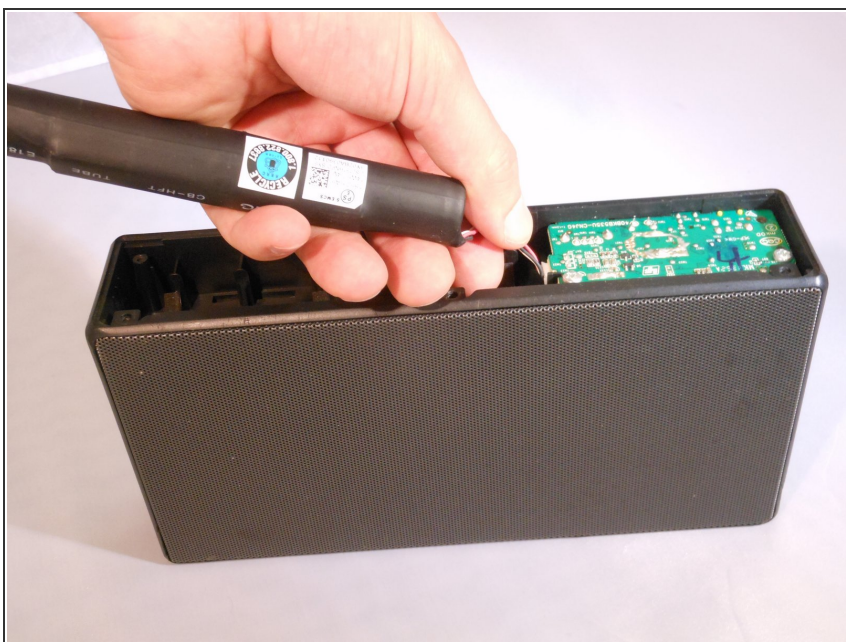
## Step 2



- Unscrew the six 6mm screws with a Phillips head #1 screwdriver.
- Remove the bottom panel of the speaker.



### Step 3



- Unplug the battery by gently pinching the plastic end connected to the smaller board and pull away.
- Remove the battery.

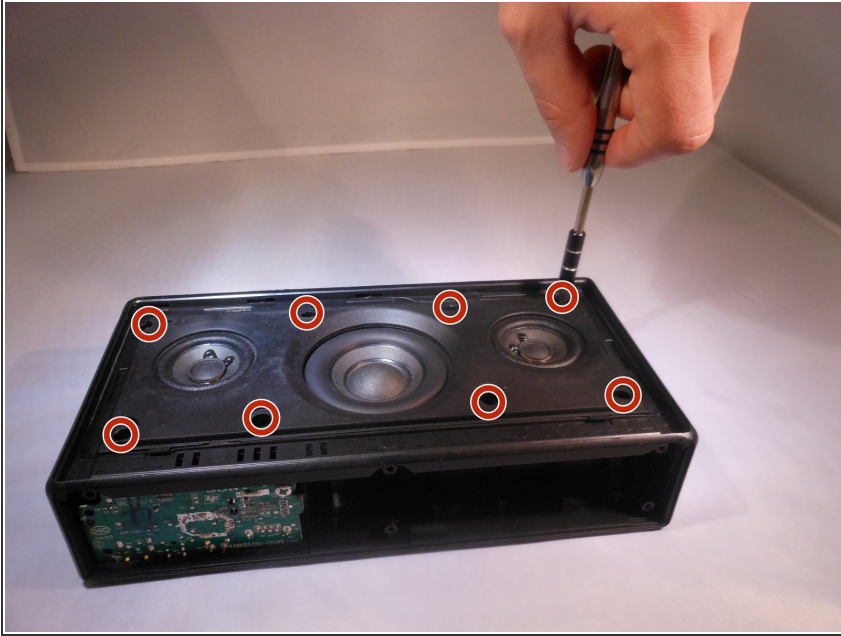
### Step 4 — Speaker



- To remove the speaker grill, first push down slightly on the 2 plastic hook tabs to release them, then

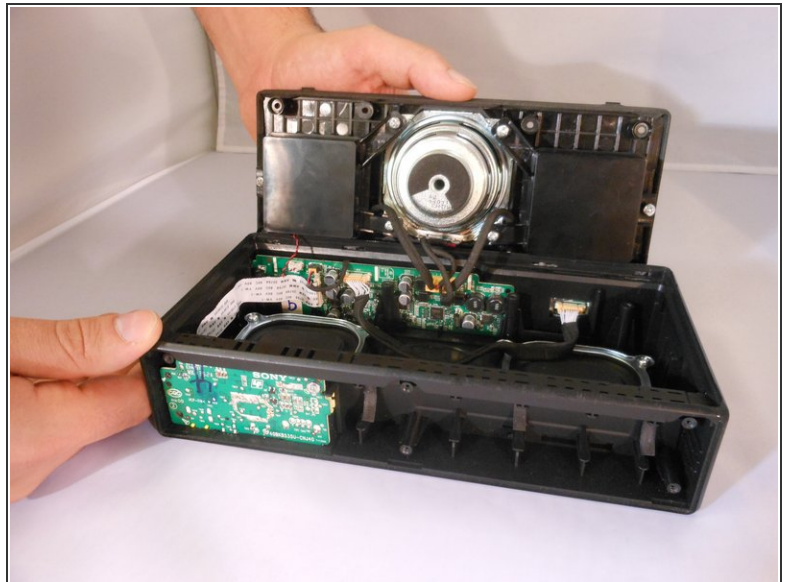
push the middle plastic screw tab out.

## Step 5



- Remove the eight 0.5mm Phillips #1 screws from the speaker panel.

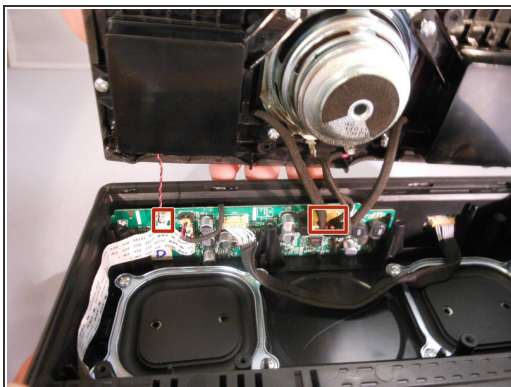
## Step 6



- Using the plastic opening tool, flip open the speaker panel.



## Step 7



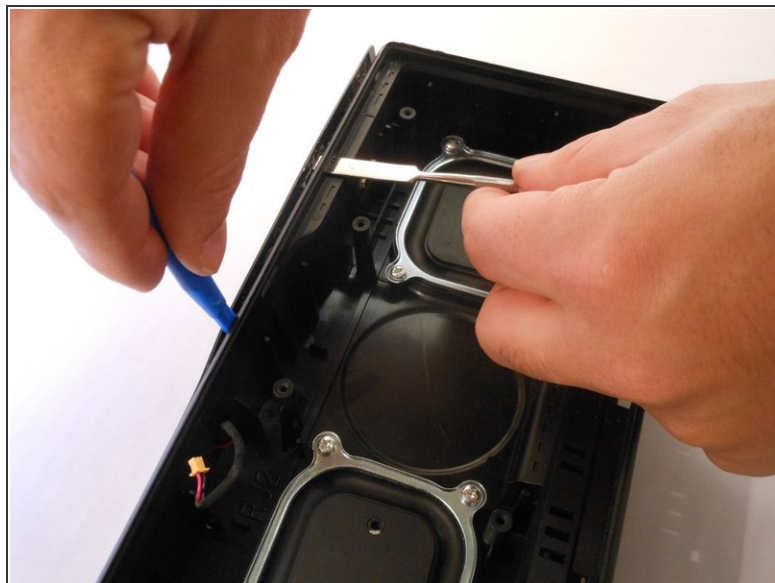
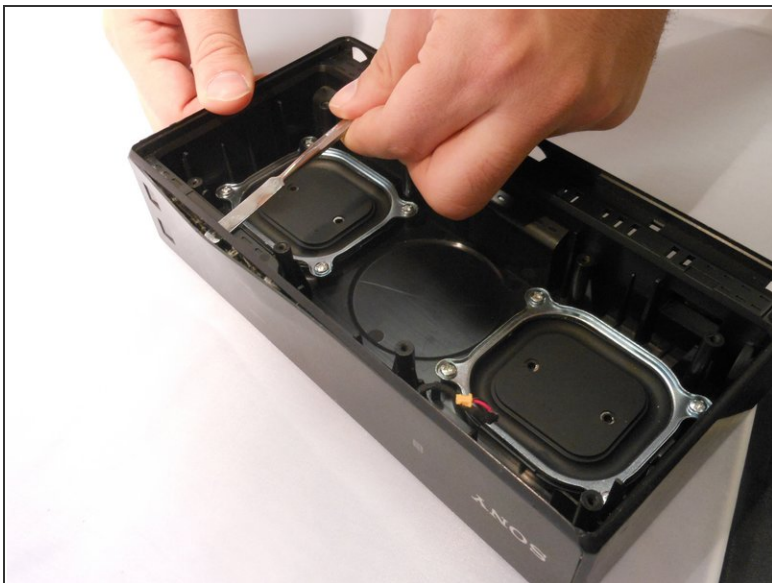
- Unplug the 6-pin speaker connector and 2-pin microphone connector from the motherboard by squeezing the sides of the plastic ends.

## Step 8 — Button Pad



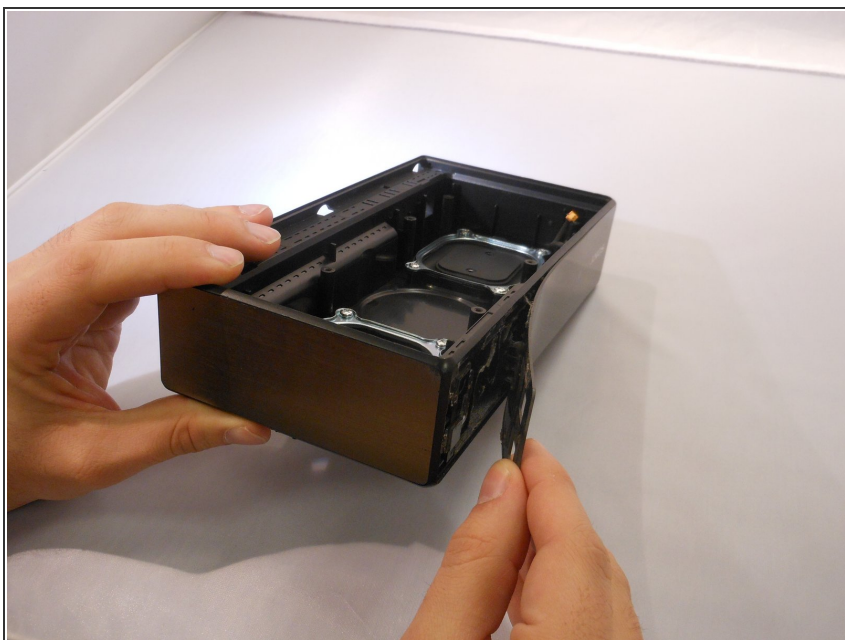
- Unplug the electrical cord from the button pad.

## Step 9



- Using both the plastic opening tool and metal spudger gently pry open the cover from the top of the speaker.

## Step 10



- Gently remove the cover using your hands.
- ⓘ Make sure you remove the cover gently so it doesn't break.

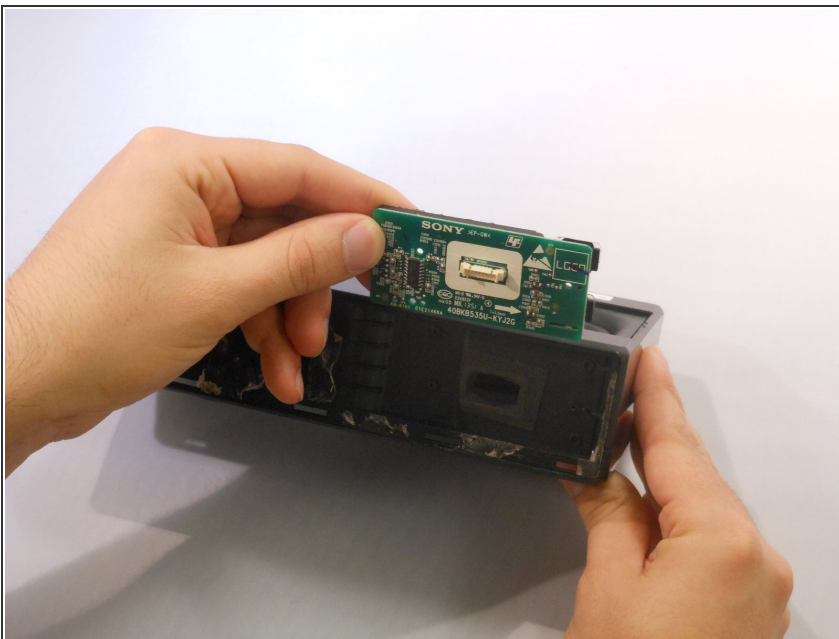


## Step 11



- Using the Phillips #00, unscrew the three 3.32mm screws keeping the button board in place.

## Step 12



- Gently remove the button pad from the speaker.

To reassemble your device, follow these instructions in reverse order.