

Garmin Dash Cam 20 Battery Replacement

This guide will walk users through removing the...

Written By: Jesse Hillman



INTRODUCTION

This guide will walk users through removing the Dash Cam's casing revealing the internal components, allowing access to rechargeable battery.

TOOLS:

T5 Torx Screwdriver (1)

Metal Spudger (1)

Tweezers (1)

T6 Torx Screwdriver (1)

Heavy-Duty Spudger (1)

Step 1 — Internal Assembly



 Be sure to turn off the Dash Cam by pressing the power button.

Step 2



- Rotate the Dash Cam to where the socket faces you.
- Remove the 9 mm screw using the Torx T6 screwdriver.

Step 3



- Remove the Dash Cam socket piece.

Step 4



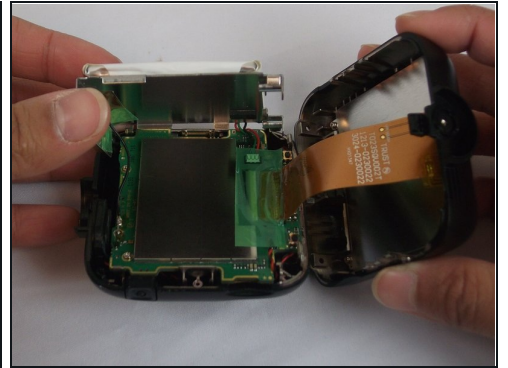
- Rotate the Dash Cam to where the product information faces you.
- Remove the two 5 mm screws using the Torx T5 screwdriver.

Step 5



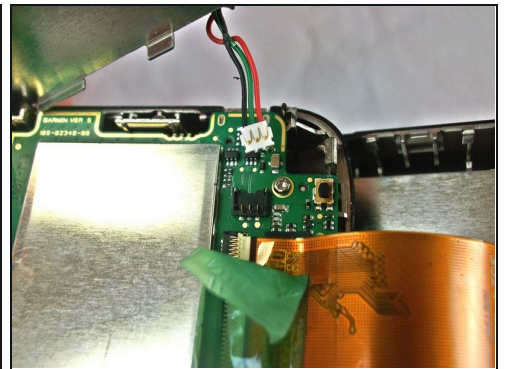
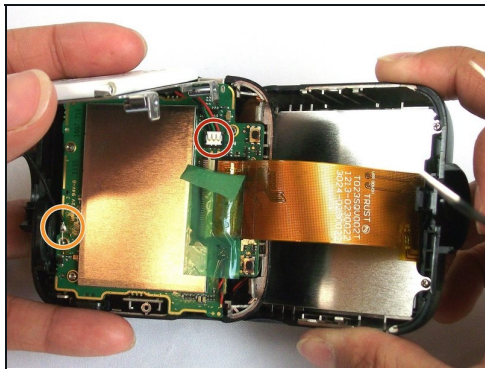
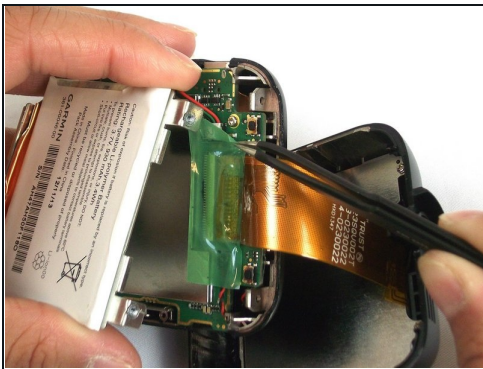
- Remove top case from the bottom case.
- ① The compact nature of the casing requires use of the metal spudger for needed leverage.

Step 6



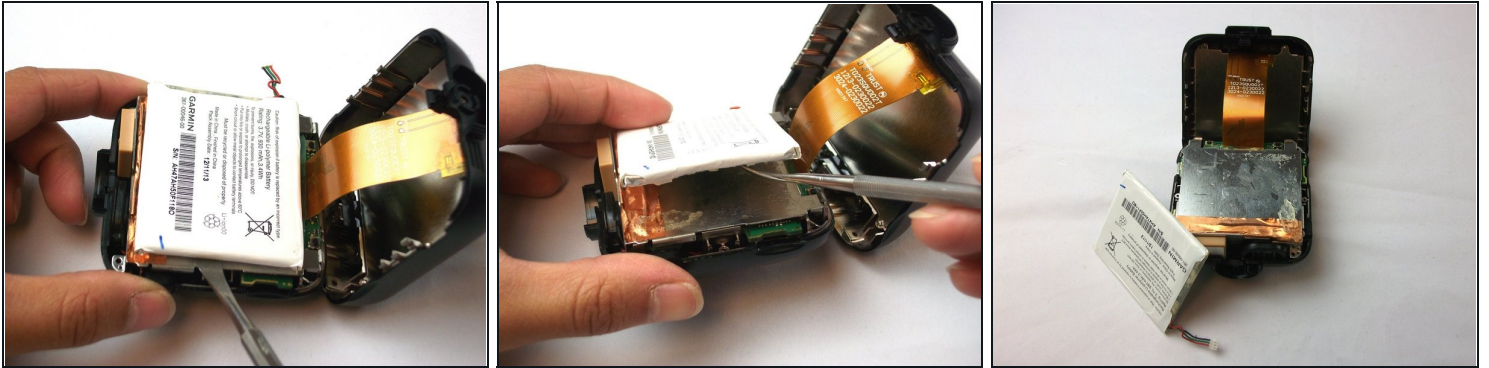
- Remove the two 5mm screws using the Torx T5 screwdriver
- ① By removing the screws, the metal battery frame will now become free from the rest of the device.

Step 7 — Battery



- Remove the green tape overlying the pin connector with [tweezers](#).
 - Remove the pin connector using tweezers.
- ⚠ Do not break black cord connection between motherboard and metal mount (orange circle).

Step 8



⚠ This step shows the use of an incorrect tool. Only use ESD safe tools when handling the battery.

- With the the nylon spudger, lift the battery to expose and stretch the glue. Cut the glue residue by gliding the tool from left to right.

To reassemble your device, follow these instructions in reverse order.