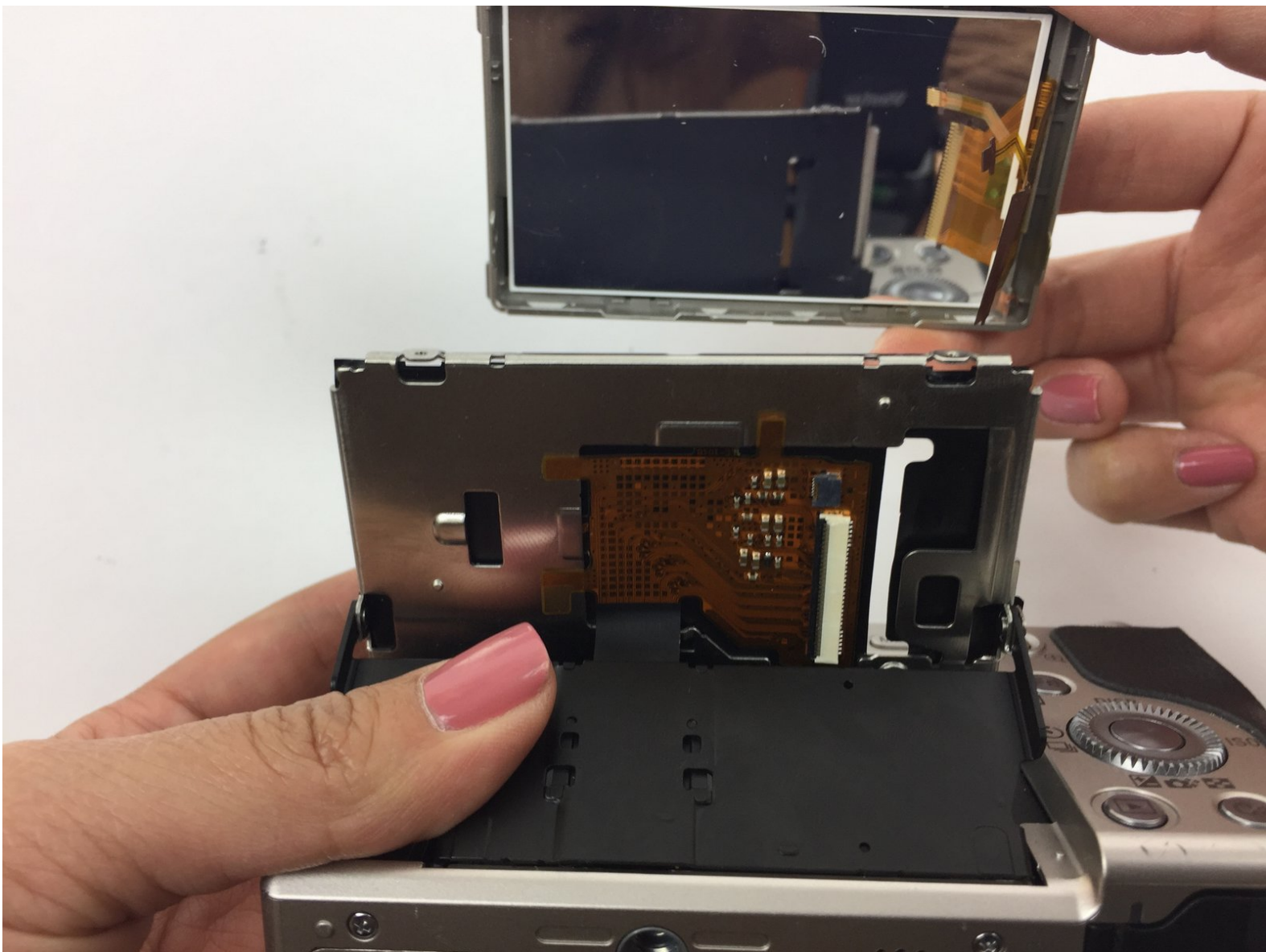




# Sony Alpha 6000 Screen Replacement

This repair guide will walk-through the steps on how to remove the screen of the Sony Alpha 6000 camera in order for it to be replaced.

Written By: Jennifer Vuu



## INTRODUCTION

If the screen of your Sony Alpha 6000 is damaged and needs to be replaced then this guide is for you. This removal process is susceptible to breakage due to the amount of force that may be required in removing certain components.



### TOOLS:

- [Phillips J00 Screwdriver](#) (1)
  - [Tweezers](#) (1)
  - [iFixit Opening Tools](#) (1)
-

## Step 1 — Battery



- Make sure the camera is turned off by turning the switch to OFF.

## Step 2



- Flip the camera around to access the battery compartment.
- Slide the battery compartment lock to the left to unlock it.

### Step 3



- Locate the blue latch that holds the battery in.

### Step 4



- Push the latch back to release battery.



## Step 5



- The battery can now be taken out of its compartment.

## Step 6 — Screen



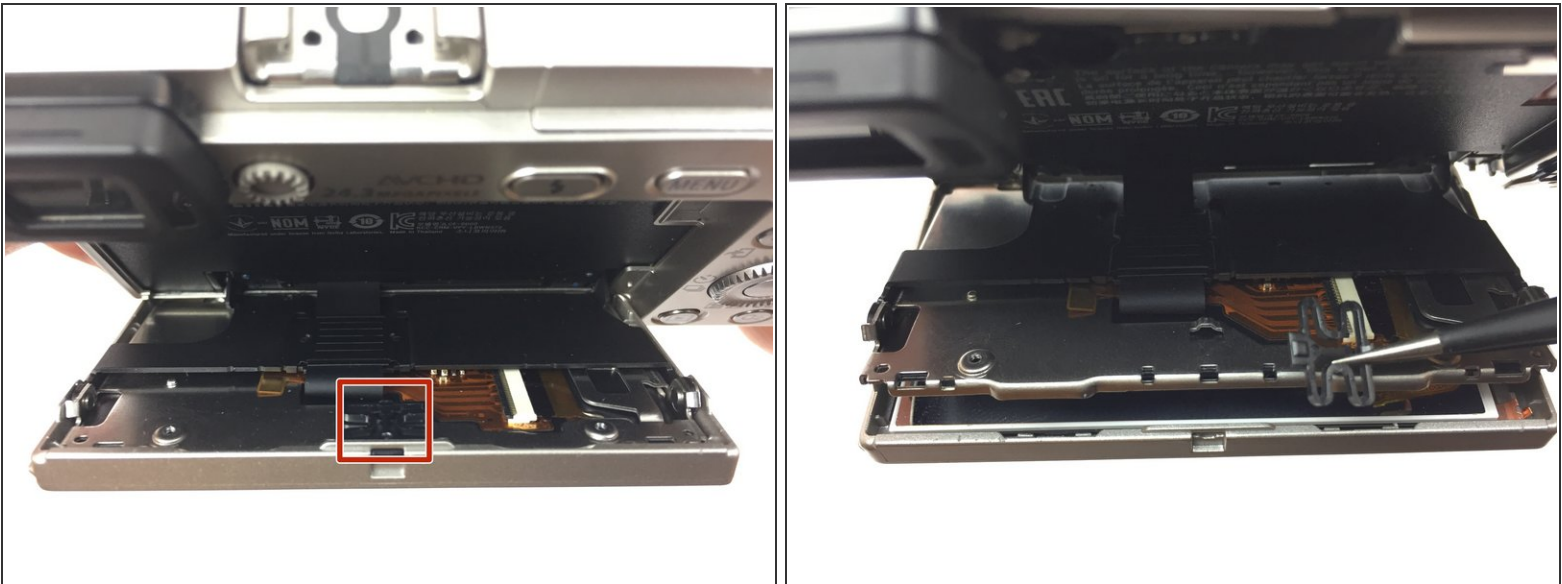
- Locate and unscrew the two 3 mm screws on the bottom of the screen.
- Pull the screen out from the top to reveal the two screws behind the screen; unscrew the two 3 mm screws.

## Step 7



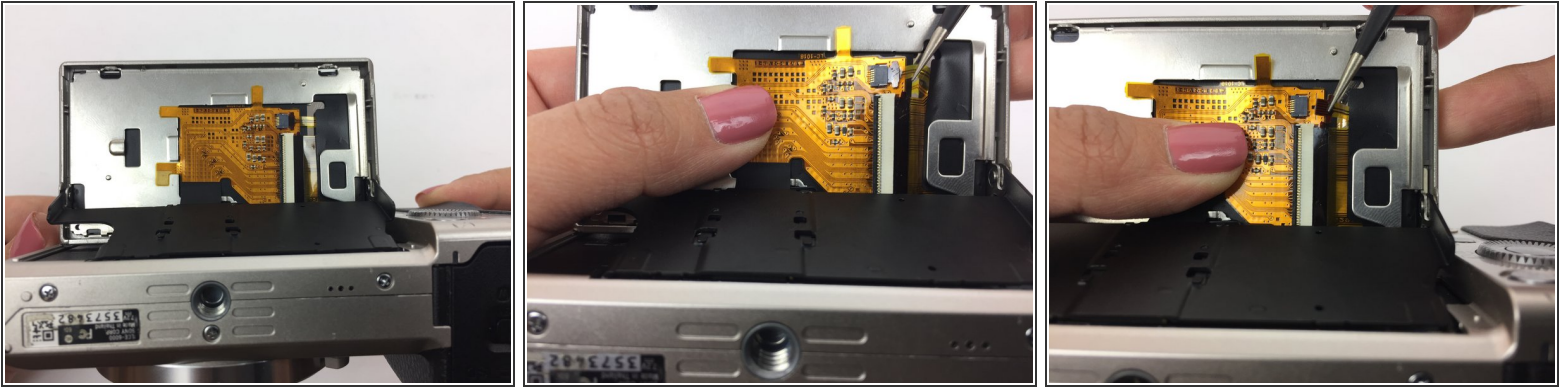
- Flip the screen so it is facing up and then have the bottom of the camera facing yourself.
- Using a spudger, remove the larger back panel.
- Flip the camera right side up and pull back the screen.
- Remove the smaller black panel on the back of the screen.

## Step 8




- Locate the small "H" shaped clip on the back of the screen.
- Remove the clip with tweezers

## Step 9

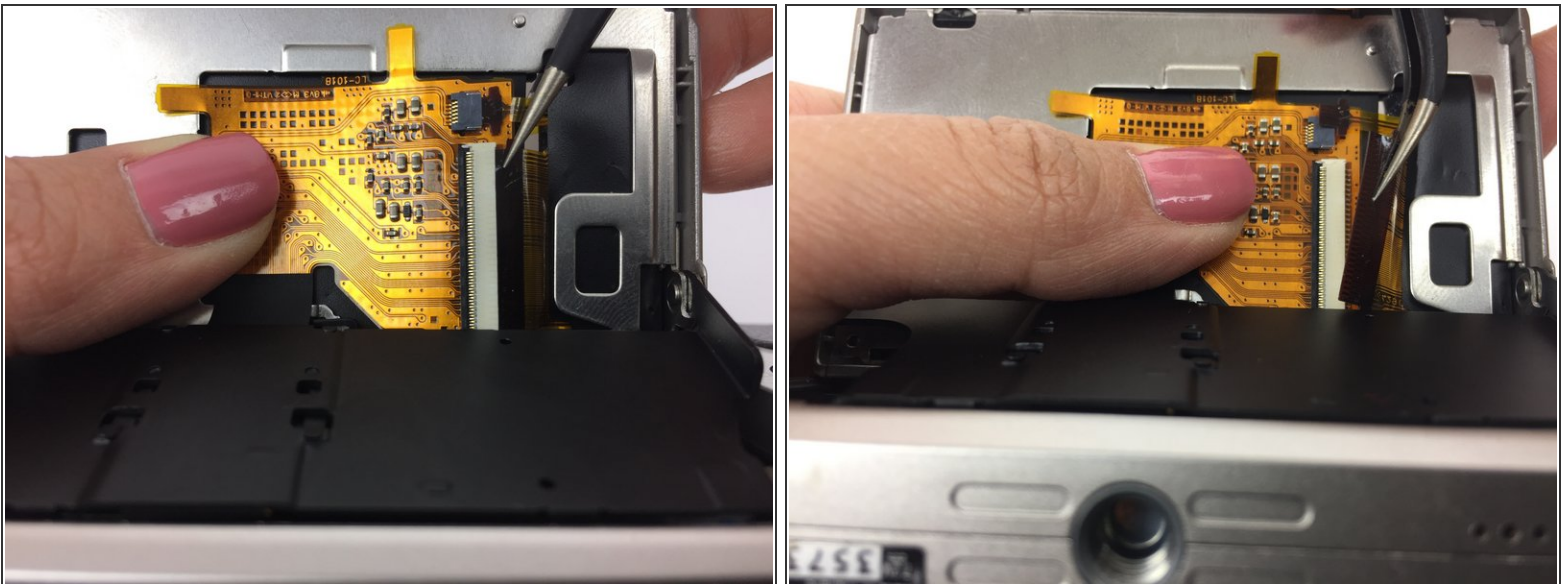


- Flip the screen back so it is facing up and then have the bottom of the camera facing you. The yellow circuit board should now be exposed.

- Hold down the yellow circuit board that the ribbon cables are attached to.

 Using tweezers, remove the smaller ribbon cable. This may require extra force that could damage the ribbon cable.

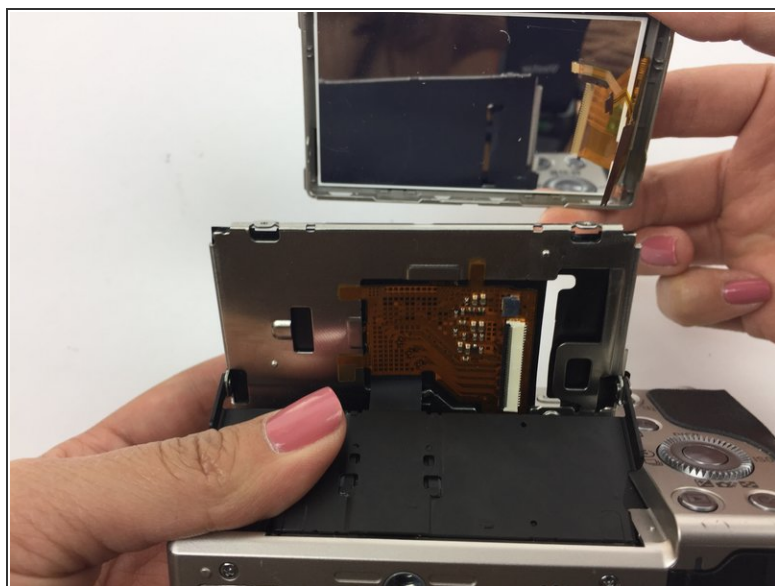
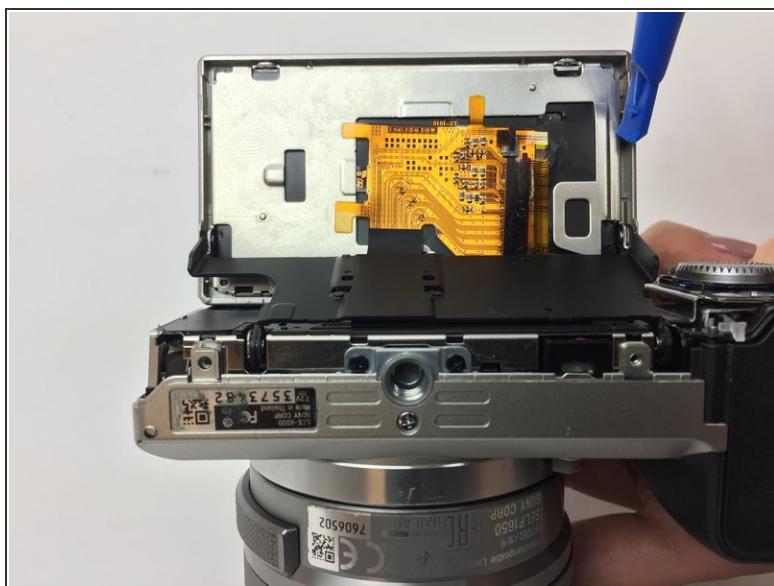
## Step 10



 Remove the larger ribbon cable. This may require extra force that could damage the ribbon cable.



## Step 11



- Using a plastic opening tool, separate the silver panel from the actual screen.
- Carefully slide the ribbon cables through the narrow opening to fully remove the screen.

Now your screen is ready to be replaced! To reassemble your device, follow these instructions in reverse order.