



Hot Tools HPK12 Prerequisite Only

This is the first step to replace most parts of the Hot Tools HPK12 flat iron. This is a prerequisite guide.

Written By: Aaron Whitlock



INTRODUCTION

In this replacement guide, we will walk you through the first steps to take to replace most things on your Hot Tools HPK12 flat iron. Be sure to have the device powered off, unplugged, and completely cooled down before beginning.

TOOLS:

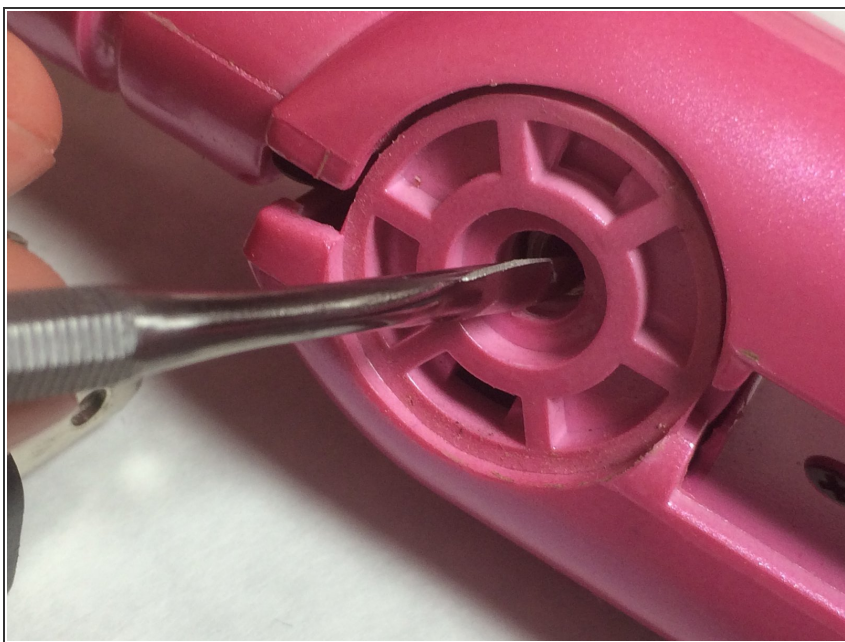
- [Phillips #0 Screwdriver](#) (1)
 - [JIS #0 Screwdriver](#) (1)
 - [Phillips #1 Screwdriver](#) (1)
-

Step 1 — Prerequisite Only



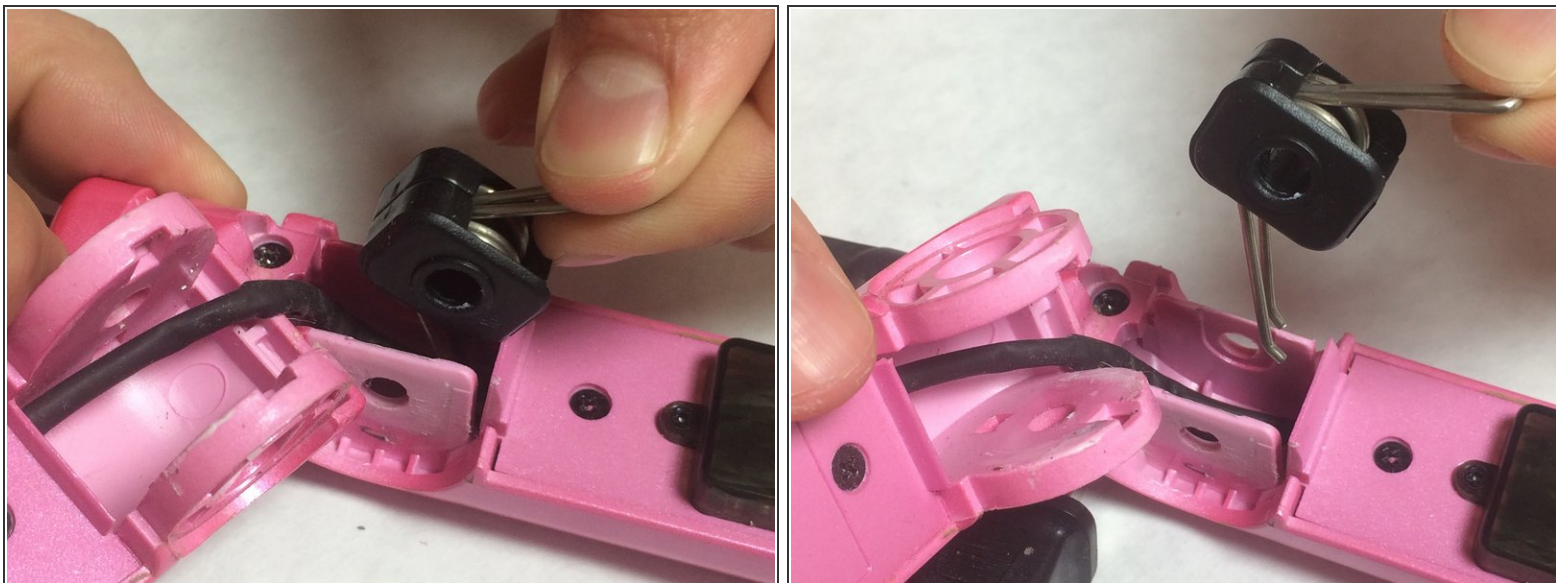
- Remove round plastic cover near cord base by prying under the side with the metal spudger.
- Flip the device and remove the other round plastic cover near the base of the cord.
- Use the Phillips #1 screwdriver to remove the 5.5mm PH1 screw and washer under the plastic cover and set both aside.

Step 2




- Use the metal spudger to push the center pin through the center pin through to the other side.

Step 3



- Lift back plastic cover to expose spring assembly.

 Be careful not to damage the power cord by bending or twisting it too much while performing this step.

- Grip the exposed end of the spring assembly and remove it.

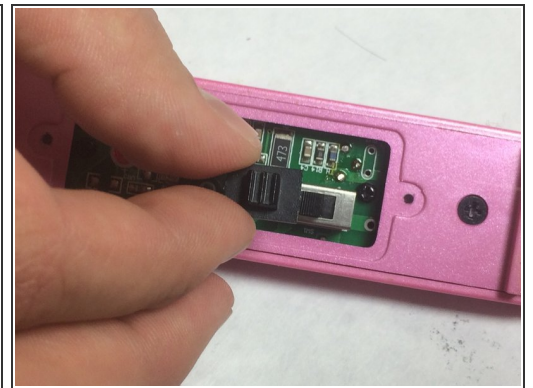
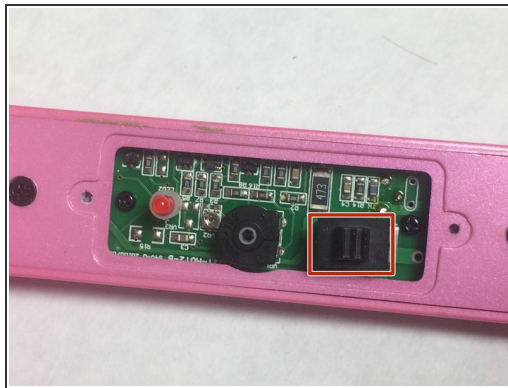
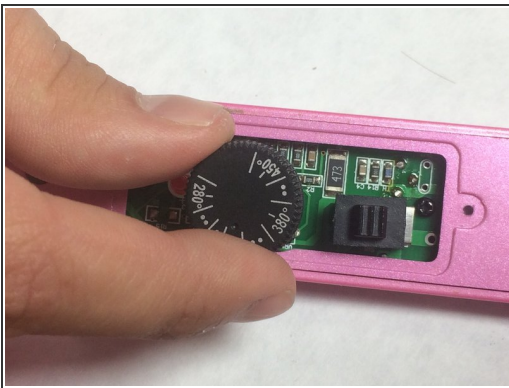
 The side with the two ends of the spring goes into the recessed area of the iron

Step 4



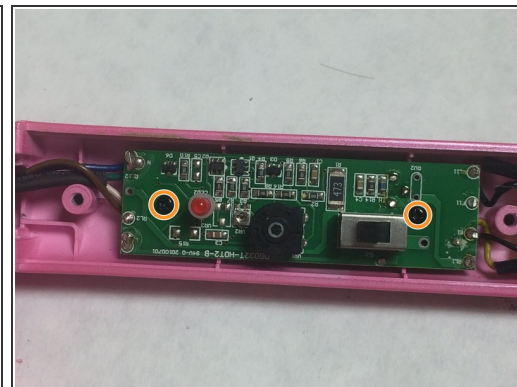
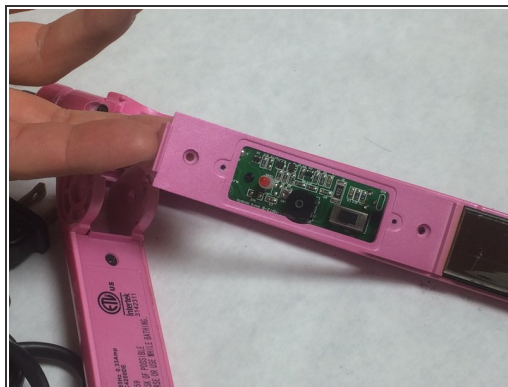
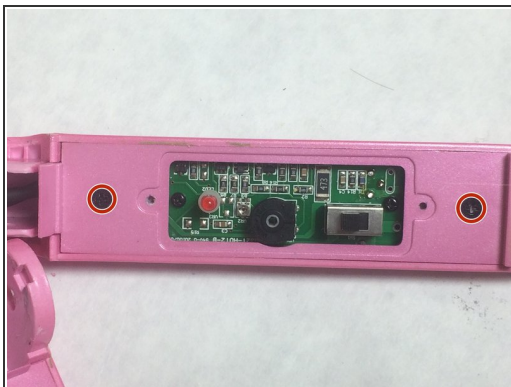
- Use the JIS #0 screwdriver to remove the two 3.5mm “J0” screws that attach the control assembly cover to the flat iron base.

Step 5



- Lift upward on the control assembly cover to remove it from the flat iron base.
- Remove dial and switch cover and set aside.

Step 6



- Use your JIS #0 screw driver to remove the two 6mm “J0” screws that are attached to the flat iron base and set them aside.
- Lift the backing plate upwards to remove it from the flat iron.
- Use the Phillips #0 screwdriver to remove two 4mm “PH0” screws that attach the circuit assembly to the flat iron base.

To reassemble your device, follow these instructions in reverse order.