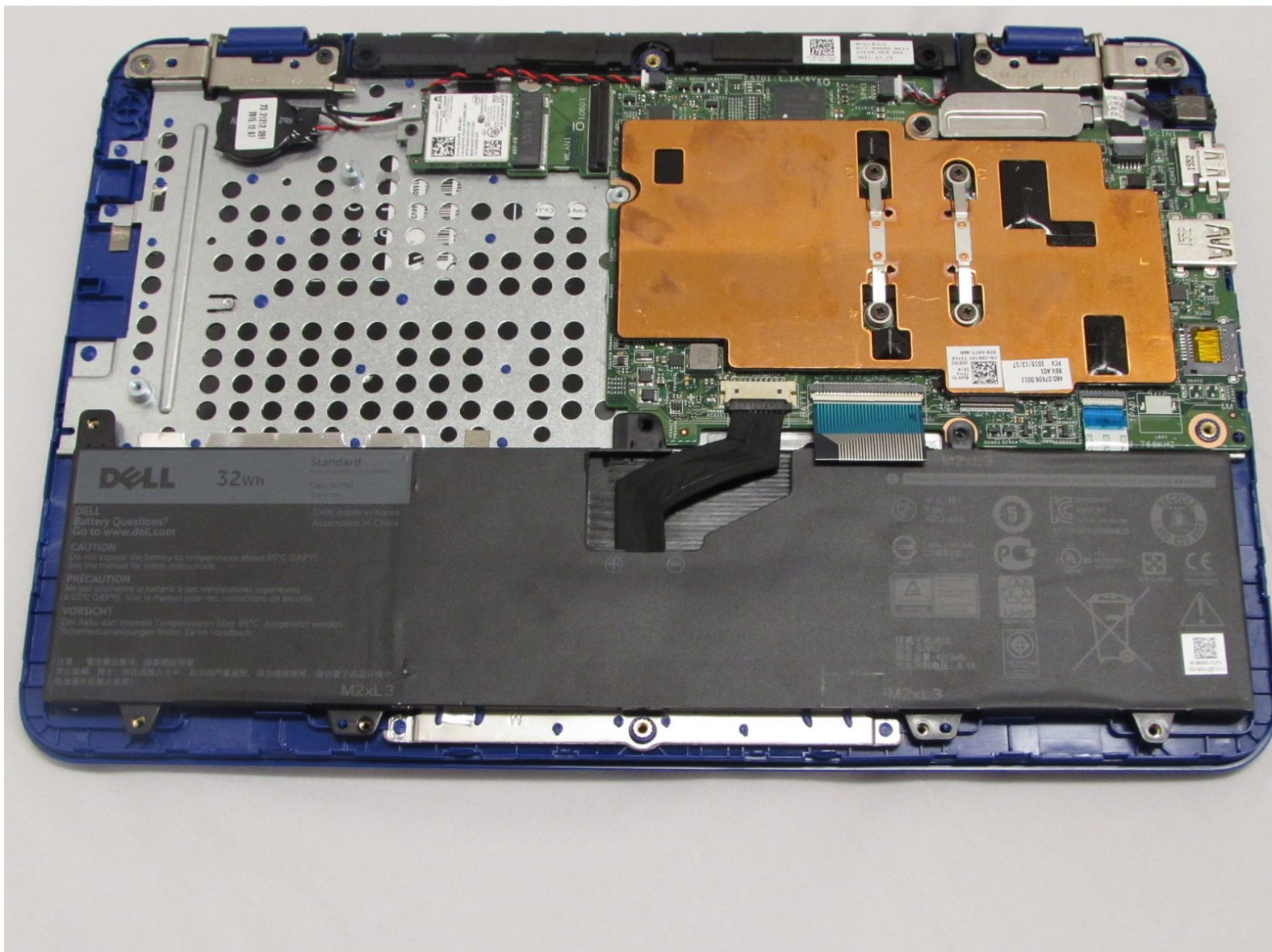




Dell Inspiron 11-3162 Battery Replacement

This guide will help you replace the battery of the Dell Inspiron 11-3162.

Written By: Dominic DeLong



INTRODUCTION

You'll find that this will help improve your battery life to factory new! Always be careful when working with a battery.



TOOLS:

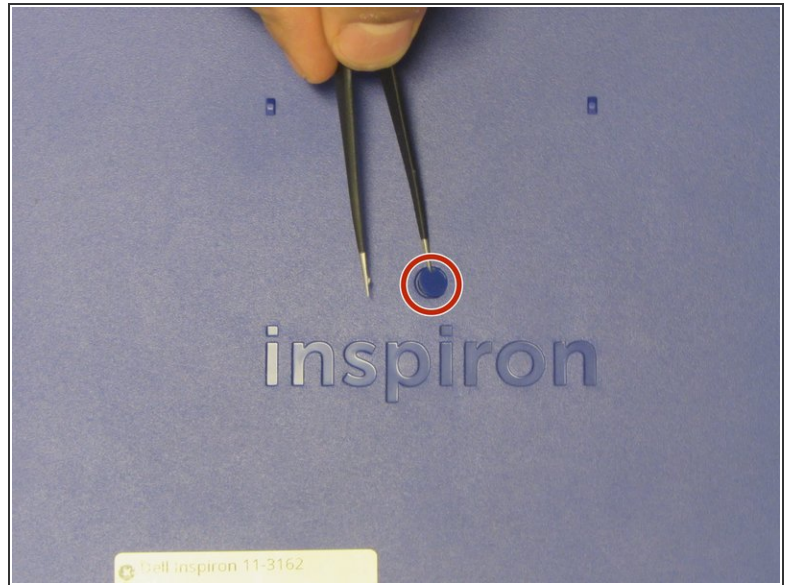
- [Phillips #0 Screwdriver](#) (1)
- [Spudger](#) (1)
- [Tweezers](#) (1)



PARTS:

- [Dell Inspiron 11 3162 and 3168 Replacement Battery](#) (1)

Step 1 — Back Cover Removal



i Before you begin, be sure to turn off your laptop and unplug it from the outlet.

- Use tweezers to pry and remove the center screw cover on the back cover.

Step 2



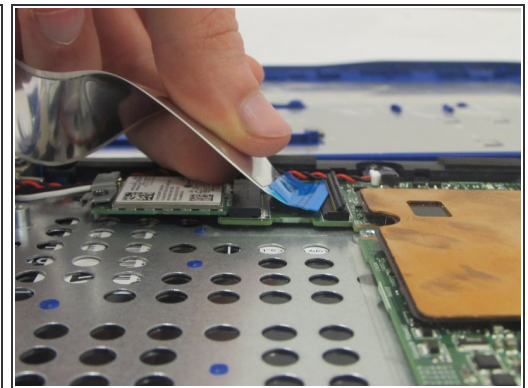
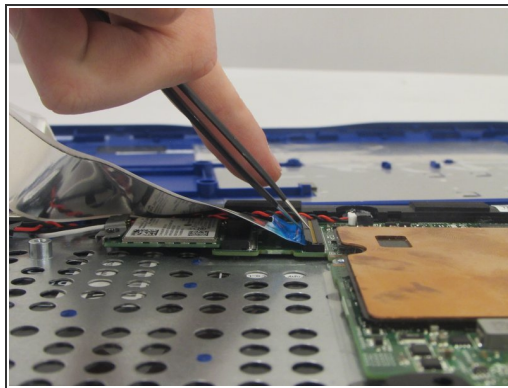
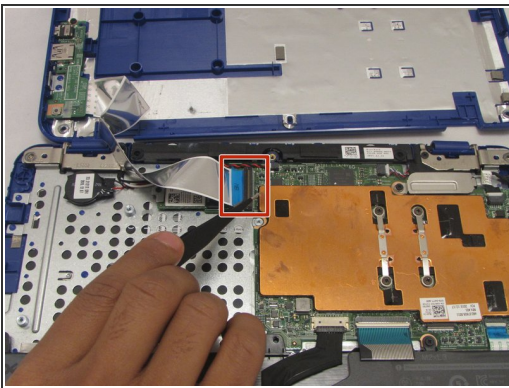
- Use a Phillips screwdriver to unscrew the nine 6.8 mm screws securing the back cover.

Step 3



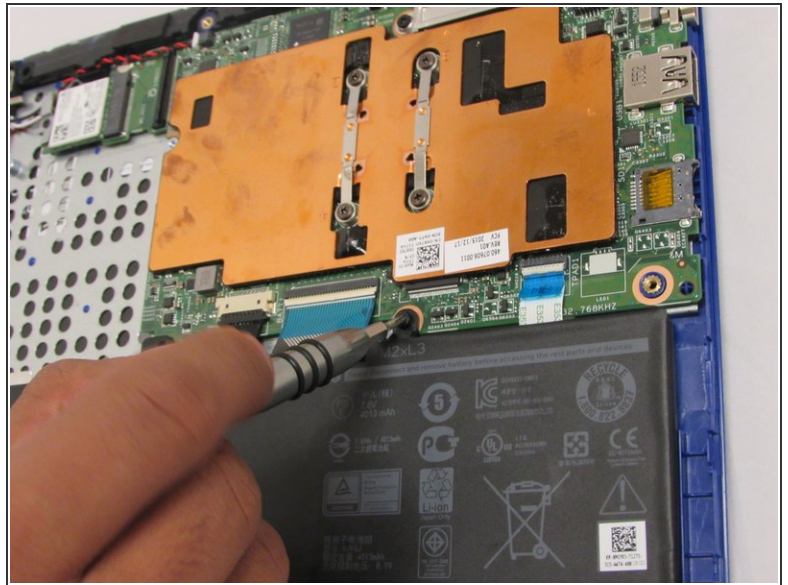
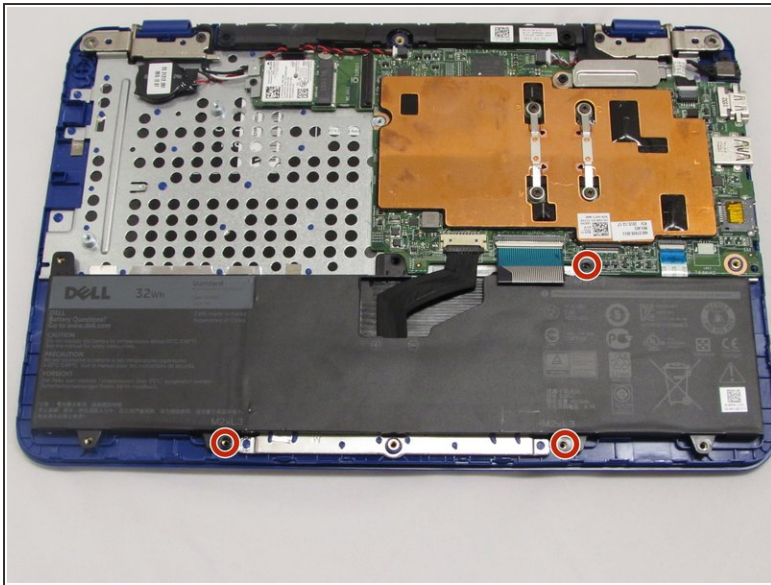
- Use a spudger to pry around the base edges of the back cover to loosen it from the laptop.
- ⚠ Do not fully remove the cover, as it is still attached to the laptop with cables.

Step 4



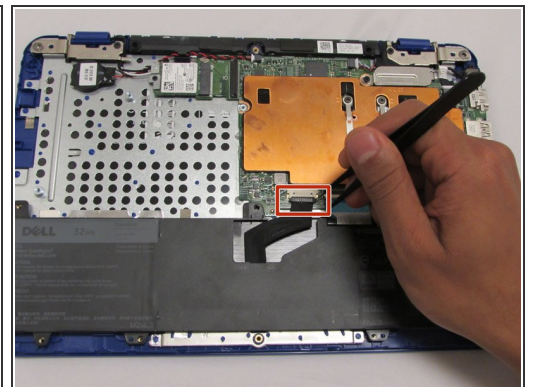
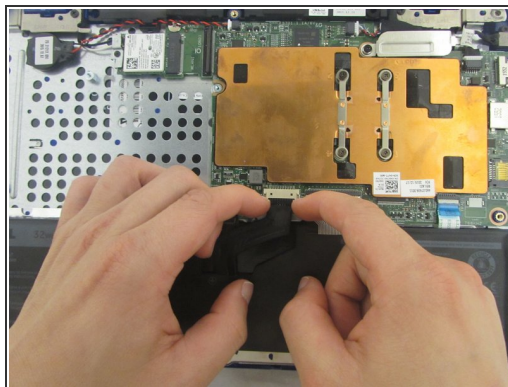
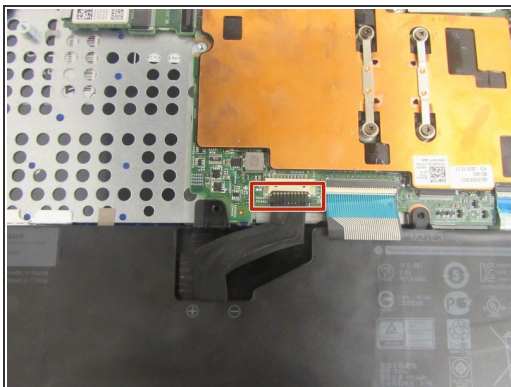
- ⓘ If you are only replacing the battery, you can skip this step. Be careful not to strain the still-connected cable as you work.
- Unlock the wide ZIF connector securing the flex cable.
- ⓘ To unlock a [ZIF connector](#), use the tip of a spudger or your fingernail to flip up the small, hinged locking flap.
- Pull the ribbon cable outwards to disconnect the back cover from the motherboard.

Step 5 — Battery



- Use a Phillips screwdriver to unscrew the three 4 mm screws securing the battery.

Step 6



- Use your fingers (or a set of tweezers) to disconnect the battery cable from the motherboard by gently pulling it towards the battery.
 - ⚠ Pull parallel to the battery, not straight up.
- Lift and remove the battery from its recess.

To reassemble your device, follow these instructions in reverse order.

For optimal performance, after completing this guide, [calibrate](#) your newly installed battery.

Take your e-waste to an [R2 or e-Stewards certified recycler](#).

Repair didn't go as planned? Try some [basic troubleshooting](#), or ask our [Answers community](#) for help.