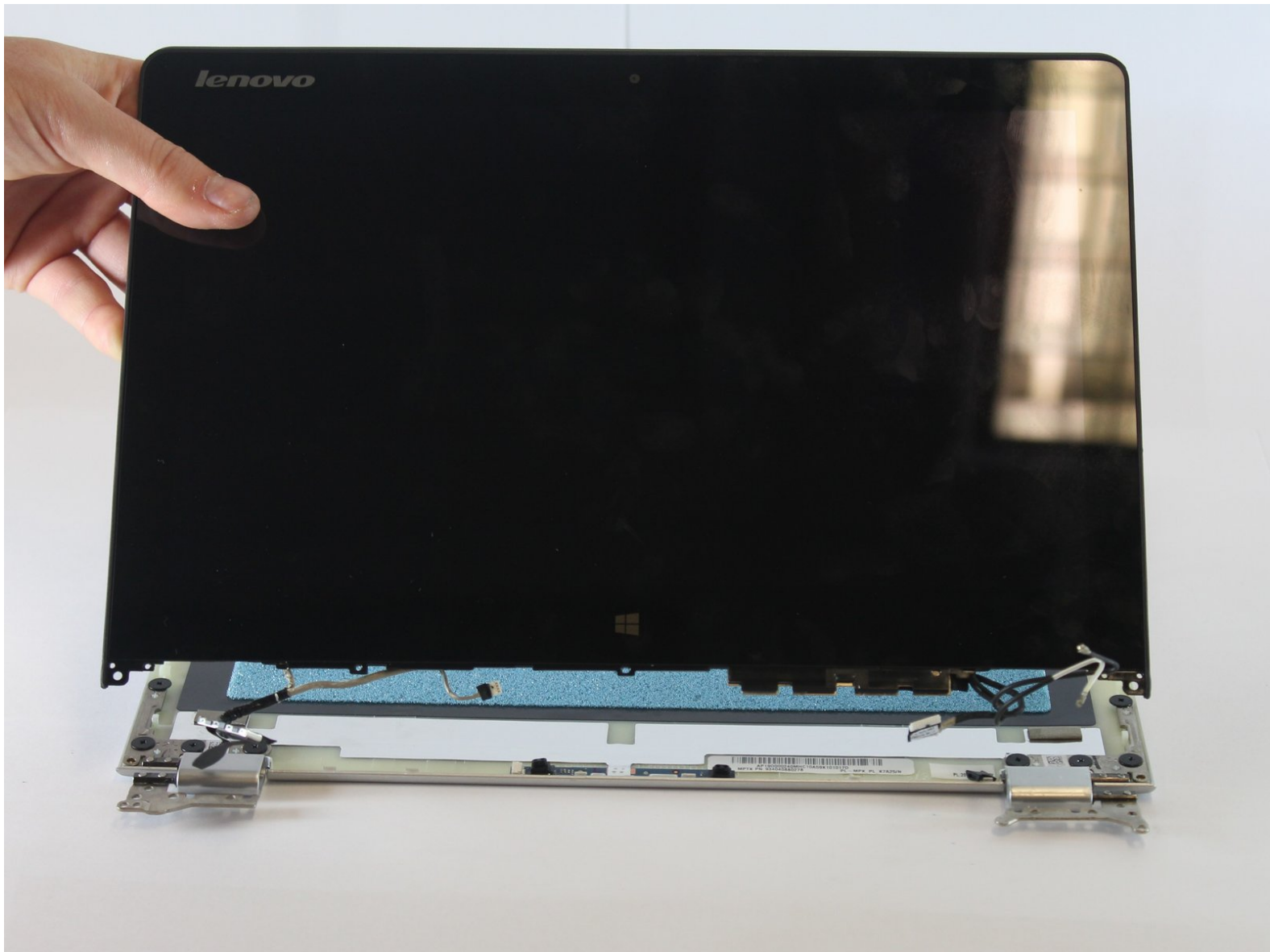




Lenovo Yoga 700-11ISK LCD Replacement

Replacing the screen on your Lenovo Yoga 700 11ISK.

Written By: Gabrielle Bullen



INTRODUCTION

If you are having troubles with your Lenovo's monitor screen or know that you have broken it, you may need to replace your LCD or screen.



TOOLS:

- [T7 Torx Screwdriver](#) (1)
- [Phillips #1 Screwdriver](#) (1)
- [T5 Torx Screwdriver](#) (1)



PARTS:

- [Lenovo Yoga 3 and IdeaPad Yoga 700-11 LCD Panel](#) (1)

Step 1 — Back Panel



- Flip your device so that the bottom panel is facing up.
- Remove the eleven 5mm Torx T5 screws from the back panel.

Step 2



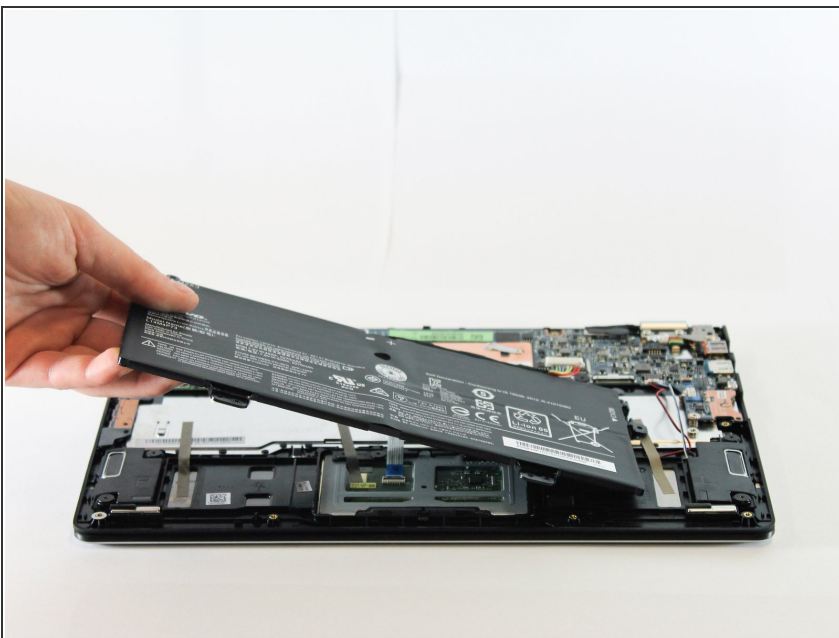
- Use a spudger to unclip clips on the front and near the USB ports on each side
- Lift the back panel off

Step 3 — Battery



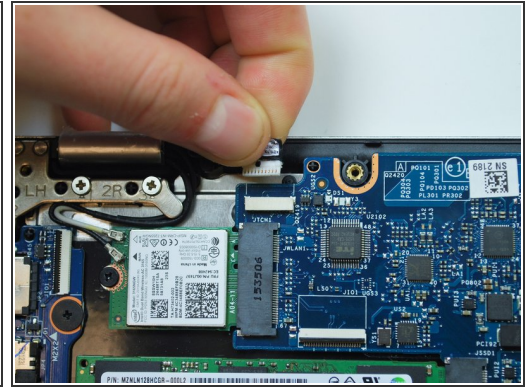
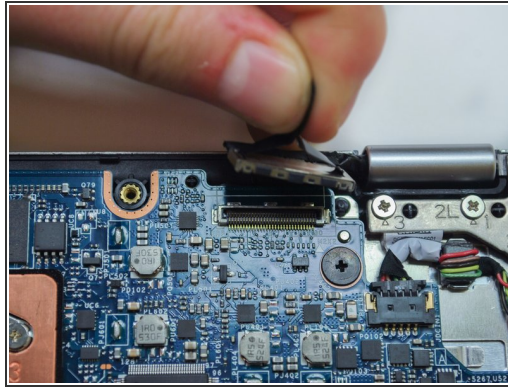
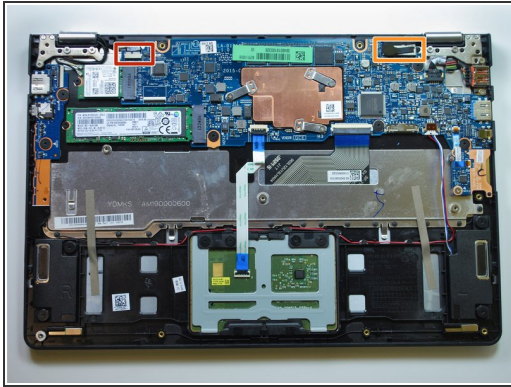
- Remove the two 3mm Phillips #1 screws holding the battery to the laptop chassis.
- Disconnect the battery from the IO board by holding the connector by the sides and gently pulling the connector out.

Step 4



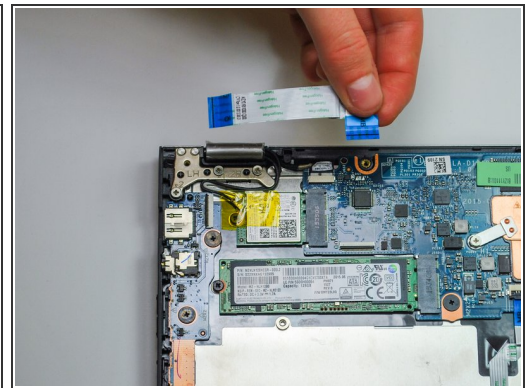
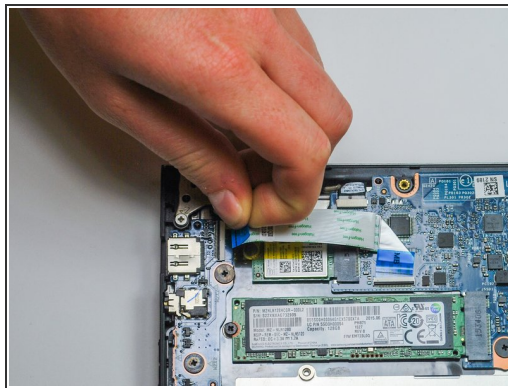
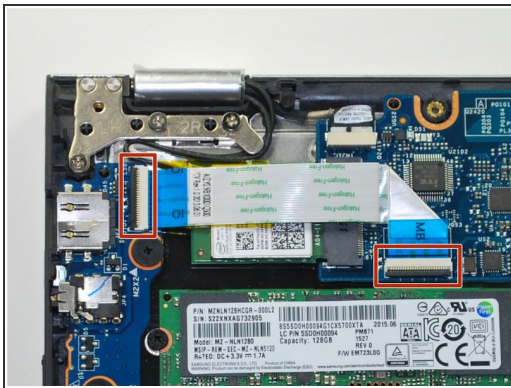
- Carefully remove the battery from the laptop.
- ⚠ Make sure that all wires still connected to the laptop are out of the way and not pulled out with the battery.

Step 5 — LCD



- Disconnect the following cables attaching the LCD to the laptop:
 - Touchscreen cable
 - EDP cable

Step 6



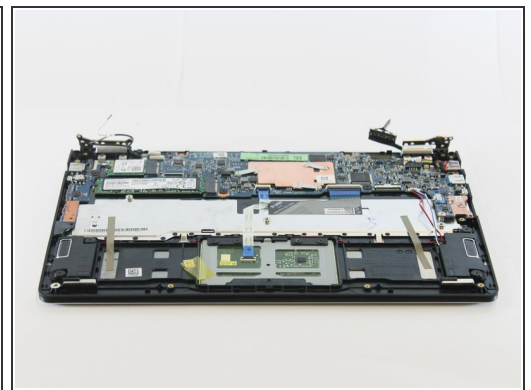
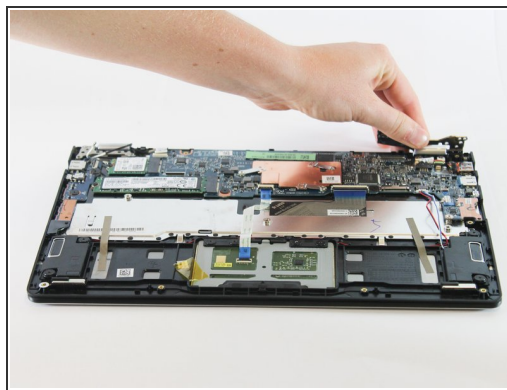
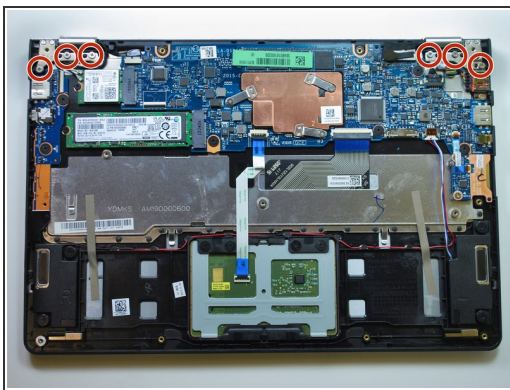
- Place the laptop with the LCD facing down so that the hinges face opposite you.
 - Disconnect both ends of the two blue ZIF (zero insertion force) connectors in the upper left corner by gently flipping the black tabs on the connector and pulling up and away from both ends of the connectors.
- ⚠ Do not pull on the blue tab of the cable without lifting up the black tabs on the connectors. The cable should slide in and out effortlessly. If there is resistance when pulling the cable, double check the black tabs.

Step 7



- Unplug the black and white wireless LAN cables in the upper left corner by gently pulling upwards.
- ★ *To reinstall a wireless LAN card, note that the black cable goes to the MAIN jack, and the white to the AUX jack.*

Step 8



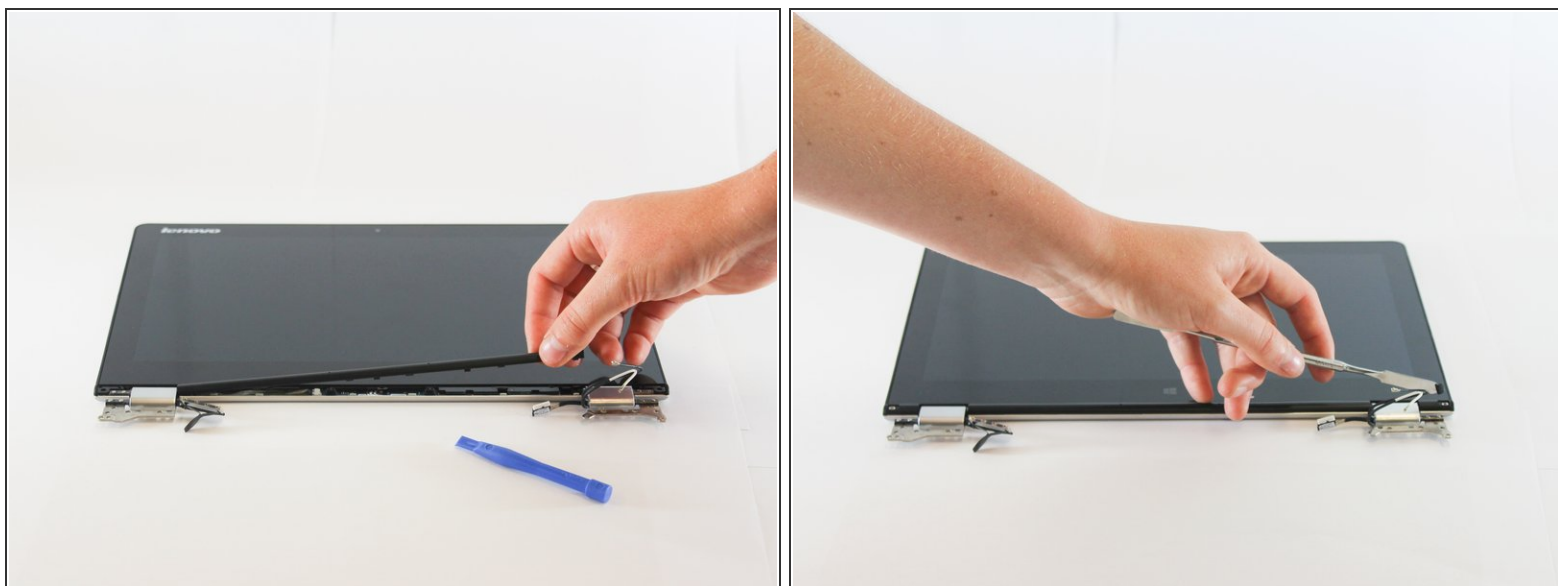
- Remove the six 5mm Phillips #1 screws located in the top left and right corners to free the hinges.
- Fully extend the hinges by prying upwards.

Step 9



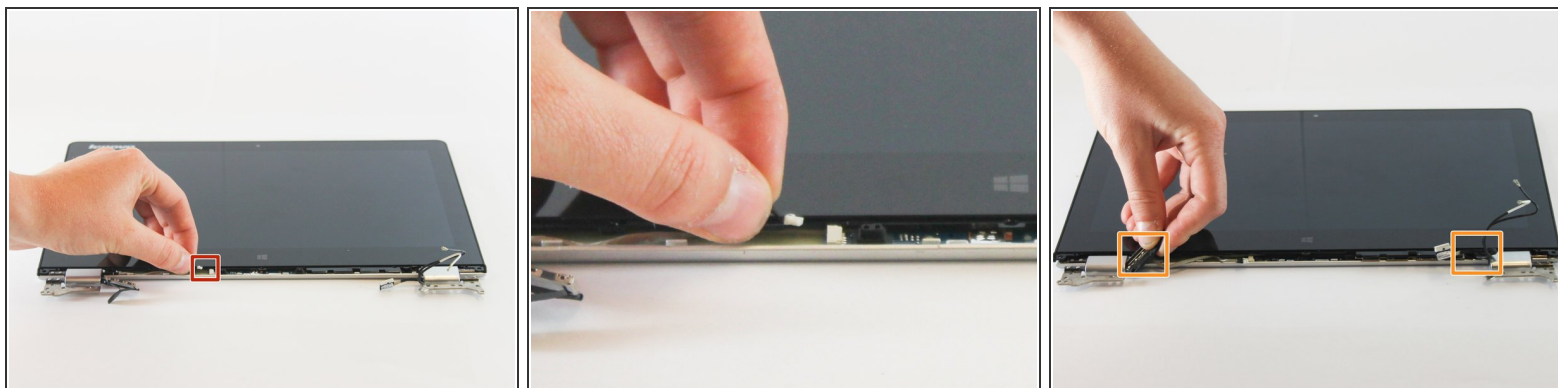
- Remove the base from the LCD by lifting it upwards.
- Flip the LCD so that the hinges face you and the screen faces upwards.
- Remove the two LCD bezel screw pads located in the bottom left and right outer corners by pulling them up and out.
- Remove the two 4.4 mm Phillips #1 screws located under the screw pads.
- Pry the two side hinge covers with a plastic spudger and pull them up and away from the LCD.

Step 10



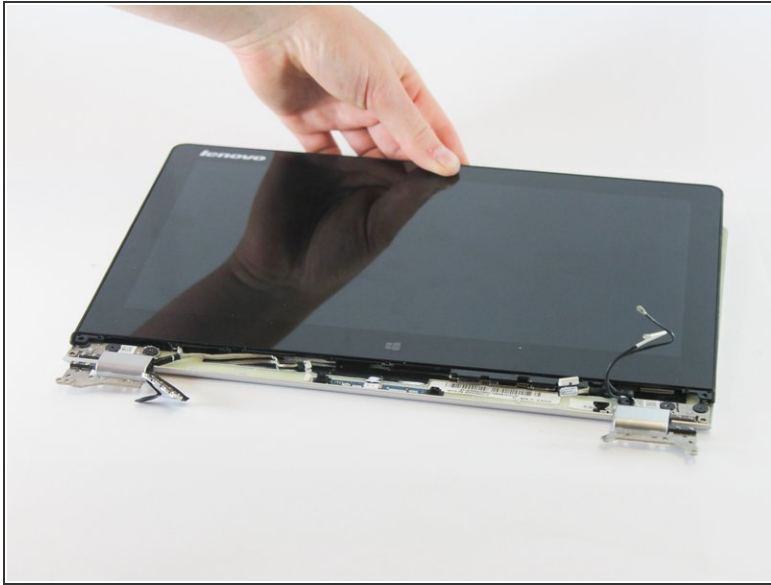
- Remove the LCD hinge cover by gently prying the pieces with a plastic spudger and lifting the hinge cover up and out.

Step 11



- Disconnect the white MIC board connector located near the center of the LCD bezel by pulling it out to the left.
- Flip the hinges up and remove the hinge rubbers by pulling the wires out and away from the hinges.

Step 12



- Remove the LCD by carefully pulling away from the hinges and upwards.

To reassemble your device, follow these instructions in reverse order.