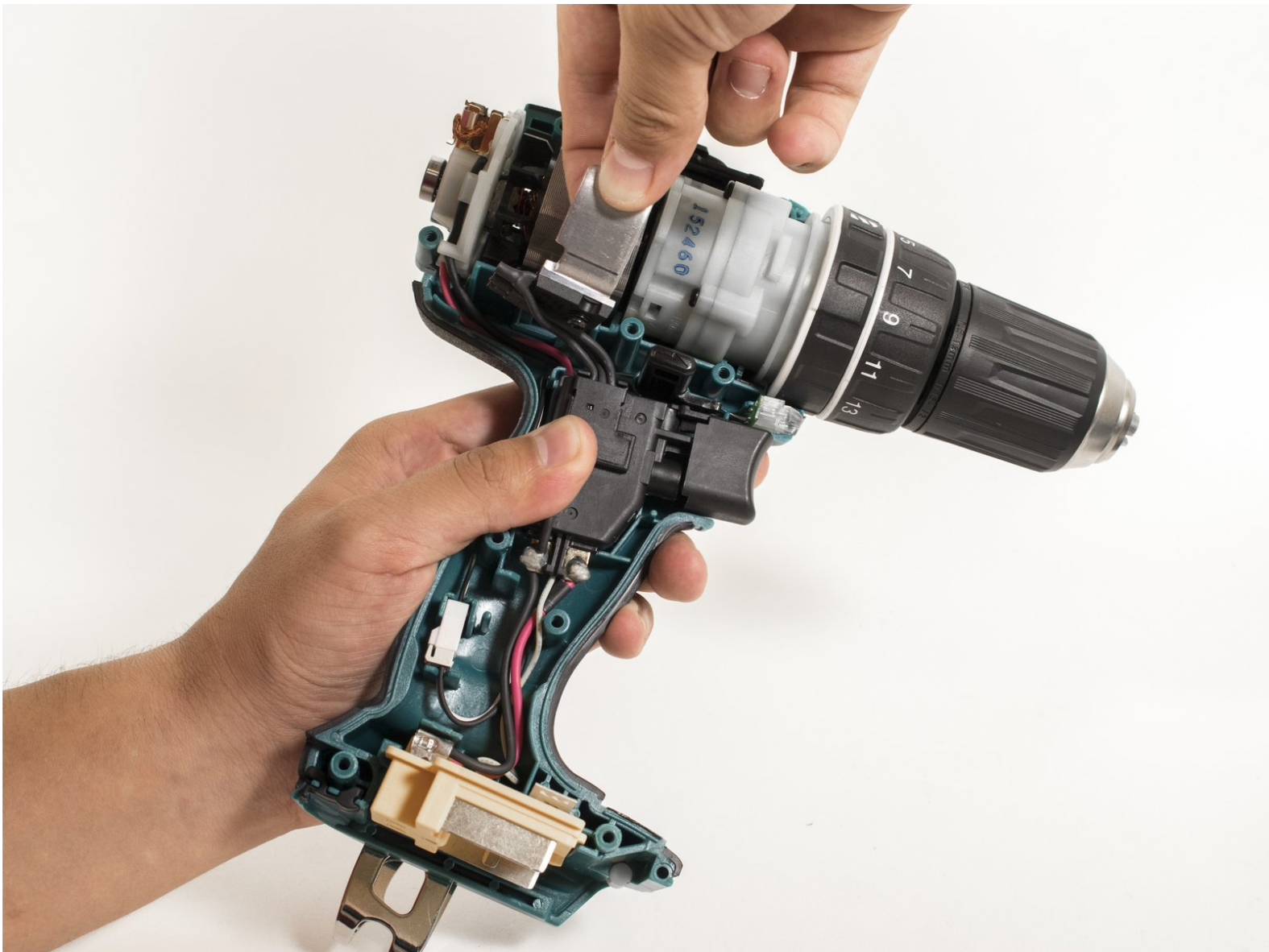




Makita XPH01 Gear Select Switch Replacement

This guide will show you how to replace the gear select switch for the Makita XPH01.

Written By: Eric Herwatt



INTRODUCTION

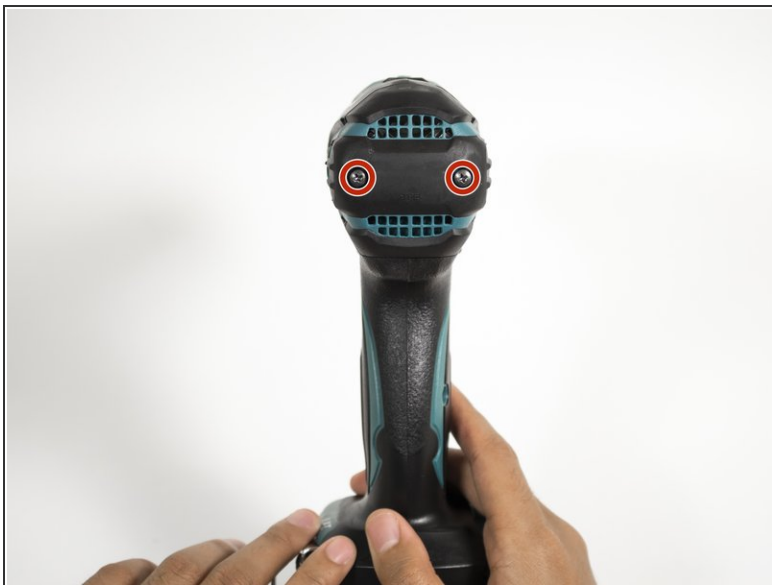
This guide will show you the necessary steps to locate and replace the gear select switch. It shows how to remove the battery and the outer casing in order to locate the gear select switch.



TOOLS:

- [Phillips #2 Screwdriver](#) (1)
-

Step 1 — Outer Casing



- Hold the drill upright with the back panel facing you.
- Unscrew the two 18 mm screws from the back panel using a Phillips PH2 screwdriver.

Step 2



- Apply slight pressure to the sides of the backplate and pull away from the drill.

Step 3



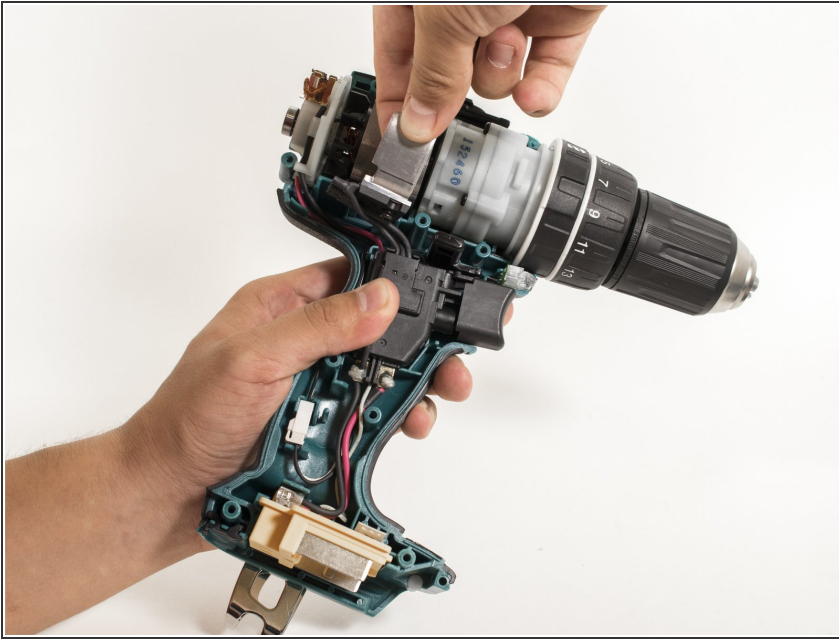
- Unscrew the nine 18 mm screws from the outer casing using a Phillips PH2 screwdriver.

Step 4



- Apply slight pressure to the sides of the outer casing and pull away from the drill.

Step 5 — Gear Select Switch




- Pull the silver metal clip located towards the back of drill away from the motor assembly.

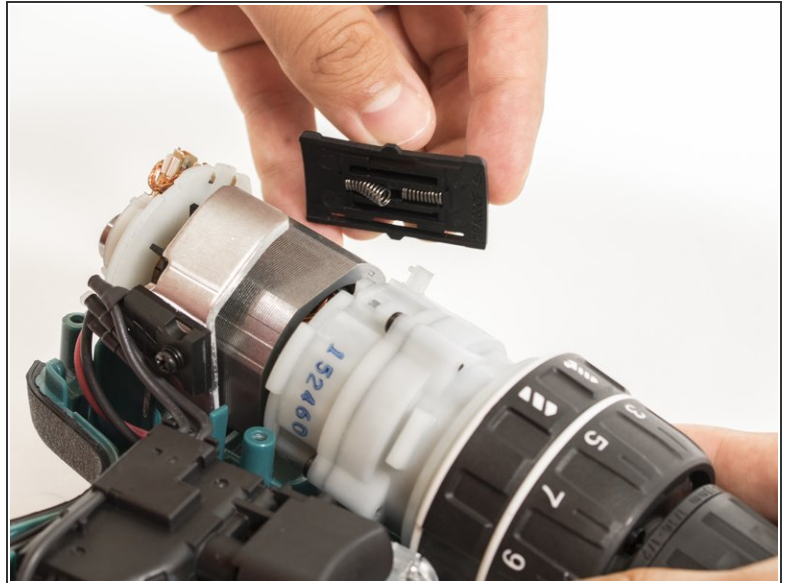
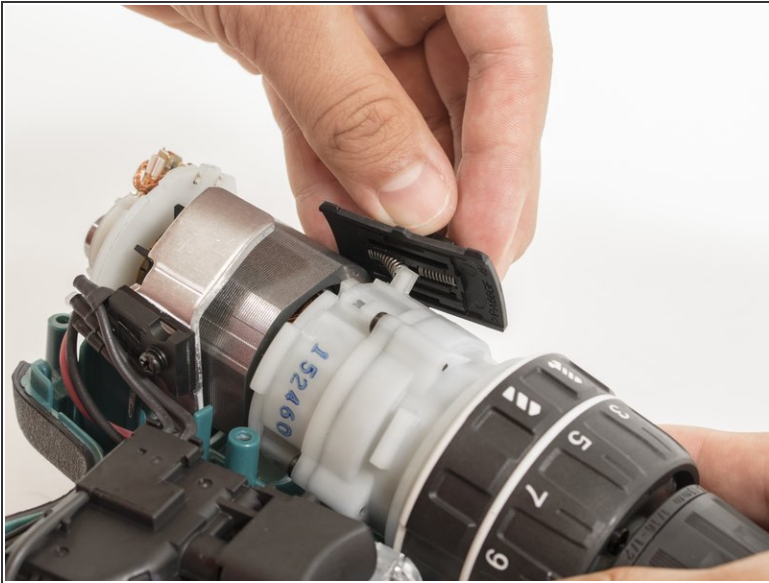
Step 6



- Gently grip the front of the motor assembly and pull it out of the plastic casing.

 The wires are still connected to the back of the motor assembly, so use caution when pulling the motor out. Failing to do this will result in parts falling off the back of the motor

Step 7



- Push gear select switch forward.
- Lift the gear select switch to separate it from the motor assembly.

To reassemble your device, follow these instructions in reverse order.