



Nintendo 3DS 2015 SD Card Reader Replacement

If your device won't read SD cards you may need...

Written By: Tyler Starr



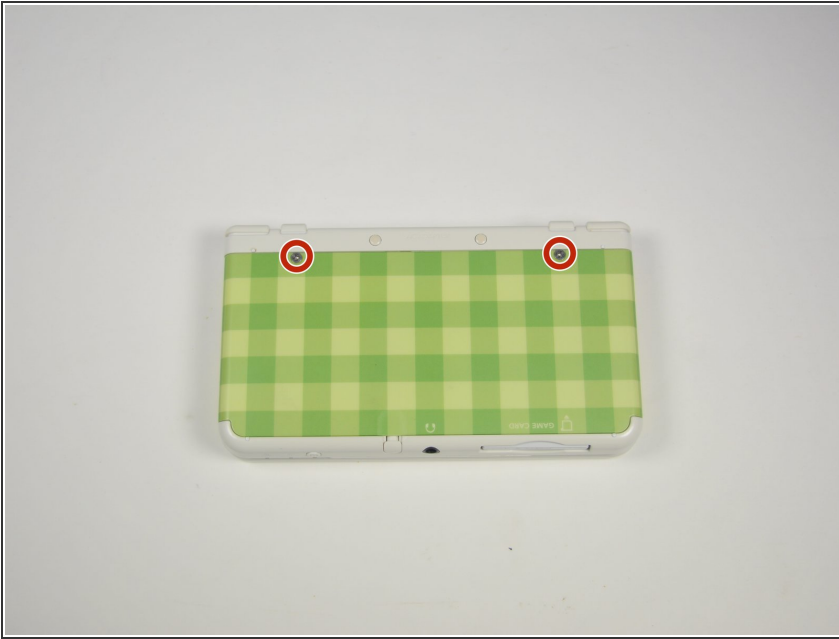
INTRODUCTION

If your device won't read SD cards you may need to replace the SD card reader. Be careful of the three tri-wing screws on the SD card reader, as these are soft and strip easily. Go slow and press down firmly on the screw.

TOOLS:

- [Phillips #0 Screwdriver](#) (1)
 - [iFixit Opening Tool](#) (1)
 - [Tri-point Y0 Screwdriver](#) (1)
-

Step 1 — Battery

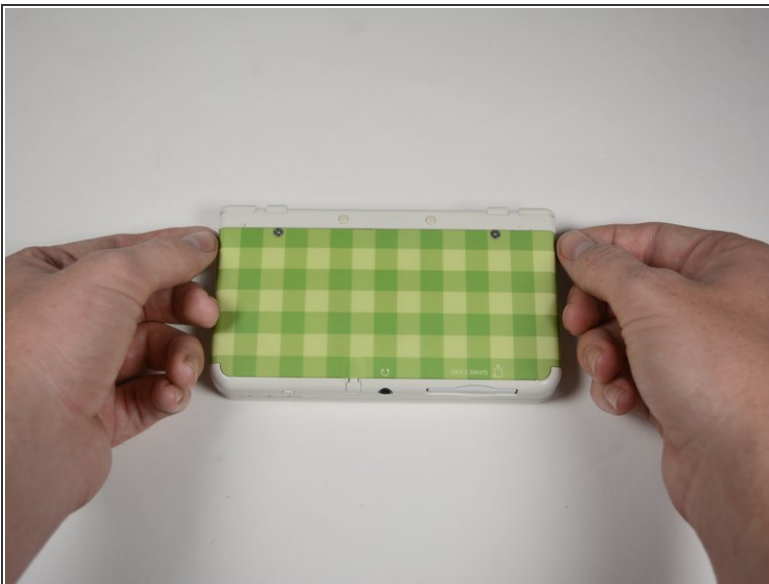


- Unscrew the two 3mm Phillips #0 head screws along the top edge of the device.

⚠ The screws on the back panel strip easily. Go slowly and press down firmly.

i The screws on the back panel are held in by locking washers, so they won't come out of the back panel.

Step 2



- Pull the top corner tabs of the front face plate outward and towards you.
- Pull the faceplate up and out of the slots at the bottom of the device.
- Set aside the back faceplate.

Step 3



- Insert a plastic opening tool into the notch at the top of the battery.
- Pry the battery up with the plastic opening tool.

Step 4 — SD Card Reader



- Unscrew the three 3mm Y0 screws along the right and bottom of the SD card reader.
- ⓘ The bottom of the SD card reader should slightly pop out after removing the screws.

Step 5

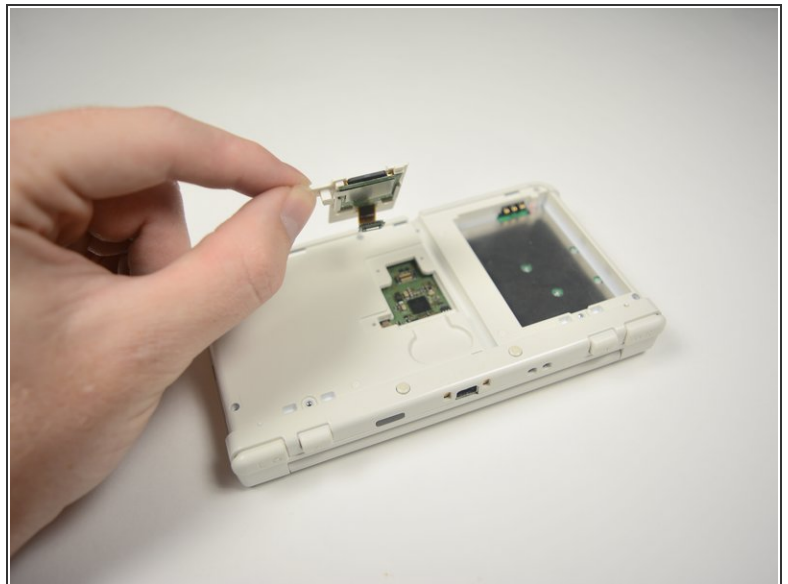


- Pull the SD card reader from the edge with two holes gently to free the tab at the top of the SD card reader.

⚠ Don't completely pull the SD card out of the device yet. There is a ribbon cable connected under the SD card reader.

- Reorient the device so that the power jack faces you.

Step 6



- Lift the SD card reader gently.
- Use a plastic opening tool to pry the SD card ribbon cable off the socket on the motherboard.
- Lift the SD card reader out off of the lower casing.

To reassemble your device, follow these instructions in reverse order.