



Dell Inspiron N5050 Hard Drive Replacement

Before disassembling this device further, have...

Written By: Kristy Mayo



INTRODUCTION

Before disassembling this device further, have a screwdriver and a plastic opening tool nearby. This section of the guide involves removing the keyboard, so make sure you carefully pull the keyboard cable to prevent damaging it.



TOOLS:

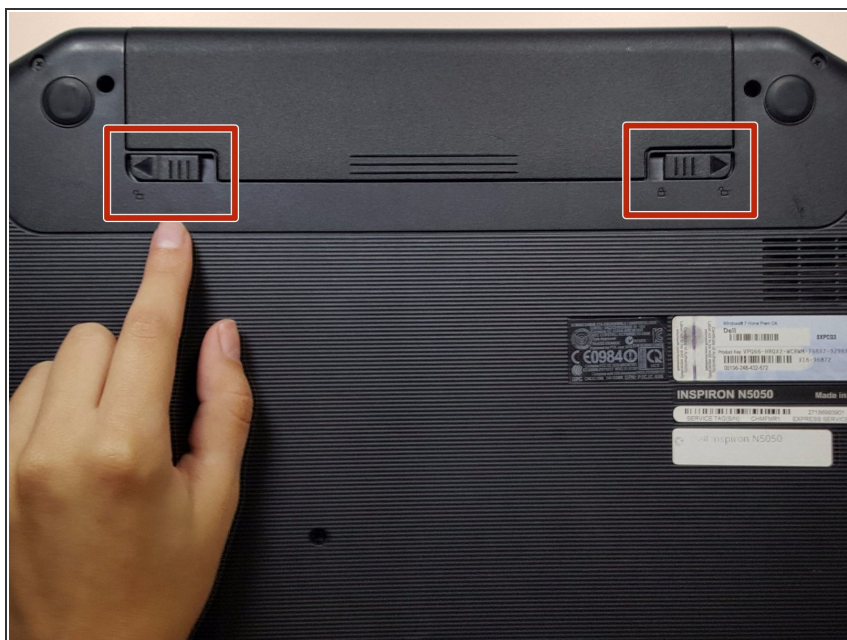
- [Phillips #00 Screwdriver](#) (1)
- [iFixit Opening Tool](#) (1)



PARTS:

- [Crucial MX500 1 TB SSD](#) (1)
- [Crucial MX500 250 GB SSD](#) (1)
- [Crucial MX500 500 GB SSD](#) (1)
- [Crucial MX500 2 TB SSD](#) (1)

Step 1 — Battery



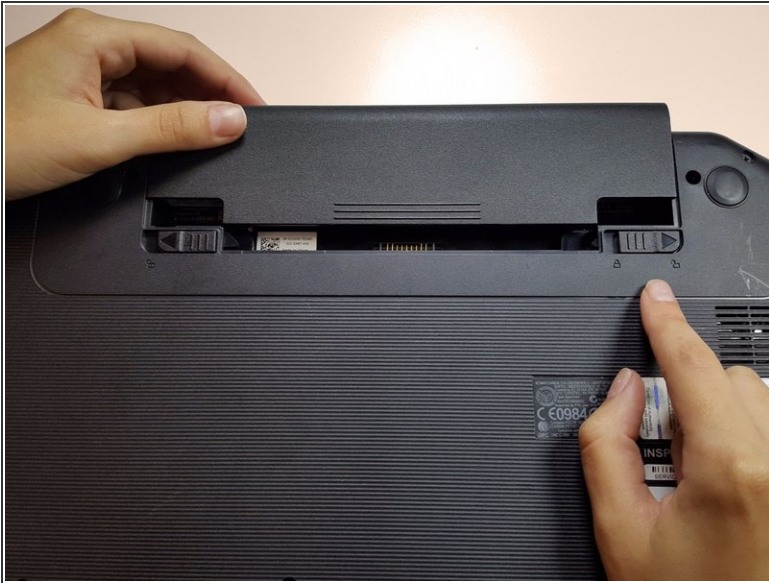
- Flip your laptop over to view the bottom and the two locks.

Step 2



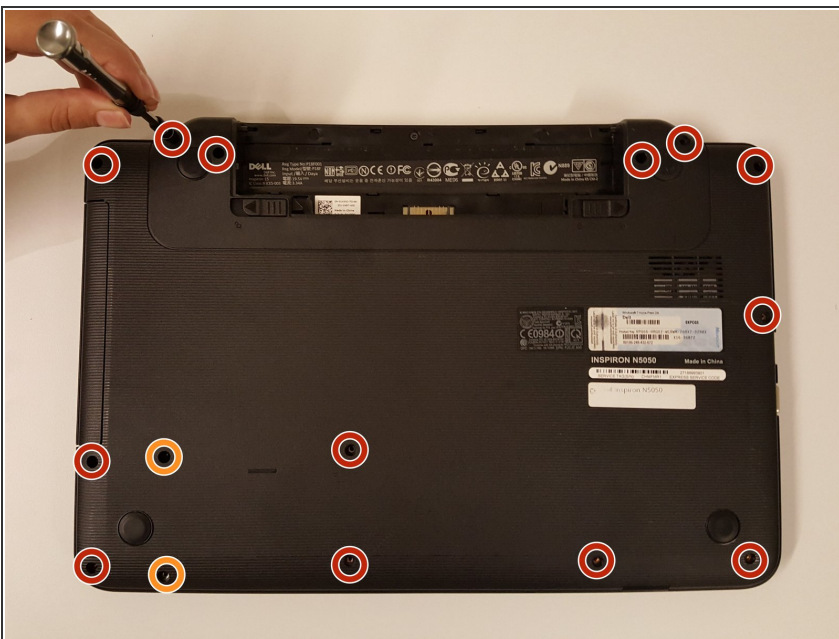
- Slide the two locks away from each other.
- ⓘ Sliding these locks will loosen the battery to allow removal.

Step 3



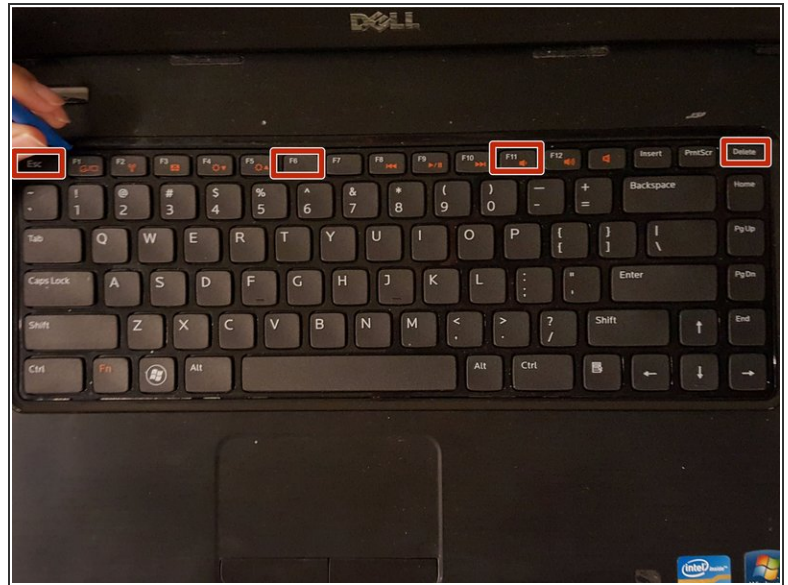
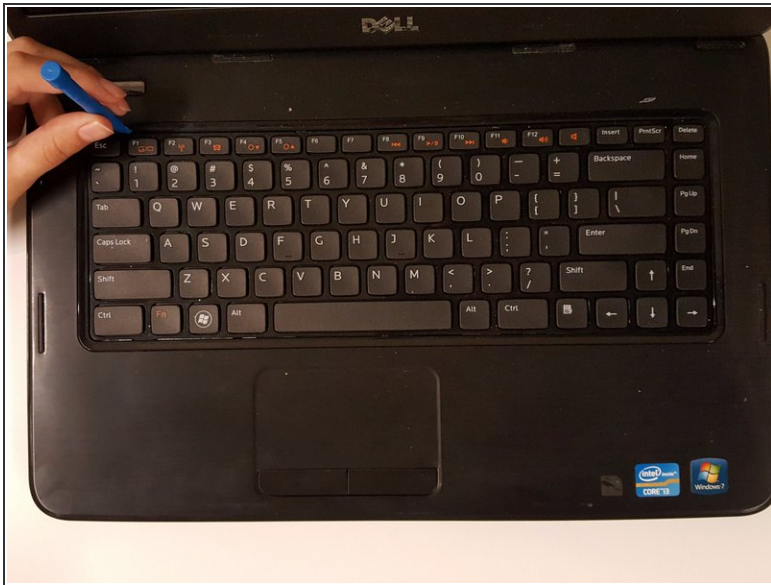
- Pull the battery out of the laptop.
- ❗ Your laptop's battery should be completely removed.

Step 4 — Hard Drive



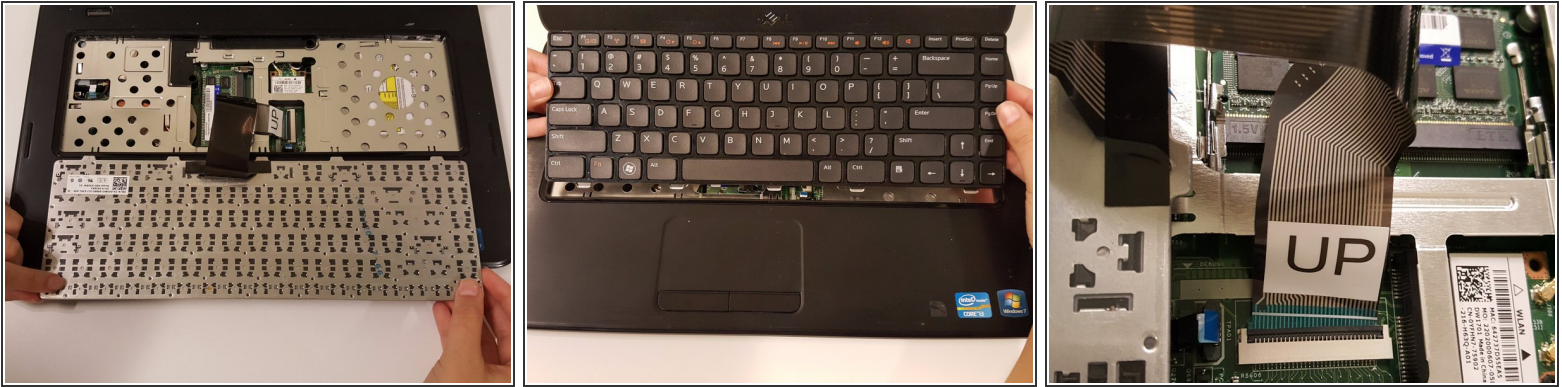
- Remove the eleven 5mm palmrest screws from the bottom of the laptop with a Phillips #PH00 screw.
- Remove the two 3mm hard drive screws from the bottom of the laptop with a Phillips #PH00 screw.

Step 5



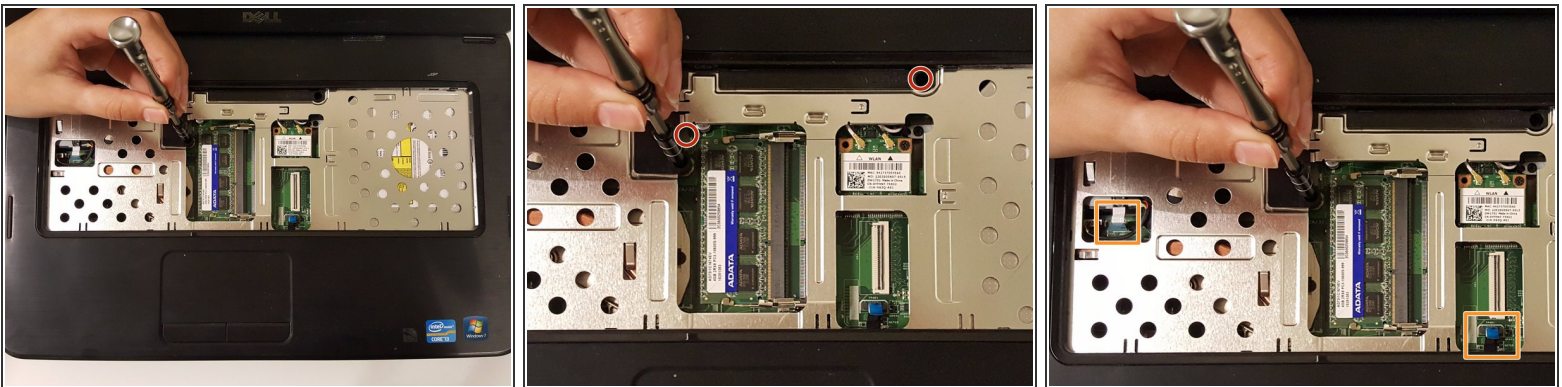
- Flip over and open the laptop to view the keyboard.
 - Use a plastic opening tool to press down on four clips, one by one.
 - Press down on the clips and pull the tool towards you to pry the keyboard loose.
- ⓘ The four clips are above the Esc, F6, F11, and Delete keys.

Step 6



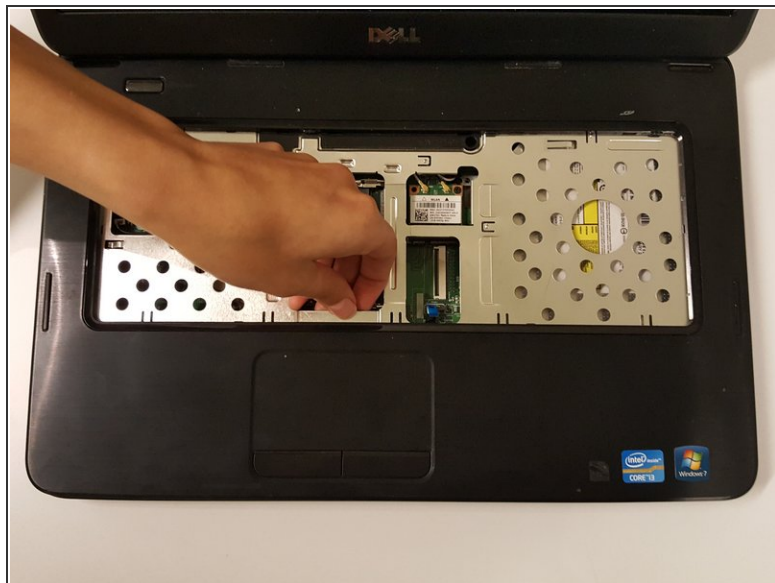
- Remove the keyboard carefully.
⚠ Make sure to lift the keyboard gently, because a cable is connected to the back.
- Flip the keyboard over to find the keyboard cable.
- Pull the cable labeled "UP" out to disconnect it from the laptop.

Step 7



- Unscrew the two palmrest screws.
- Lift the two, blue palmrest cables up and out of their sockets.

Step 8



- Lift the entire surface (palmrest casing) to expose the motherboard underneath.

Step 9



- Slide the hard drive right and up to remove it from the laptop.

To reassemble your device, follow these instructions in reverse order.