



Disassembling Microtek ScanMaker 5900 Motor Tread

This guide will show you how to replace a motor...

Written By: Steven Shaginyan



INTRODUCTION

This guide will show you how to replace a motor tread.

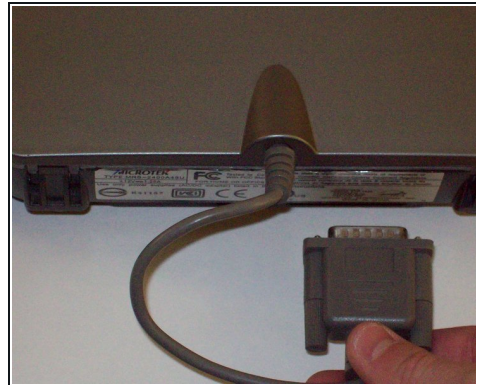
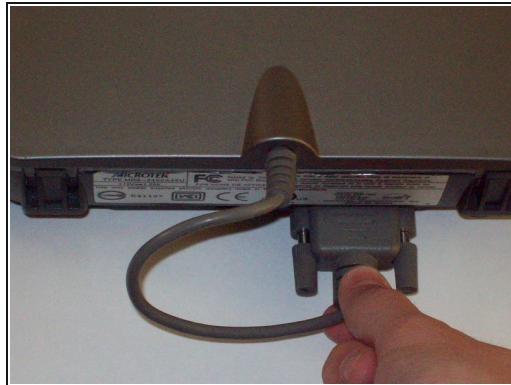
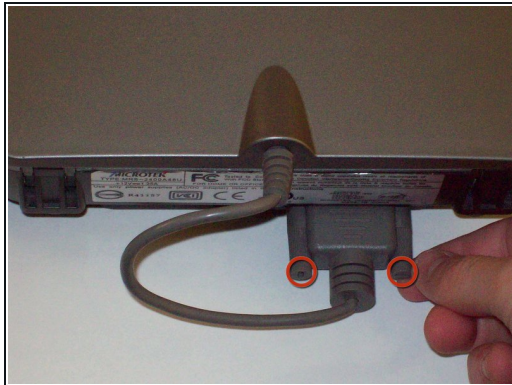
TOOLS:

[Tweezers](#) (1)

[Phillips #2 Screwdriver](#) (1)

[iFixit Opening Tool](#) (1)

Step 1 — Remove serial port connection



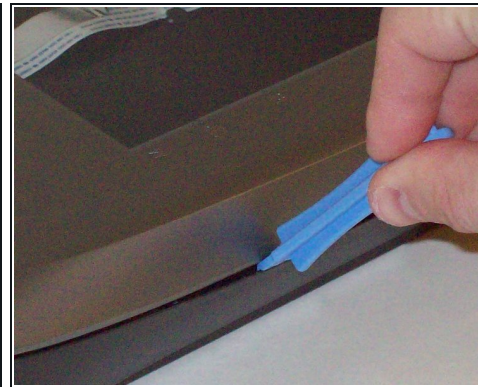
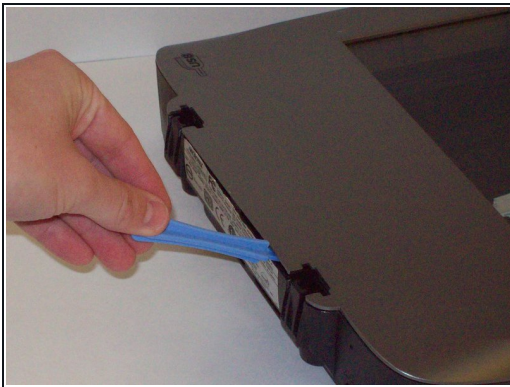
- Loosen the screws on the serial port by turning them counter clockwise by hand.
- After loosening the screws, pull the serial port out.

Step 2 — Remove Lid



- Lift lid to its vertical position.
- Pull lid straight up to remove it from the scanner.

Step 3 — Detach plastic latches



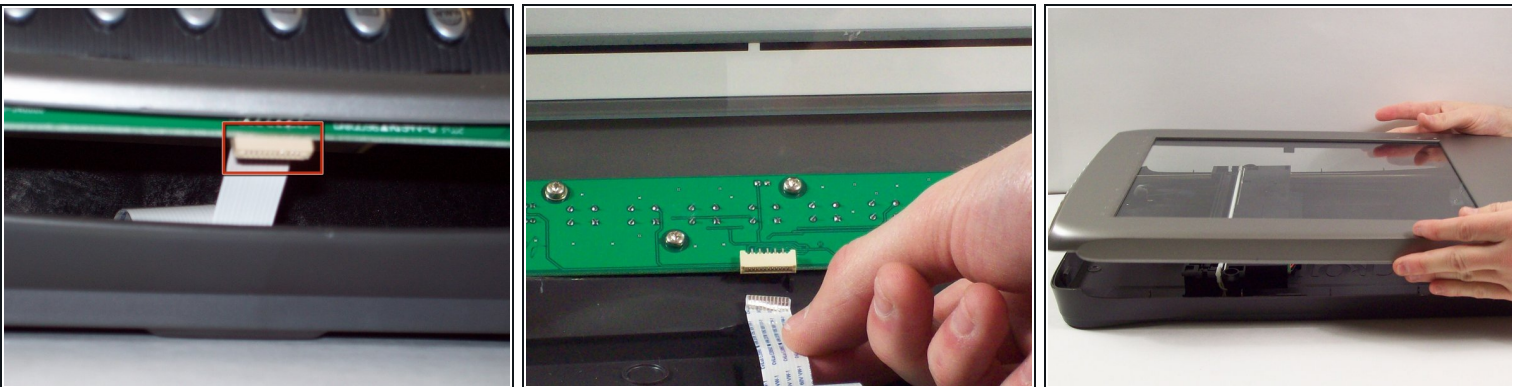
- Push the plastic opening tools into the crack between the top and the bottom of the chassis.

Step 4 — Continue latch detachment



- After placing one plastic opening tool into the slit, slide other plastic opening tools along the slit to detach the top from the bottom of the chassis.
- Go all the way along the chassis until you can lift the upper lid.

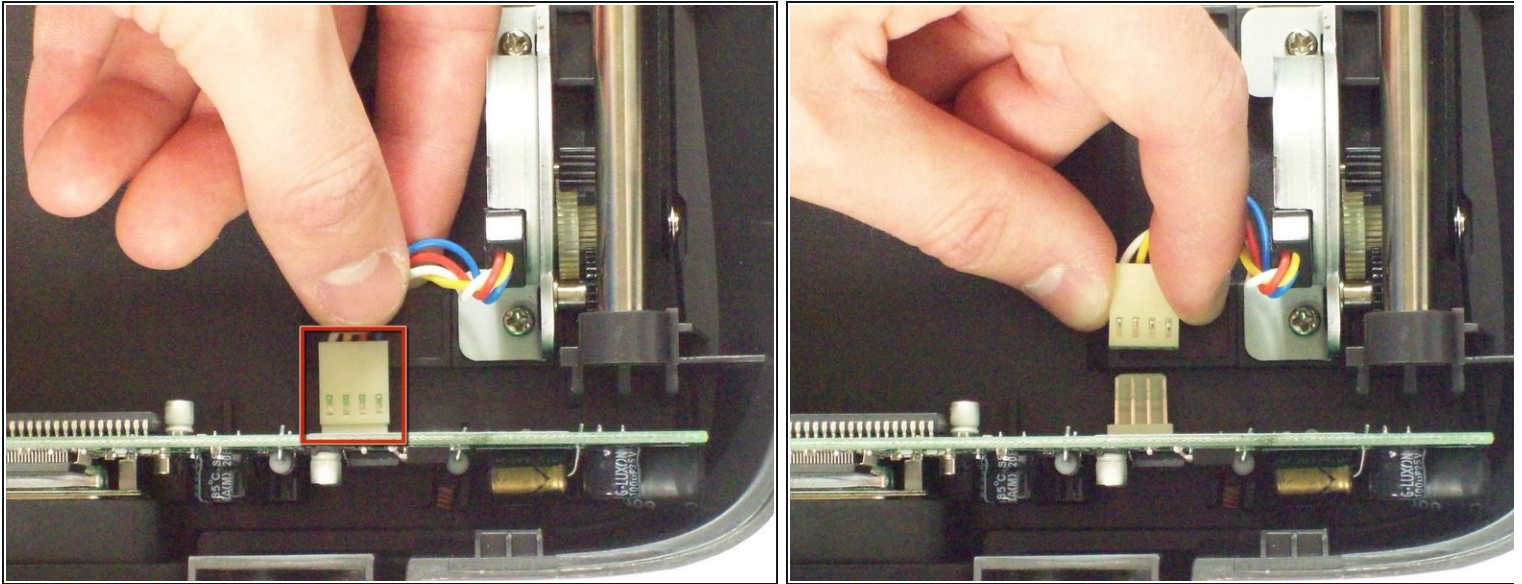
Step 5 — Fully remove the upper lid



⚠ Do not fully remove the lid until you remove the ribbon cable attached to the front of the upper lid.

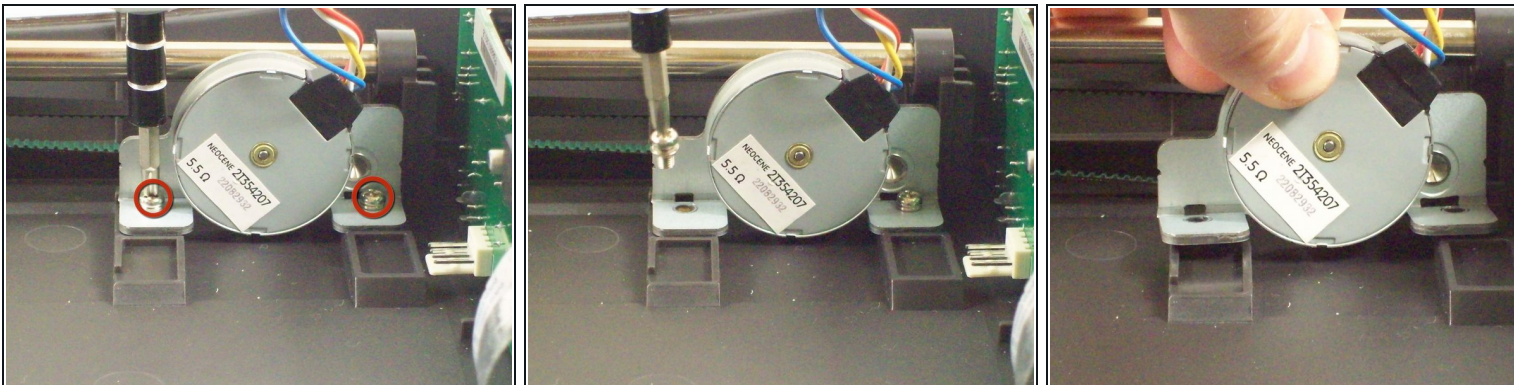
- Do this by grabbing the upper lid from the sides and rotating it ninety degrees so it is perpendicular to the bottom lid.
- Grab the ribbon cable and gently pull it out of its slot with your fingers.
- The upper lid can now safely be removed from the bottom lid.

Step 6 — Stepper Motor



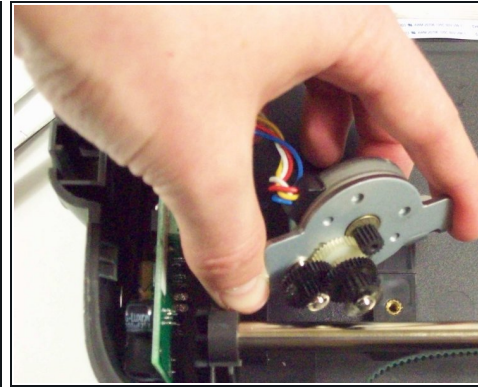
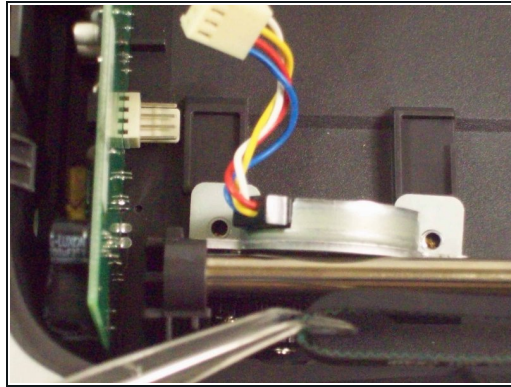
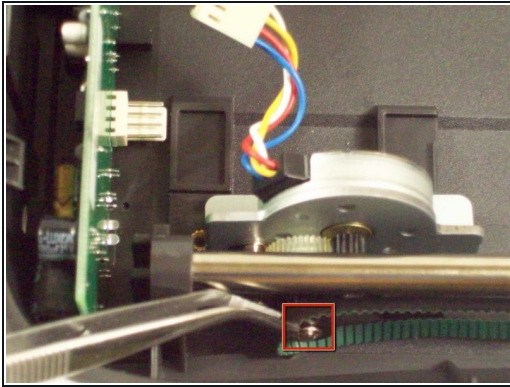
- Locate the stepper motor. With the front of the scanner facing you, the motor is located at the top left.
- Disconnect the white connector from the vertical standing circuit board.

Step 7



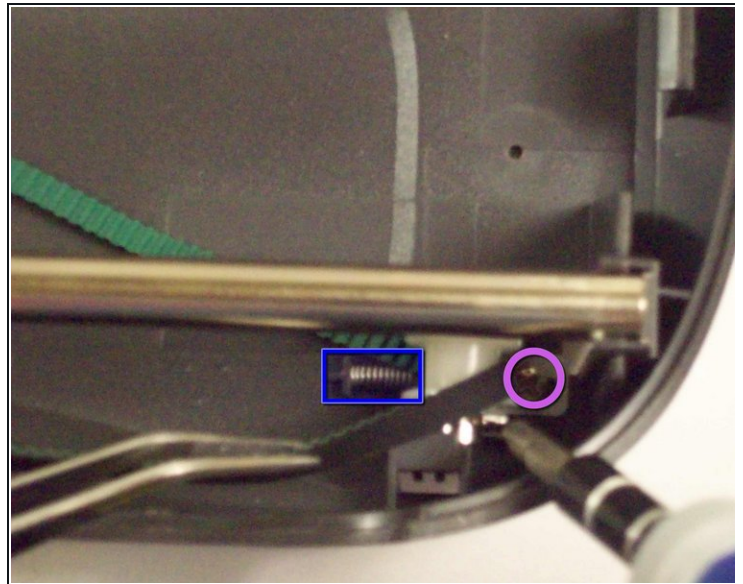
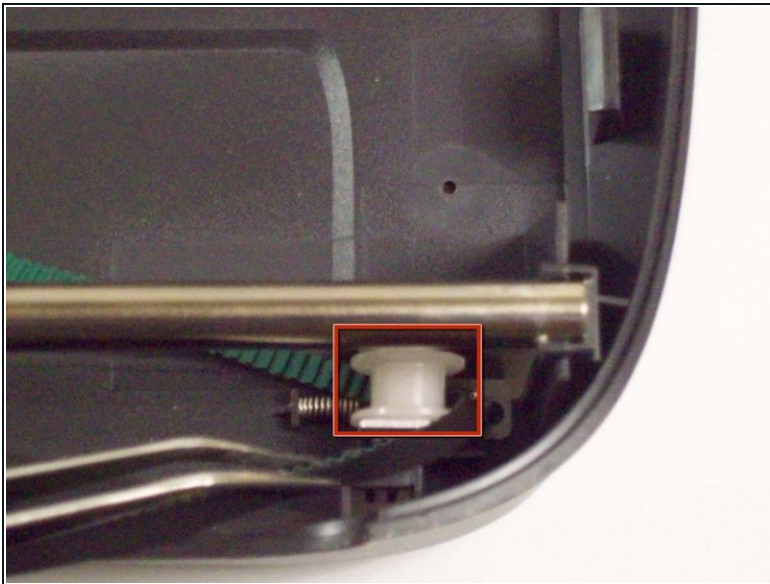
- Using a #2 Philips Screwdriver, unscrew the two 7.7mm screws holding the stepper motor in place.
- The stepper motor will become loose, but not completely free.

Step 8



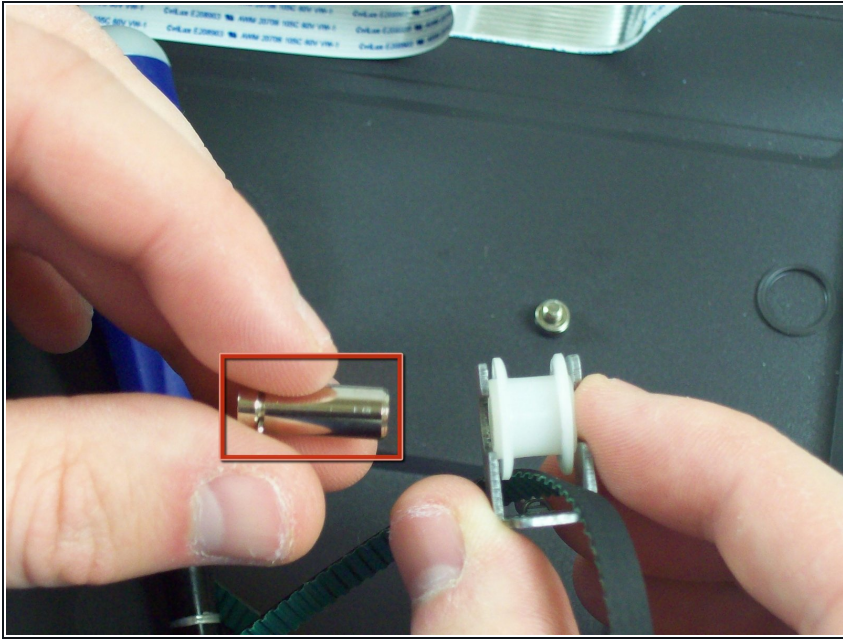
- Using tweezers gently remove the tread from the black gear on the stepper motor.
- The stepper motor will become completely free.

Step 9 — Motor Tread



- Facing the front of the scanner you will see a white plastic wheel holding the other end of the tread.
- Pull the spring towards you until it snaps off the side wall releasing the tension in the spring.
- Using a #2 Philips Screwdriver, unscrew the single 5.88mm screw holding the mount of the plastic wheel in place.

Step 10



- The plastic wheel and its mount will be loose.
- Remove the shaft holding the plastic wheel and the mount together
- The tread will be completely loose.

To reassemble your device, follow these instructions in reverse order.