



# HP Slate 7 Extreme 4400US Rear-Facing Camera Replacement

This guide will present the steps needed to replace the rear-facing camera on the HP Slate 7 Extreme 4400US tablet.

Written By: Riley Wells



---

## INTRODUCTION

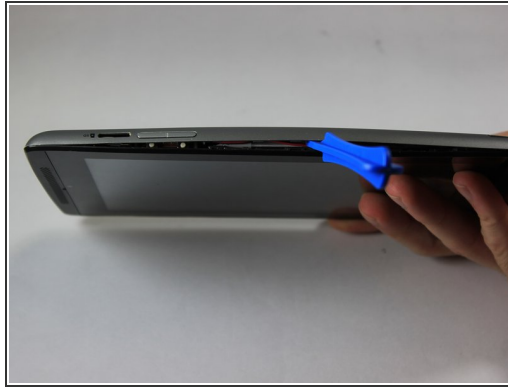
For this guide, you will need the following tools: plastic opening tool, spudger, PH 000 screw bit.

---

### TOOLS:

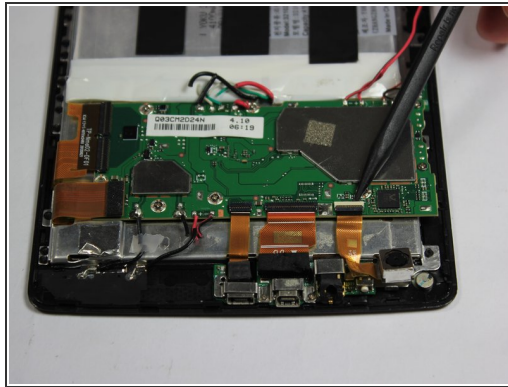
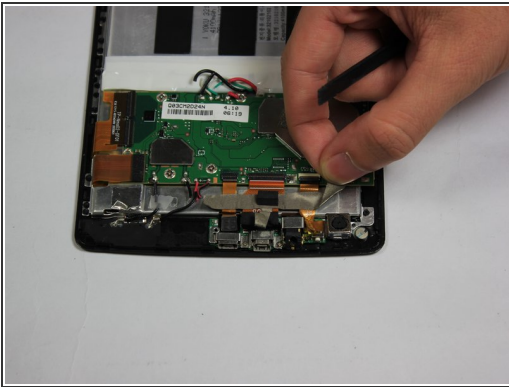
- [iFixit Opening Tools](#) (1)
  - [Phillips #000 Screwdriver](#) (1)
  - [Spudger](#) (1)
-

## Step 1 — Back Cover



- Use the plastic opening tool to separate the back cover from the tablet. Carefully use the tool to pry open the sides, going around the entire tablet to lift the sides up.
- Once all sides have been pried up, pull the cover off and place it to the side.

## Step 2 — Rear-Facing Camera



- Pull back the tape holding the the camera's connector strip to the device.
- Use the nylon spudger to flip up the black retaining flap of the zero insertion force (ZIF) connector holding the strip in place.
- Gently pull the camera's connecting strip out from the port.

To reassemble your device, follow these instructions in reverse order.