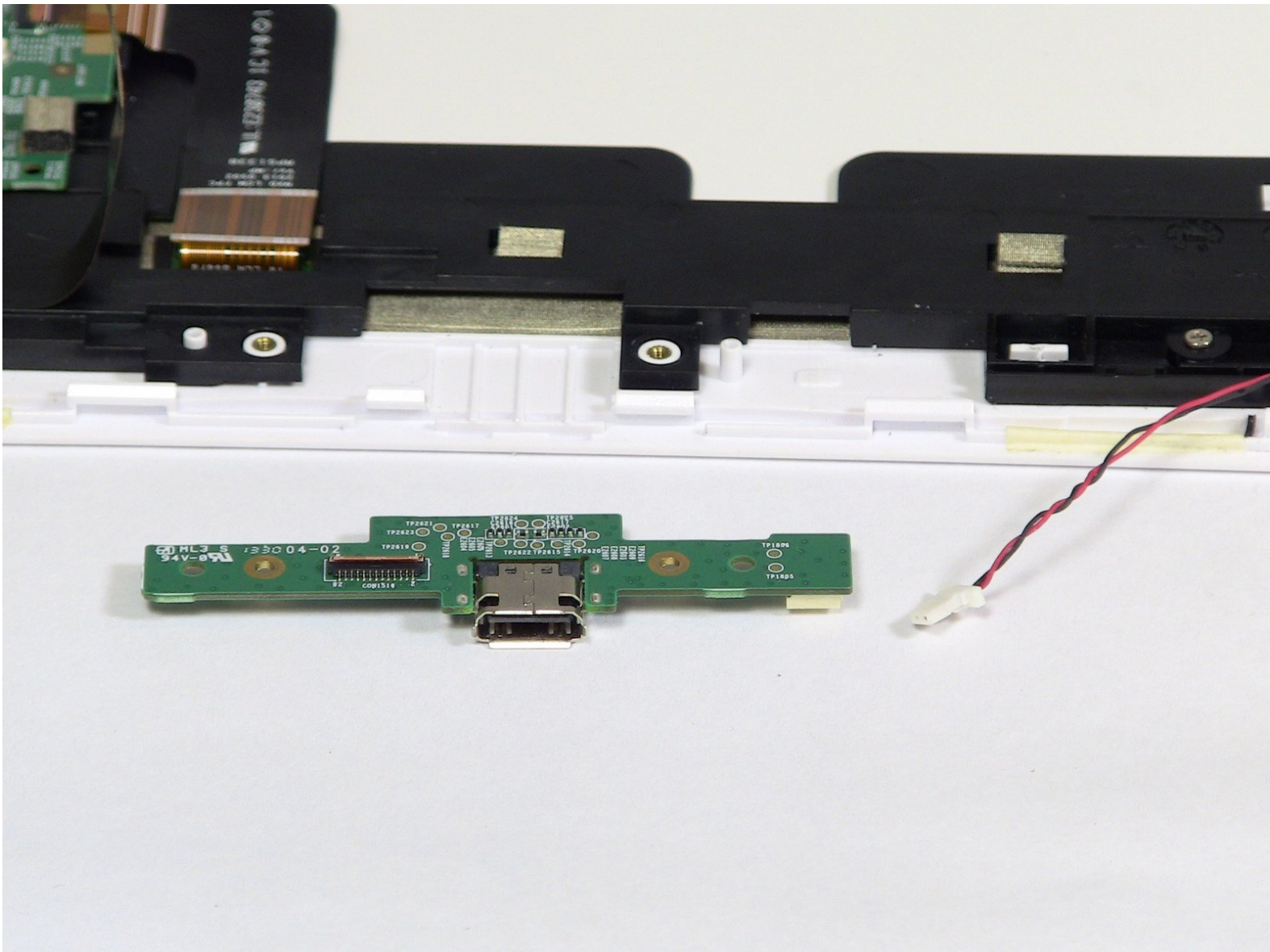




# NABI XD Charging port Replacement

This guide is for replacing the charging port on the NABI XD.

Written By: Marissa Schiereck



---

## INTRODUCTION

Is your charging port damaged, can't charge your device no matter what you have tried. Replacing the charging port may fix those problems.

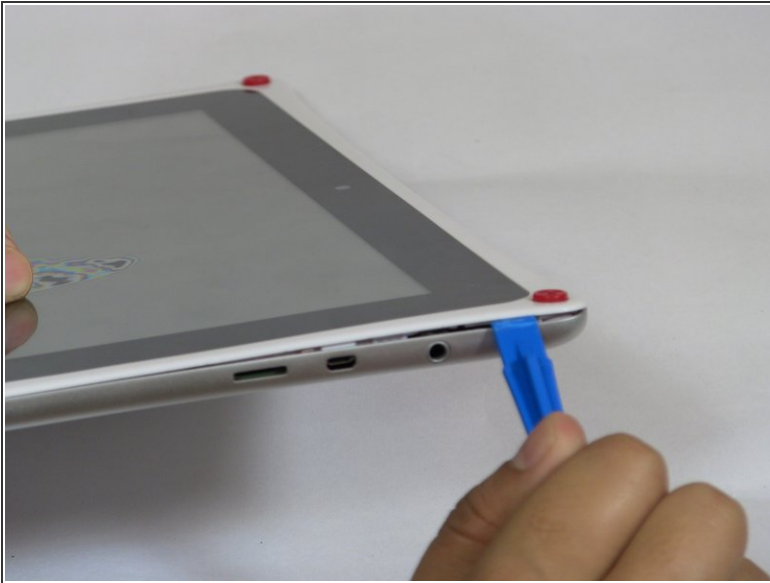
---



### TOOLS:

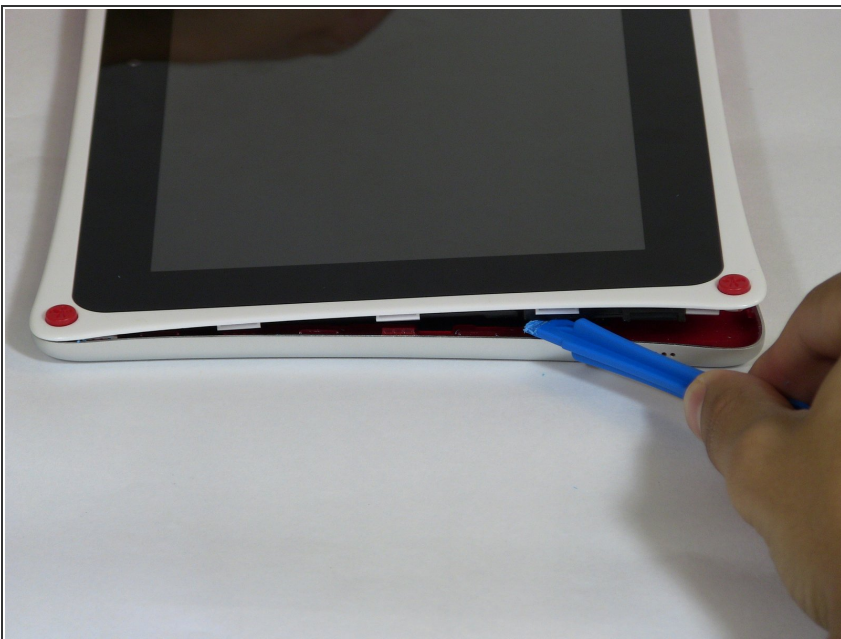
- [iFixit Opening Tools](#) (1)
  - [Phillips #0 Screwdriver](#) (1)
-

## Step 1 — Rear panel



- Use the plastic opening tool at the top left corner seam, then pry the corner apart.

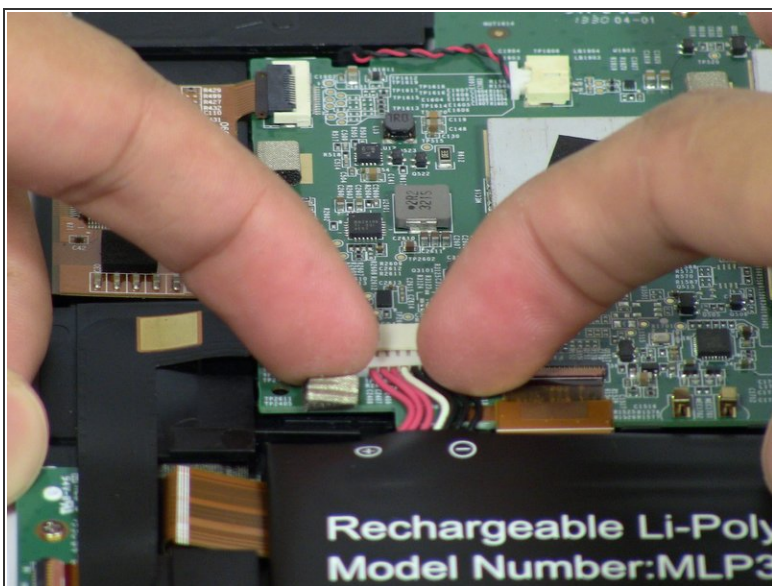
## Step 2



- Next slide the plastic opening tool across the sides of the Nabi. It will slowly open.
- There are small plastic clips that need to be release. Gently apply outwards pressure until the clips give.
- Go around the NABI XD and separate the rear panel from the device.



## Step 3 — Battery



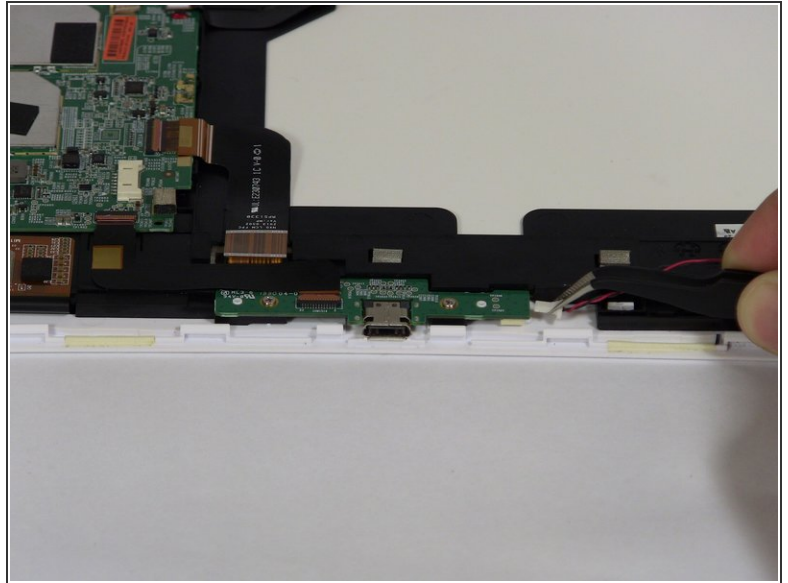
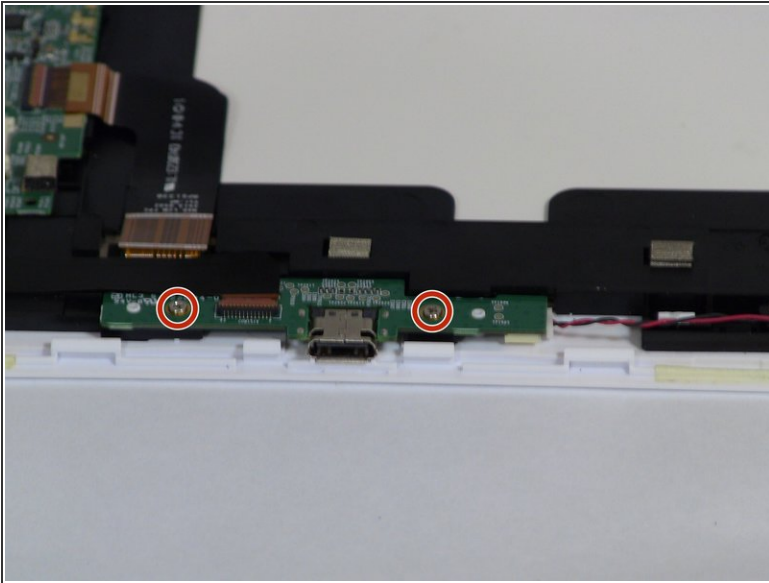
- Place your fingernails on both sides of the connector and pull it straight back away from the holder.

## Step 4



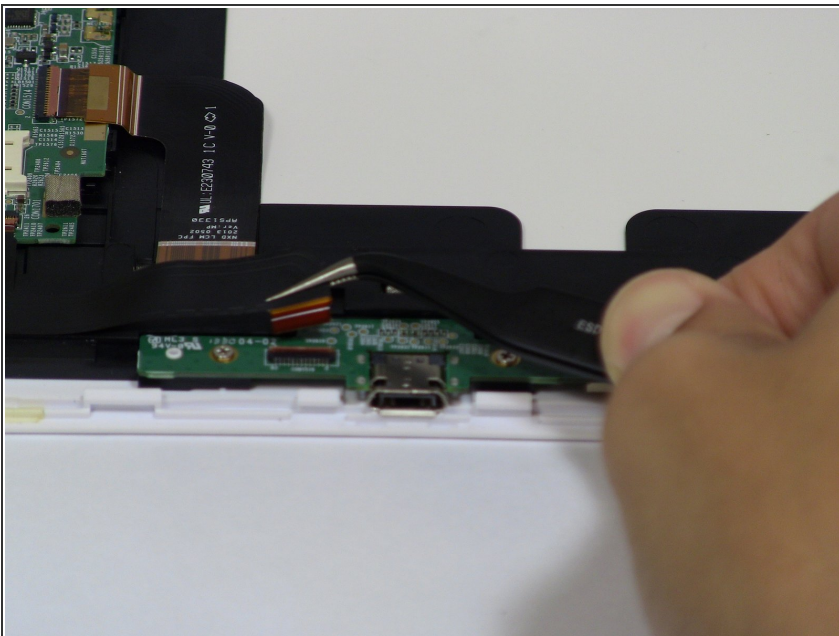
- ❗ Battery is glued to the base, lift carefully.
- To remove battery, lift the battery up from the motherboard.

## Step 5 — Charging port



- Remove the two 4mm Phillips screws with the PH#0 screwdriver.
- Disconnect the left (L) speaker wire from the charging port by grabbing it on both sides with the tweezers and pulling straight back.

## Step 6



- Use your fingernails or a spudger to flip up the small retaining flap, then pull the ribbon straight back to remove
- Lift the charging port from the NABI XD.

To reassemble your device, follow these instructions in reverse order.