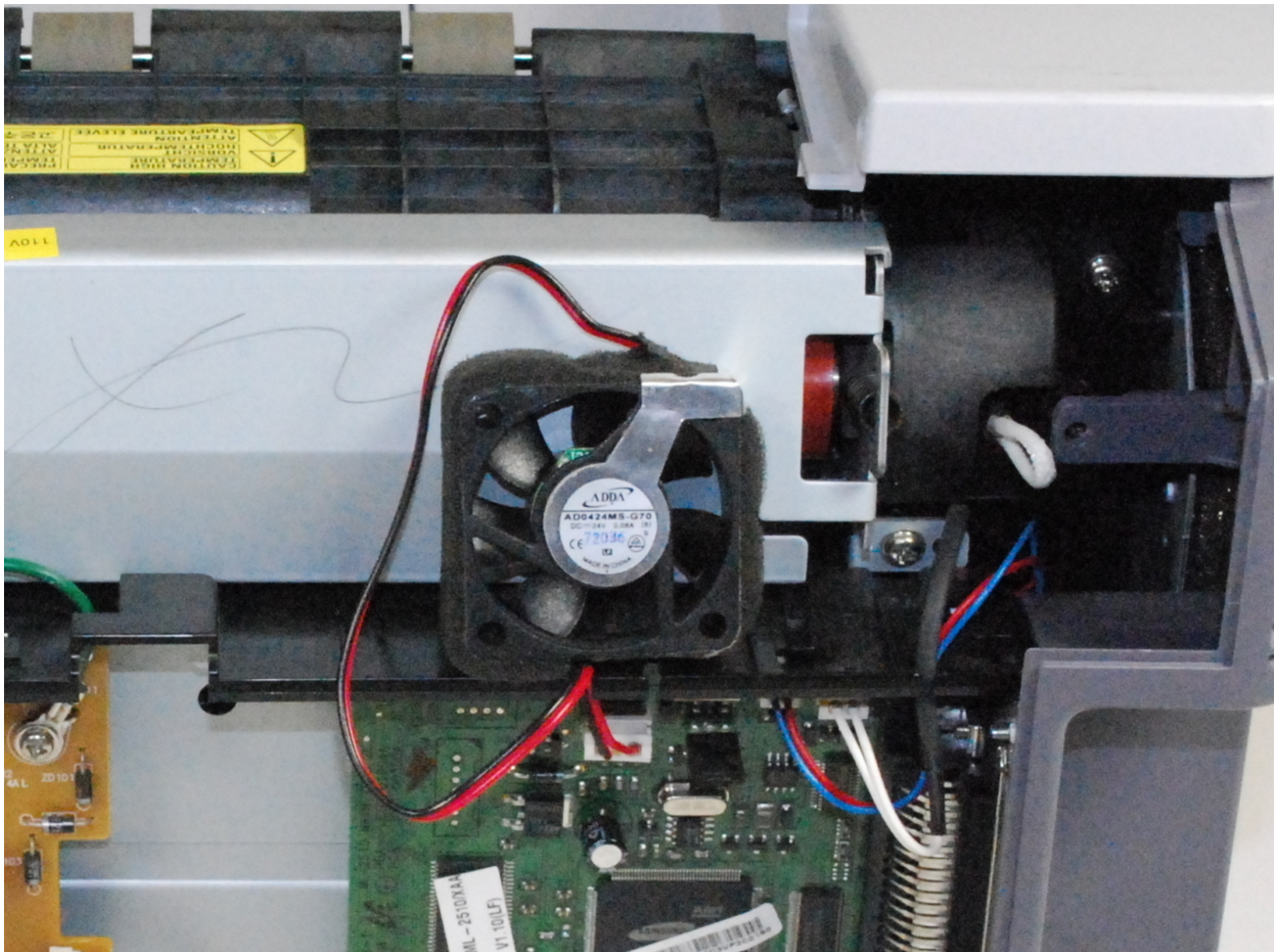




Samsung ML2510 Rear Cooling Fan Replacement

This guide will demonstrate the procedure to replace the rear cooling fan on the Samsung ML2510

Written By: bbaustin



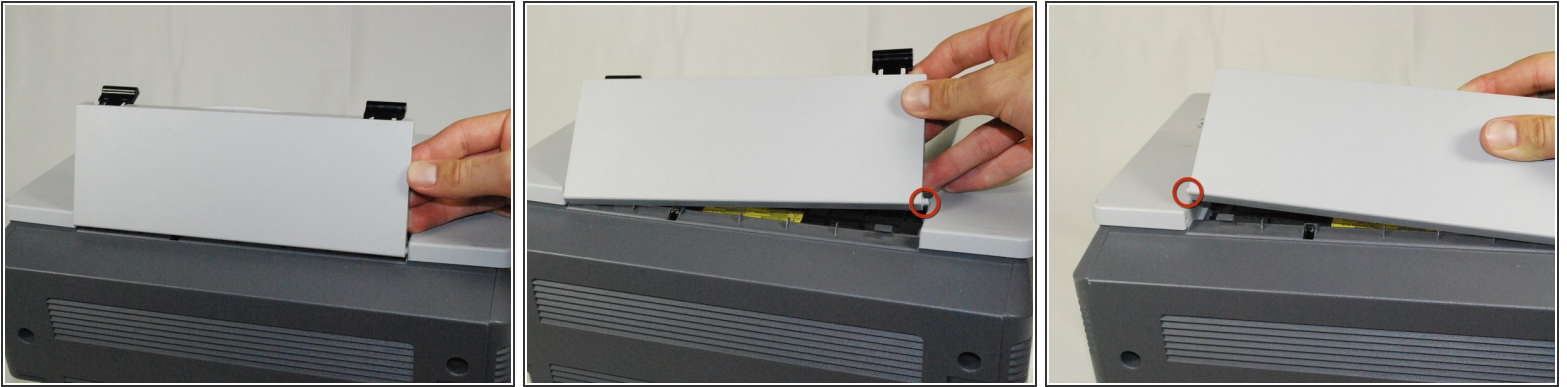
INTRODUCTION

This guide will go over where to locate and replace the rear cooling fan if your fan no longer functions properly. You will need to reference the [Removing Samsung ML2510 Back Panel](#) repair guide to complete this one.

TOOLS:

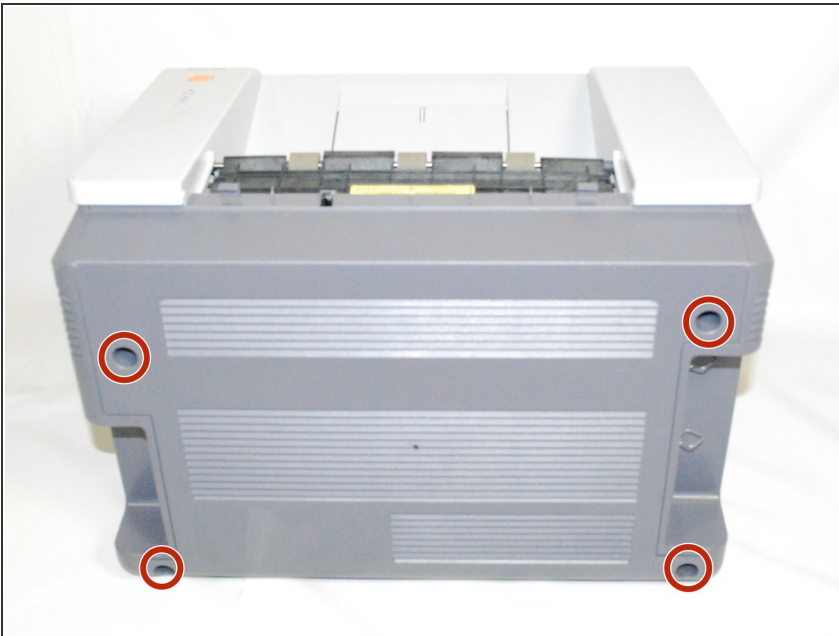
- [Phillips #1 Screwdriver](#) (1)
-

Step 1 — Removing Samsung ML2510 Back Panel



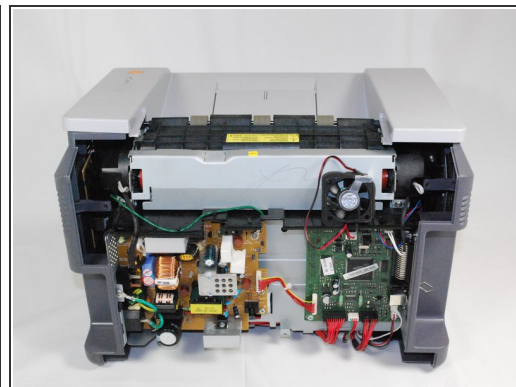
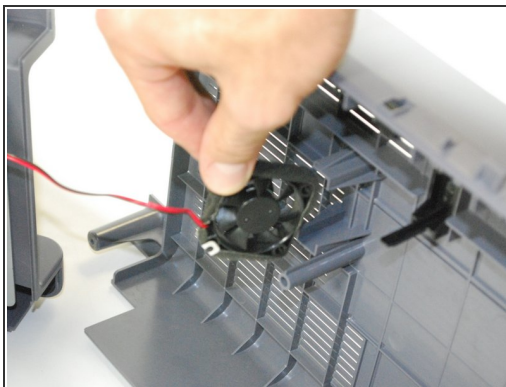
- Remove the top hinged panel by taking out the pins at the bottom of this panel.

Step 2



- Using a Phillips #2 screwdriver, remove the four screws on the back of the printer.

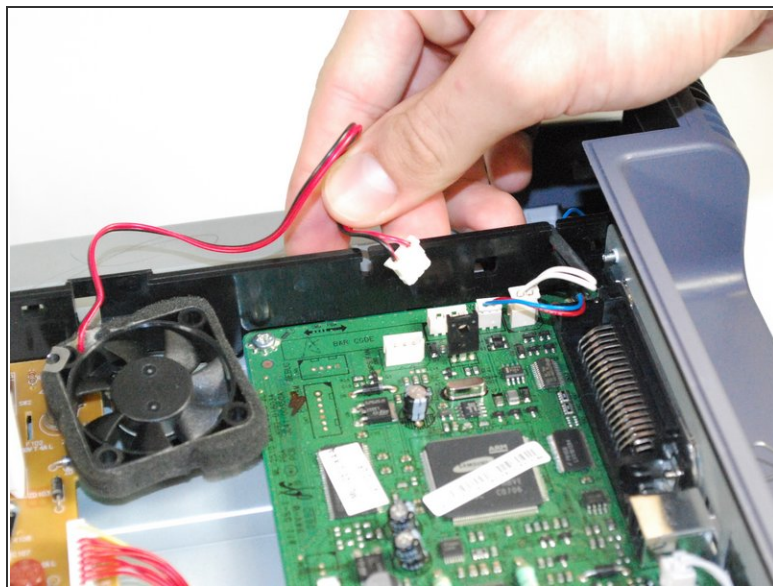
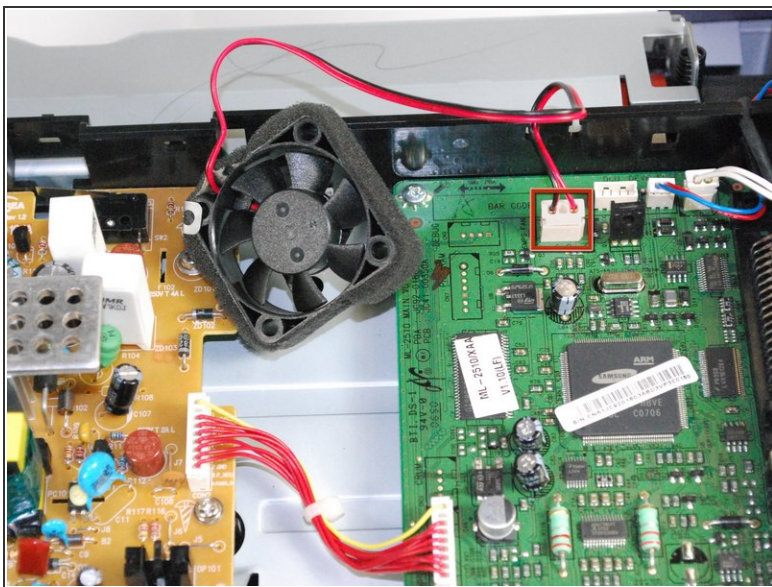
Step 3



- Gently lift the top panel while simultaneously pulling off the back panel.

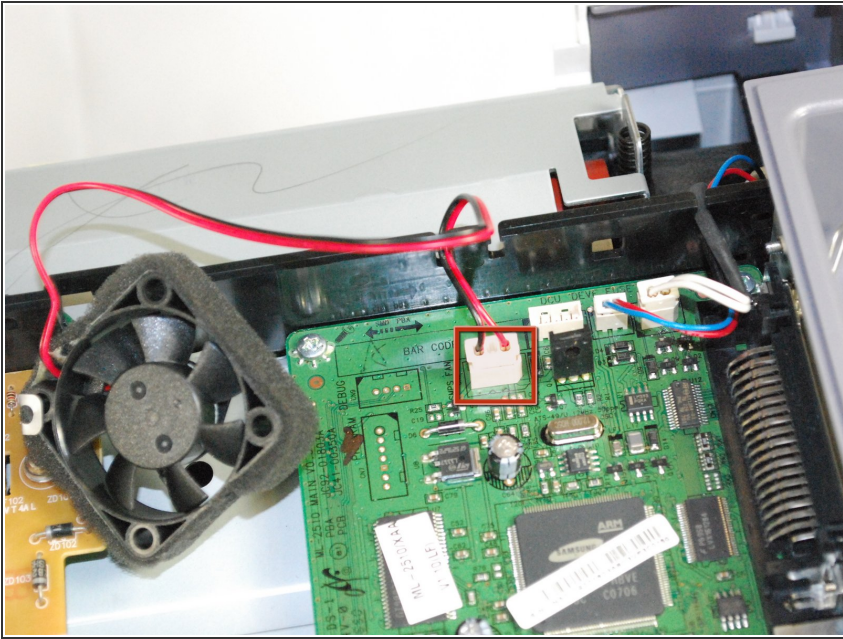
⚠ Before pulling out the back panel entirely, make sure to remove the rear cooling fan from its slot.

Step 4 — Rear Cooling Fan



- Once the fan is detached, unplug the fan from the circuit board.
- Slide the fan's wiring through the anchored slit.

Step 5



- With the new fan, thread the wiring through the old fan's slit.
- Reconnect the fan by plugging it back into the circuit board.
- Reattach the back panel following these instructions in reverse order.