



why! W670SZQ1 Replacing the LCD screen

Written By: Felice Suglia

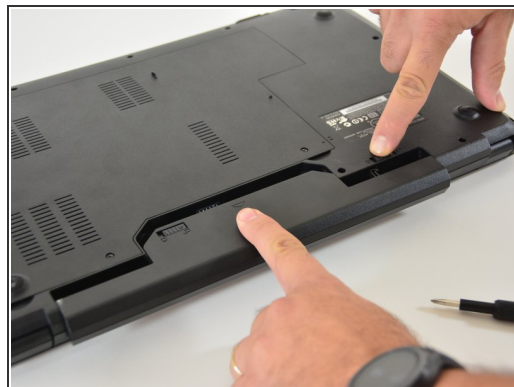
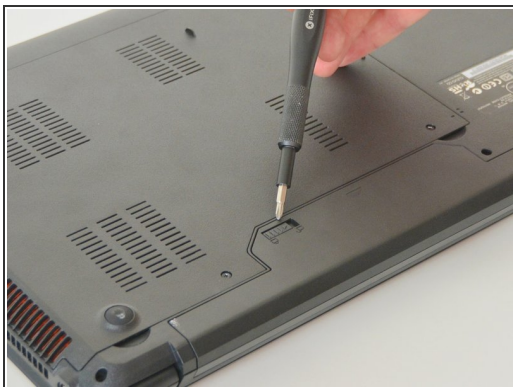




PARTS:

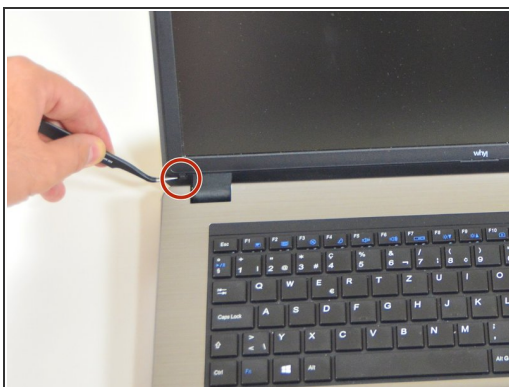
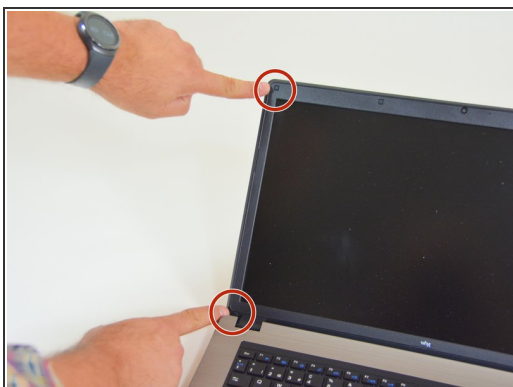
- [New Item](#) (1)
 - [New Item](#) (1)
-

Step 1 — The Batteries



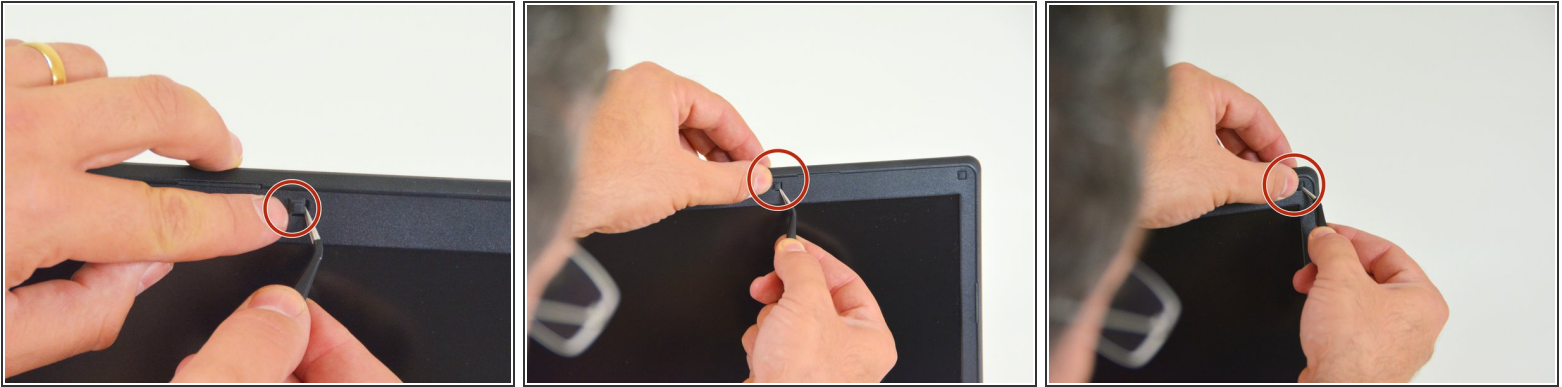
- Unlock the lock latch on the left.
- Unlock the lock latch on the right.
- Remove the battery while holding the lock latch unlocked.

Step 2 — LCD screen



- Start by locating the two screw caps on the left side of the screen.
- Remove the lower screw cover.
- Then the top screw cover.

Step 3



- Locate and then remove the first center screw on the top of the screen frame.
- Then the second central cap on the top of the screen frame.
- Then locate and remove the screw cap on the upper right side of the screen frame.

Step 4



- Then finally the bottom right screw cap of the screen frame.
- Then unscrew the screws behind the screw caps, starting with the one at the bottom left of the frame.
- Then at the top left.

Step 5



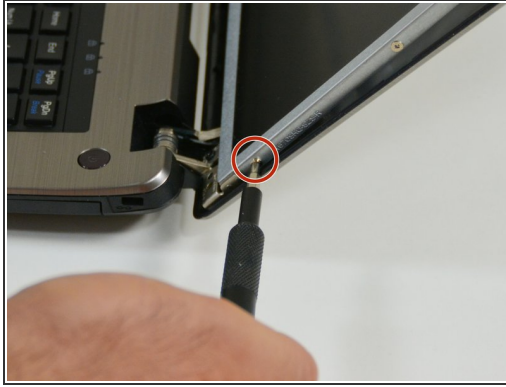
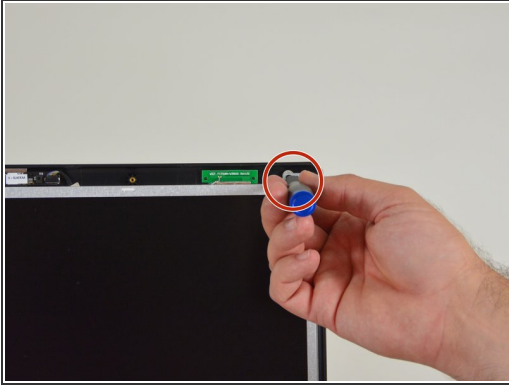
- Then the first central screw on the top edge of the frame.
- Then the second central screw on the top edge of the frame.
- Then the one in the upper right corner of the frame.

Step 6



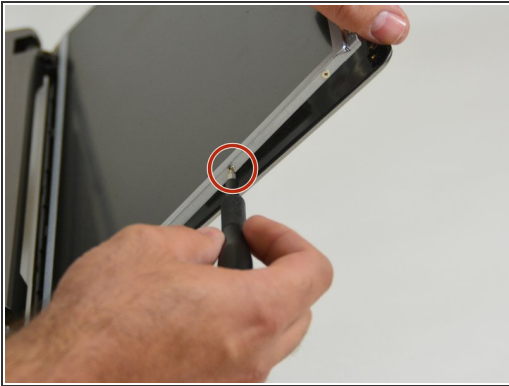
- And finally the one on the lower right side of the frame.
- Then gently use your nails.
- To remove the frame from the LCD screen.

Step 7



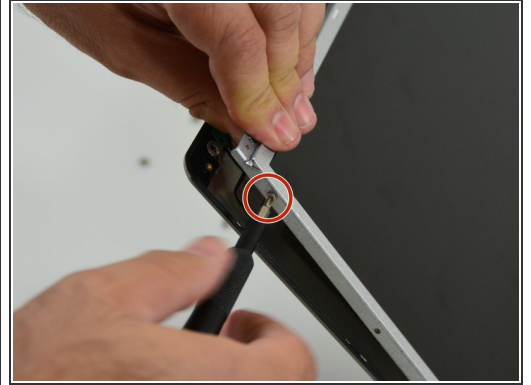
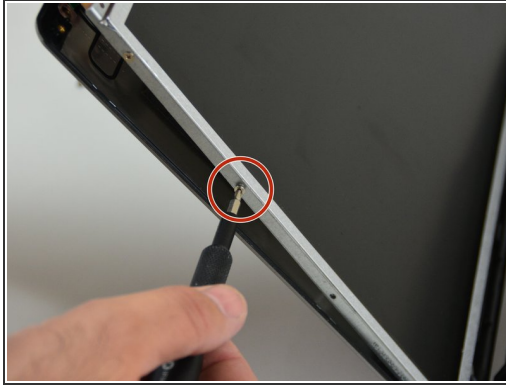
- Unscrew the screws on the front of the LCD screen.
- Next, unscrew the screws on the right side of the LCD screen, starting with the first one.
- Then the second.

Step 8



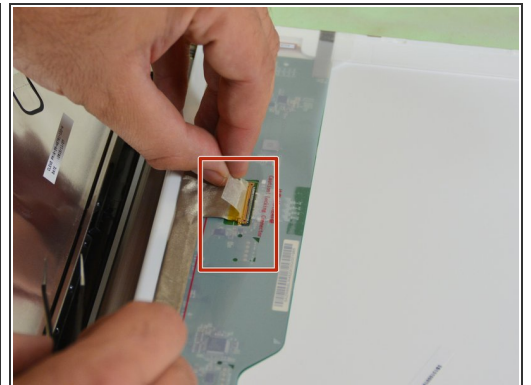
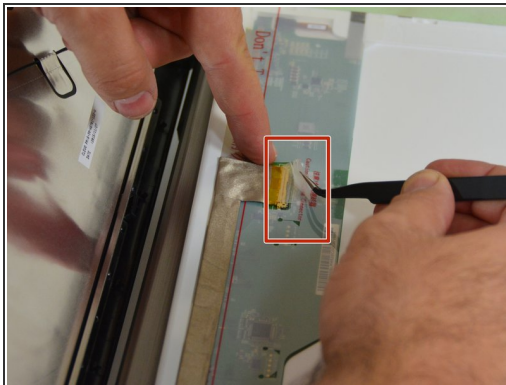
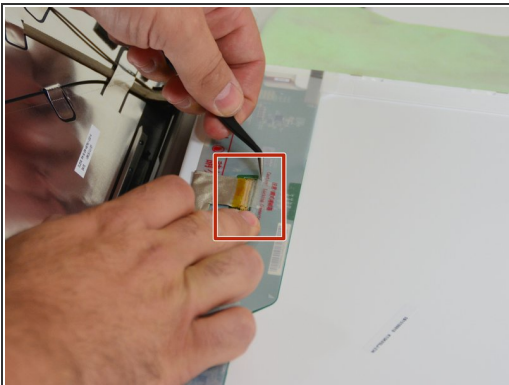
- Then the third.
- And finally the fourth.
- Repeat these operations then on the left side of the screen starting with the first screw.

Step 9



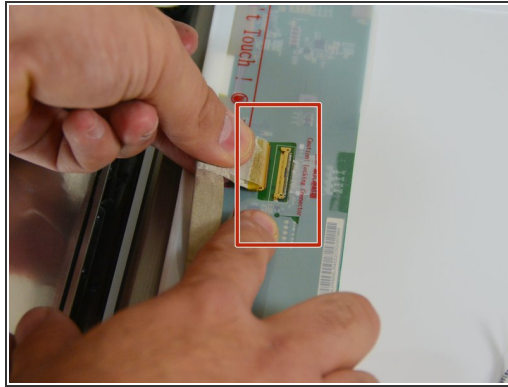
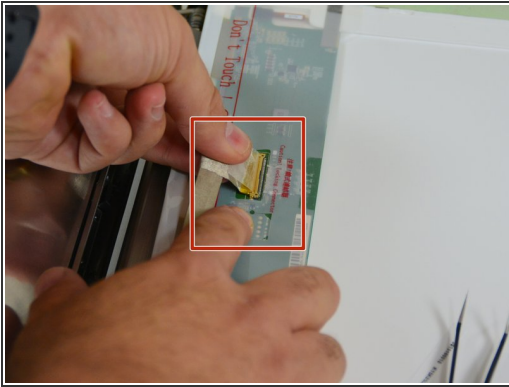
- Then the second.
- Then the third. .
- And finally the fourth

Step 10



- Then flip the LCD screen.
- Then appears the connector to which is attached the connection cable of the LCD.
- Then peel off the tape covering the connector.

Step 11



- then remove the cable from its connector.
- Once the cable is disconnected you can release the LCD screen.

to reassemble your device follow these instructions in reverse order.