



# why! W670SZQ1 Fan Replacement

Written By: Felice Suglia





## PARTS:

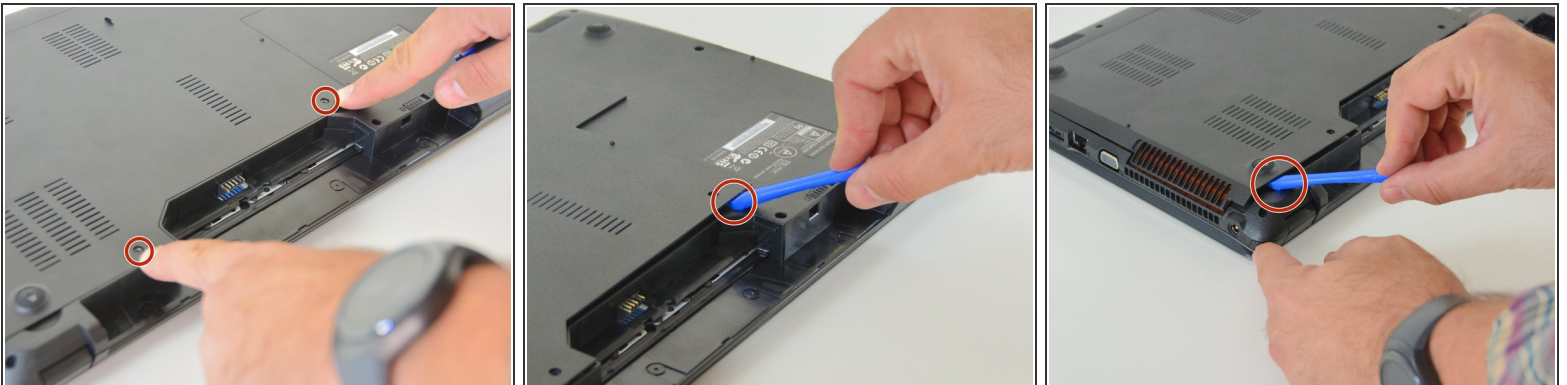
- [New Item](#) (1)
  - [New Item](#) (1)
-

## Step 1 — The Batteries



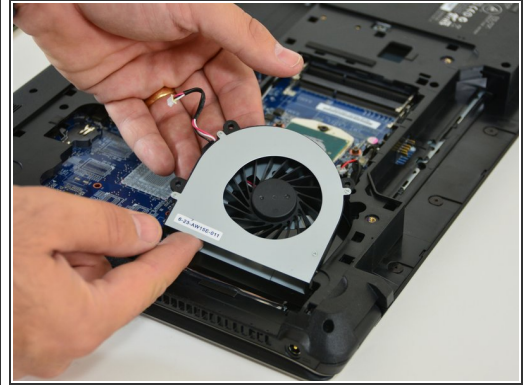
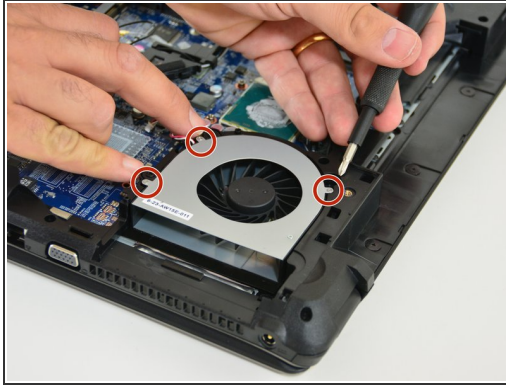
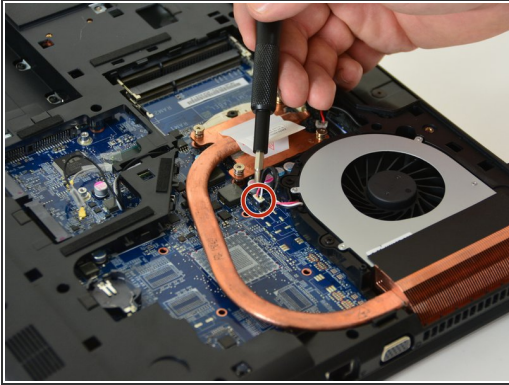
- Unlock the lock latch on the left.
- Unlock the lock latch on the right.
- Remove the battery while holding the lock latch unlocked.

## Step 2 — Access to Major Components



- Using the Philips # 0 screwdriver, unscrew the 2 screws from the bottom cover.
- Lift the bottom right cover with the iFixit Opening Tool.
- Lift the lower left cover with the iFixit Opening Tool.
- Finally clear the bottom cover completely to access the main components.

## Step 3 — The fan



- Start by disconnecting the power cable from the fan.
- Then unscrew the three screws holding the fan in place.
- Finally, disengage the fan from its location by lifting it up.

To reassemble your device follow these instructions in reverse order.