



why! W670SZQ1 Remplacement Carte WLAN / Bluetooth

Written By: Felice Suglia



**TOOLS:**

- [Phillips #0 Screwdriver](#) (1)

**PARTS:**

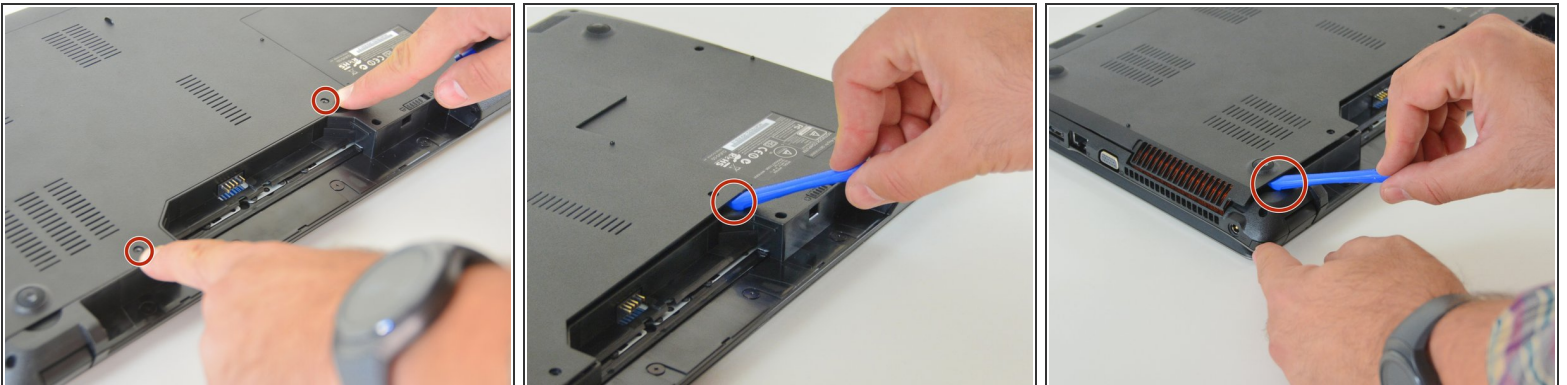
- [New Item](#) (1)
- [New Item](#) (1)

Step 1 — The Batteries



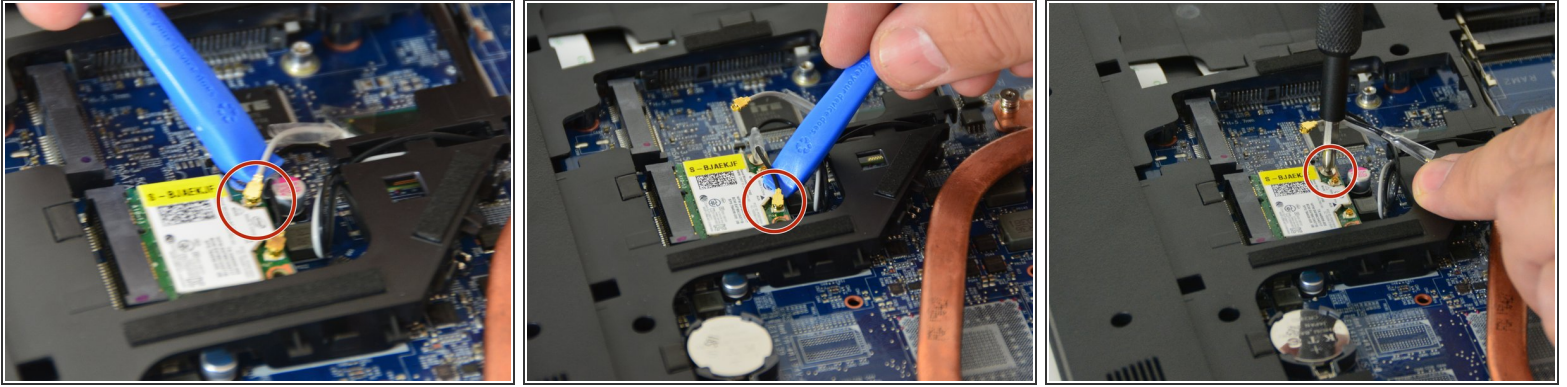
- Unlock the lock latch on the left.
- Unlock the lock latch on the right.
- Remove the battery while holding the lock latch unlocked.

Step 2 — Access to Major Components



- Using the Philips # 0 screwdriver, unscrew the 2 screws from the bottom cover.
- Lift the bottom right cover with the iFixit Opening Tool.
- Lift the lower left cover with the iFixit Opening Tool.
- Finally clear the bottom cover completely to access the main components.

Step 3 — Carte WLAN / Bluetooth



- First disconnect one of the antenna connectors.
- Then the other connector.
- Unscrew the fixing screw with the Philips # 0 screwdriver. Then slightly lift the chipset and remove it from the mSATA connector.

TO REASSEMBLE YOUR DEVICE FOLLOW THE FOLLOWING INSTRUCTIONS IN REVERSE ORDER.