



why! N240JU Keyboard Replacement

Written By: Felice Suglia





TOOLS:

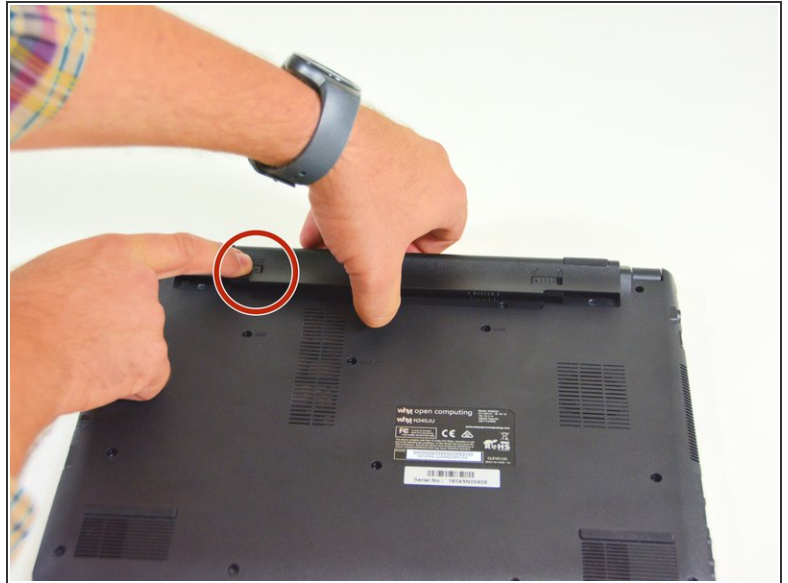
- [Tornevis Cruciforme PH1](#) (1)



PARTS:

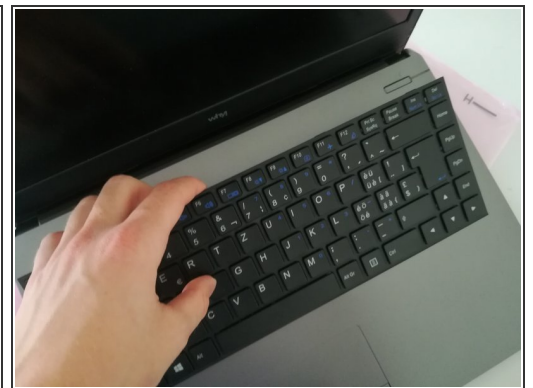
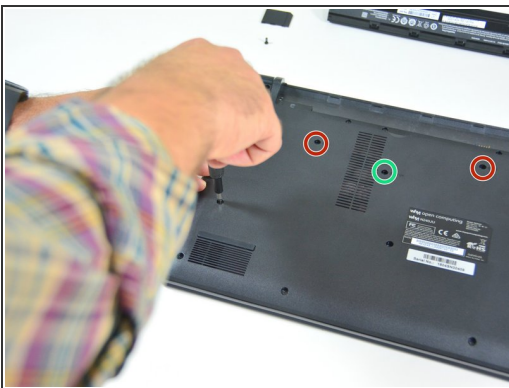
- [New Item](#) (1)
- [New Item](#) (1)
- [New Item](#) (1)
- [New Item](#) (1)

Step 1 — Battery



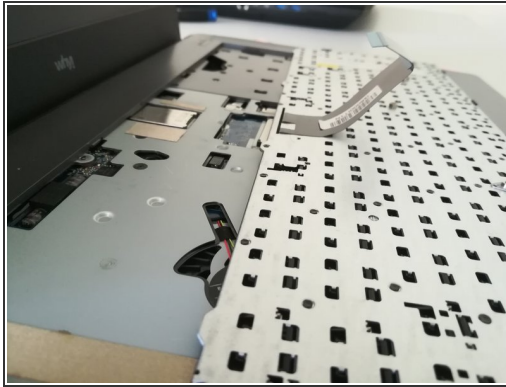
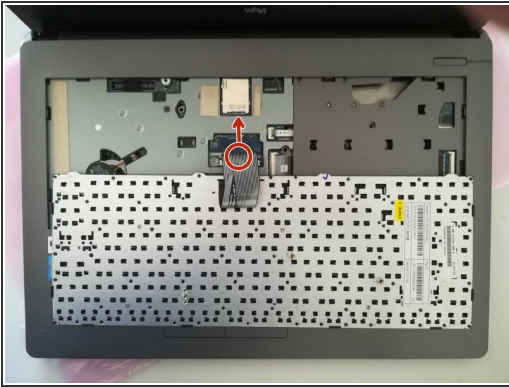
- Start by unlocking the right locking latch.
- Then, by simultaneously unlocking the left latch, lift the battery out of its socket.

Step 2 — The keyboard



- Unscrew the circled screws in green and red
- Put the computer in the position of the second image while pushing a paper clip into the hole of the screw circled in green until you hear a click
- Lift the keyboard

Step 3



- Disconnect the connector circled in red in the direction of the arrow

To reassemble your device, follow the instructions in reverse order.