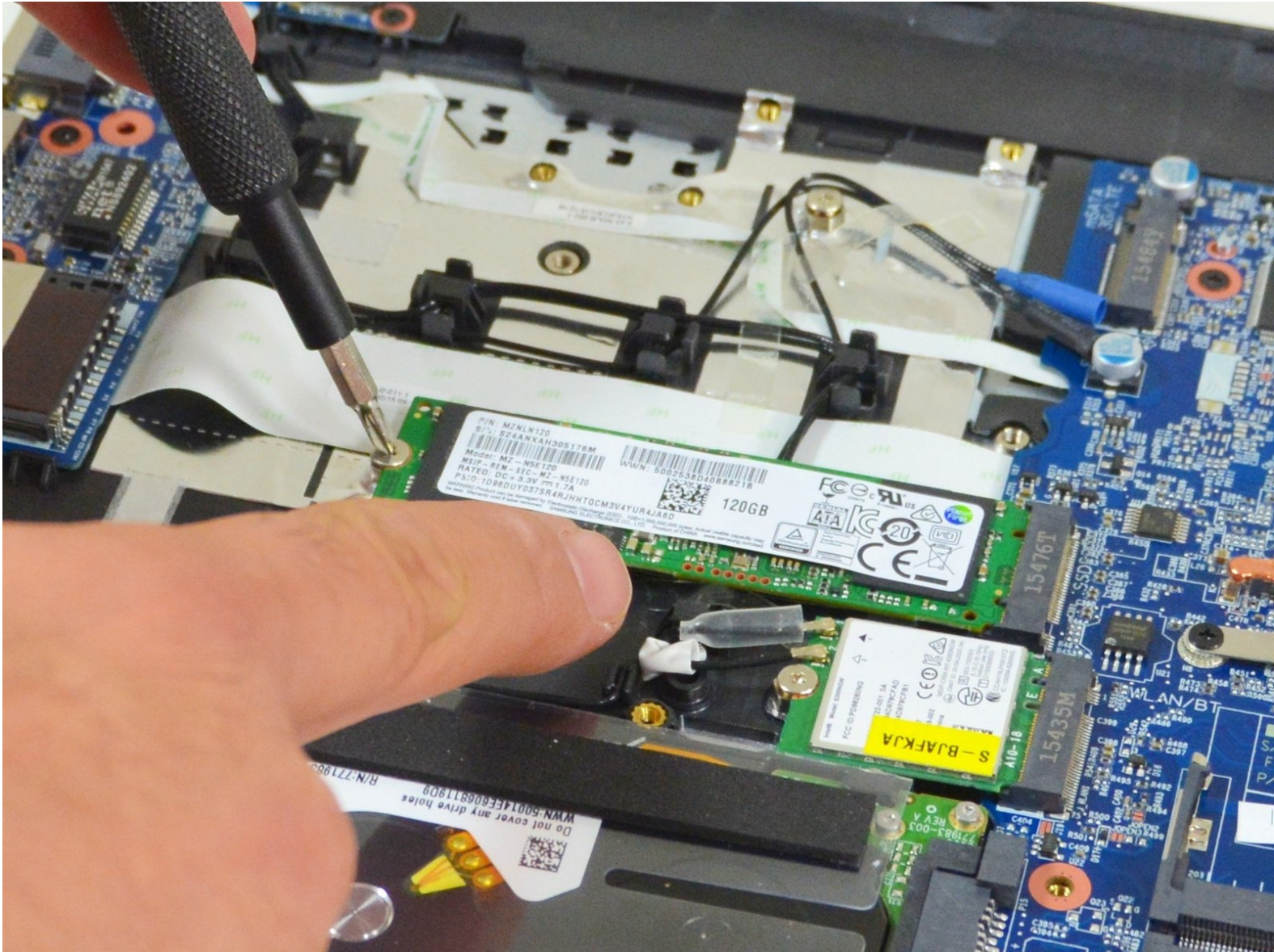




# why! N240JU Replacing SSD M.2 Disk

Written By: Felice Suglia





TOOLS:

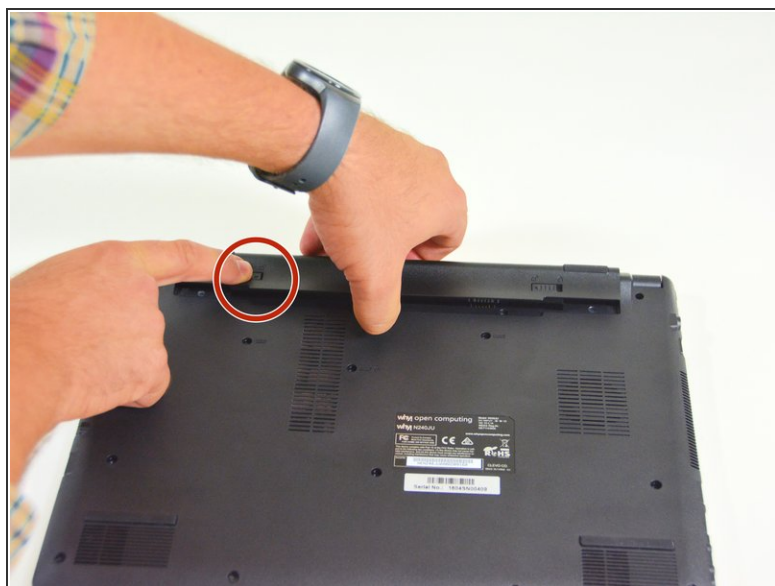
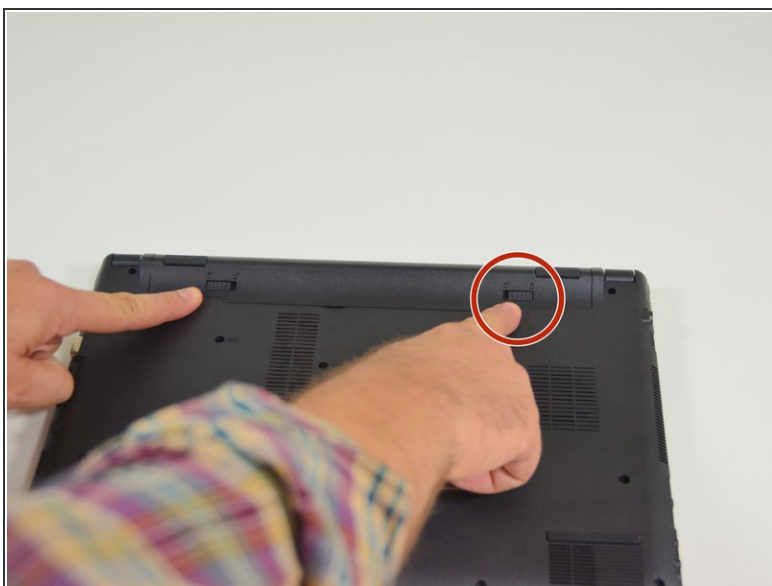
- [Tournevis Cruciforme PH1](#) (1)



PARTS:

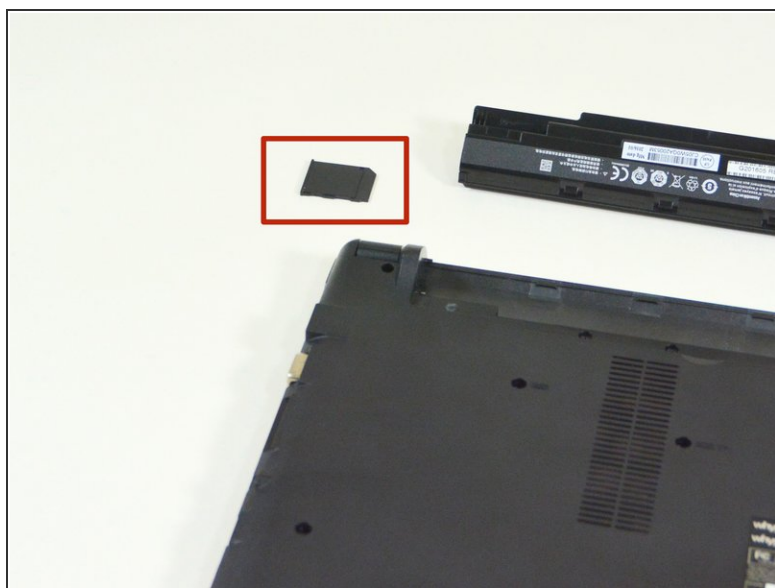
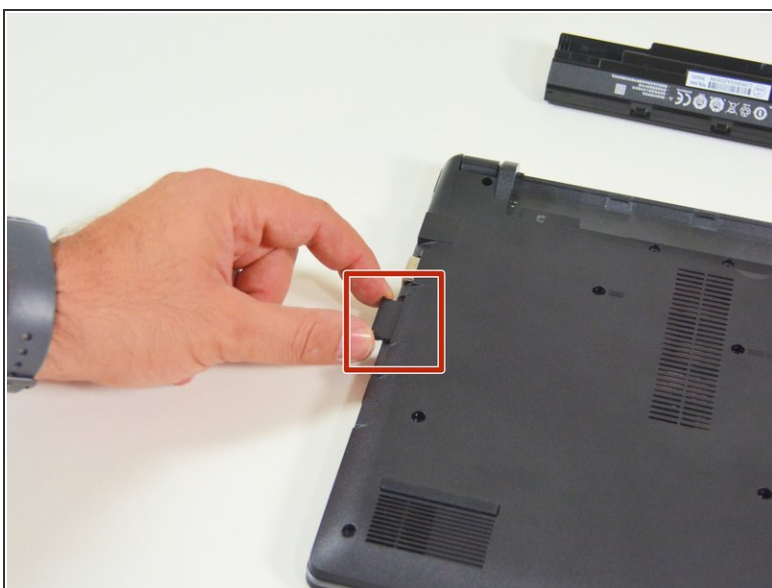
- [New Item](#) (1)
- [New Item](#) (1)
- [New Item](#) (1)
- [New Item](#) (1)

## Step 1 — Battery



- Start by unlocking the right locking latch.
- Then, by simultaneously unlocking the left latch, lift the battery out of its socket.

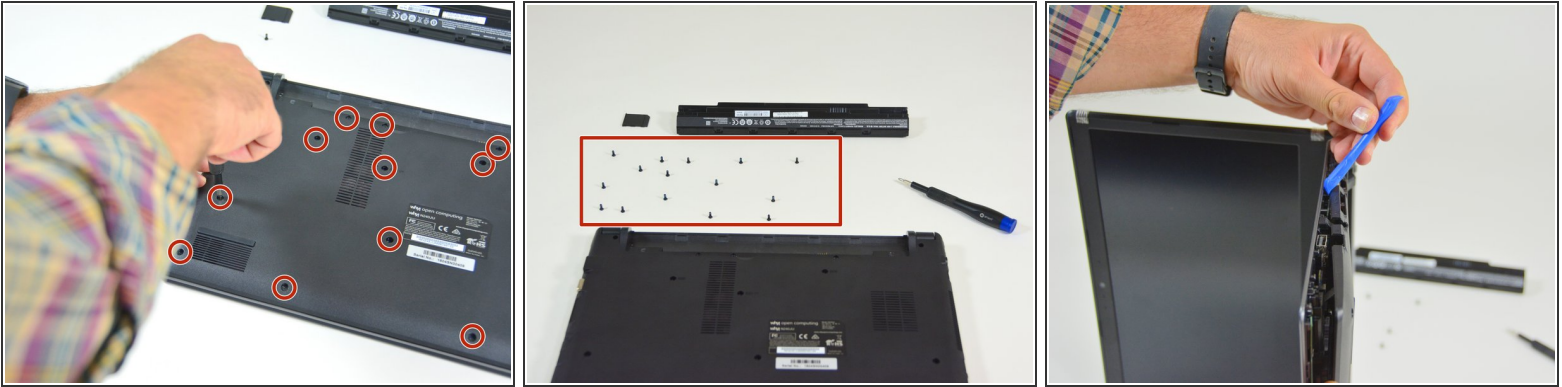
## Step 2 — Access to main components



- Begin by spotting the dummy memory card.
- Then, remove it and put it on your workplan.

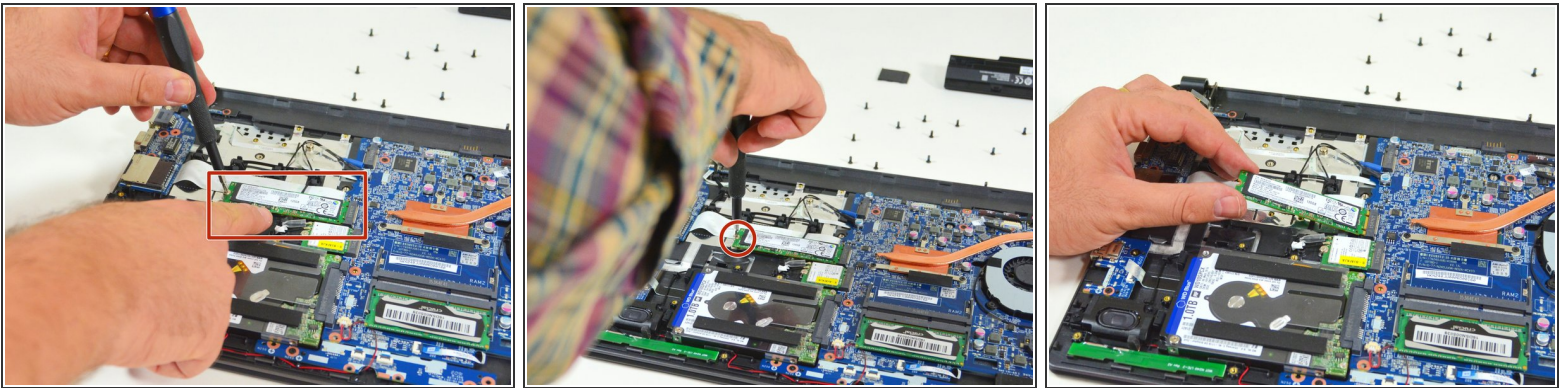


## Step 3



- Locate the 15 screws that hold the bottom cover of the device in place.
- Unscrew them and place them on your work surface.
- Then, un-clip the bottom cover, starting with the side shown in the third picture.

## Step 4 — SSD M.2 disk



- Locate the M.2 SSD in its slot.
- Unscrew the fastening screw of the latter.
- Lift and remove the SSD M.2 drive from its connector.

To reassemble your device, follow the instructions in reverse order.