



# Disassembling HP Compaq dx2000MT Hard Drive

This guide will show you how to remove the hard...

Written By: Eva Pong



---

# INTRODUCTION

This guide will show you how to remove the hard drive from your HP Compaq dx2000MT

---



## TOOLS:

- [Anti-Static Wrist Strap](#) (1)
  - [6-in-1 Screwdriver](#) (1)
  - [Phillips #2 Screwdriver](#) (1)
  - [T15 Torx Screwdriver](#) (1)
-

## Step 1 — Removing the HP Compaq dx2000MT Case Doors



- Turn off your computer and remove the power cable by pulling it straight out of its socket.

## Step 2



- Remove the two Phillips #2 screws that secure the case door to the device.

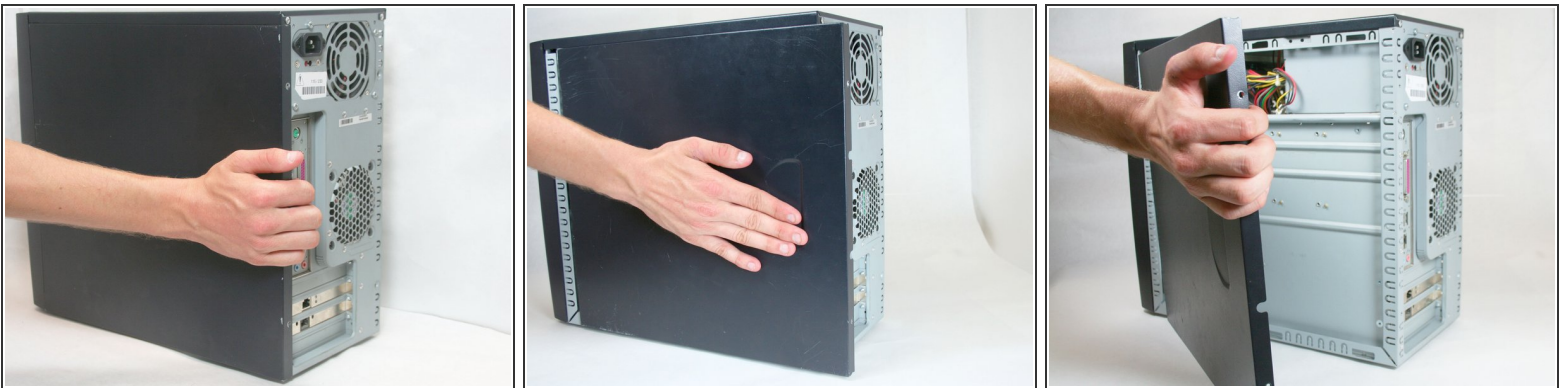


### Step 3



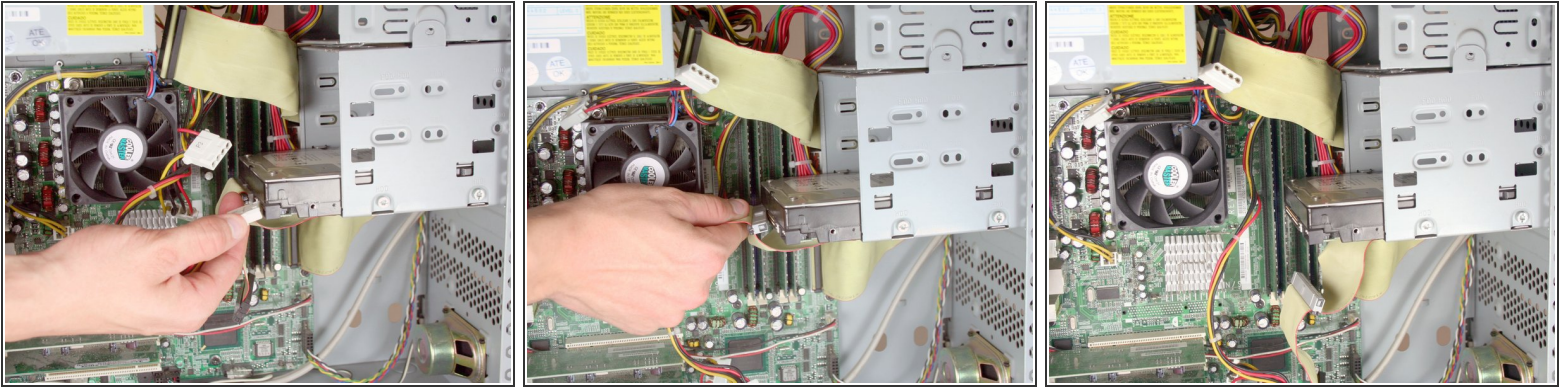
- Remove the side case door by pushing towards the rear of the device with your hand.
  - ❗ This may take considerable force so keep pushing!
- Once you slide the door back, remove it by pulling it outwards from the device.

### Step 4



- Remove the side case door by pushing towards the rear of the device with your hand.
  - ❗ Once again, this may take considerable force.
- Once you slide the door back, remove it by pulling it outwards from the device.

## Step 5 — Disassembling HP Compaq dx2000MT Hard Drive



- Remove the IDE data and power cables from the hard drive.

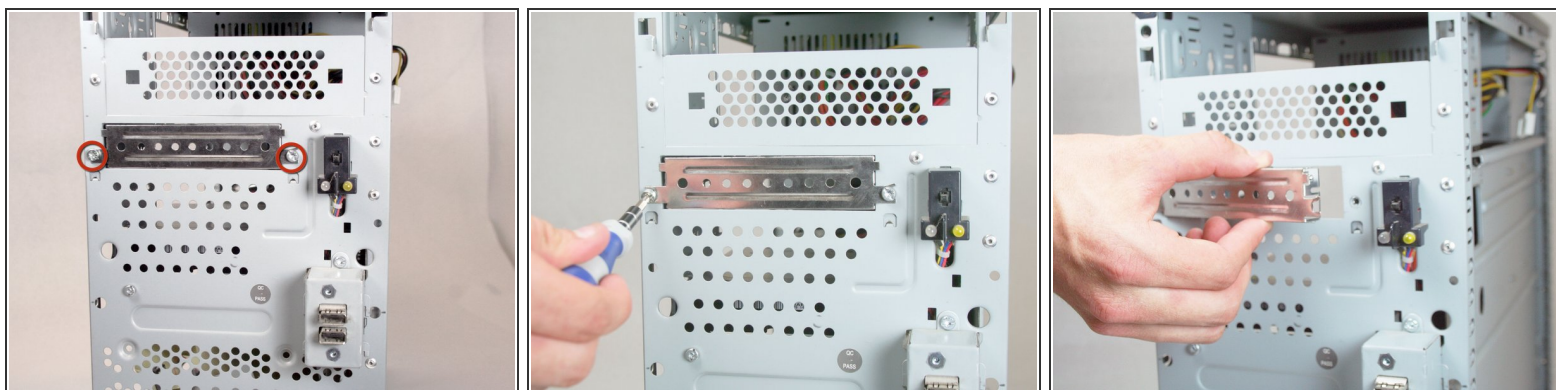
## Step 6



- Remove the front bezel by pulling upwards and out from below the lowest air vent.

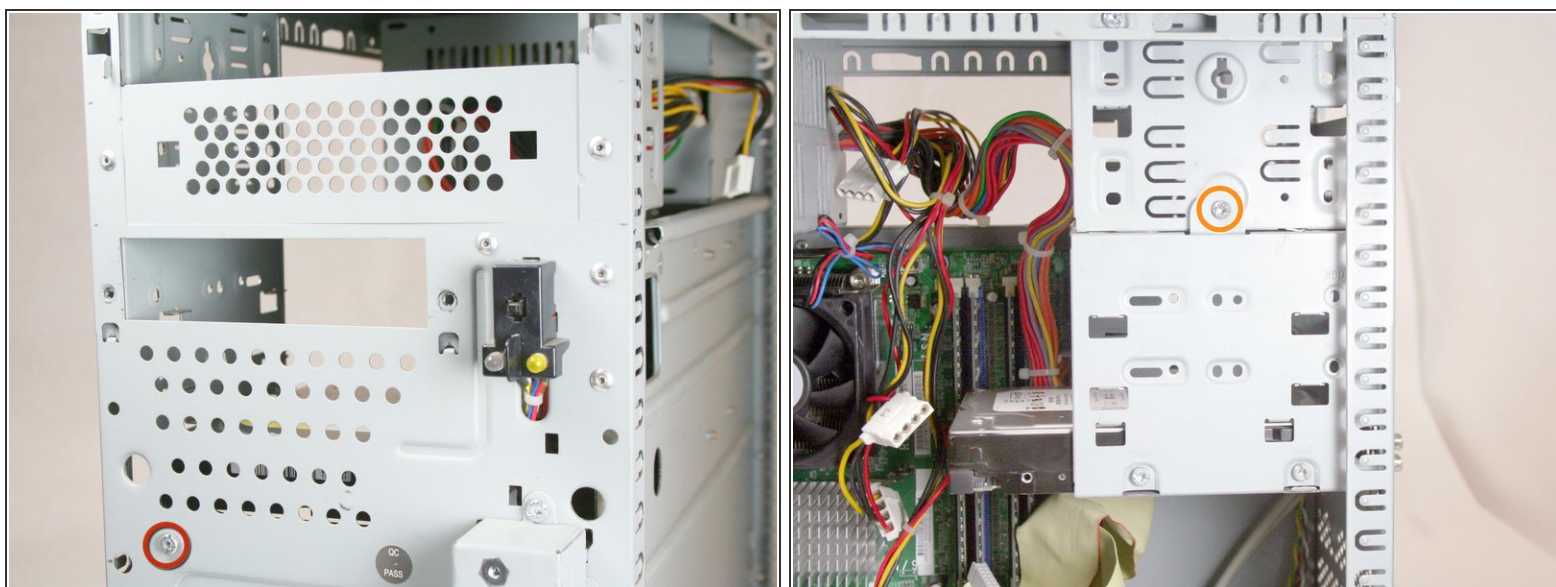


## Step 7



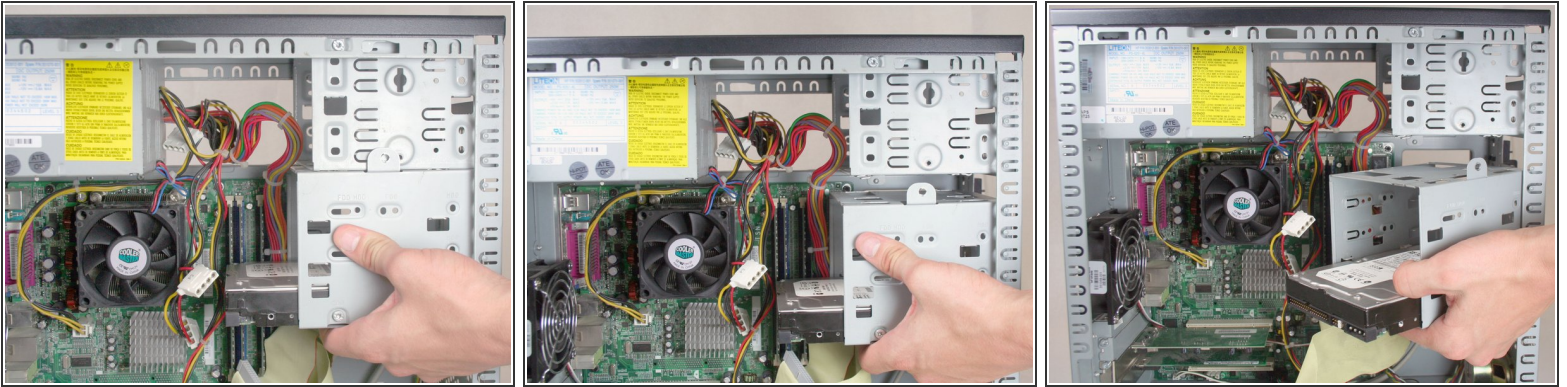
- Remove the external drive faceplate by removing the two Torx T15 screws.

## Step 8



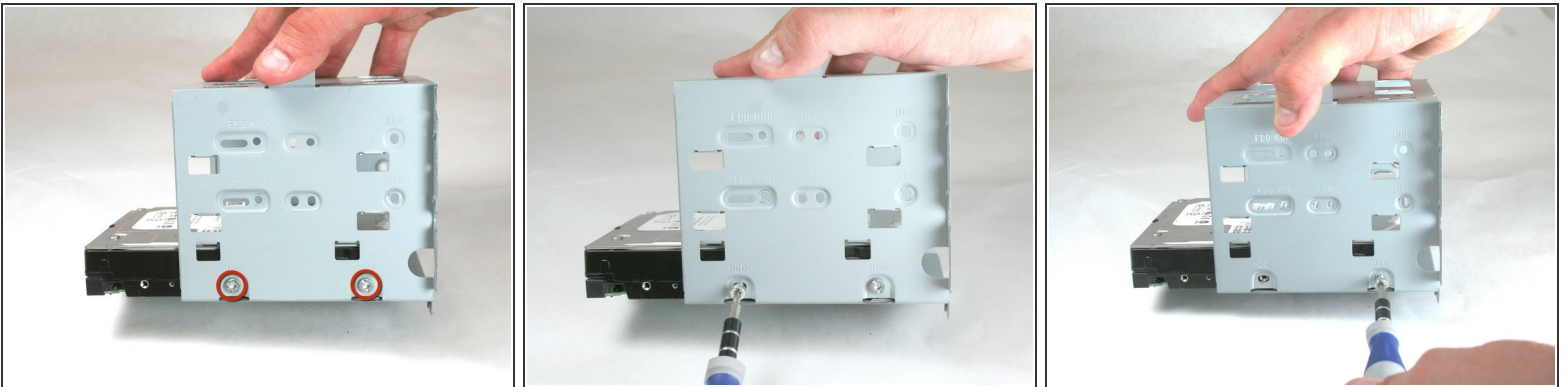
- Remove the following screws:
  - Front Torx T15.
  - Torx T15 mounting the hard drive cage to the optical drive bay.

## Step 9



- Fully remove the hard drive cage by sliding it towards the back of the device and pulling down.

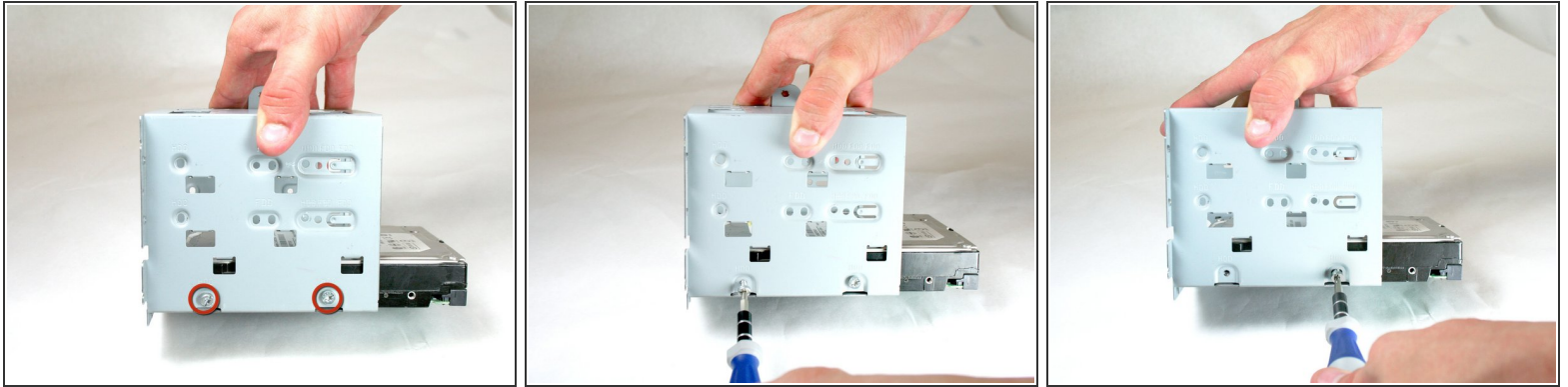
## Step 10



- Remove the two Torx T15 screws holding this side of the hard drive in place.



## Step 11



- Proceed to the other side of the hard drive cage.
- Remove the two Torx T15 screws holding this side of the hard drive in place.

## Step 12



- Remove the hard drive from the hard drive cage by pulling it outward from the cage.

To reassemble your device, follow these instructions in reverse order.