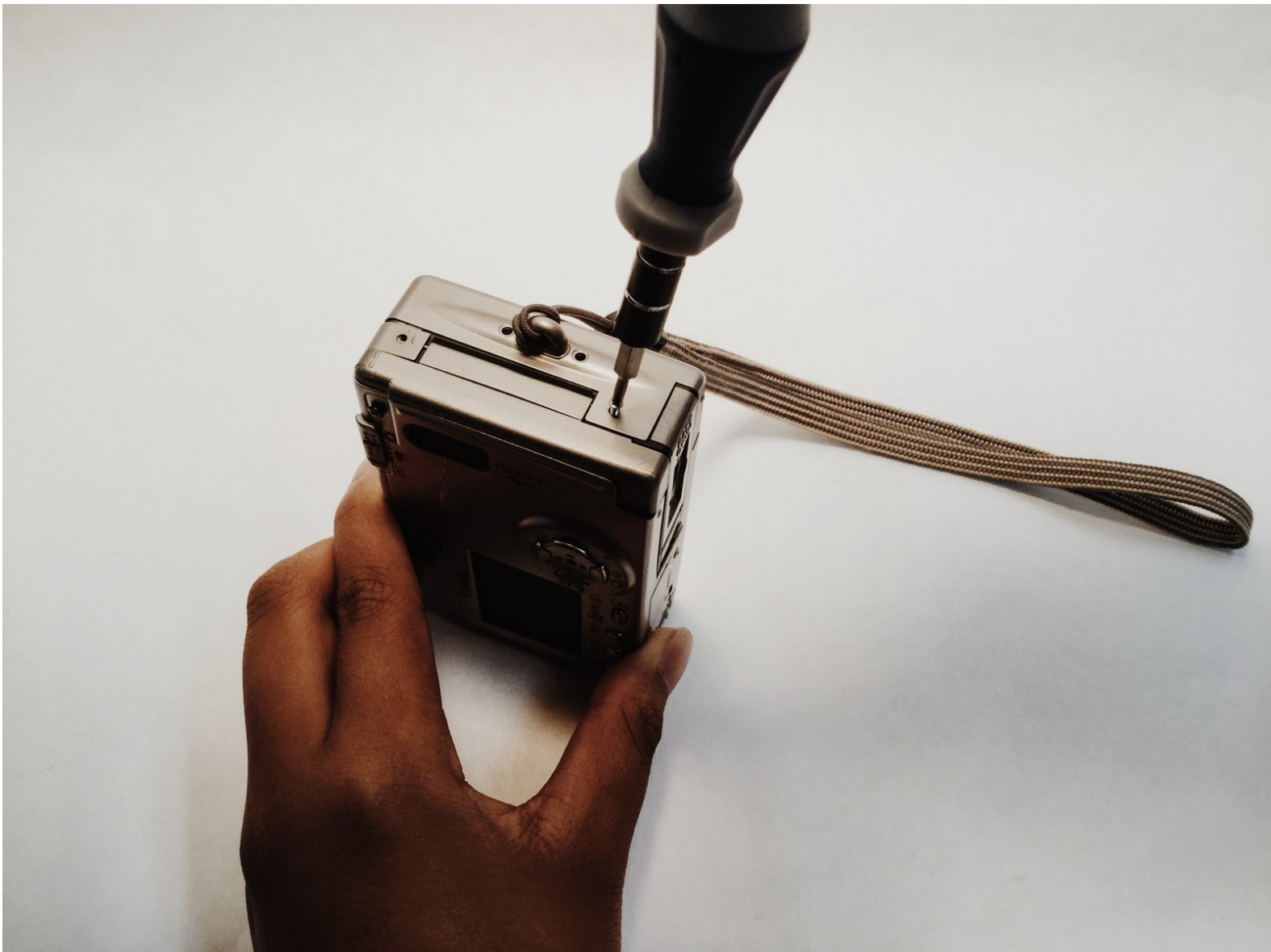




# Canon PowerShot S230 Display Screen Replacement

A guide to removing and replacing a display screen on a Canon PowerShot S230 Digital ELPH camera.

Written By: Angie



---

# INTRODUCTION

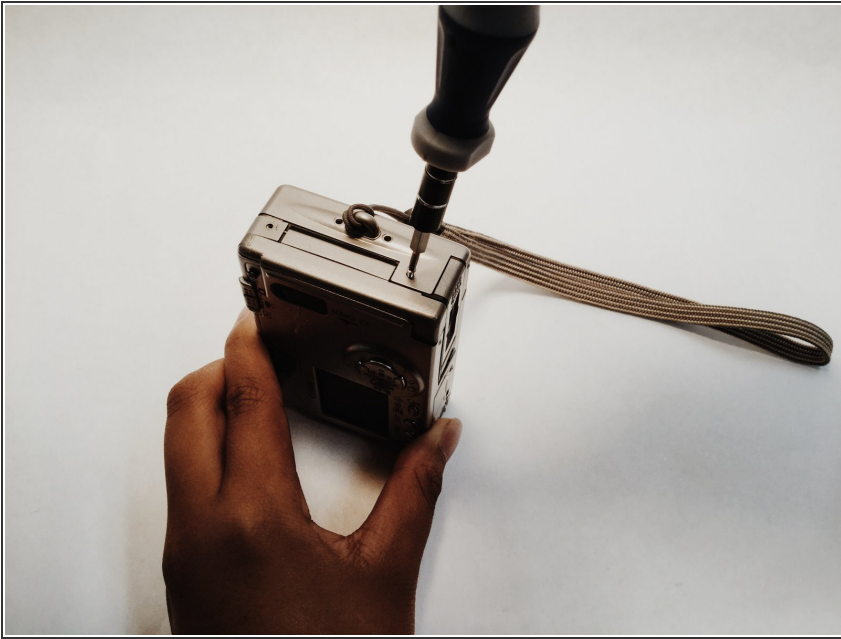
We will be teaching how to replace the screen on a Canon PowerShot S230.



## TOOLS:

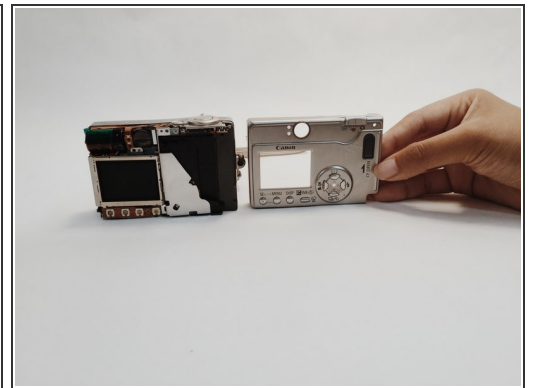
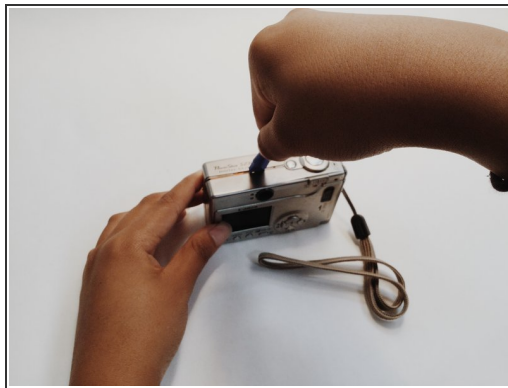
- [Essential Electronics Toolkit](#) (1)
-

## Step 1 — Display Screen



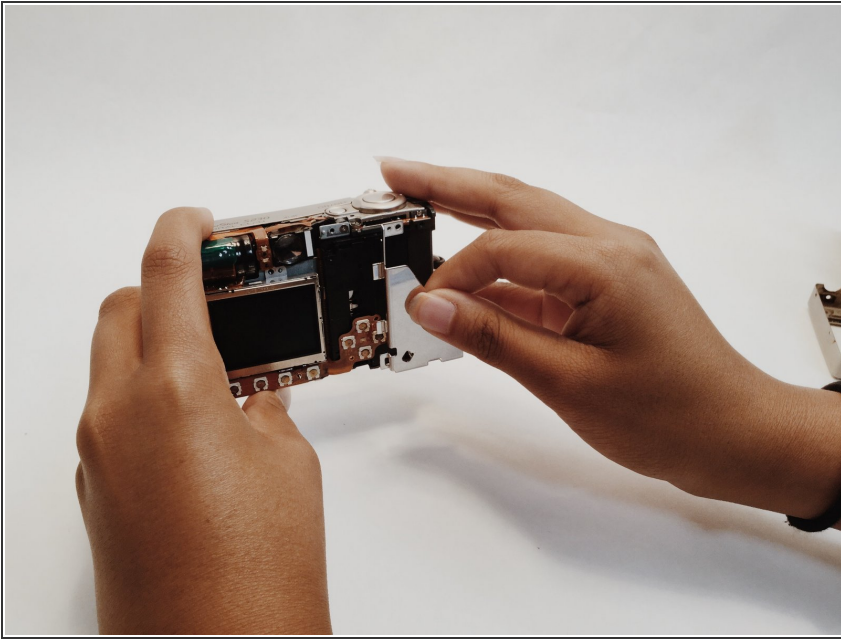
- Unscrewing the small screws to take off the backing, screws are on the side and there are 4

## Step 2



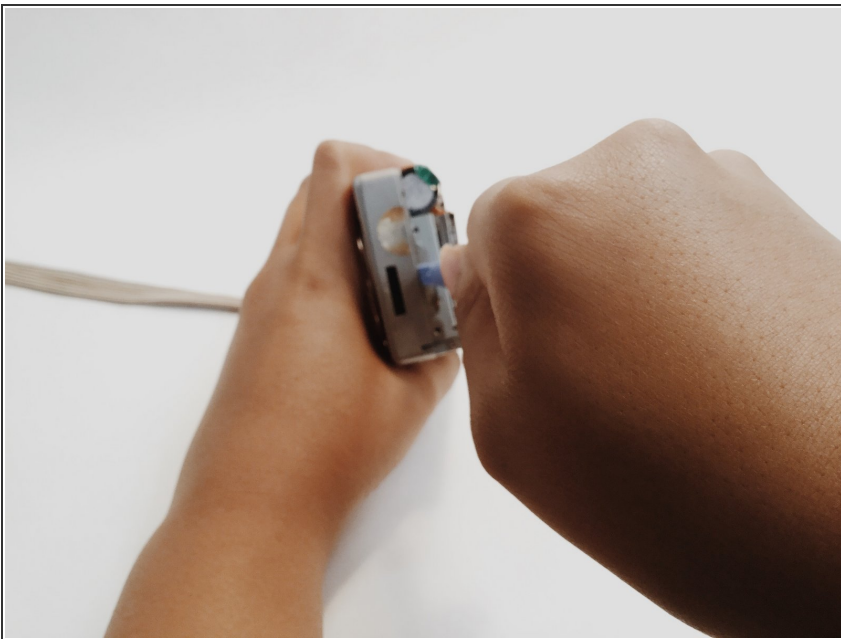
- Pry open the backing
- Look for all screws before moving on

### Step 3



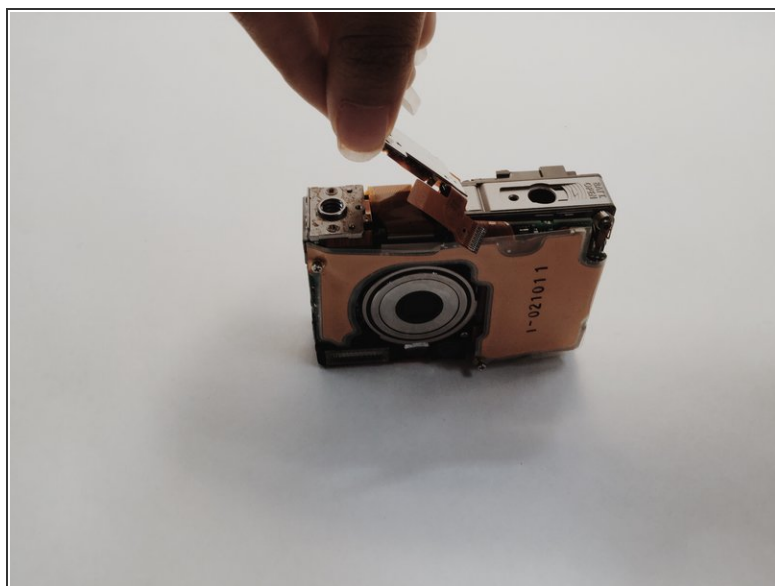
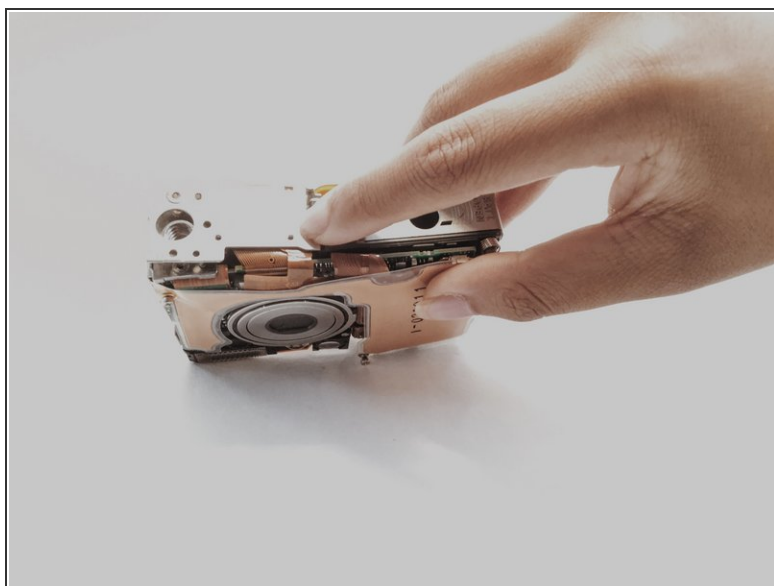
- Remove metal shield from camera
- It's fine if you just use your hands

### Step 4



- Pry off the the front casing
- REMOVE ALL SCREWS BEFORE MOVING ON

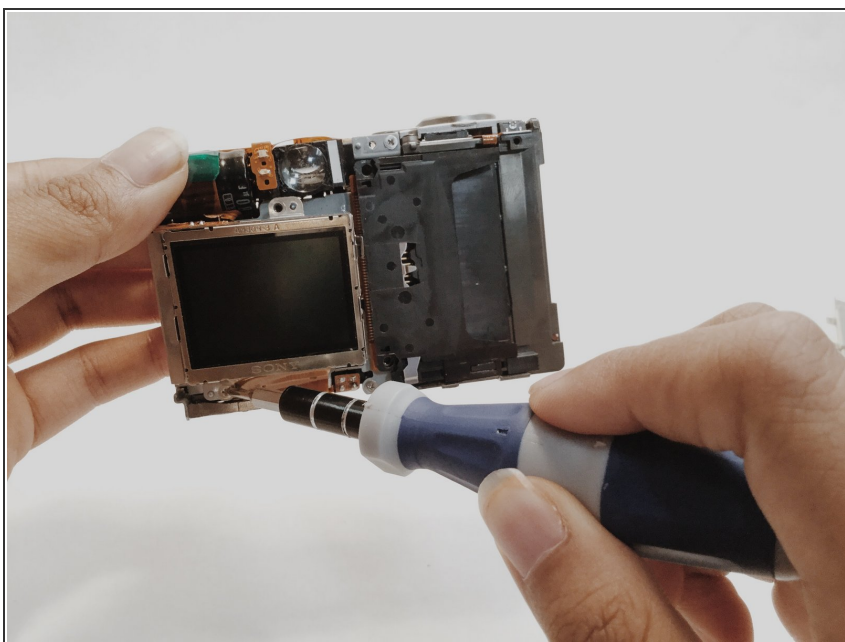
## Step 5



- Remove screws and metal shield at the bottom of the camera

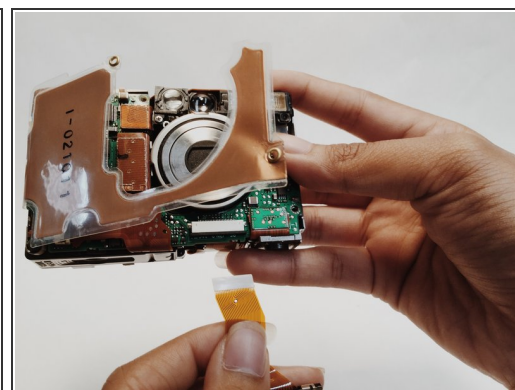
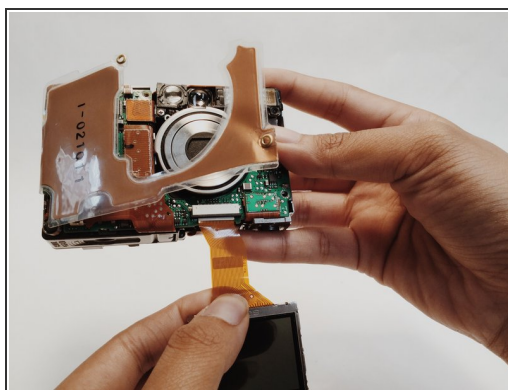
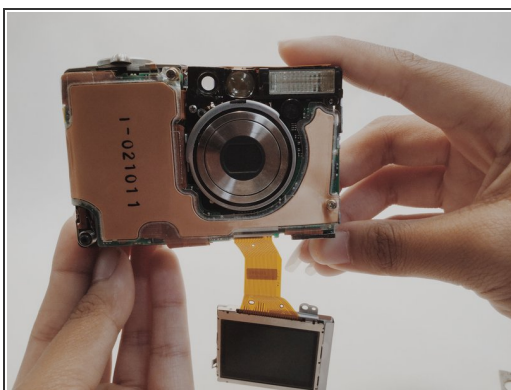


## Step 6



- Remove the screen, also remove any screws that may get in the way, if the screen pops out it's okay, it's suppose to do that. Remove the screw at the bottom

## Step 7



- Remove the highlighted screws to remove the copper facing

## Step 8



- Now that the screen is replaced, all you need to do is go through the steps in reverse!

To reassemble your device, follow these instructions in reverse order.