



KLH Speaker Driver Replacement

Replace the driver on your KLH bookshelf speaker.

Written By: Gavin Giesmann



INTRODUCTION

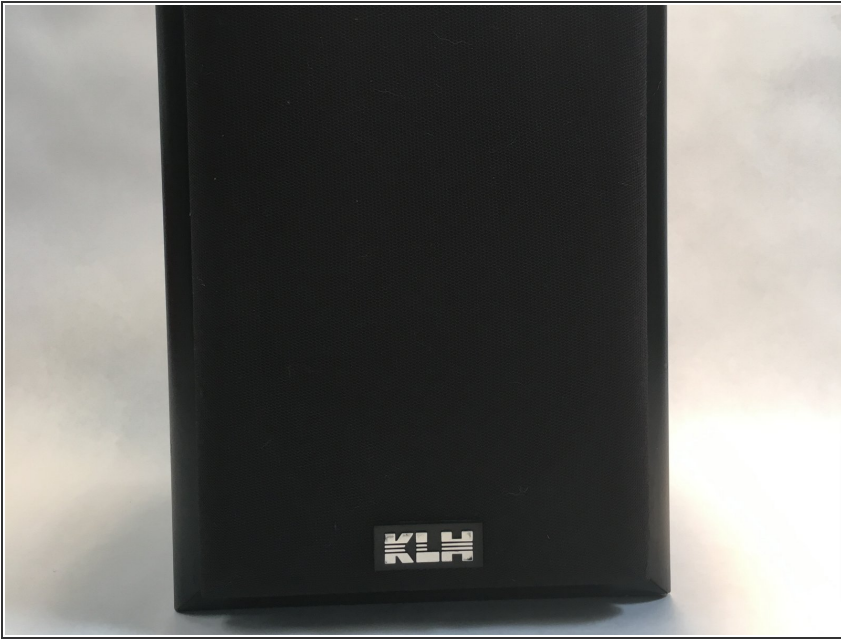
If your KLH shelf speaker no longer produces sound from the larger speaker this guide will help you get those beats bumping again by replacing the larger speaker.



TOOLS:

- [Small Phillips Head Screwdriver](#) (1)
 - [Flush Wire Cutters](#) (1)
 - [Soldering Iron](#) (1)
-

Step 1 — Driver



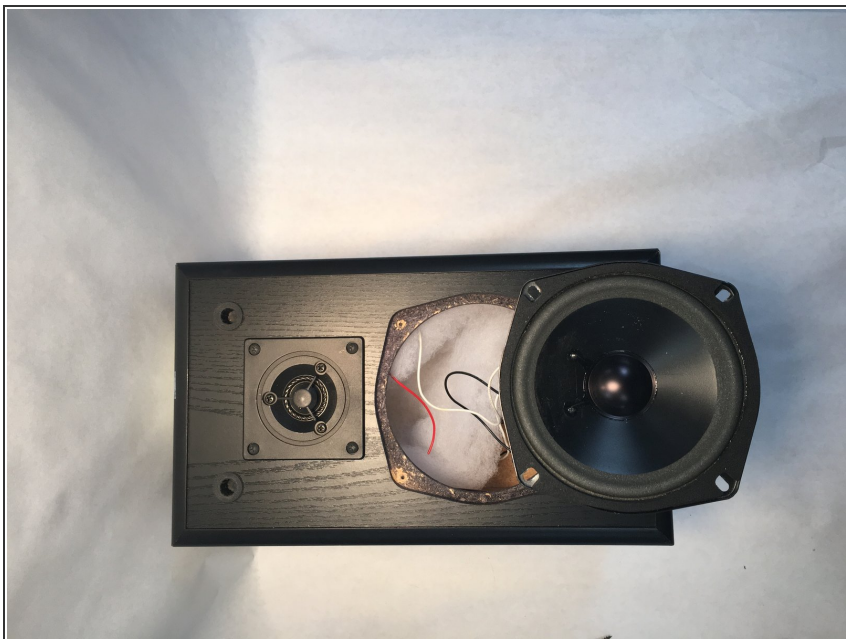
- This is what the speaker will look like when you start.
- Step 1: Remove the speaker cover.

Step 2



- Step 2: Remove all 4 of the 2 cm screws.

Step 3



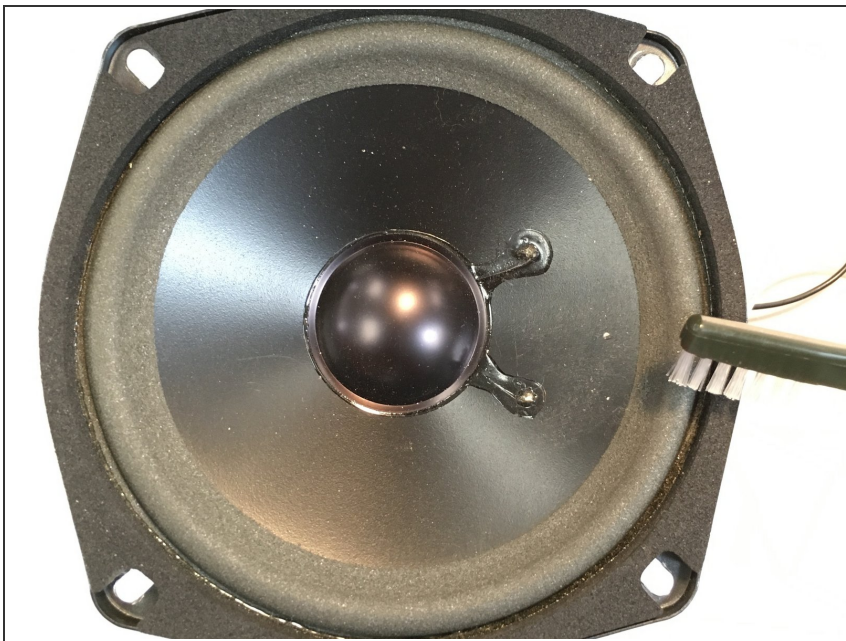
- Step 3: Carefully remove the speaker from the speaker box. Be sure not to break the 2 wires connecting the speaker.

Step 4



- Step 4: Carefully cut the 2 wires connecting the speaker. Make sure to cut the wires about half way from the speaker.

Step 5



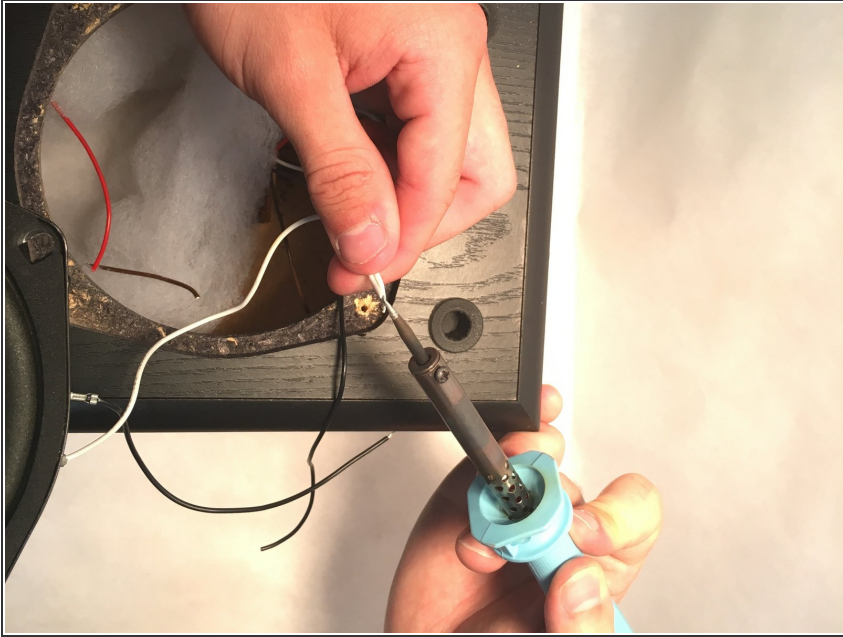
- Step 5: Make sure the the new speaker is the same size, and is ready to be placed inside the cabinet.

Step 6



- Step 6: Strip both of the wires so they are ready to be soldered together.

Step 7



- Step 7: Solder the wires together.

Step 8



- Step 8: Screw the new speaker back into the box using all 4 of the 2 cm screws.

Step 9



- Step 9: Place the cover back onto the speaker box.

To reassemble your device, follow these instructions in reverse order.