



Logitech V220 - Cordless Optical Mouse Teardown

Scope: The scope of this teardown encompasses...

Written By: Tyler Price



INTRODUCTION

Scope

The scope of this teardown encompasses the Logitech V220 and its owners/users.

TOOLS:

Phillips #0 Screwdriver (1)

Tweezers (1)

Metal Spudger (1)

Spudger (1)

Step 1 — Removing the USB Wireless Receiver



 Wash your hands before replacing the battery to prevent debris getting into the mouse and damaging its internal components.

- Orient the mouse so you are viewing its base.
- Using your fingers, gently remove the USB wireless receiver by sliding it towards you.
 - ⓘ USB removal will result in the power switch to be in its **ON** position.
- With your fingertip, engage the power switch to its **OFF** position to ensure the mouse is not powered.

Step 2 — Removing the Mouse Pads



- Locate the four mouse pads.
- Use the rectangular end of the metal spudger to get underneath each mouse pad, pry them up, and peel them off.

Step 3 — Unscrewing the Mouse Housing Screws



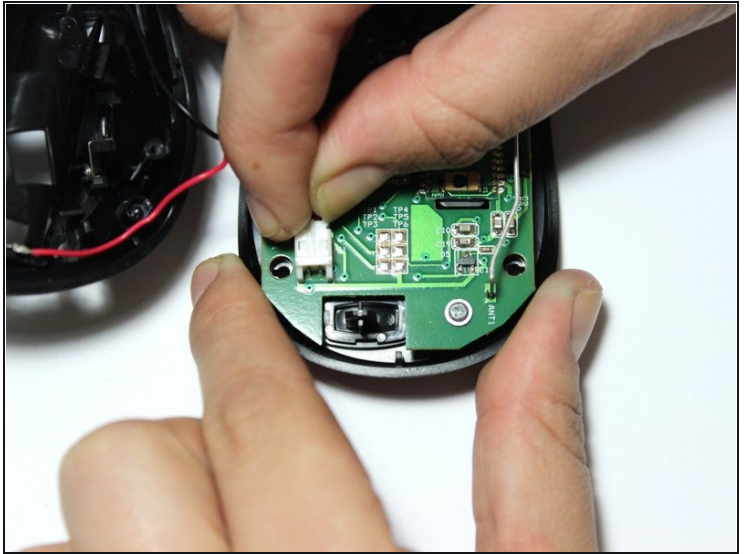
- Locate the four #0 Phillips screws where the mouse pads previously were.
- Unscrew the four #0 Phillips screws with the Phillips #0 screwdriver.

Step 4 — Separating the Mouse Housing



- Once the housing screws are fully removed, slowly (and carefully) separate the top and bottom halves of the housing.
⚠ Rapid separation of the housing halves may result in damaging the power cables (red and black wires) and molex (white plug).

Step 5 — Detaching the Top Mouse Housing



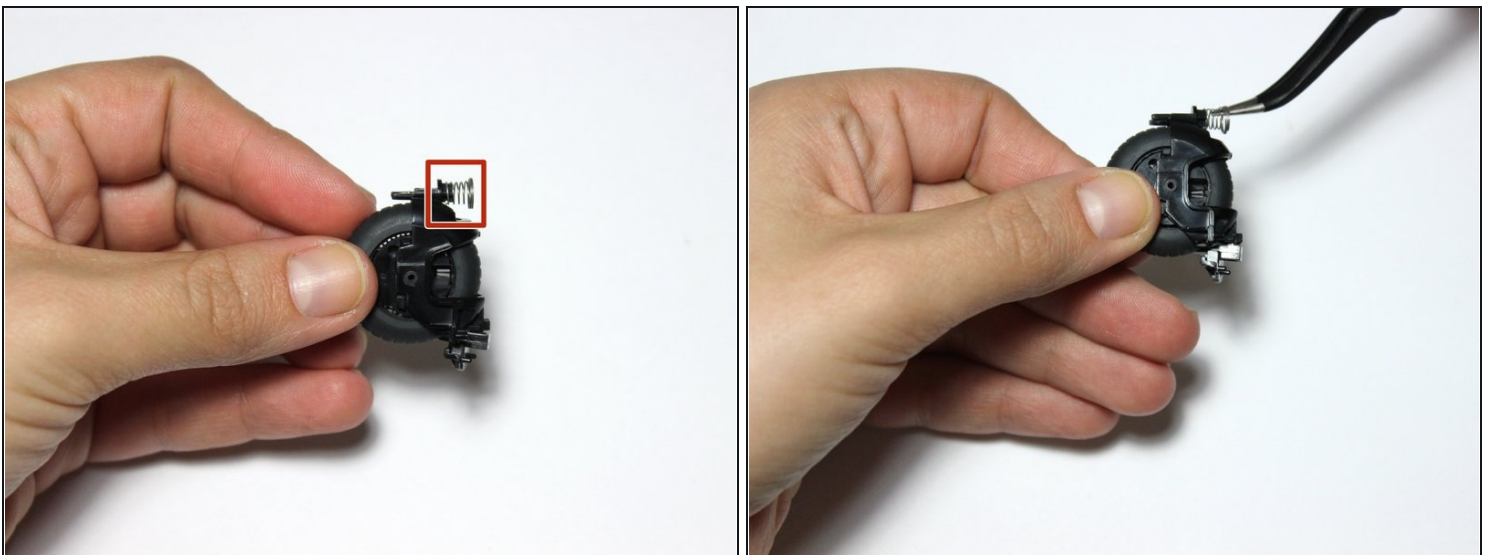
- Gently set the mouse halves down on a flat surface.
- Secure the base half with one hand.
- With thumb and forefinger, grab the end of the molex and pull it away from you until the molex is unplugged.

Step 6 — Removing the Scroll Wheel



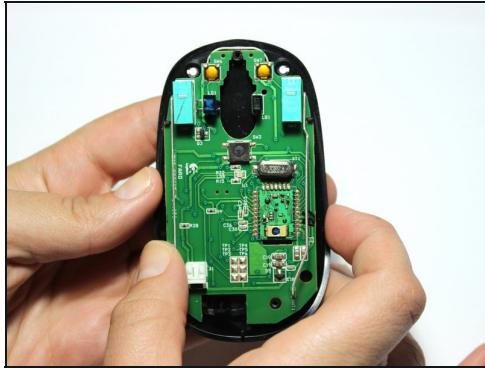
- Locate the one, scroll wheel, #0 Phillips screw near the very front edge of the mouse.
- Turn the mouse 90 degrees clockwise.
- While supporting the rear of the mouse base, unscrew the #0 Phillips scroll wheel screw.
- Once the scroll wheel screw is fully removed, manually extract the scroll wheel and spring assembly.

Step 7 — Removing the Scroll Wheel Spring



- Locate the scroll wheel spring.
- Use the [tweezers](#) to gently remove the spring by slowly tugging the spring away from the scroll wheel assembly.

Step 8 — Removing the Circuit Board



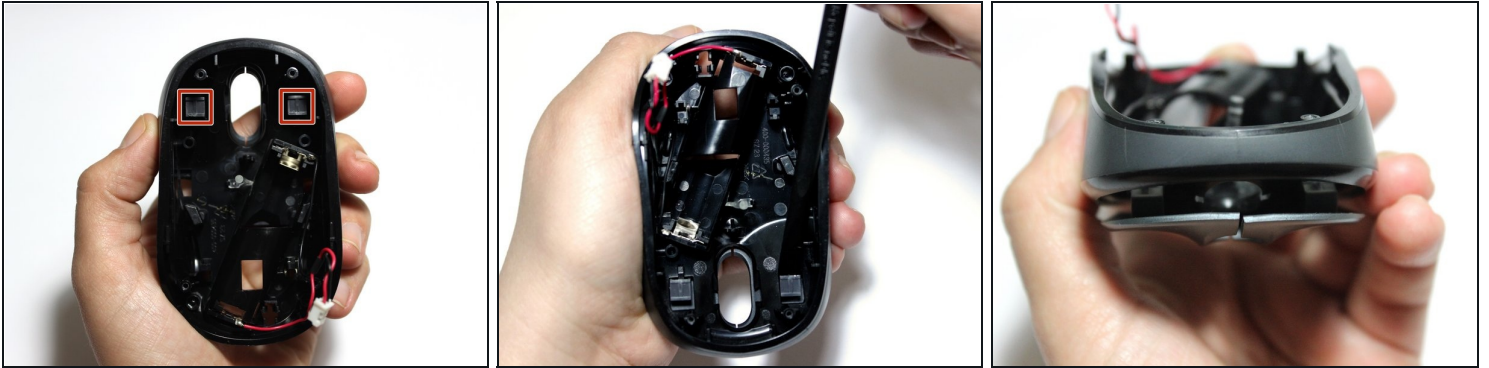
- Locate and remove the circuit board screw.
- Grip the edges of the circuit board.
- Manually remove the circuit board from the base of the mold housing.

Step 9 — Removing the Mouse Buttons Screw



- Locate and remove the #0 Phillips screw in the middle of the mouse.

Step 10 — Removing the Mouse Buttons



- Flip over the top half of the mouse housing so you are viewing underneath it.
- Locate the mouse button hooks.
- Rotate the housing 180 degrees clockwise.
- Using the spudger, firmly push down on each mouse button until the mouse button is released from the hook.
- Viewing the front of the mouse, the left and right mouse buttons should be detached from the housing.

Step 11



- Hold the housing so you are looking down the battery slot.
- Place the flat end of the spudger between the mouse buttons and the housing.
- Pry off the mouse buttons.

