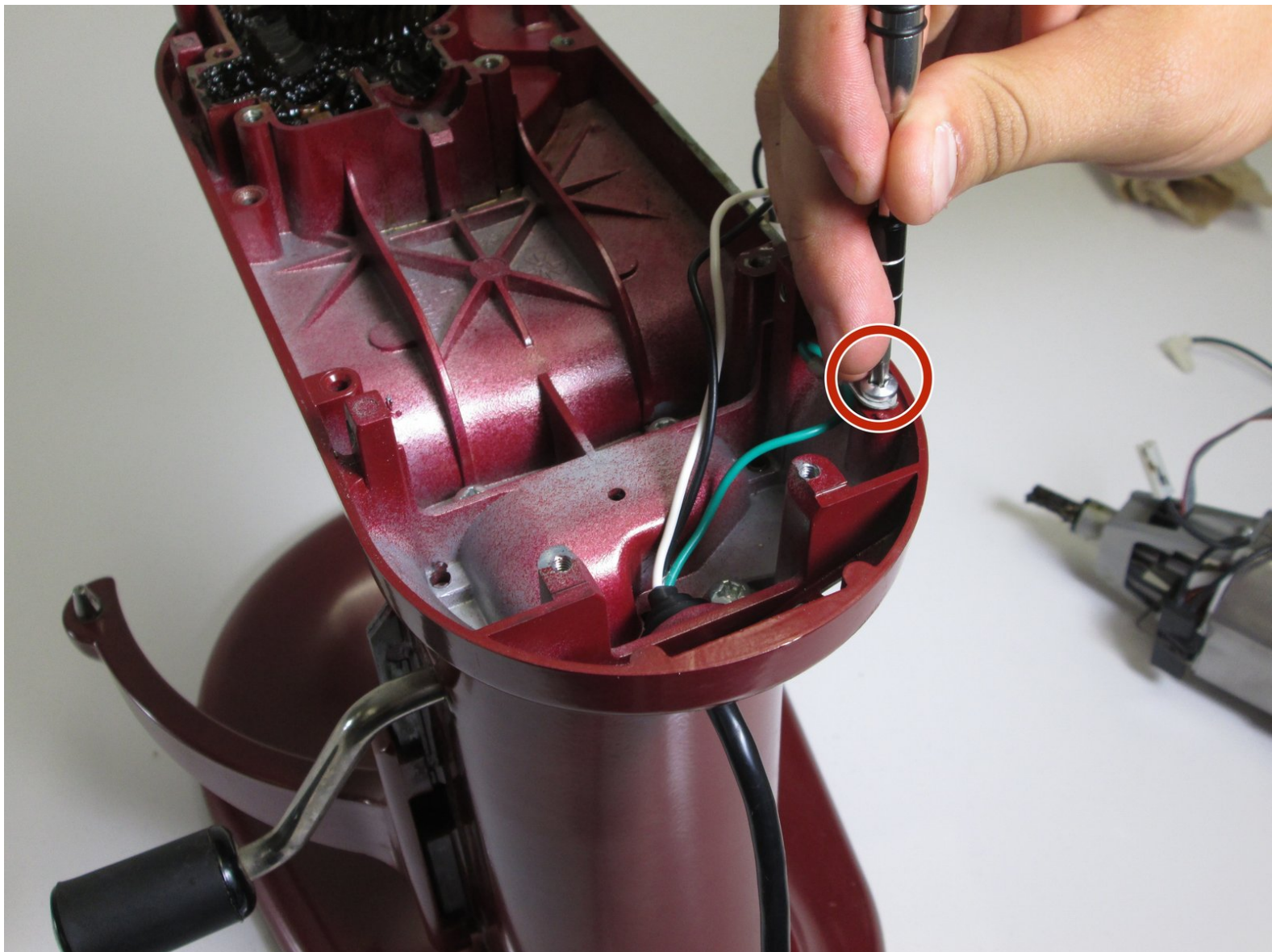




# KitchenAid Professional 600 Power Cord Replacement

This guide will provide a detailed step-by-step instruction guide on how to remove the power cord from the KitchenAid Professional 600.

Written By: Luke



---

## INTRODUCTION

This guide will provide a detailed step-by-step instruction guide on how to remove the power cord from the KitchenAid Professional 600.



### TOOLS:

- [Phillips #2 Screwdriver](#) (1)
-

## Step 1 — Top Cover



- Take out the screw which holds on the silver band using a Phillips #2 screwdriver.
- Remove the silver band.

## Step 2



- Remove the four Phillips #2 screws located around the mixer where the band was removed.
- ⓘ This picture only shows two of the screws that you need to remove. The other two are on the exact opposite side of the mixer.

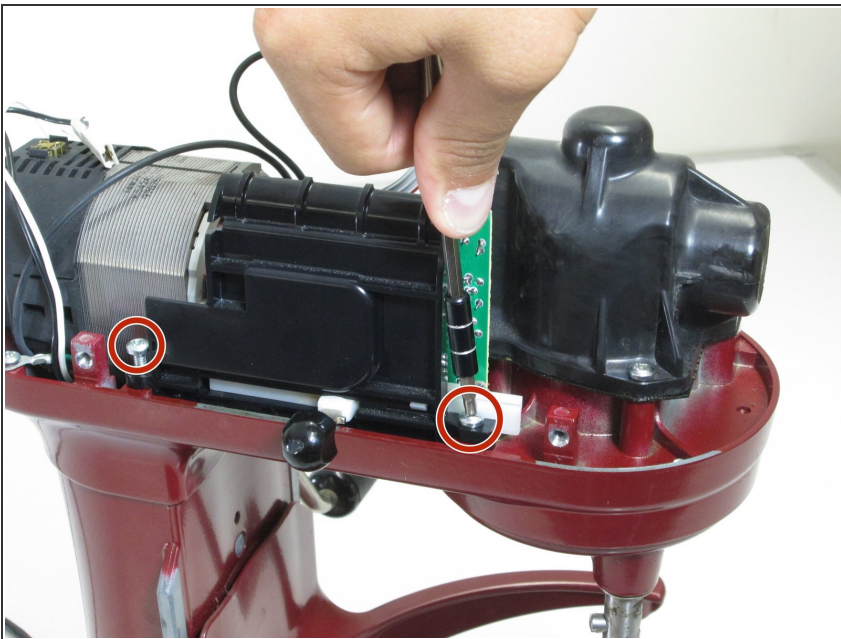


### Step 3



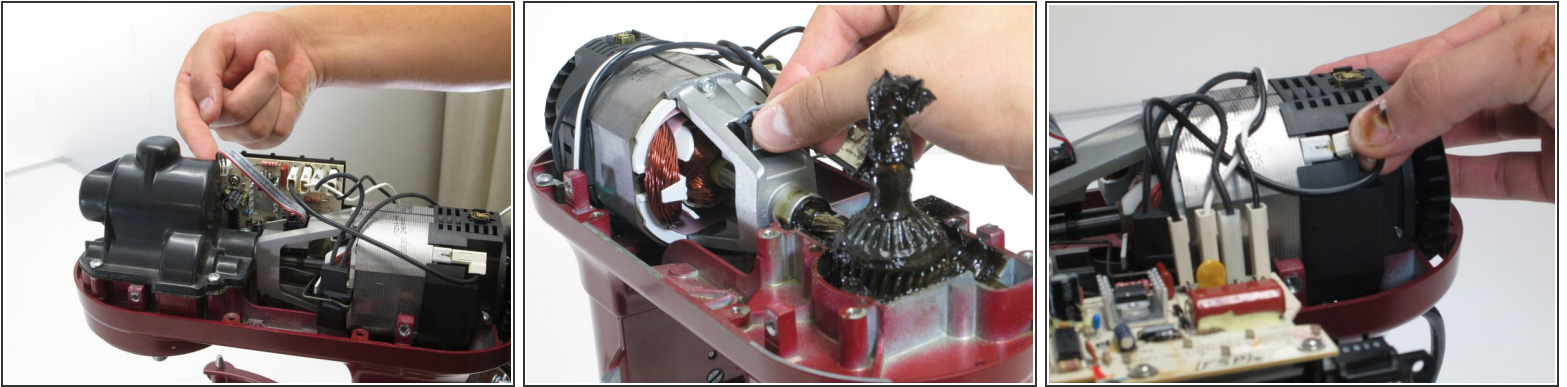
- Remove the top of the mixer to reveal the inner parts.
- ⓘ The top should lift off, but may not if it is stuck. A sharp strike from the back with the hand may unstick it. It will slide forward about a 3/8 of an inch. Push it back again from the front and it should be free enough to lift.

### Step 4 — Speed Selector



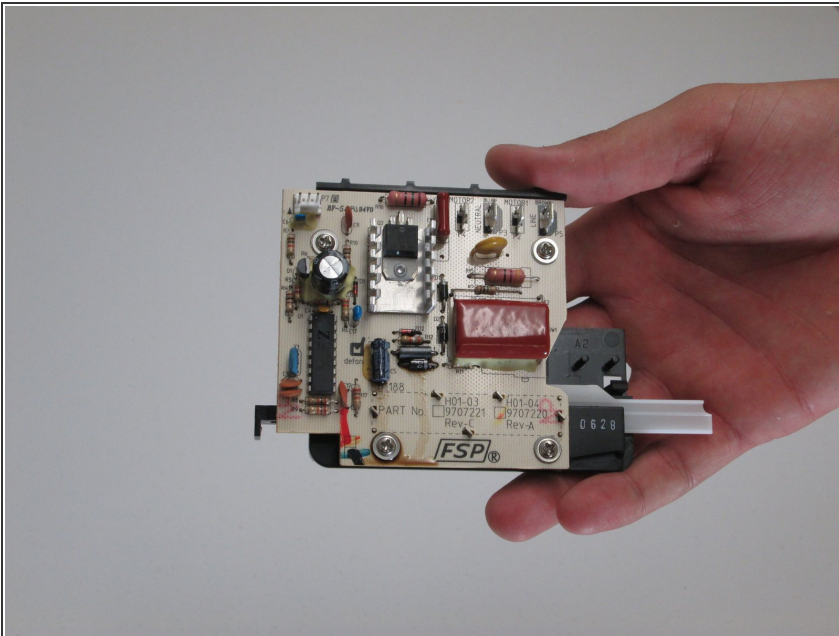
- Locate the selector switch.
- Remove the two Phillips #2 screws holding the selector switch in place.

## Step 5



- Unplug the cords attached the drive motor to the switch.
- i** We suggest numbering them left from right so they are reattached to the replacement part in the right order.

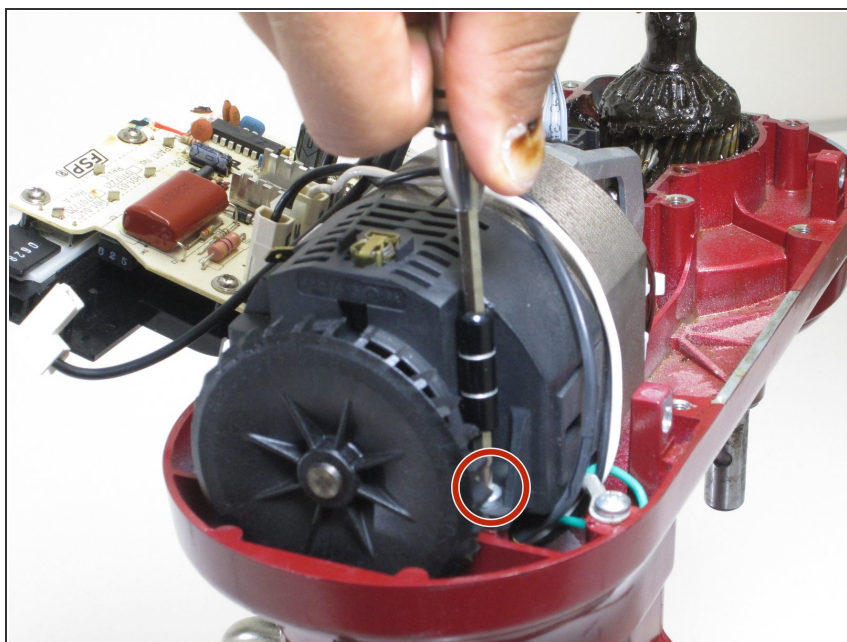
## Step 6



- Pull out the Selector Switch.

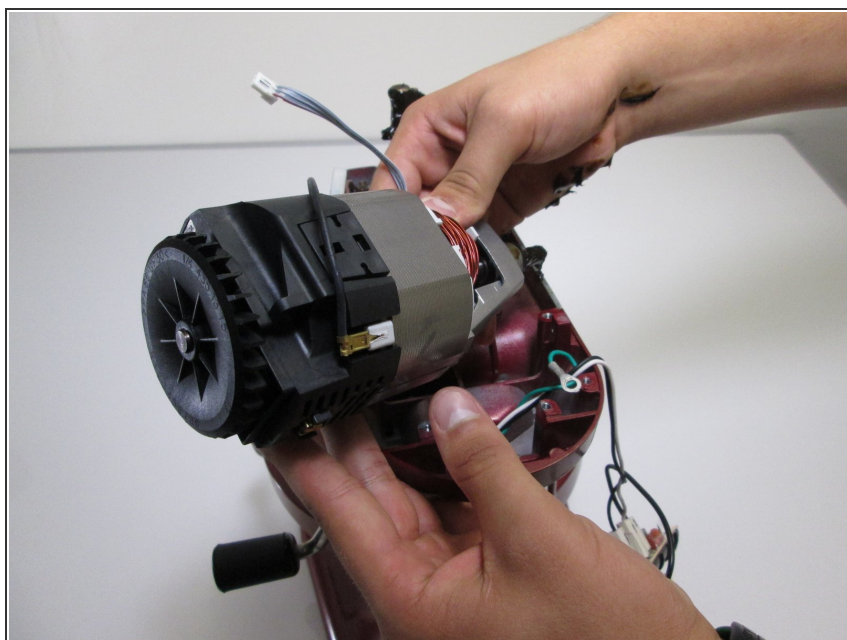


## Step 7 — Drive Motor



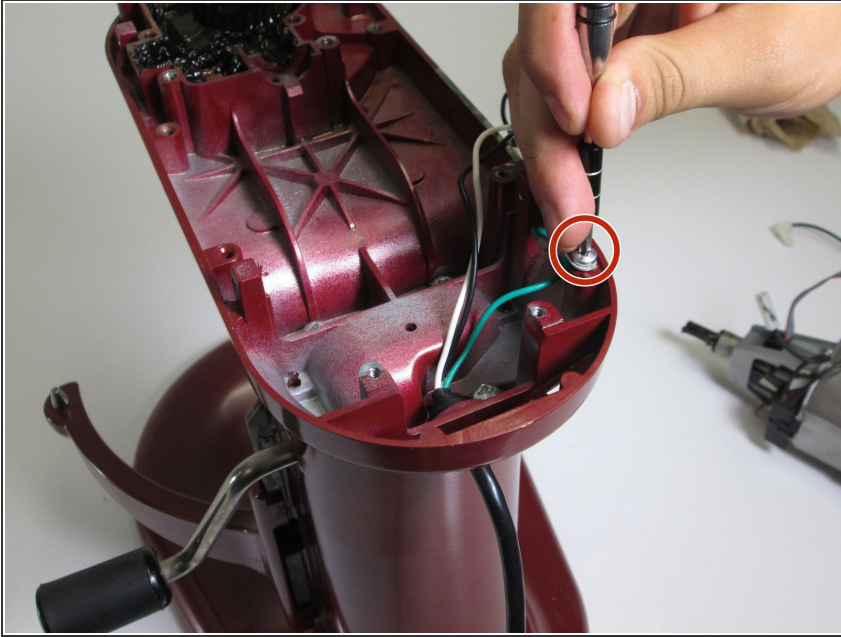
- Remove the two Phillips #2 screws holding the motor in place, located near the fan at the back of the motor.
- ⓘ The picture only shows one of the screws. The other screw is located on the exact opposite side of the motor.

## Step 8



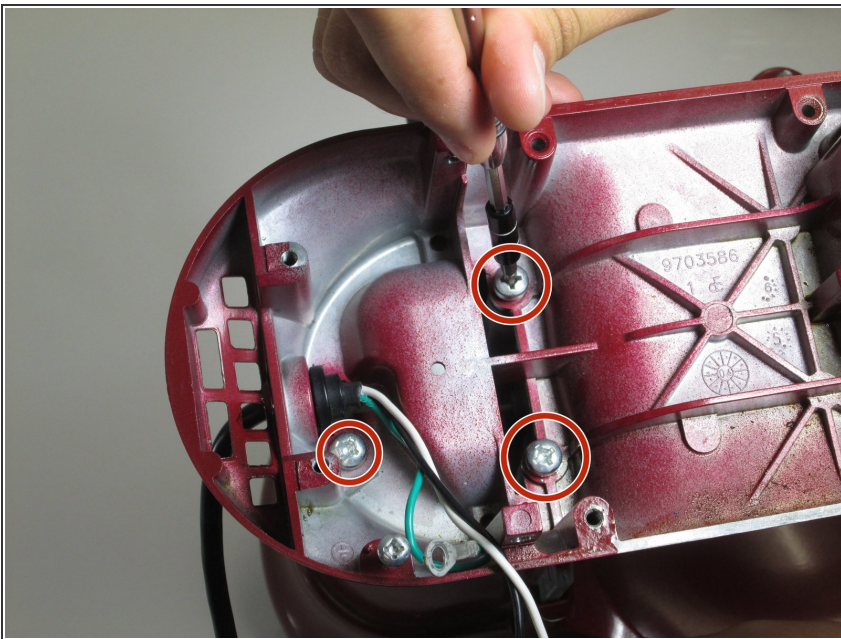
- Pull upward to remove the motor.

## Step 9 — Power Cord



- Remove the Phillips #2 screw attaching the green grounding wire to the frame of the mixer.

## Step 10



- Remove the three Phillips #2 screws that connect the top portion of the mixer to the "neck" of the mixer.



## Step 11



- Remove the top portion of the mixer from the "neck" of the mixer.
- ⓘ This will make removing the power cord much easier.

## Step 12



- You can now remove the power cord from the mixer.

To reassemble your device, follow these instructions in reverse order.