



# PlayStation 3 Super Slim Wi-Fi Antennas Replacement

Trouble with connecting to Wi-Fi? This guide will walk you through replacing your PS3's Wi-Fi antennas.

Written By: Joseph O'Connor



## INTRODUCTION

This guide will show the users how to remove the Wi-Fi antennas of the PlayStation 3 Super Slim. The step will show users how to remove the mounted antennas. After, the guide will go into the removal of the antennas' wires from the sockets on the motherboard.



### TOOLS:

- [Phillips #1 Screwdriver](#) (1)
- [iFixit Opening Tools](#) (1)
- [T8 Torx Security Bit Screwdriver](#) (1)



### PARTS:

- [PlayStation 3 Super Slim Wi-Fi Antennae](#) (1)

## Step 1 — Power Supply Unit



- Remove the side HDD bay cover by sliding the panel towards the back of the device.

**i** The bay cover is found on the right side of the device.

## Step 2



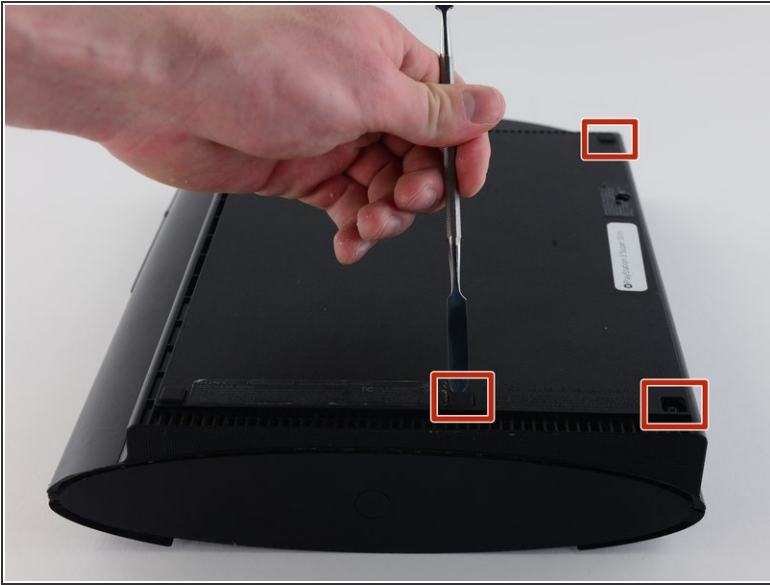
- Remove all three black 9.8mm long screws with a T-8 security screwdriver.
- Remove the blue 7.9mm long screw with a Phillips #1 screwdriver.

## Step 3



- Pull on the tab to remove the HDD.
- ⓘ The HDD should be removed and stored carefully to prevent damage to data.

## Step 4



- On the bottom of the device, pry out the three rubber foot covers with the metal spudger.
- Remove the four black 36.3mm long screws underneath with a Phillips #1 screwdriver.
- ⓘ One screw is located underneath the warranty sticker. This sticker can either be peeled off or punctured through with a screwdriver.

## Step 5



- On the top of the device, unlatch the hook on the furthest right beneath the front panel, lift the panel slightly and apply pressure.
  - Unlatch the second right-side hook by sliding a plastic opening tool in the marked area.
  - Slide the panel to the left to unlatch the rest of the hooks.
- i** This is probably the most difficult part of the procedure. If you cannot unlatch the hook on the front panel, you can attempt to pry all the hooks off. However, do this at your own risk, as these hooks break easily.

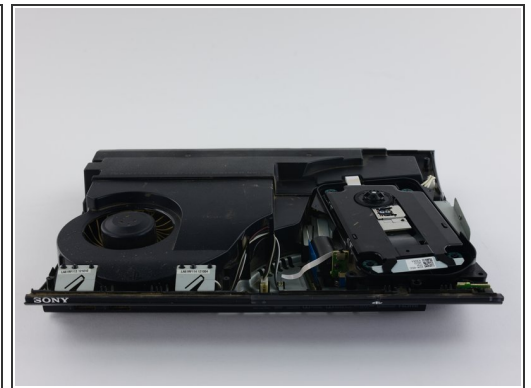
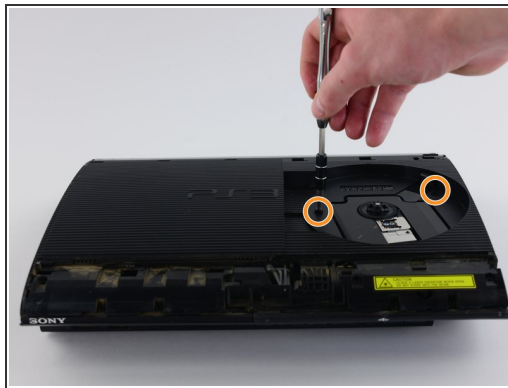


## Step 6



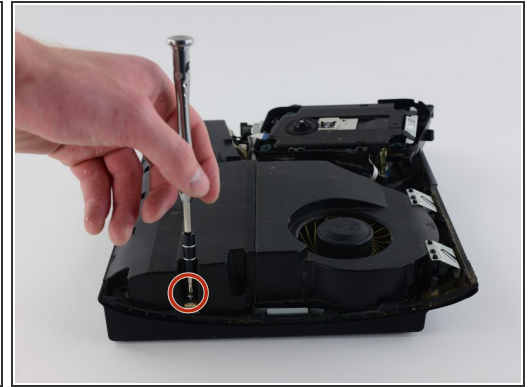
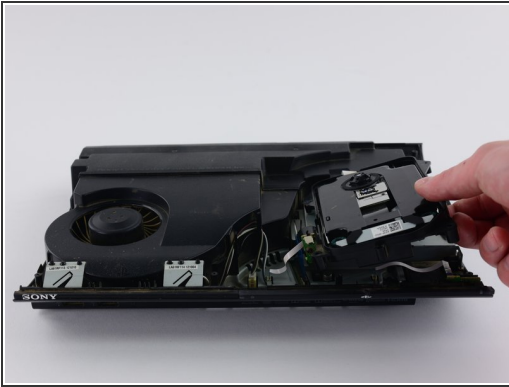
- Remove the back panel by pressing down the tab on the right side of the device, and sliding the panel to the left.

## Step 7



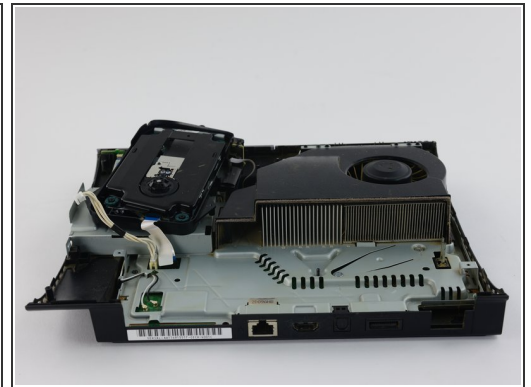
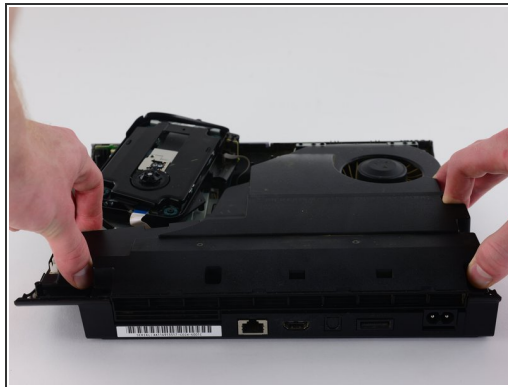
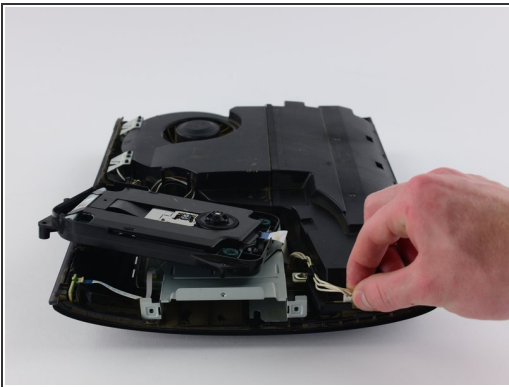
- Remove the five silver 20.8mm long screws with a Phillips #1 screwdriver.
- Remove the two black 9.9mm long screws in the disc reader with a T-8 security screwdriver.
- Remove the top black plastic shell.

## Step 8



- Move the optical drive to the side to reveal one of the silver 8.8mm long screws.
- Remove the two silver 8.8mm long screws on either side with a Phillips #1 screwdriver.

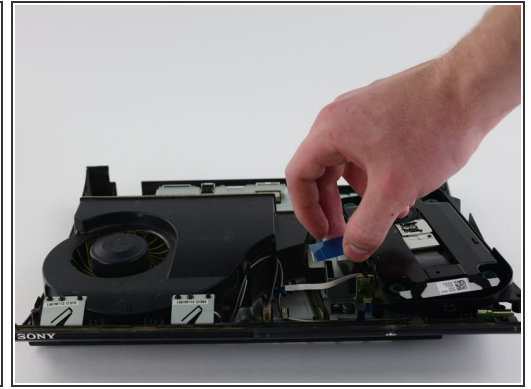
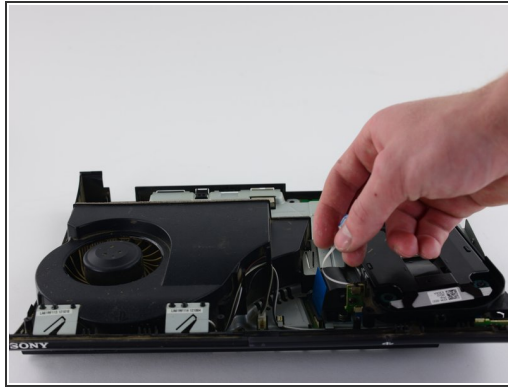
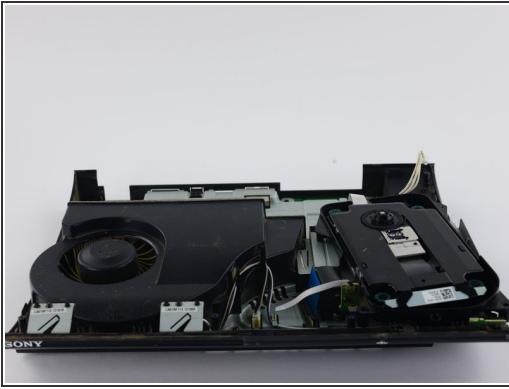
## Step 9



- Remove the cable from the plug and remove the wires from the two plastic hooks.
- ⚠ When removing the cable from the plug, pull on the plastic male connector, not on the wires.
- Remove the power supply unit.

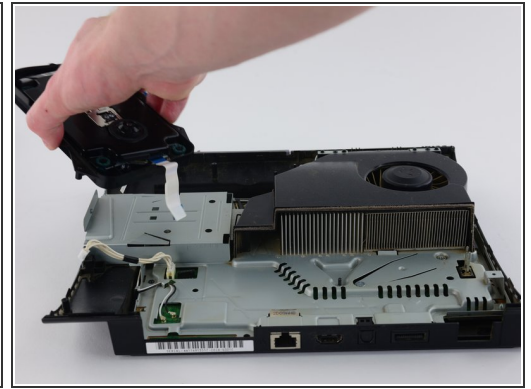
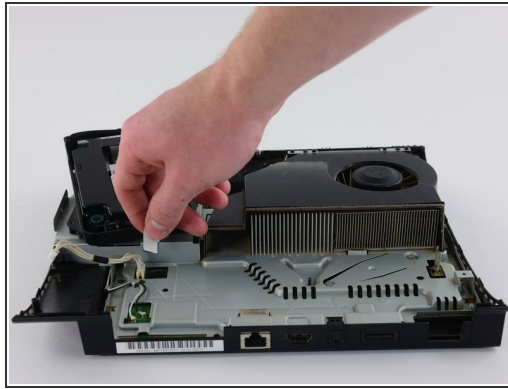
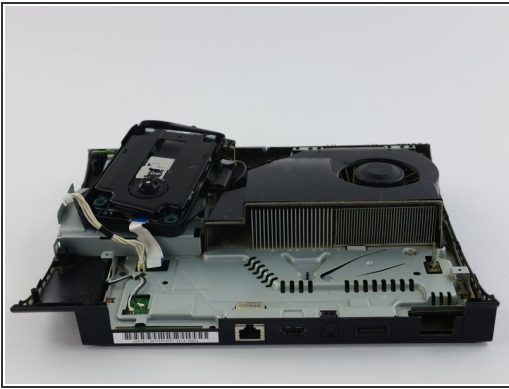


## Step 10 — Optical Drive



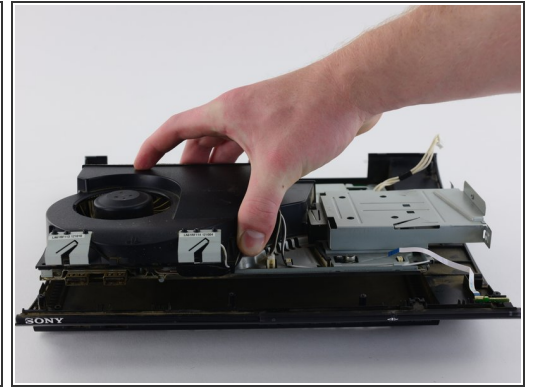
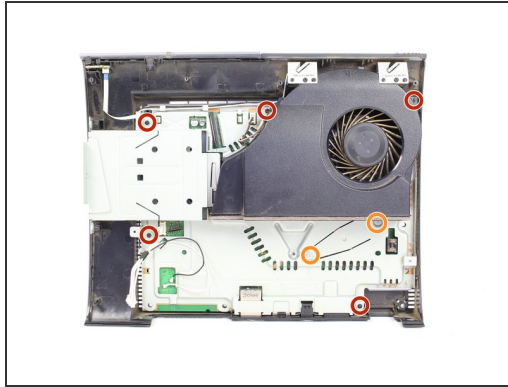
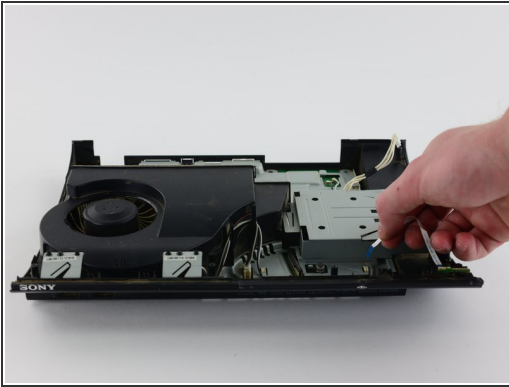
- Remove the front white flex-ribbon cable by pulling upward from its base.
- Remove the black and blue flex-ribbon cable behind it by pulling upward on the black tab, then pulling out the cable.

## Step 11



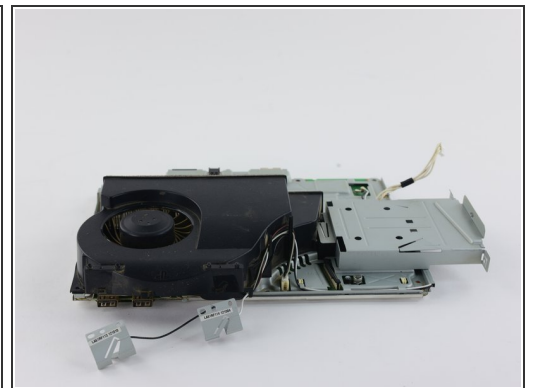
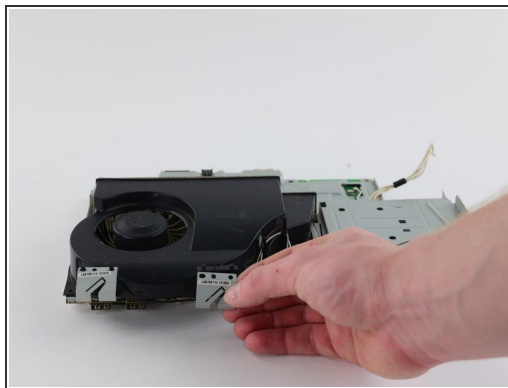
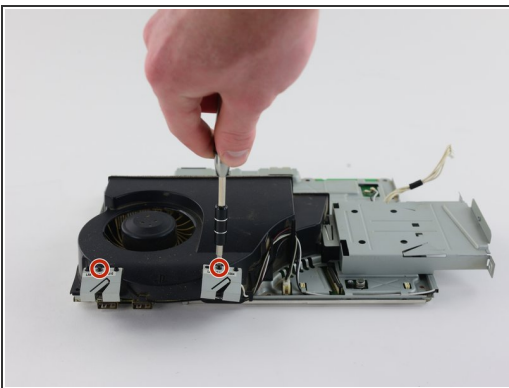
- Rotate the device 180 degrees.
- Remove the back white flex-ribbon cable by pulling upward from its base.
- Remove the optical drive.

## Step 12 — Wi-Fi Antennas



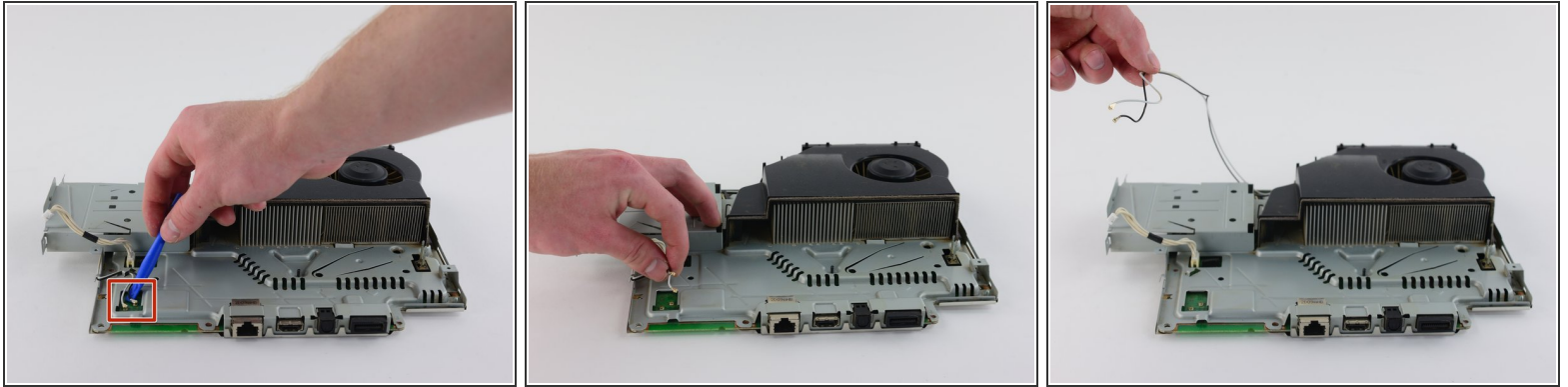
- Locate the white flex ribbon cable that connects the power button to the motherboard. Pull this cable out from the motherboard end.
- Remove the five black 8.3mm long screws with a Phillips #1 screwdriver.
- Remove the two silver 12.8mm long screws with a Phillips #1 screwdriver.
- Remove the device from the bottom shell casing.

## Step 13



- Remove the two black 8.3mm long screws with a Phillips #1 screwdriver from the Wi-Fi antennas.
- Lift the Wi-Fi antennas off their mount.

## Step 14



- Use a plastic opening tool to remove the Wi-Fi wires from their sockets on the motherboard.
- Remove the wires from the hooks around the motherboard and fan cover to completely remove the antennas.
- ⓘ The Wi-Fi antennas' ports are labeled B and W on the motherboard for reassembly.
- ★ To insert your new Wi-Fi antennas, insert the wires of your replacement Wi-Fi antennas into each socket, feed the wires through the hooks, and install the antennas on their mount.

To reassemble your device, follow these instructions in reverse order.