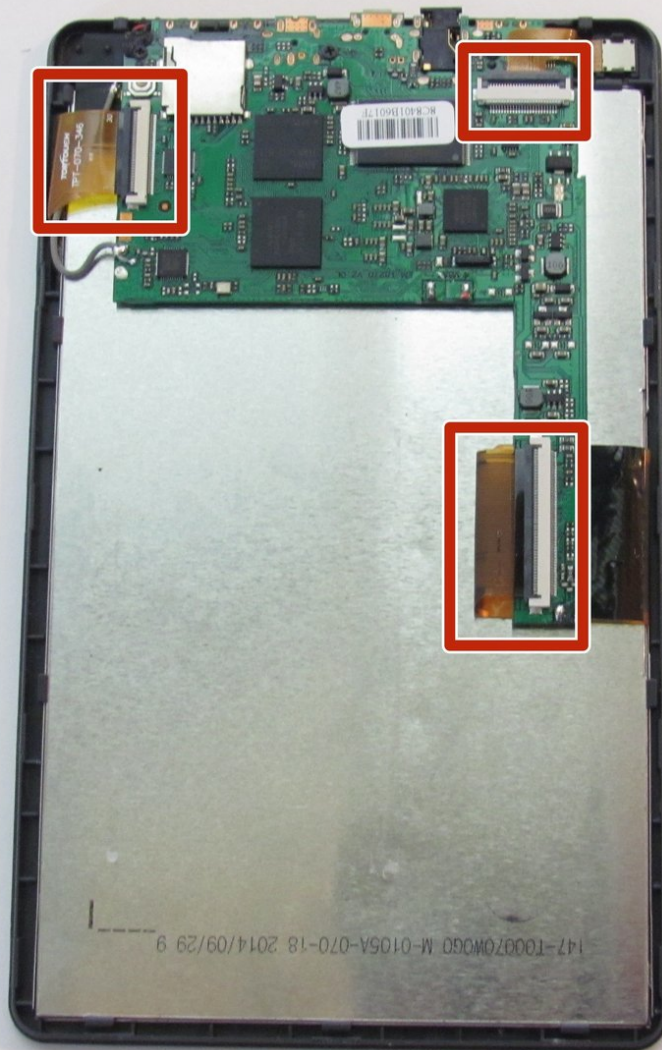




RCA RCT6773W22 Motherboard Replacement

This guide will illustrate how to remove the motherboard.

Written By: Kelsea Weber



INTRODUCTION

This guide will illustrate how to remove the motherboard.



TOOLS:

- [Phillips #000 Screwdriver](#) (1)
 - [iFixit Opening Tools](#) (1)
 - [Portable Soldering Iron](#) (1)
-

Step 1 — Battery



- Remove the two 5mm screws from the bottom of the device using a Phillips #000 screwdriver.

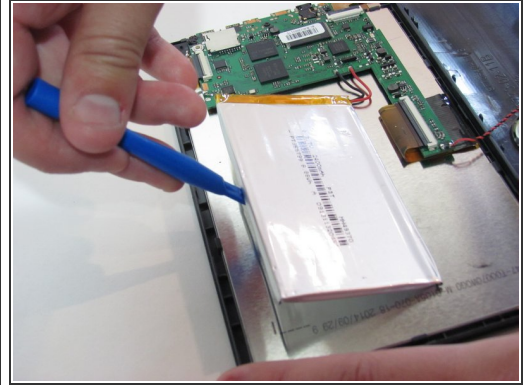
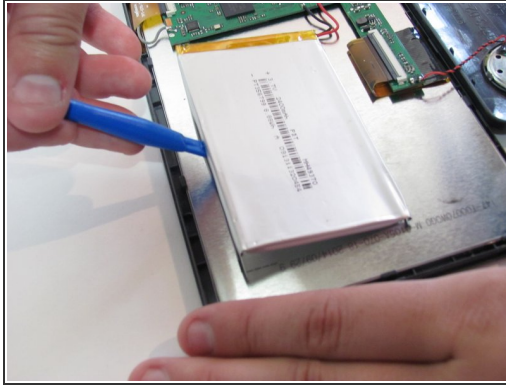
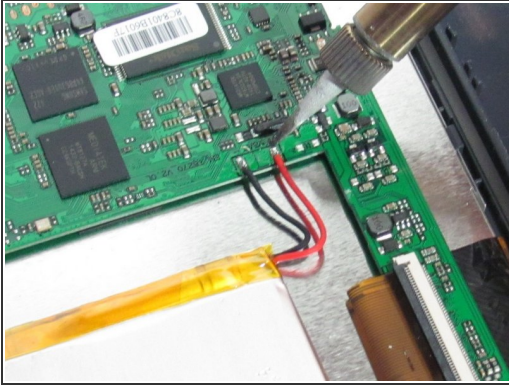
Step 2




- Place the plastic opening tool between the case and the screen.
- Slide the tool clockwise around the case until all the clips are removed.

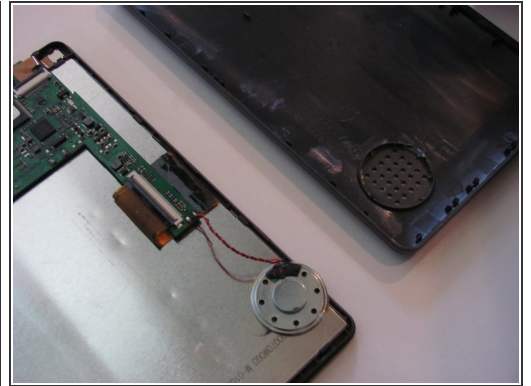
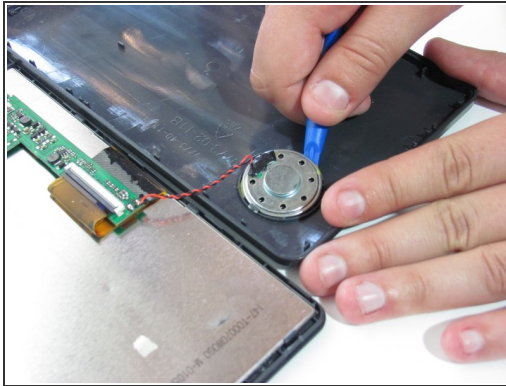
⚠ Do not completely separate the case from the screen because there is a wire connecting the motherboard to the speaker.

Step 3



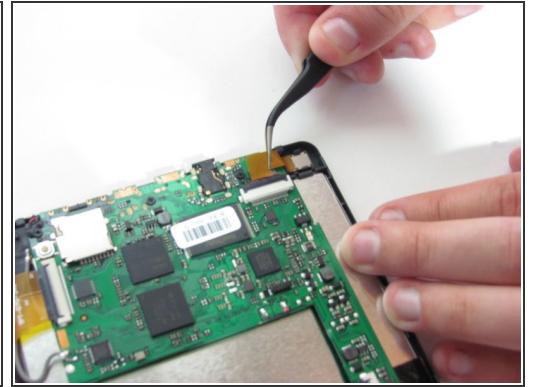
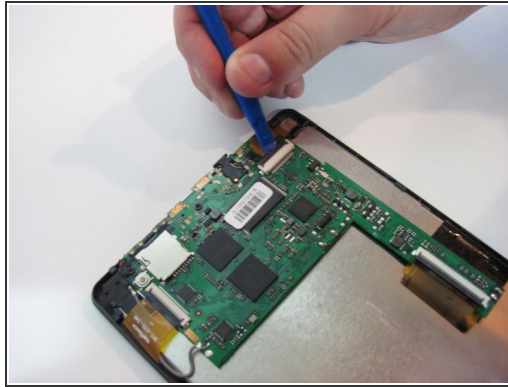
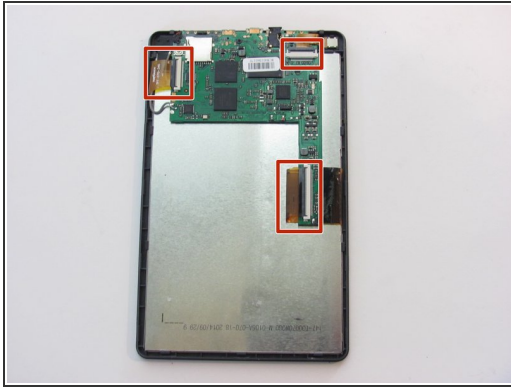
- Desolder the two wires that connect the battery to the motherboard.
-  Learn more about soldering with this [soldering technique guide](#).
- Using the blue plastic opening tool, lift the battery away from the device.

Step 4 — Speaker



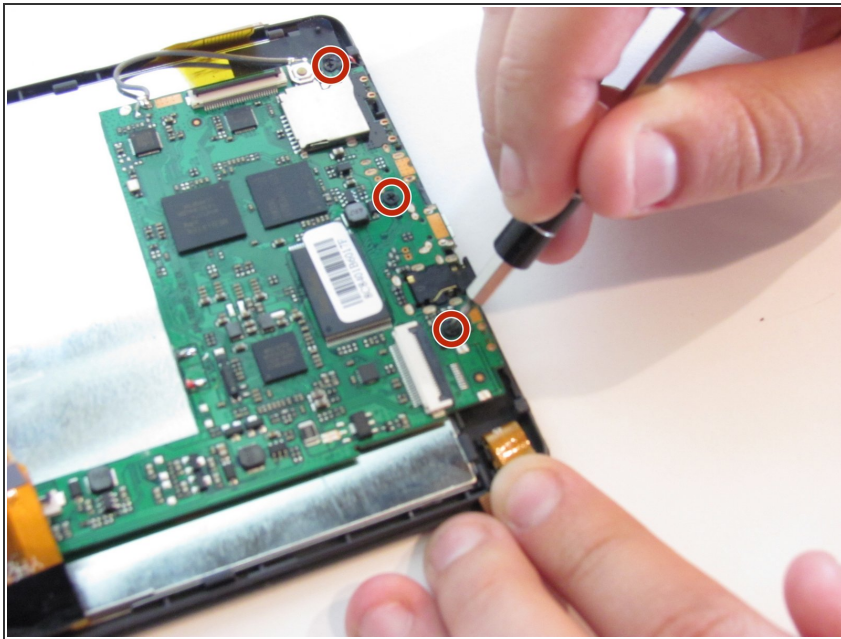
- Desolder the wire connected from the speaker to the motherboard.
- Pry the speaker from the casing with a plastic opening tool.

Step 5 — Motherboard



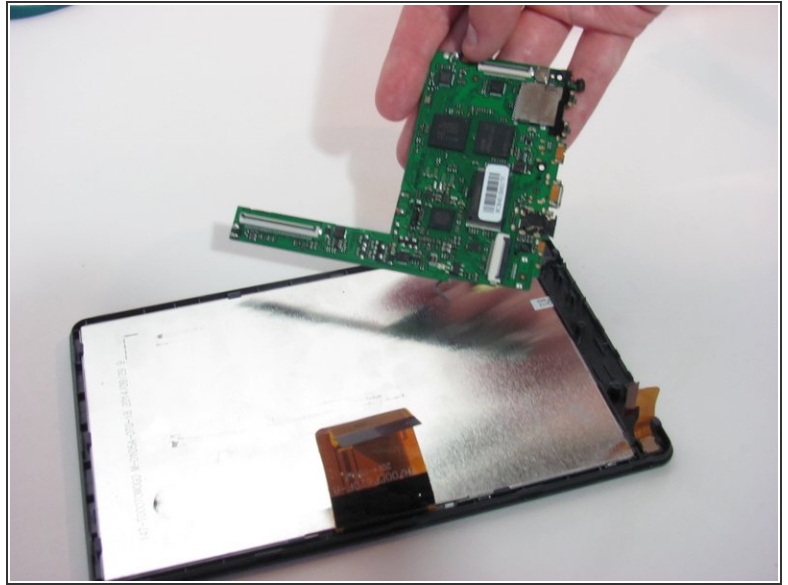
- Use the spudger to lift up the black tab on all three ZIF connectors.
- Use tweezers to remove the ribbon cables from the zift connectors.

Step 6



- Use Phillips #000 screwdriver to remove the three 3mm screws on the motherboard.

Step 7



- Use a spudger or plastic opening tool to lift up the motherboard.

To reassemble your device, follow these instructions in reverse order.