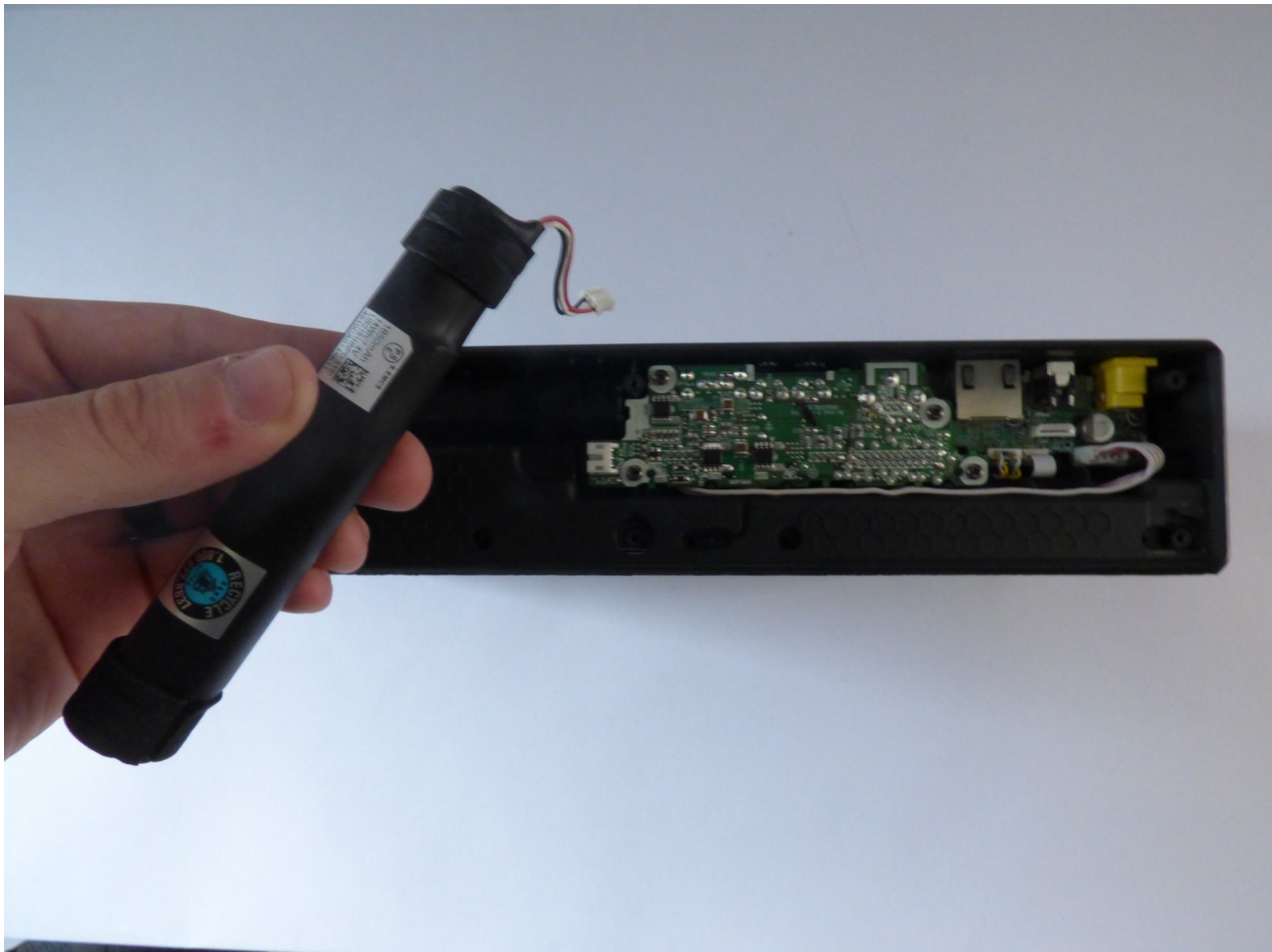




# Sony SRS-X7 Power Supply Replacement

Use this guide to replace the power unit in your device.

Written By: Tyler Lamar



## INTRODUCTION

The power unit is obviously what powers your device. Without this you cannot use the device at all whatsoever.

Use this guide to uninstall the power unit from your device, then follow it in reverse order to install the new part.



### TOOLS:

- [Pro Tech Toolkit](#) (1)




### PARTS:

- [Sony SRS-X7 Power Supply](#) (1)

## Step 1 — Power Supply





 For this guide, the faceplate disassembly is not necessary.

- On the bottom of the device, you'll see 4 rubber pieces at the corners. Peel off these rubber pieces.
- Unscrew the 4 10mm Philips J1 screws beneath them.

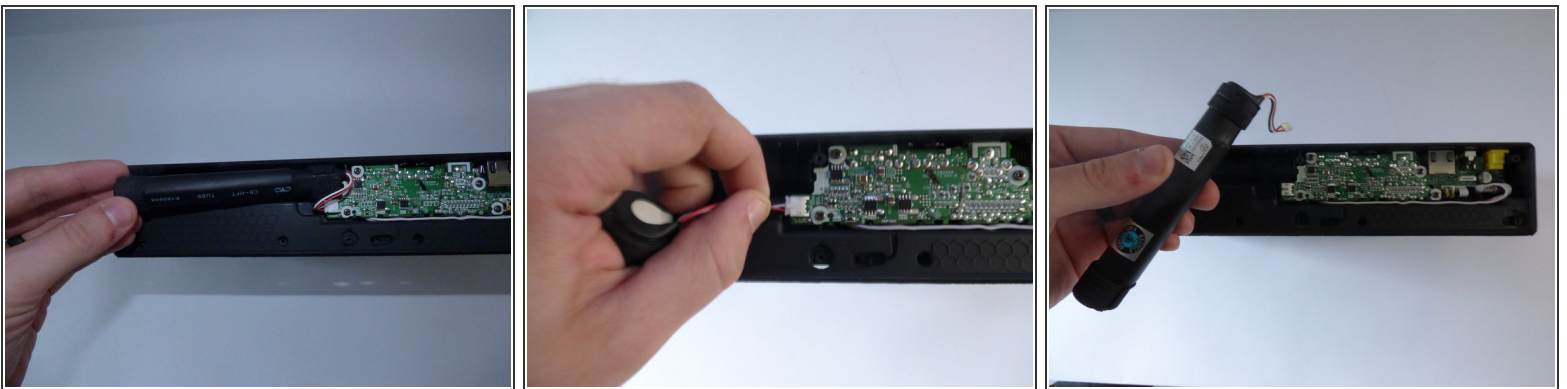
## Step 2



 The black stickers between the 4 foam pieces are there to protect the unit's warranty. If you try to send the device back to Sony after poking through said stickers, they will not accept it as the device has been tampered with.

- Poke through said stickers and unscrew the 2 10mm Philips J1 screws beneath those.
  - Insert the blue plastic tool into the corner of the bottom faceplate and slide along the edge.
-  It will be a bit difficult as there is adhesive holding the faceplate to the unit, but with a bit of playing it should come off with ease.

## Step 3



- Remove the power supply. Be careful as the power supply is still connected to board.
- Unplug the power supply from the small motherboard as shown.