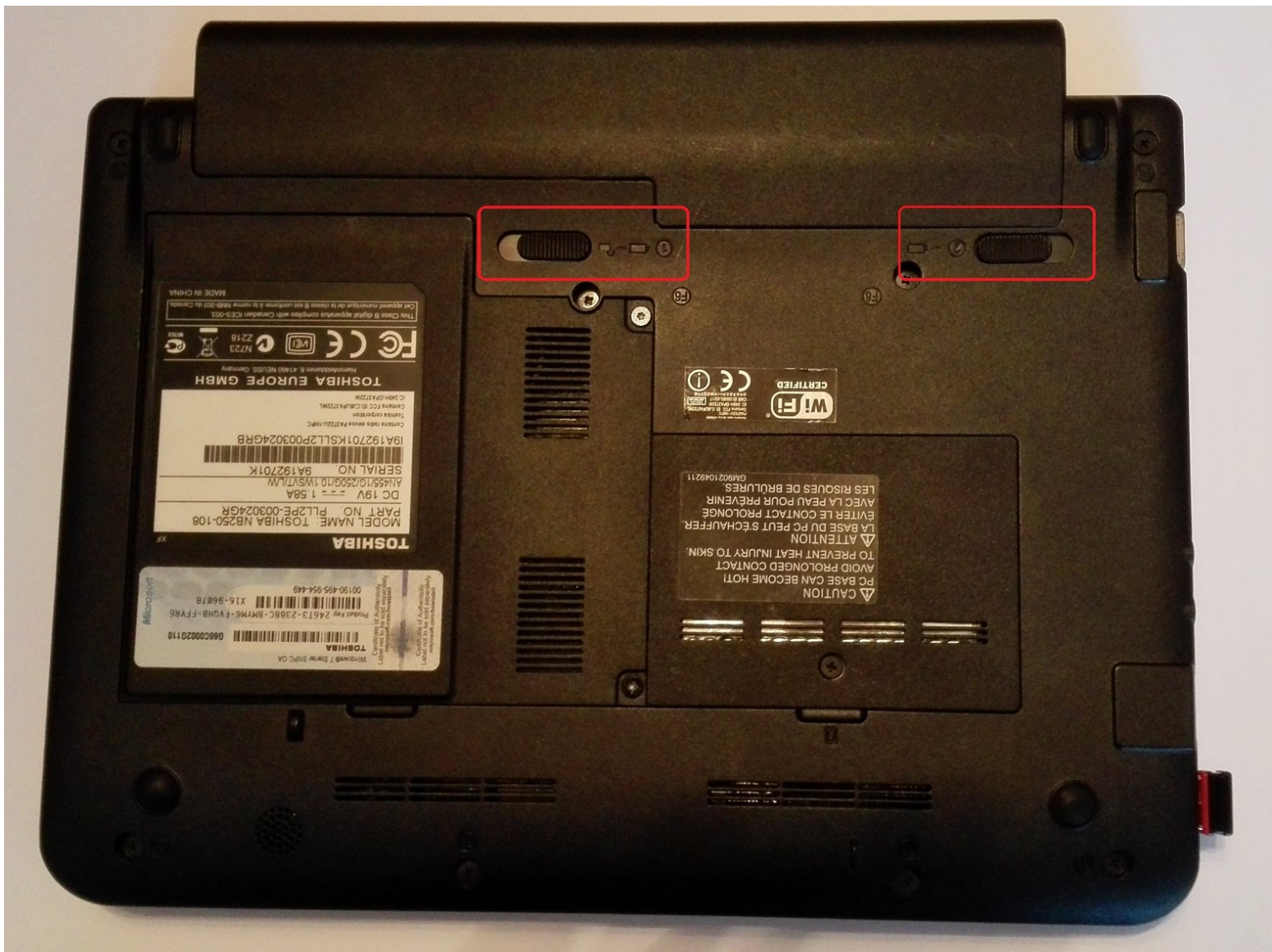




Toshiba NB250-108 Wlan Karte Replacement

Exchange of the wifi card

Written By: Guenter Hildebrandt



INTRODUCTION

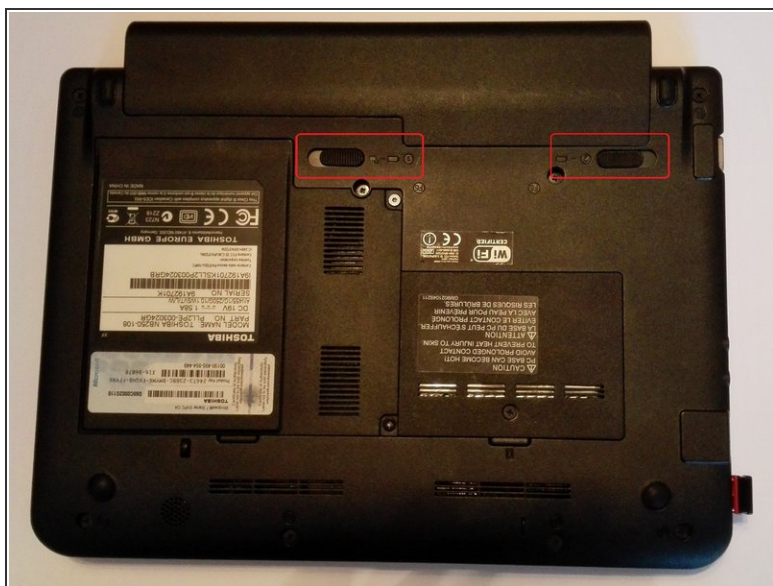
Exchange of the wifi card



TOOLS:

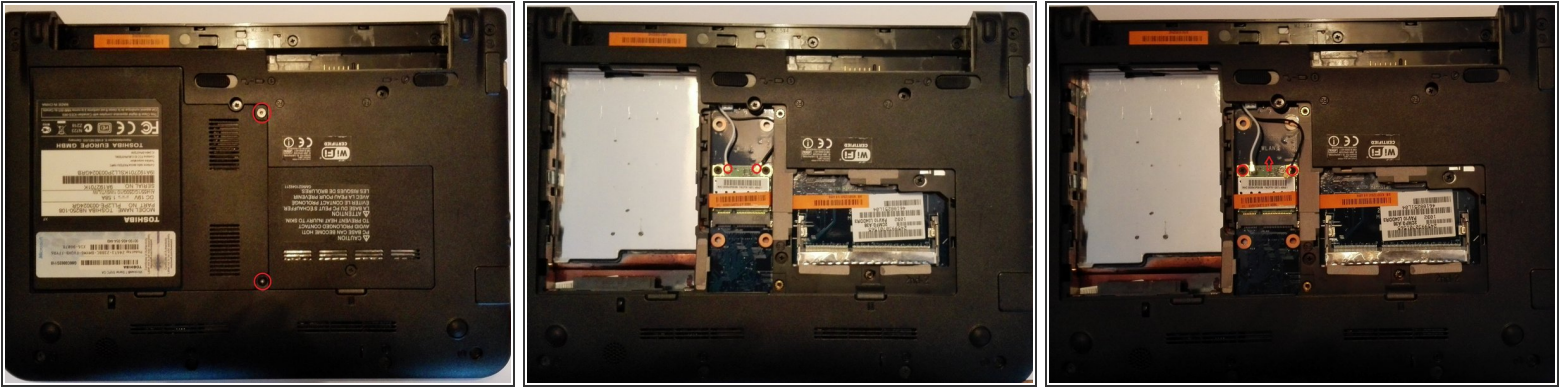
- [New Item](#) (1)
 - [New Item](#) (1)
-

Step 1 — Remove the battery



- Save your work.
- Turn off the computer. The LED Power must not light up anymore.
- ⚠ Disconnect all cables and devices connected to the computer.
- Close the screen and place the computer face down as shown in the picture.
- Slide the safety latch (on the left side of the picture) to the unlocked position (to the left) to activate the release.
- Slide the battery release (pictured on the right) to the right side and hold it to release the battery and remove the battery from the back of the computer.

Step 2 — Remove WLAN card



- Now remove the two screws (T6 Torx) of the hard drive and wireless card cover.
- Remove the cover by lifting and pulling lightly on the right side.
- Disconnect the gray and black wires from the top of the wireless card by pulling them up with fingernails.
- Remove the 2 black screws (Phillips # 1) which hold the card in place. Now pull the WLAN card upwards in the direction of the battery out of the slot. Place the wifi card securely on your desktop

Repeat the steps in order to reassemble your device.