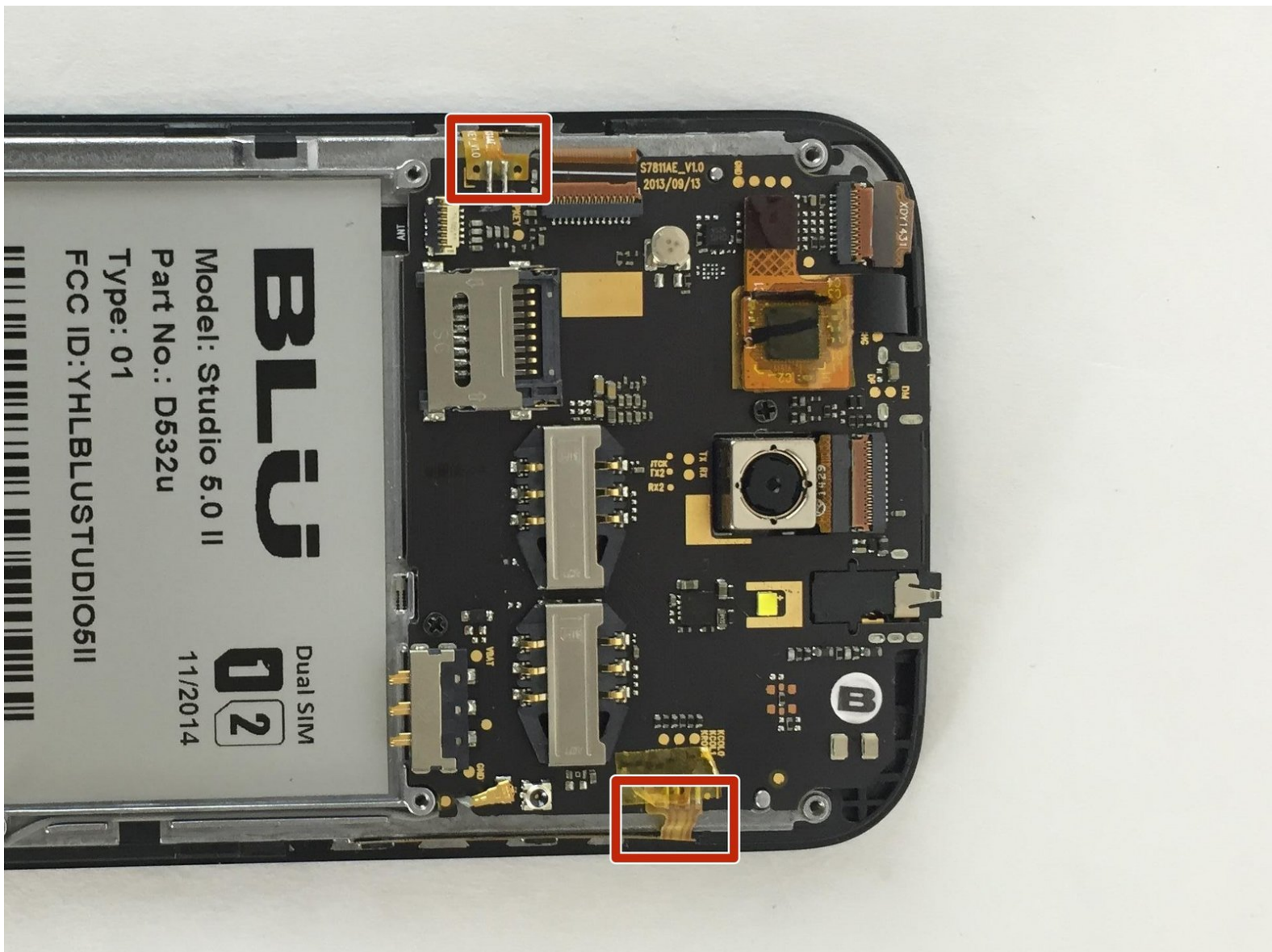




# BLU Studio 5.0 II Motherboard Replacement

Use this guide to replace the motherboard.

Written By: Ricardo Sarabia



---

# INTRODUCTION

This guide will show you how to successfully remove the motherboard from your BLU Studio 5.0 II.

---



## TOOLS:

- [Phillips #00 Screwdriver](#) (1)
  - [Spudger](#) (1)
-

## Step 1 — Battery



- ⚠ Turn off your phone before disassembling the device.
- Locate the small opening on the bottom corner of the back case.

## Step 2



- Use your finger to open the back case by slowly pulling it on the open slot.
- Once the case is lifted on the corner, slide your finger along the edge of the phone to remove the rest of the case.

### Step 3



- Locate the opening slot at the bottom of the battery.
- Use your finger to lift the battery and remove it from the case.

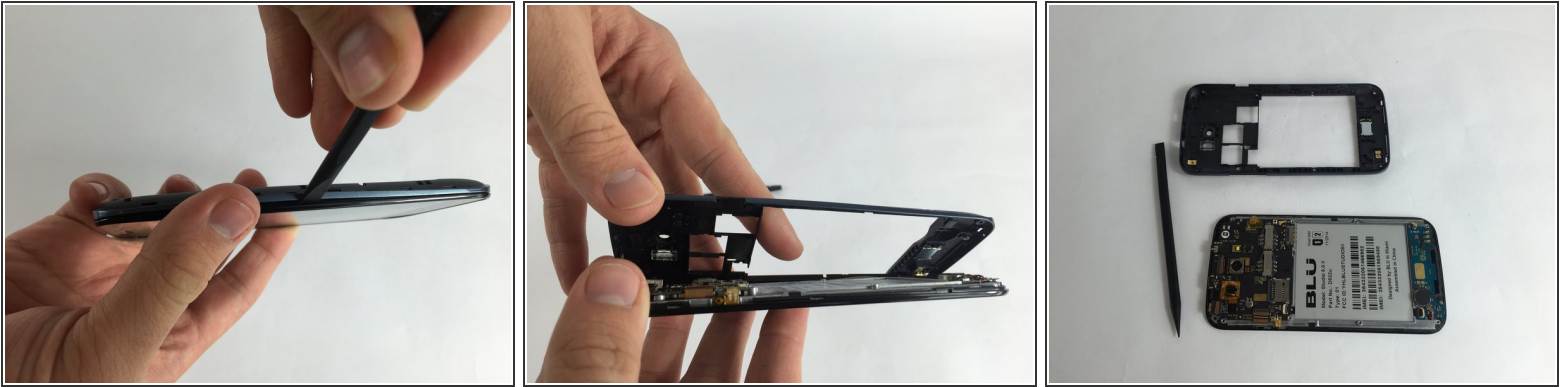
### Step 4 — Back Case



- Locate the four 3mm screws on each side of the back panel.
- Use a Phillips #00 screwdriver to remove the eight screws.

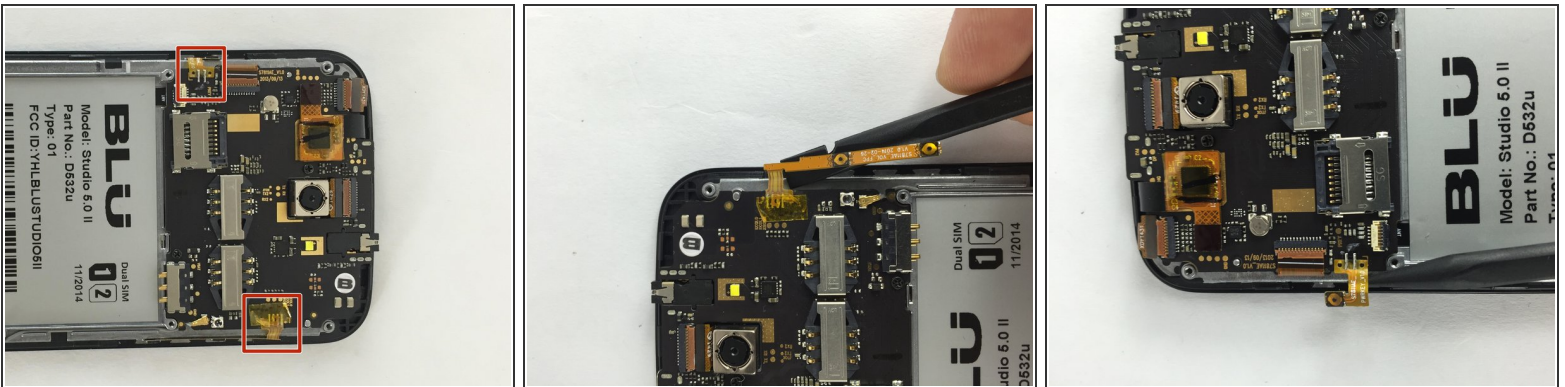


## Step 5



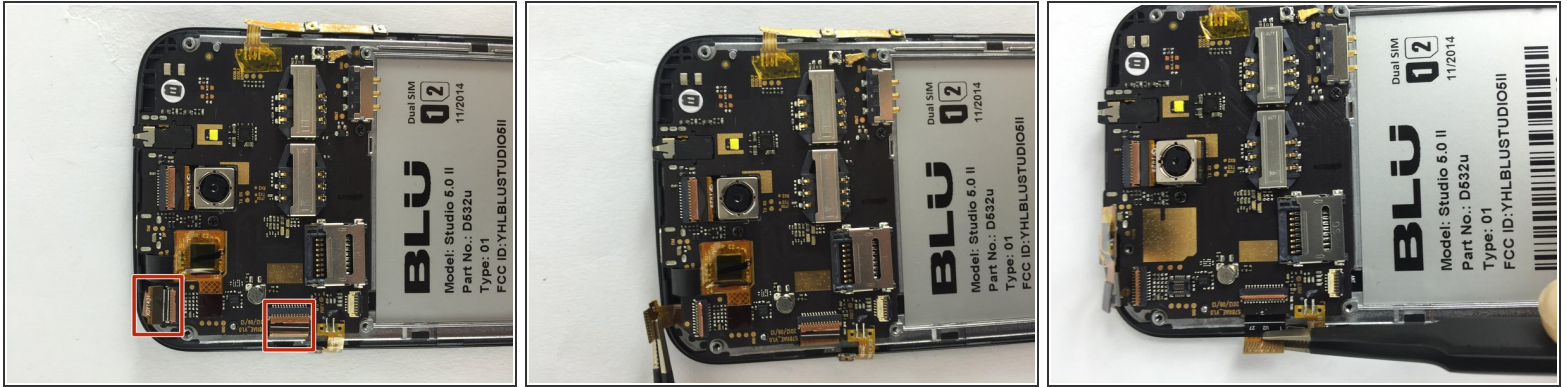
- Carefully use a spudger to start opening the back case by inserting it between the black and blue lines on the side of the phone.
- With the help of your fingers, continue to remove the back case by sliding it through the opening.

## Step 6 — Motherboard



- Locate the following adhesive buttons on the right and left side of the motherboard. These are the volume and power buttons.
- Use a spudger to carefully separate them from the circuit board.

## Step 7



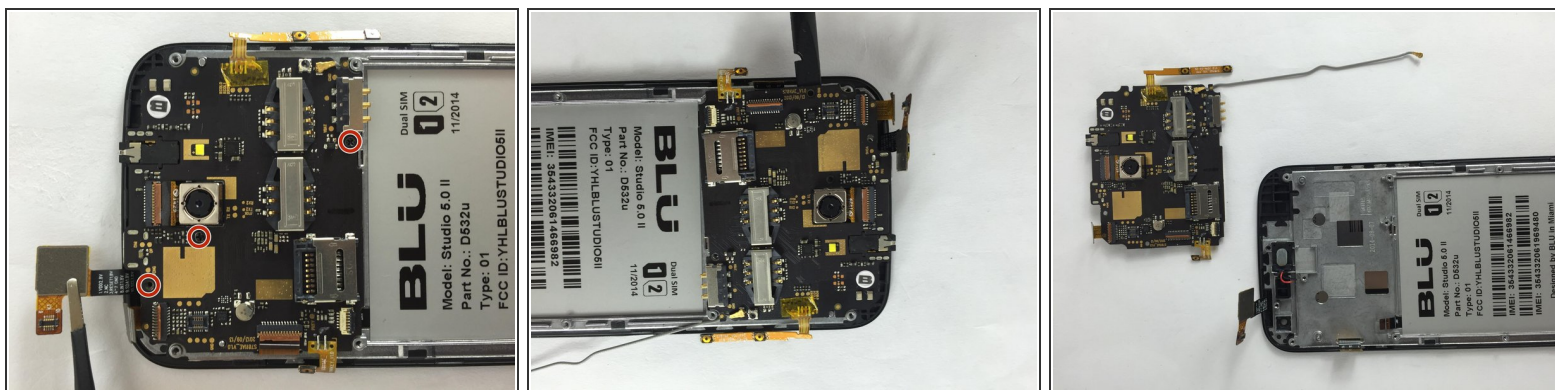
- Locate these two ZIF connectors on the top and left side of the motherboard.
- Use a spudger to flip up and unlock the black tab on the connector.
- Use tweezers to pull the ribbon cables out of their connectors.

## Step 8



- Locate the indicated connector on the top side of the motherboard.
- Use a pair of tweezers to gently lift the connector from the circuit board.

## Step 9



- Remove the three 3mm screws on the motherboard using a Phillips #00 screwdriver.
- Use a spudger or tweezers to carefully lift and remove the motherboard.

To reassemble your device, follow these instructions in reverse order.