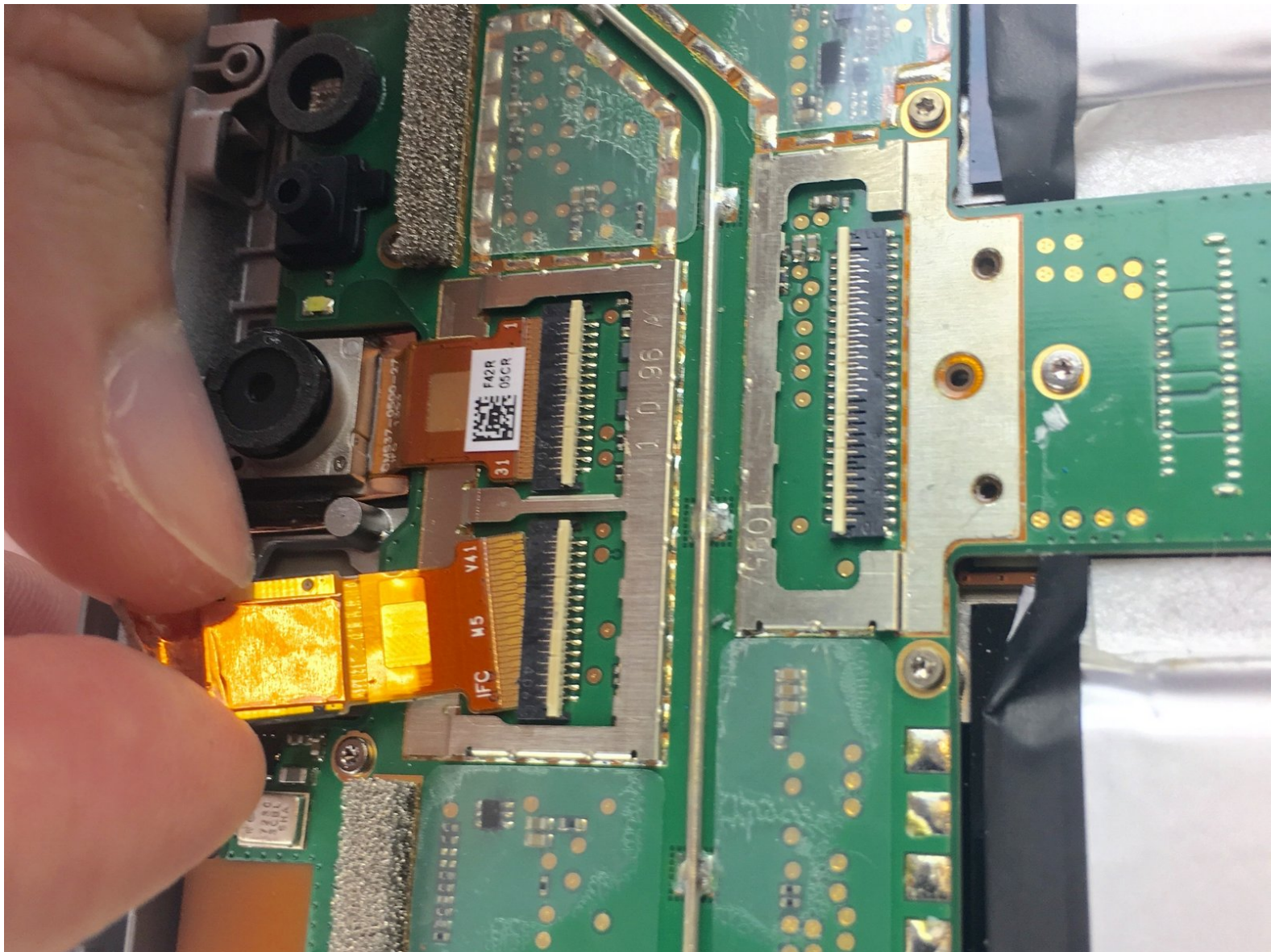




# Microsoft Surface 2 Front Facing and Rear Facing Camera Replacement

Replace the front-facing and rear-facing cameras on the Microsoft Surface 2.

Written By: Austin Ribickas



## INTRODUCTION

You may need to remove the front or back cameras if they have been damaged due to a fall or there seems to be some other problem. When removing the cameras from their respective connections, be sure to pry up on the retaining flap and not the connection itself.



### TOOLS:

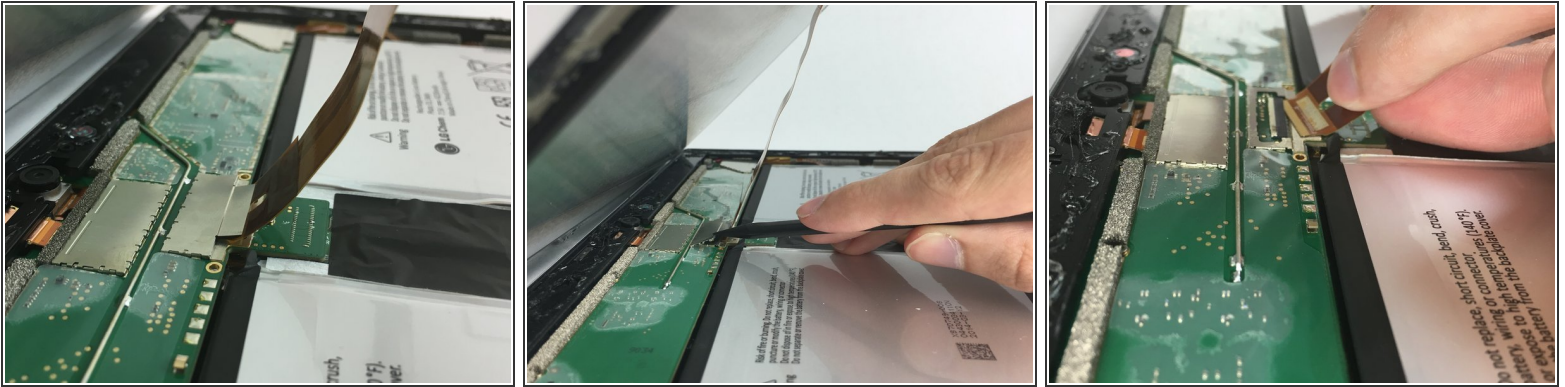
- [Heat Gun](#) (1)
  - [iOpener Kit](#) (1)
  - [Heavy-Duty Spudger](#) (1)
  - [Screwdriver](#) (1)
  - [Magnetic Project Mat](#) (1)
  - [Tweezers](#) (1)
-

## Step 1 — Screen



- Begin by using a heat gun or the iOpener (This will take longer.) to melt the adhesive all around the outer edge of the screen.
- ⚠ Avoid holding the heat gun too close to the Microsoft Surface 2 so as to not cause any unwanted warping.
- ⚠ Avoid touching the metal end of the gun. It will be very hot and can burn you.
- Insert the opening picks just under the screen and black edging. Be sure to place them evenly on each side.
- Using the gap created by the picks, slowly pry the screen from the body of the Microsoft Surface 2 with a plastic opening tool. Pry as uniformly as possible.

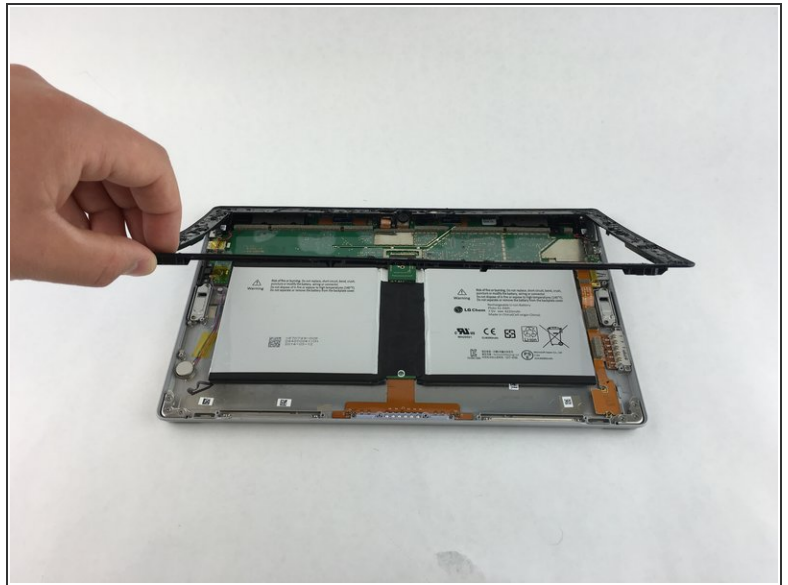
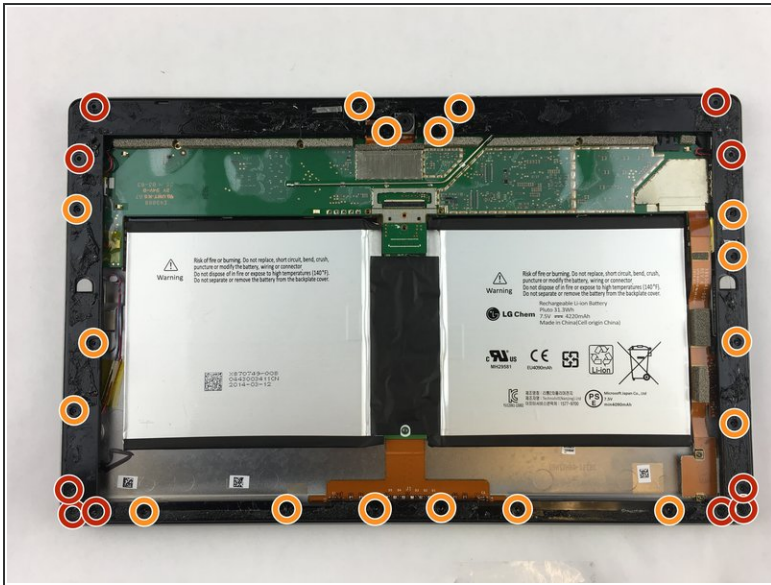
## Step 2



- ① Once the screen is free from the body, there will be a single ribbon cable connecting the screen to the motherboard.
- Use a plastic spudger to pry the retaining clip away from the display cable.
- ① The ribbon cable may be glued to the motherboard.
- Carefully pull the ribbon cable from its socket on the motherboard.



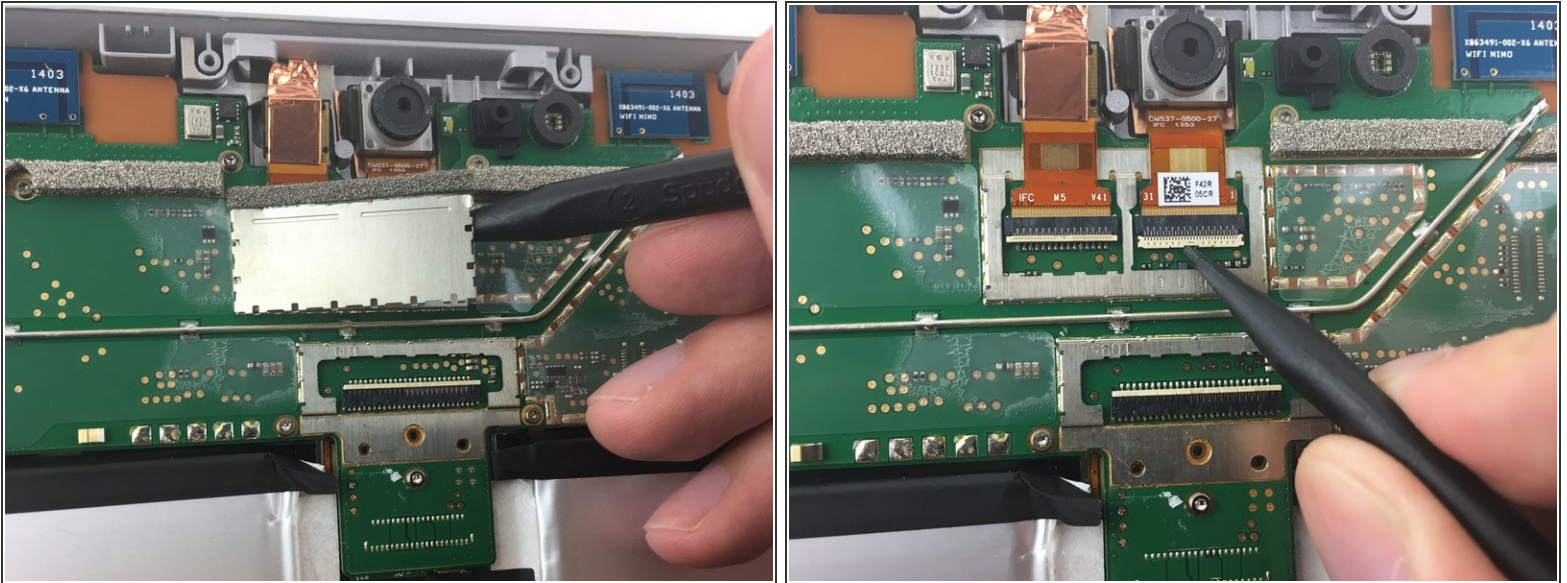
## Step 3 — Front Facing and Rear Facing Cameras



 Work close to Magnetic Project Map to avoid losing screws.

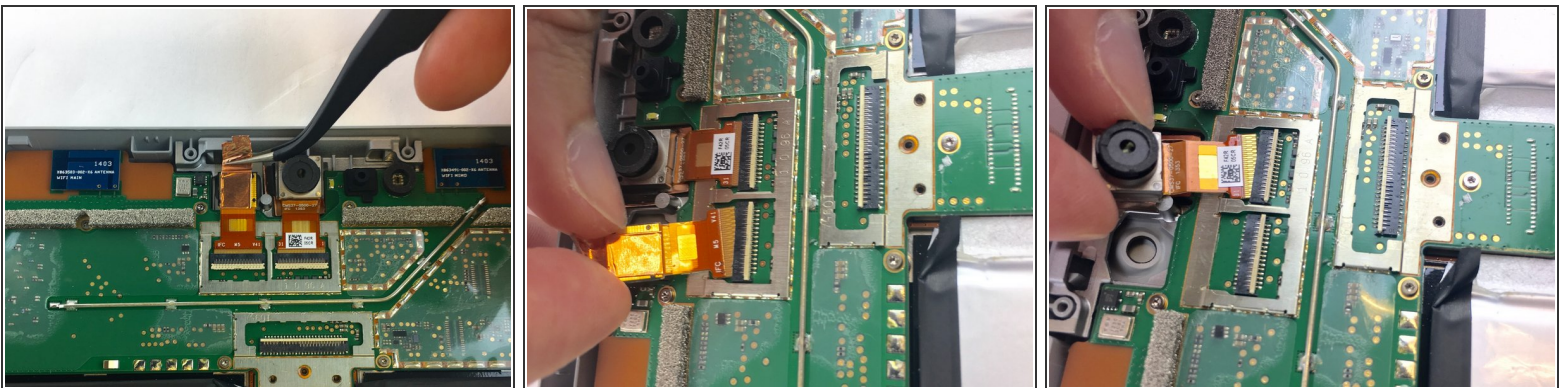
- Remove ten 3.45 mm T3 screws from the corners of the black plastic bezel.
- Remove the remaining seventeen 4.4 mm T5 screws from the perimeter of the bezel.
- Once all screws have been removed, lift and remove the bezel from the rest of the device.

## Step 4



- Use a spudger to pry up the retaining clip covering the camera ribbon cables.
  - ⓘ The retaining clip may be glued to the motherboard.
- Use the spudger to flip up the small retaining flap on the zero insertion force connector.
  - ⚠ Make sure you are prying up on the retaining flap, not the connector itself.

## Step 5



- Carefully peel away the copper holding the rear-facing camera in place.
- Carefully pull the rear-facing or front-facing camera from its ZIF connector.
  - ⓘ No force is needed to plug in or remove the ribbon cable.

To reassemble your device, follow these instructions in reverse order.