



HP Stream 11-d020nr Lid Replacement

This guide will walk you through the process of...

Written By: Spenser Mason



INTRODUCTION

This guide will walk you through the process of removing the lid from an HP Stream 11 laptop. This should take you about 10-15 minutes. This is a fairly simple device. Make sure to use caution when you remove the wires so you don't damage them or the components they are attached to.

TOOLS:

[Spudger](#) (1)

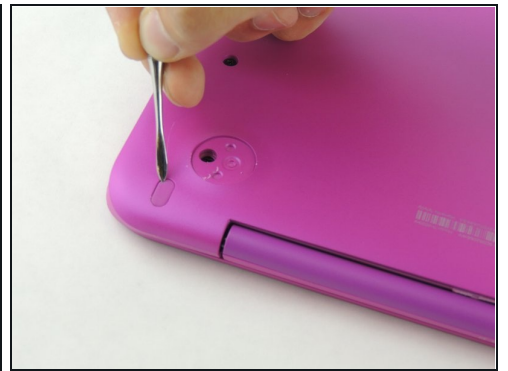
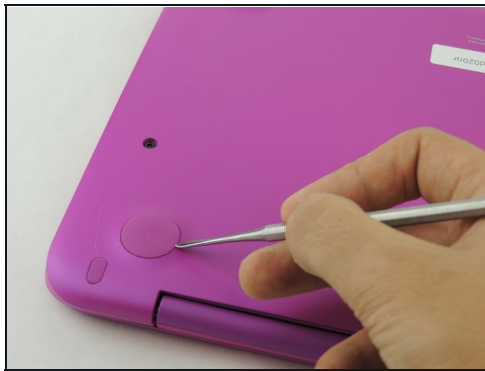
[iFixit Opening Tool](#) (1)


[Metal Spudger Set](#) (1)

[Screwdriver](#) (1)

[Tweezers](#) (1)

Step 1 — Lower Case



 Before disassembly, unplug and power off the Stream 11.

- Pry off the two elliptical rubber inserts (one in each corner).
- Pry off the two circular rubber inserts below the removed elliptical inserts (one in each corner).

Step 2



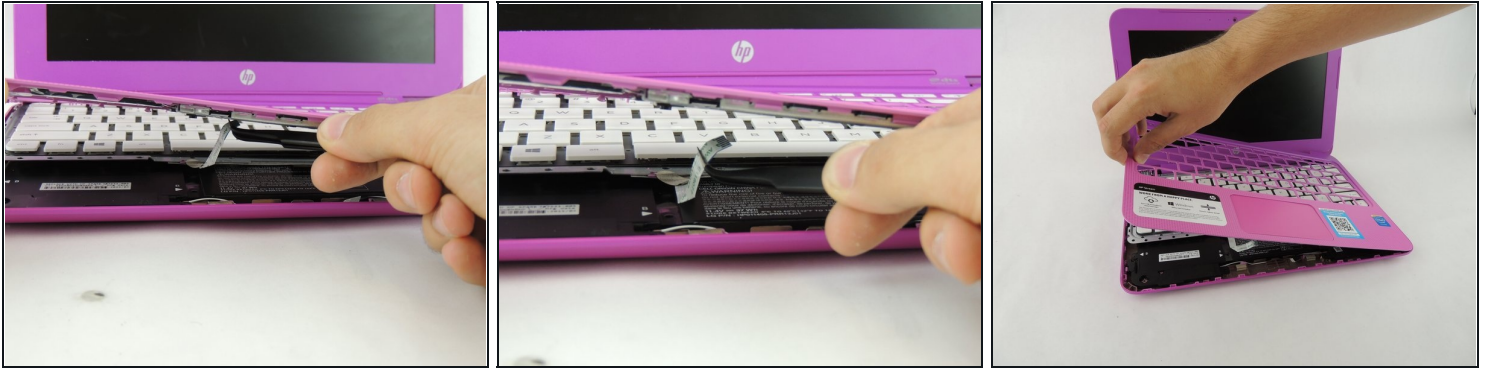
- Remove the eleven 5.6 mm Phillips #00 screws.

Step 3



- Turn the computer upright and lift the screen.
- Carefully use a spudger to pry the plastic keyboard cover from the base.
 - ⚠ When using the metal spudger, be careful not to press into the components underneath the keyboard cover. If possible, use a standard spudger or plastic opening tool to remove the keyboard cover.
- Work the spudger around the cover to release the clips attaching the cover to the base.
- ① Be patient when removing the cover, as there are many clips and it may take some time.

Step 4



- Disconnect the cable connecting the ClickPad to the base.
- Remove the plastic keyboard cover.

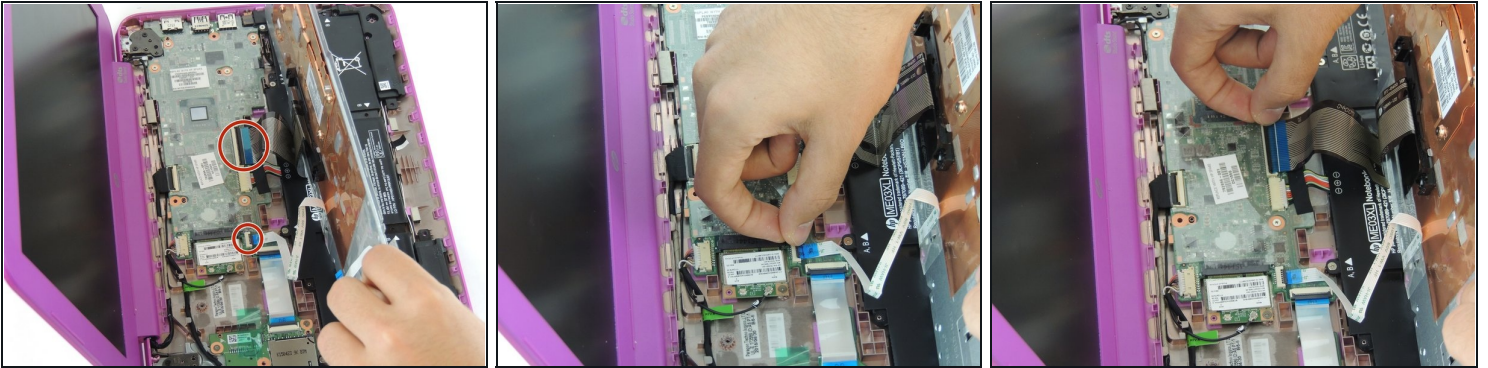
⚠ The cover is attached to the ClickPad by a cable. Be careful not to lift the cover too far so you do not damage this cable.

Step 5 — Keyboard



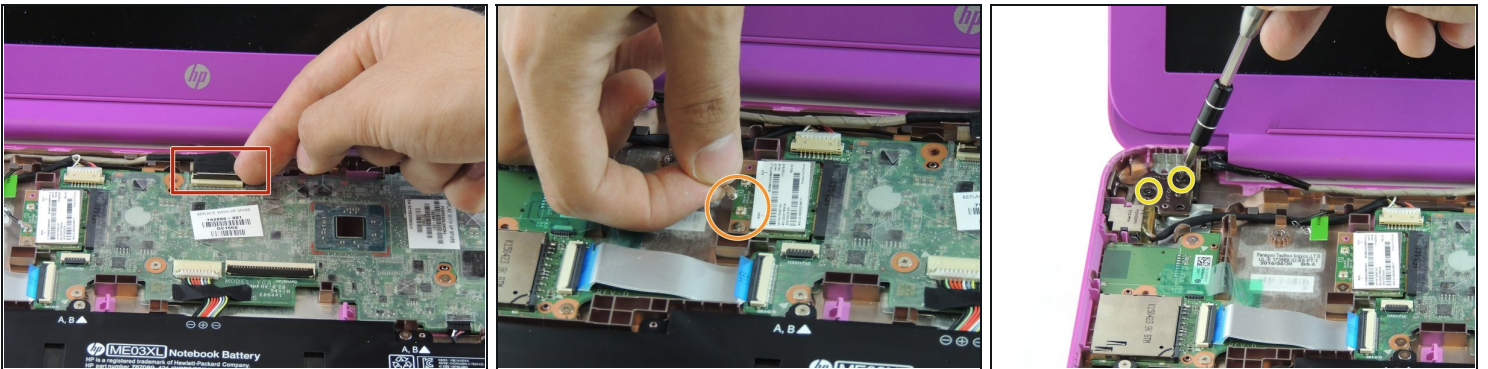
- Tilt the top of the keyboard plate up until you separate it from the base.
- Tilt the keyboard toward you slowly but **do not remove it**, it is still connected with ribbon cables.

Step 6



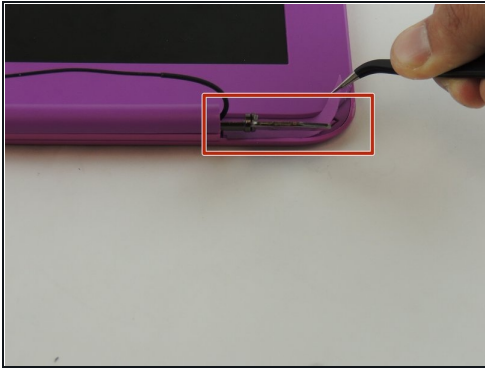
- Lift up the retaining flaps on the ZIF connectors securing the two keyboard ribbon cables.
- After disengaging the connectors, gently unplug both ribbon cables.

Step 7 — Lid



- Lift the black flap on the display cable ZIF connector.
- After lifting the flap, gently pull the display cable from its socket.
- Disconnect the wireless antenna from the wireless card.
- Remove the four 2.2 mm Phillips #00 screws on the left and right sides of the laptop.

Step 8



- Use [tweezers](#) to remove the screw covers from the lid.
 - Remove the two 2.2 mm Phillips #000 screws.
 - Use a plastic opening tool to disengage the front part of the lid.
-

To reassemble your device, follow these instructions in reverse order.