



JBL Clip Plus Battery Replacement

The battery in the JBL Clip Plus is...

Written By: Noah Pauk



INTRODUCTION

The battery in the JBL Clip Plus is rechargeable. If the battery does not work, you will notice that the device does not stay on as long as it used to or won't turn on at all. If this is the case the battery will have to be replaced. The device will be taken apart and the battery will be removed and replaced.

TOOLS:

[Tweezers](#) (1)

Angled Tweezers

[iFixit Opening Tool](#) (1)

[Phillips #2 Screwdriver](#) (1)

[Solder and Desolder Kit](#) (1)

[Spudger](#) (1)

Step 1 — Battery



- Use the angled [tweezers](#) to carefully pull the rubber bumper off the back side of the device

Step 2



- There will be three 6mm philips head screws under that rubber bumper, remove these three screws.

Step 3



- The back cover should lift open easily and the components should be visible.

Step 4



- The battery is adhered to the back cover of the JBL Clip Plus, slowly lift the battery away from the case, using a spudger to pry the battery away from the adhesive.

Step 5



- Remove the three 7mm Philips head screws on the outer edges of the device.

Step 6



- Use the plastic prying tool to gently remove the face of the speaker from the body.

Step 7



- Use the spudger tool to gently scrape away the adhesive holding in the microphone.

⚠ When working with electronics, it's important to choose a tool that's ESD-safe to avoid accidental damage to the device. The regular black nylon spudger or a plastic opening tool should be used whenever possible.

Step 8



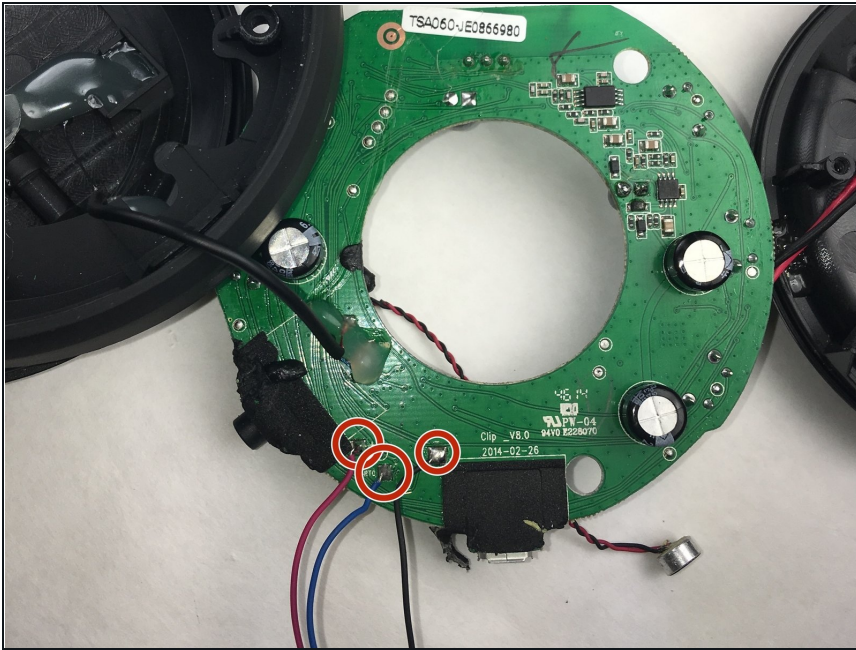
- Gently push the motherboard away from the microphone, this will allow you to remove the microphone.

Step 9



- Gently push the motherboard out from the frame of the JBL Clip Plus, this requires some force.

Step 10



- There are three solder points that need to be desoldered.
- If you need help with desoldering refer to [How to Solder and Desolder Connections](#) help. After these are removed the battery should be free.

To reassemble your device, follow these instructions in reverse order.