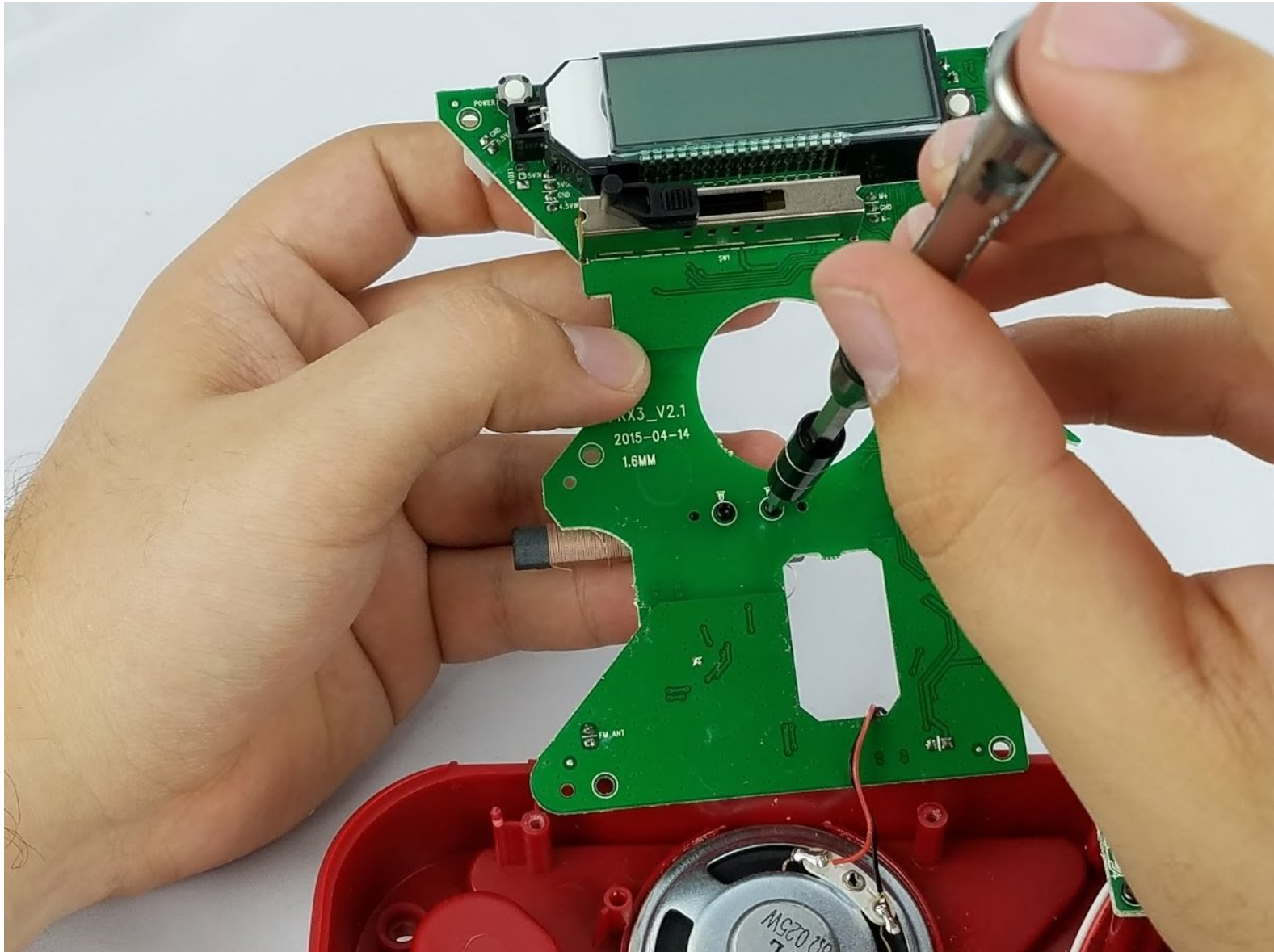




Eton FRX3 AM Radio Internal Antenna Replacement

Replace the AM radio internal antenna on the Eton FRX3.

Written By: Kenneth Sills



INTRODUCTION

If your AM Radio is not receiving signal, then you may be in a deadzone or it might be broken. If it is damaged, you will need to follow this guide to replace it.



TOOLS:

- [Soldering Iron](#) (1)
 - [iFixit Opening Tools](#) (1)
 - [Phillips #0 Screwdriver](#) (1)
 - [Solder](#) (1)
-

Step 1 — Rechargeable Battery Pack



- Pull the plastic tab on the battery compartment cover panel to loosen it, then pull the panel off.

Step 2



- Disconnect the battery pack wires from the device and remove the battery pack.

Step 3 — Case Assembly



- On the bottom of the device case's face are two T10 screws. Use a T10 Torx screwdriver to remove the two screws.

Step 4



- While using the T10 screwdriver, remove the two T10 screws on the back of the device's case.

Step 5



- Remove the two Phillips #00 screws located in the center of the back of the device.
- ⓘ You will need to use a thin shafted screwdriver or a female hexagonal bit that is found in the iFixit 54 bit toolkit to extend the reach of the Phillips #00 bit.

Step 6



- On the bottom of the device's case there are two rubber feet. Pry the rubber feet off of the case.
- ★ Try to keep the adhesive on the rubber feet as clean as possible to insure that they can be reattached during reassembly.

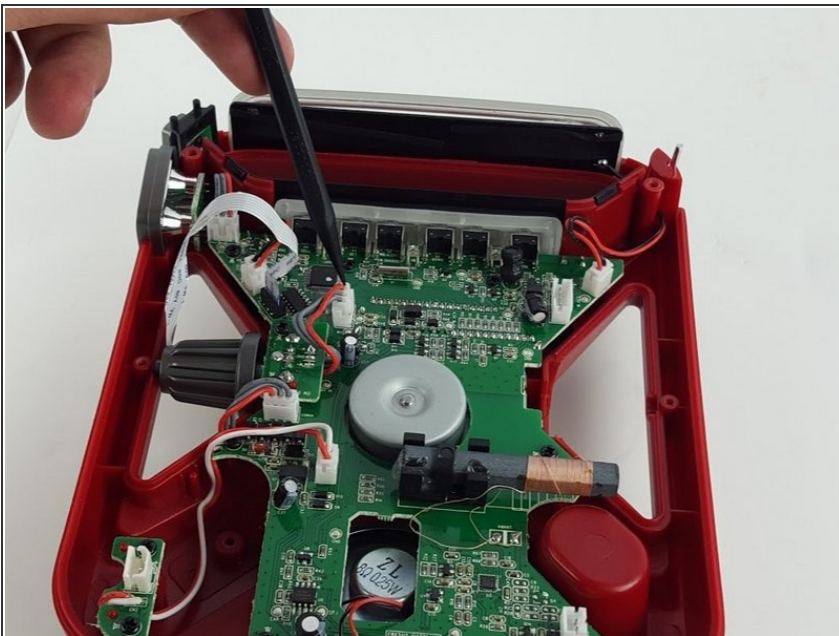
Step 7



- Pull the two halves of the device's case apart.

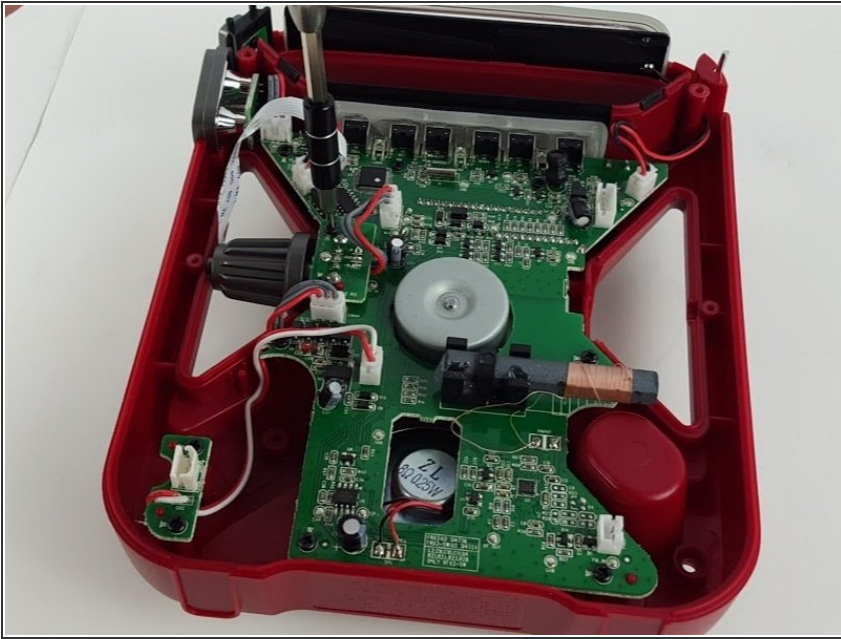
⚠ Take care when pulling the two halves apart. There are three cables that connect components of the device to the motherboard. Disconnect these cables in order to separate the two halves of the device's case.

Step 8 — Tuning Dial



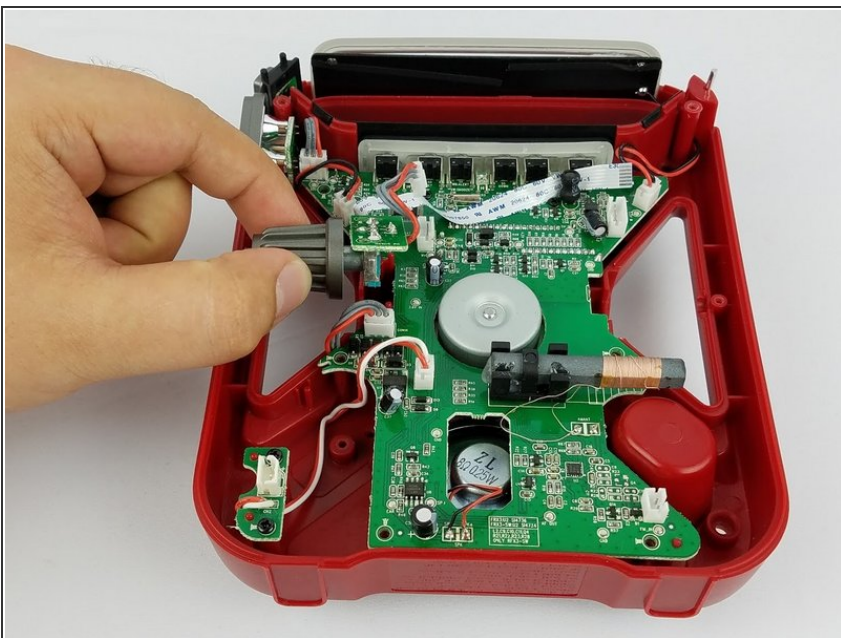
- Unplug the socket connection from the motherboard as shown in the image.

Step 9



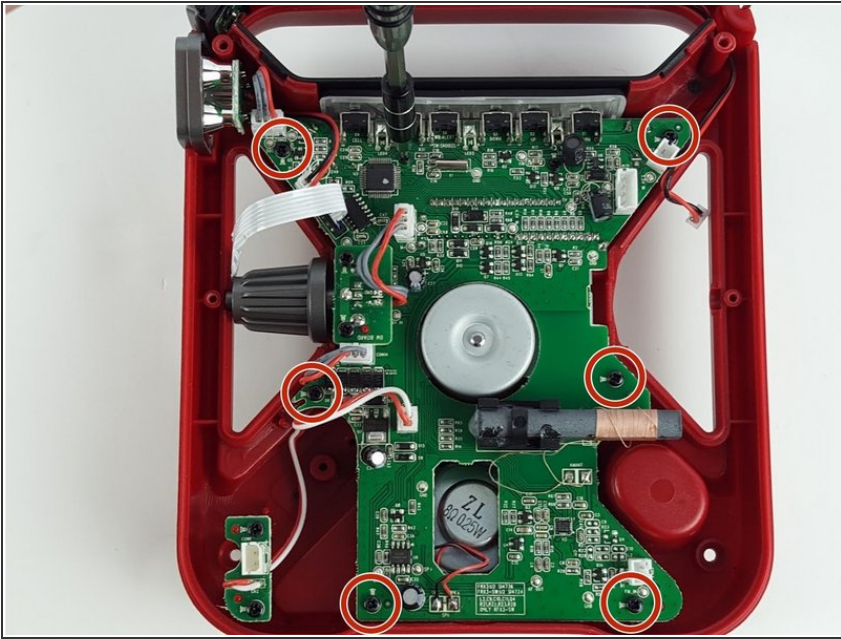
- Remove the two 1 cm Phillips #0 screws that secure the tuning dial panel to the motherboard.

Step 10



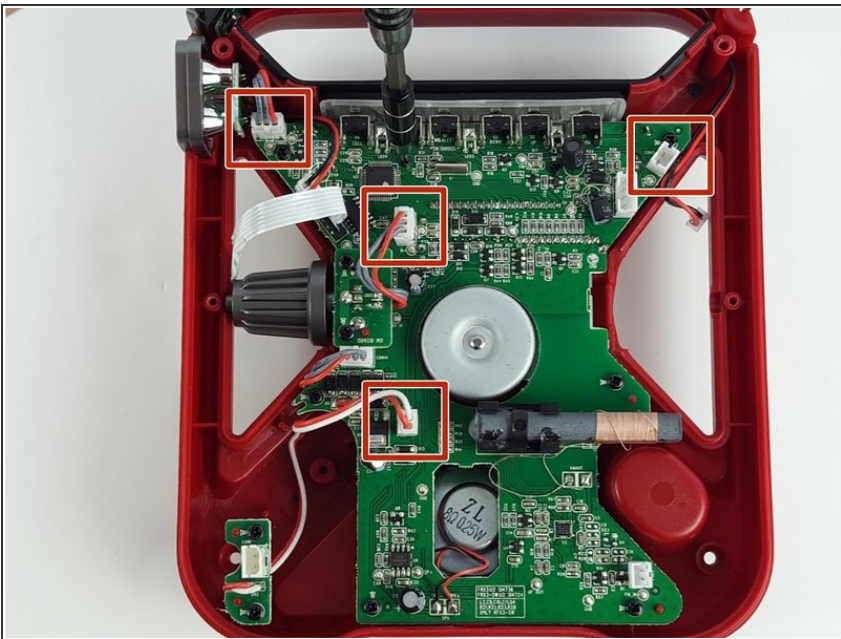
- Gently lift the dial upwards to remove it.

Step 11 — Motherboard



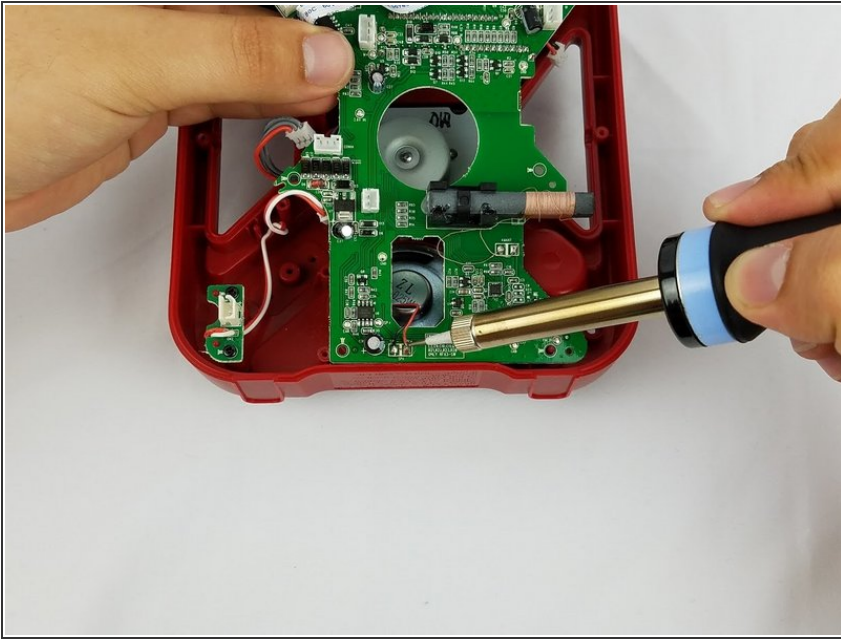
- Remove the six Phillips #0, 1 cm screws that secure the motherboard to the case.

Step 12



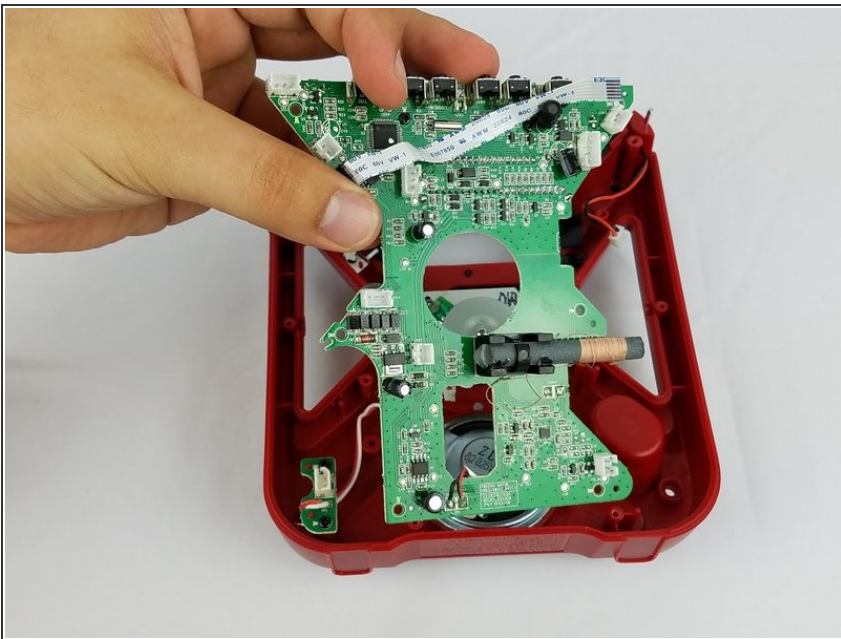
- Unplug all the component socket connections from the motherboard.

Step 13



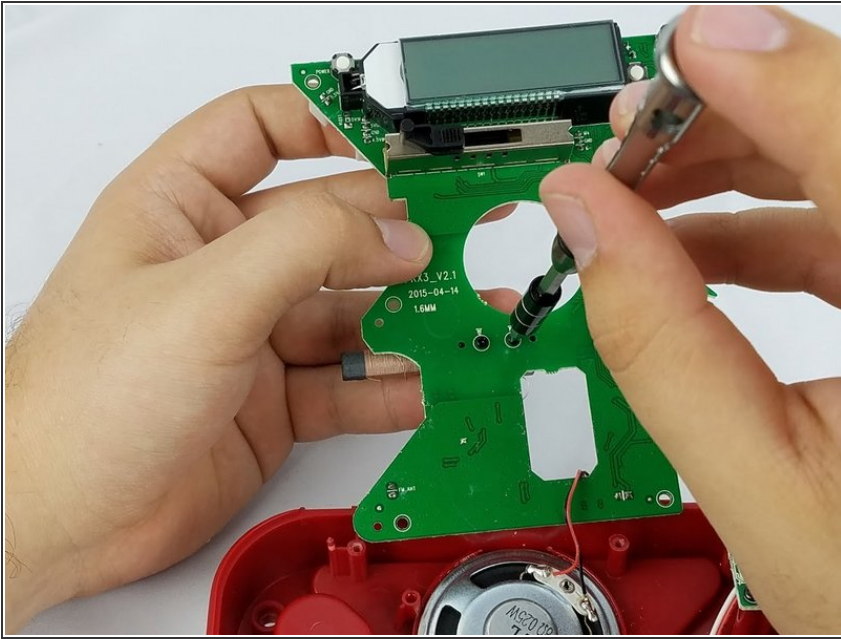
- Desolder the two wires that connect the speaker to the motherboard.

Step 14



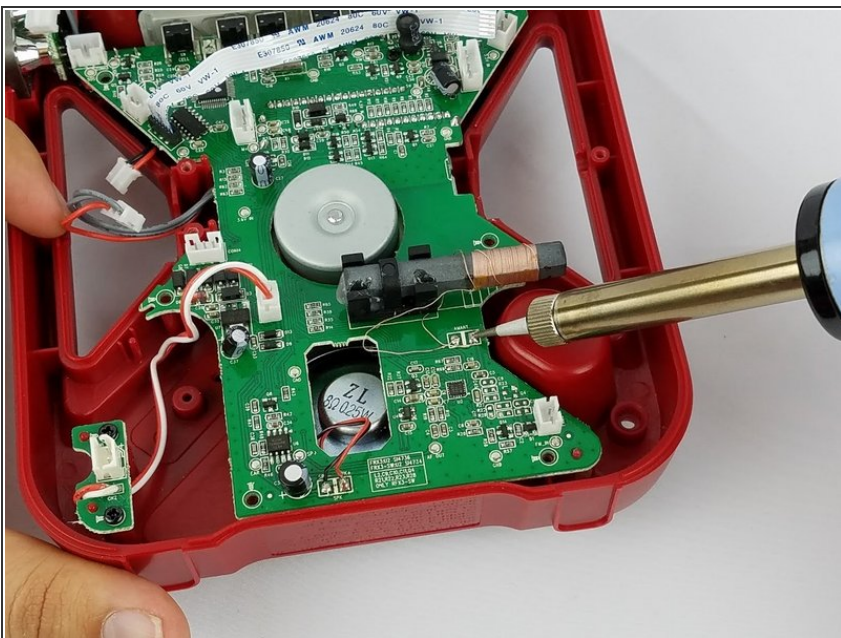
- Gently lift the motherboard upwards to remove it from the device.

Step 15 — AM Radio Antenna



- On the back of the motherboard, remove the two Philips #0 screws.

Step 16



- Turn the circuit board back over. Proceed to desolder the two thin wires from the AM antenna, that are soldered to the circuit board.
- Gently pull the AM antenna straight up, out of its housing, to remove it from the circuit board.

To reassemble your device, follow these instructions in the reverse order.