



# Samsung Galaxy S5 Neo Display Replacement

Follow the steps of this guide to replace a broken/non-functioning display on the Samsung Galaxy S5 Neo.

Written By: Smilzo



## INTRODUCTION

Follow the steps of this guide to replace a broken/non-functioning display on the Samsung Galaxy S5 Neo. After following these steps, you will also be in a better position to proceed with further teardown, if necessary for other repairs.

## Step 1 — Display



- Use your fingernail or a pry tool to remove the rear plastic cover of the device, by pulling back on the edges.

## Step 2



- Remove the battery.
- Remove the SIM card and SD card.

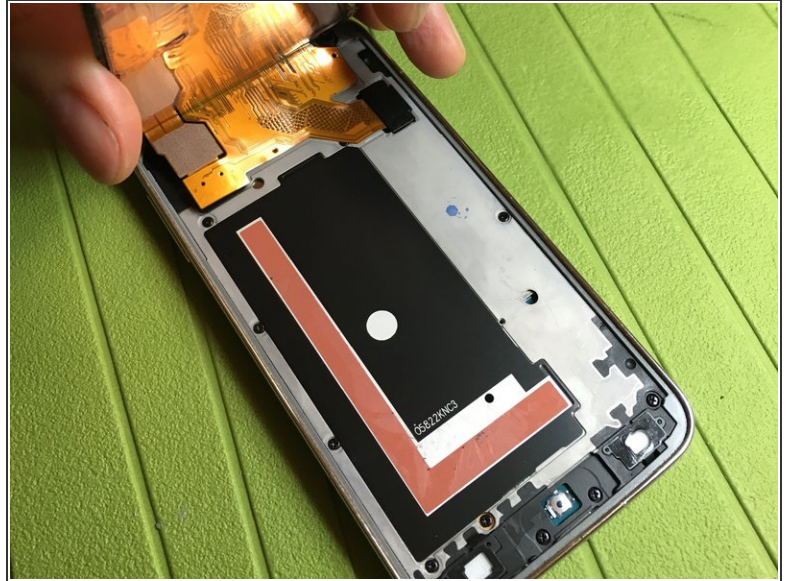


## Step 3



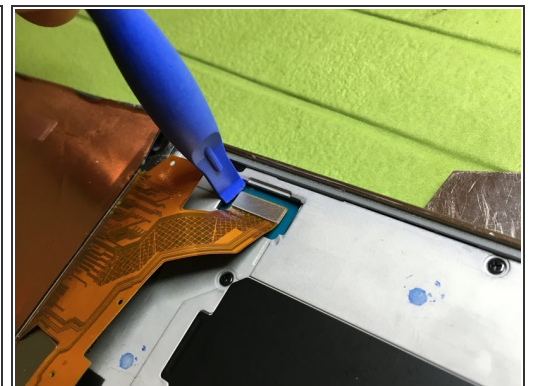
- Heat the display edges adequately at 80 degrees Celsius (176°F), then proceed to detach the display by inserting flat opening tools between the display glass and the frame.
- Be careful not to rip the flat cables that lie underneath the lower part of the phone, near the button.
- Be careful not to rip the flat display connectors that lie underneath the upper part of the phone.

## Step 4



- **!!!!CAUTION!!!!** The display is also glued in the middle with strong double-sided adhesive. Be **very** careful if the display is not broken, otherwise you may end up having to replace it with a new one.
- If you only need to remove the display to access the inside of the phone and perform other repairs, be wary of the central adhesive and ensure you heat it carefully.
- The pink strips are part of the very strong adhesive that could break the display.

## Step 5



- Remove the black snap-on cap covering the display connector.
- Unhook the display connector using a pry tool.

This document was generated on 2022-02-23 08:15:34 PM (MST).



## Step 6



- Remove the display and swap it out for a new one.

To assemble the device, follow these instructions in reverse order.