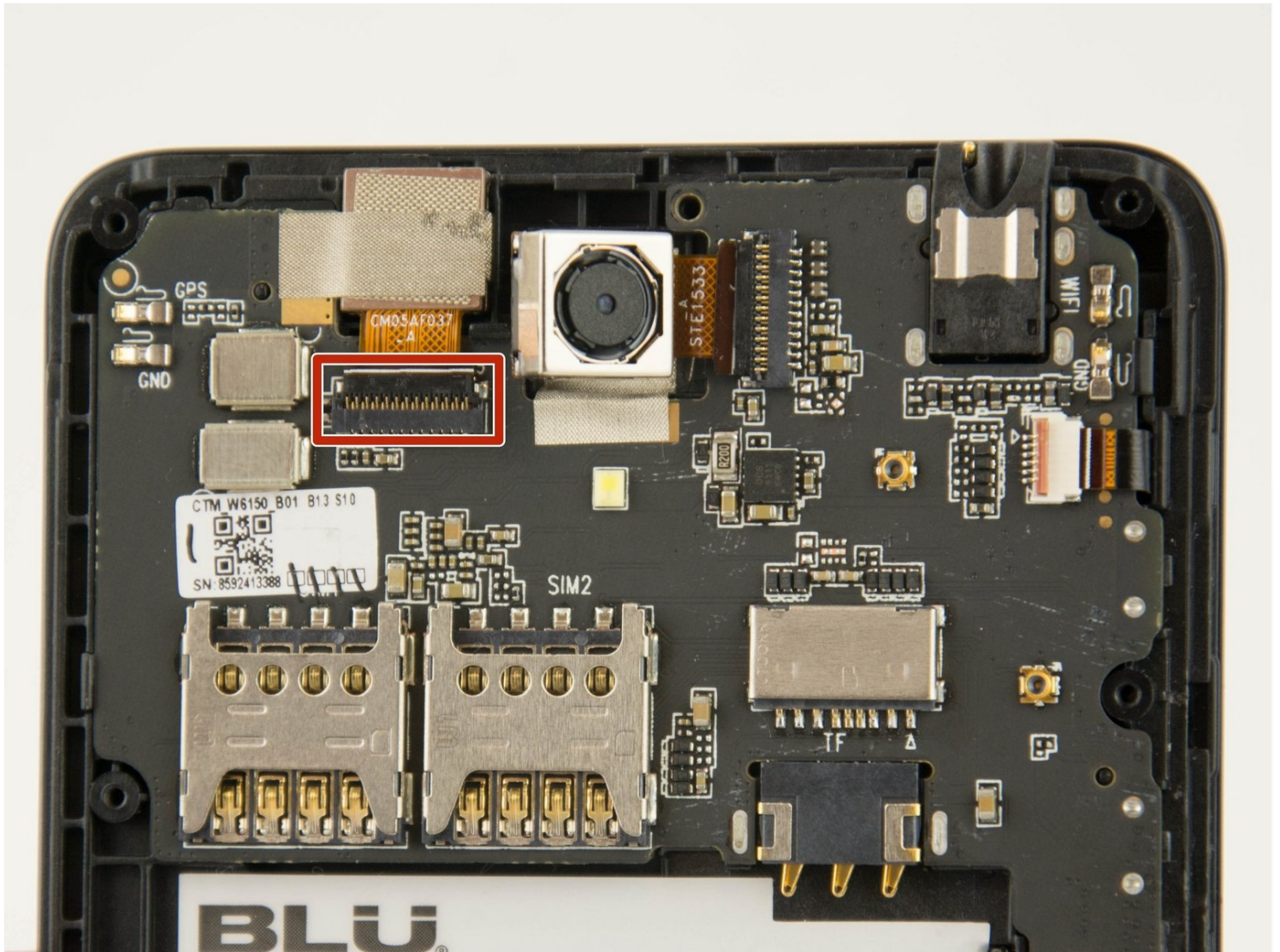




Blu Studio Selfie Front Facing Camera Replacement

Use this guide to replace the front facing...

Written By: Stacy Kam



INTRODUCTION

Use this guide to replace the front facing camera of the Blu Studio Selfie.

TOOLS:


[Phillips #000 Screwdriver](#) (1)

[iFixit Opening Tool](#) (1)

[Tweezers](#) (1)

Step 1 — Rear Cover



 **Make sure your phone is powered off.**

- Turn the front of the phone away from you.
- Run your fingers along the sides of the phone to identify where the case can be pulled apart.

Step 2



- Insert the flat end of your plastic opening tool into the crevice you found along the side of the phone.
- Gently apply pressure until you feel the back case pop free of the phone.
- Continue the previous two steps around the rest of the phone until the case is fully removed.

Step 3 — Battery



- Identify the crevice at the bottom of the battery.
- ① There should be enough space for you to fit your fingernail between the battery and the phone.
- Gently lift the battery free of the phone.

Step 4 — Midframe



- Remove all the 4mm Phillips #000 screws from the midframe.

Step 5



- Insert the spudger between the midframe and the display assembly.
- Gently pry up the midframe.

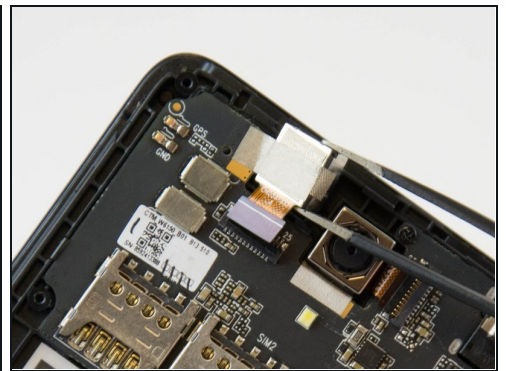
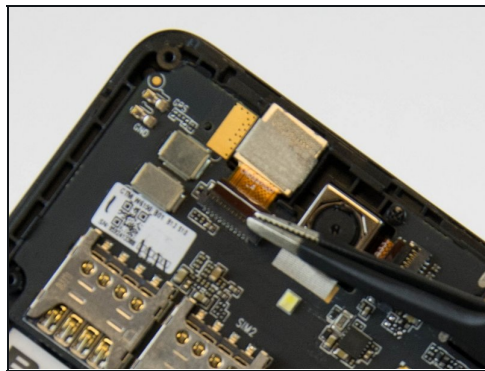
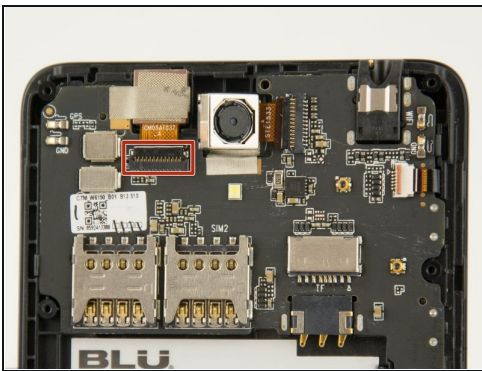
⚠ When working with electronics, it's important to choose a tool that's ESD-safe to avoid accidental damage to the device. The metal spudger is great when you need serious prying power, but the regular black nylon spudger or a plastic opening tool should be used whenever possible.

Step 6



- ❗ Where the battery rested before, you will find a small clip that holds down the midframe.
- After the rest of the midframe is detached, from the phone place the flat end of the spudger beneath the clip.
- Gently lift up on the clip until it comes free.
- Remove the midframe from the phone.

Step 7 — Front Facing Camera



- Use tweezers to lift the black tab on the ZIF connector and pull the ribbon cable out of place.
- Using a pair of tweezers for assistance, remove the front facing camera from its case.

To reassemble your device, follow these instructions in reverse order.