



# MacBook Pro 15" Unibody Early 2011 AirPort/Bluetooth Cable Replacement

Replace the AirPort/Bluetooth cable in your MacBook Pro 15" Unibody Early 2011.

Written By: Walter Galan



# INTRODUCTION

Faulty Wi-Fi or Bluetooth connection? Replace the AirPort/Bluetooth cable.



## TOOLS:

- [Phillips #00 Screwdriver](#) (1)
- [Spudger](#) (1)



## PARTS:

- [MacBook Pro 15" Unibody \(Early 2011\) Airport/Bluetooth Cable](#) (1)

## Step 1 — Lower Case



- Remove the following ten screws securing the lower case to the upper case:
  - Three 13.5 mm (14.1 mm) Phillips screws.
  - Seven 3 mm Phillips screws.

★ When removing these screws, note how they come out at a slight angle. They must be reinstalled the same way.

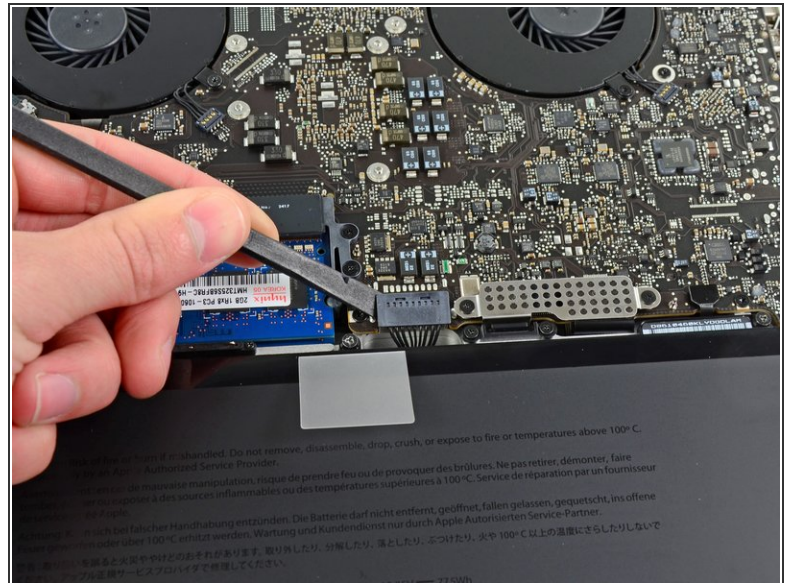
## Step 2



- Using both hands, lift the lower case near the vent to pop it off two clips securing it to the upper case.
- Remove the lower case and set it aside.

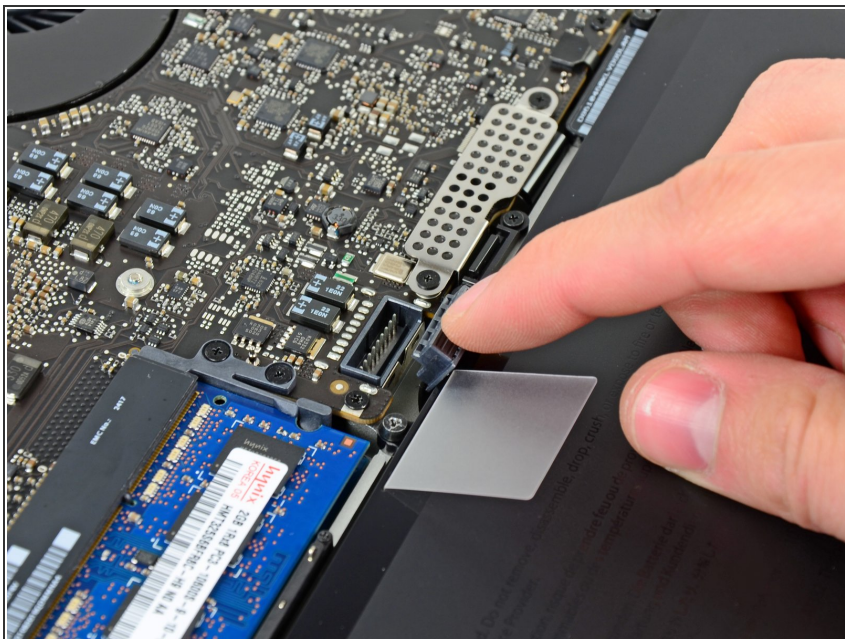


## Step 3 — Battery Connector



- ☑ For certain repairs (e.g. hard drive), disconnecting the battery connector is not necessary but is recommended as it prevents any accidental shorting of electronics on the motherboard. If you do not disconnect the battery connector, please be careful as parts of the motherboard might be electrified.
- Use the edge of a spudger to pry the battery connector upwards from its socket on the logic board.
- ℹ It is useful to pry upward on both short sides of the connector to "walk" it out of its socket.

## Step 4



- Bend the battery cable slightly away from its socket on the logic board so it does not accidentally connect itself while you work.

## Step 5 — AirPort/Bluetooth Cable



- Use the flat end of a spudger to lift the AirPort/Bluetooth connector out of its socket on the logic board.

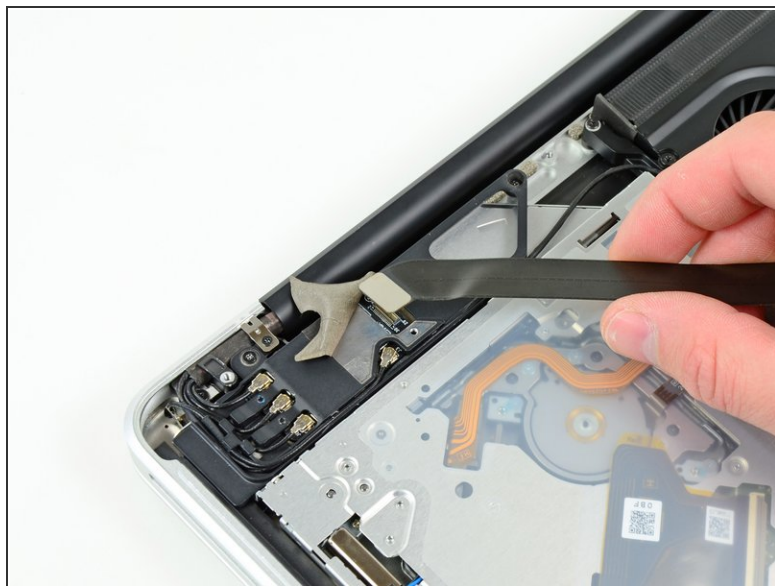
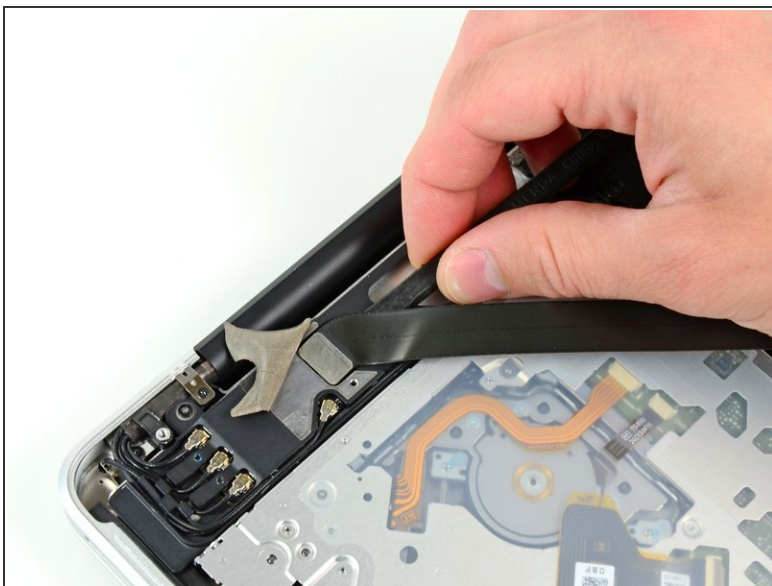


## Step 6



- Peel back the piece of EMI tape covering the AirPort/Bluetooth cable on the AirPort/Bluetooth housing.

## Step 7



- Use the flat end of a spudger to gently lift the AirPort/Bluetooth connector out of its socket on the AirPort/Bluetooth board.
- Remove the cable from your MacBook.

To reassemble your device, follow these instructions in reverse order.