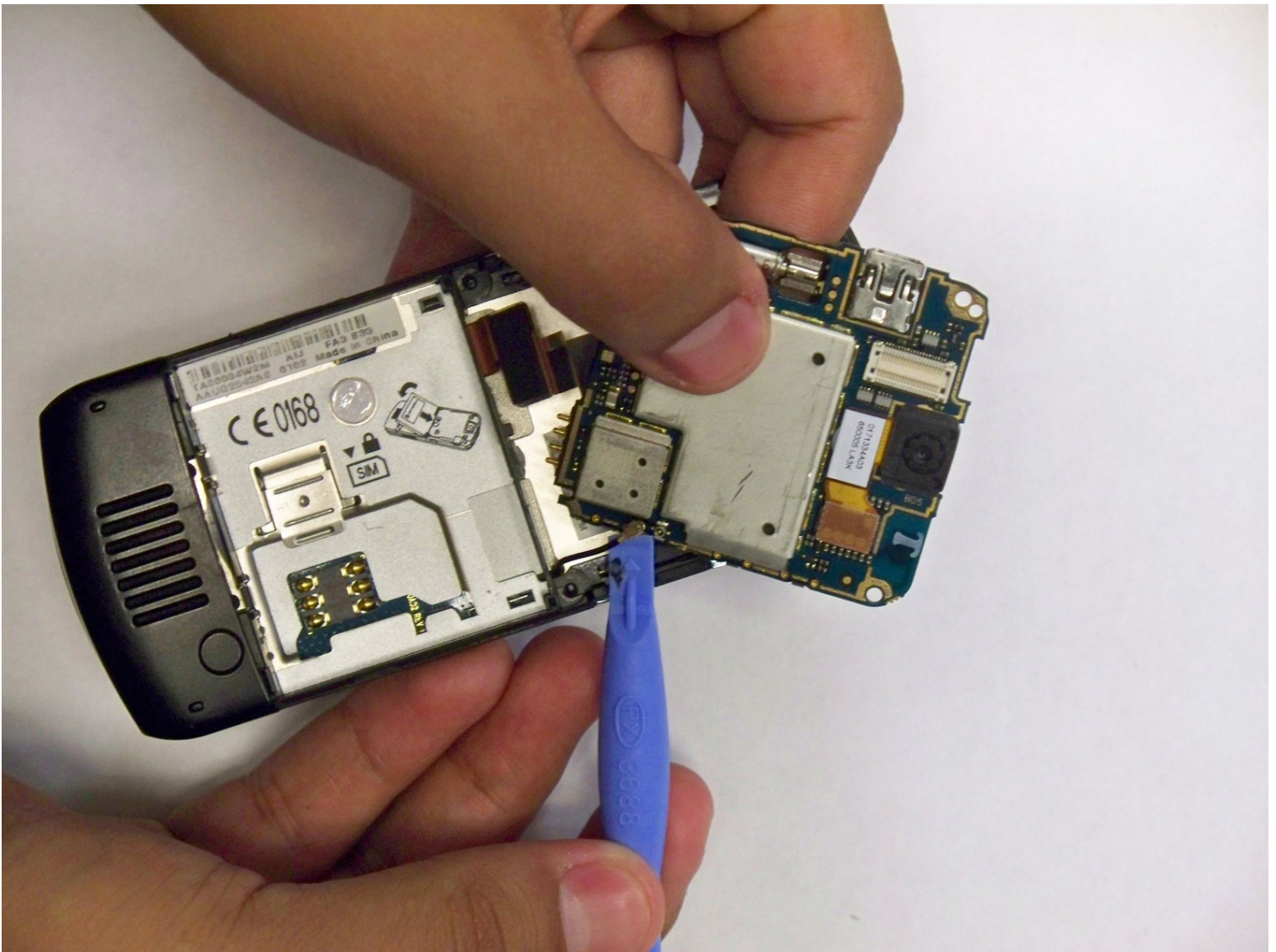




Motorola Slvr L7 Camera Assembly Replacement

Written By: Jorge Trujillo



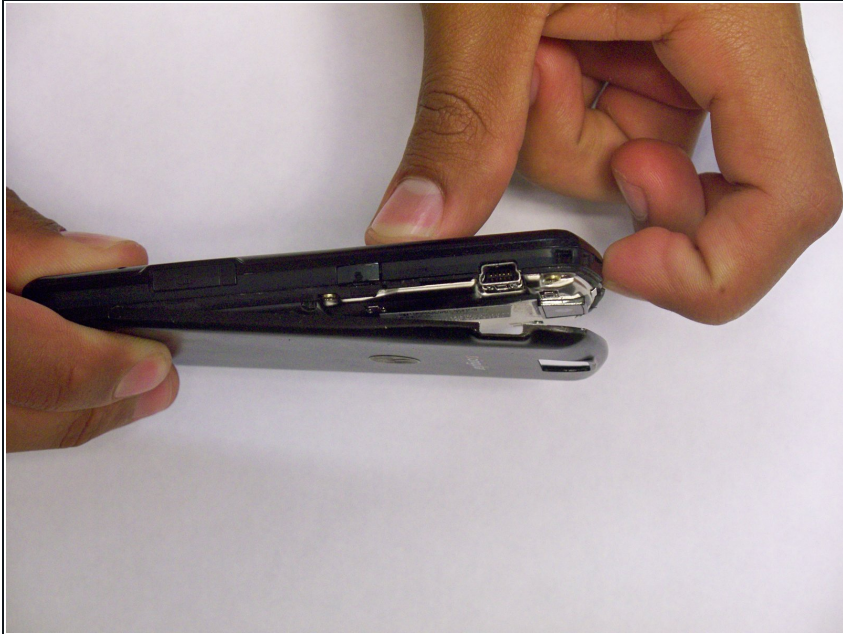


TOOLS:

T6 Torx Screwdriver (1)

iFixit Opening Tool (1)

Step 1 — Camera Assembly



⚠ To ensure safety, discharge your phone battery below 25% before starting. A fully charged lithium-ion battery may cause a fire and/or explosion due to defects or damage.

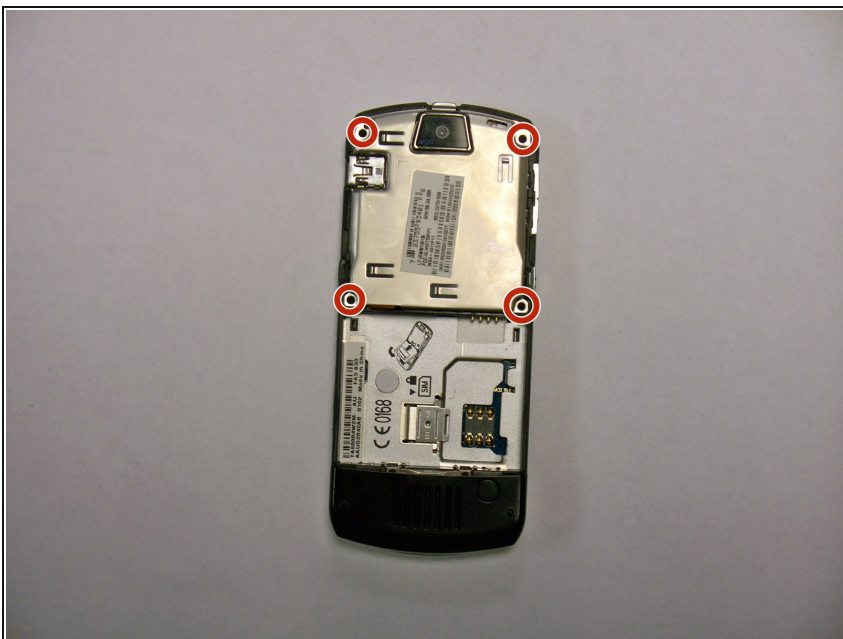
- Turn off your phone before beginning disassembly.
- To replace the camera, first begin by removing the battery.
- Push down on the black tab at the Motorola phone's top center to detach the back phone cover and access the battery.

Step 2



- Remove the battery on the back of the Motorola phone by pulling it away from the back of the phone.

Step 3



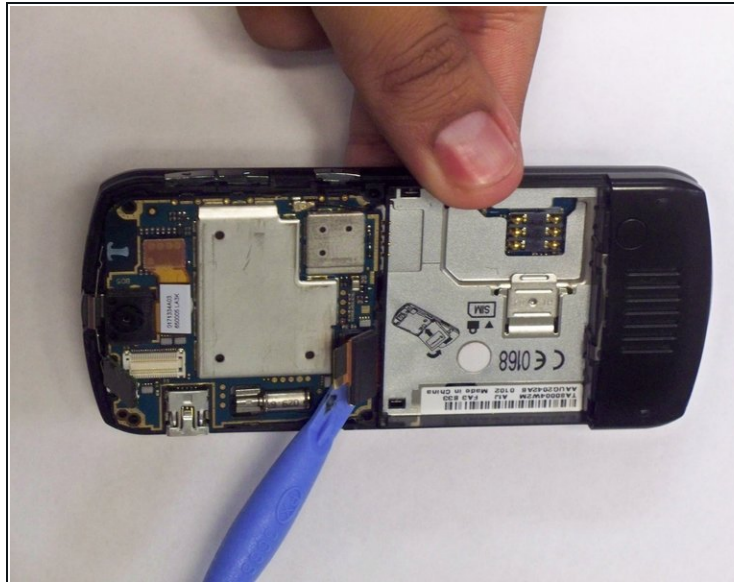
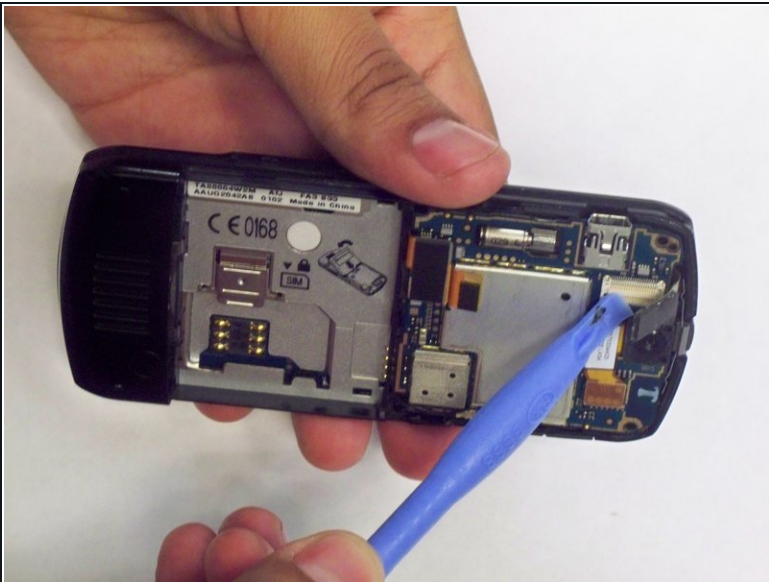
- Remove the four (4) T6 Torx screws from the back of the metal back plate.

Step 4



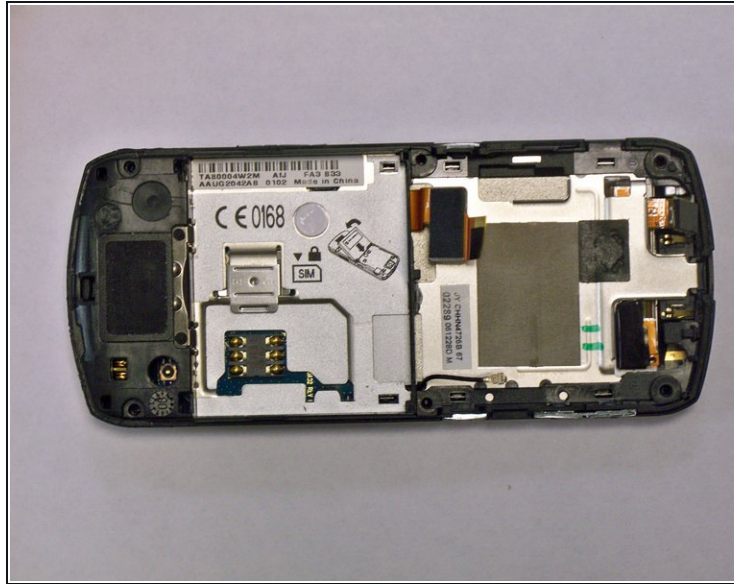
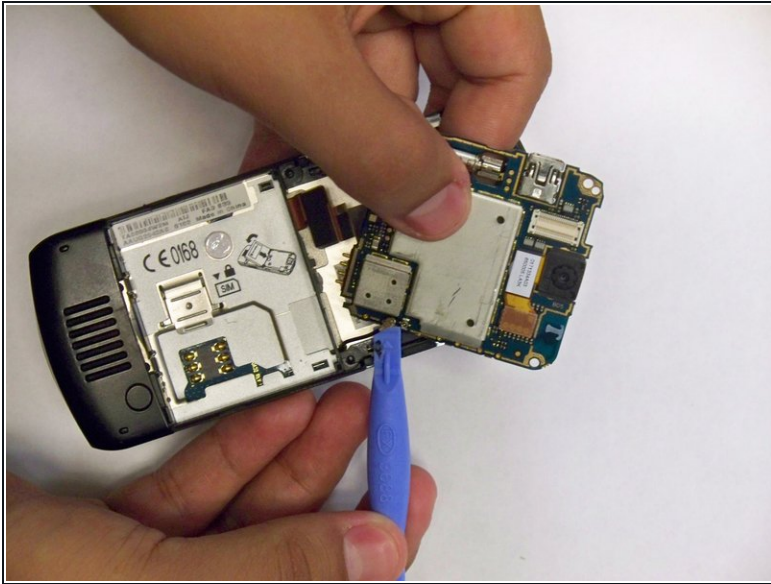
- Remove the metal cover by inserting the flat end of the iFixit Opening Tool under the side of the cover, prying it away from the phone.

Step 5



- Carefully separate the two connectors from their sockets on the motherboard using the flat end of the iFixit Opening Tool, so the two connectors are open.

Step 6



- Use the flat end iFixit Opening Tool to pry the antenna cable connectors from their respective sockets on the motherboard.
- Pull the antenna cable out to de-route it from the phone.

To reassemble your device, follow these instructions in reverse order.