

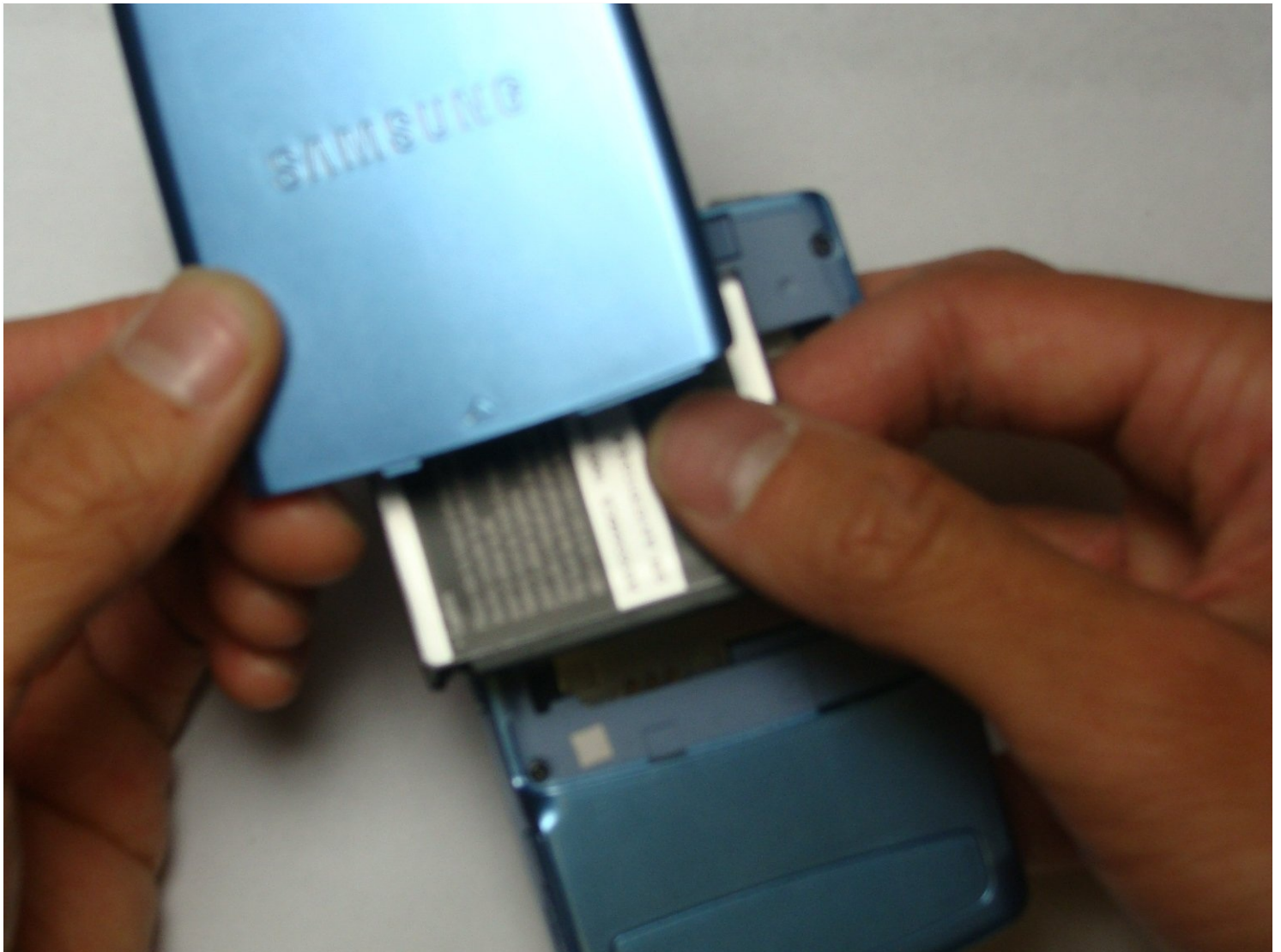


Archived

Samsung Propel Battery Replacement

This guide will enable users to remove and...

Written By: mdoan



INTRODUCTION

This guide will enable users to remove and replace the battery.

TOOLS:

Drill (hand drill or powered drill) with
1.5mm~2mm (1/16"~5/64") Twist drill
bit (1)

Step 1 — Battery



- Press down the back and push up to remove back cover.
- Insert finger into gap at the top left and remove battery.

To reassemble your device, follow these instructions in reverse order.