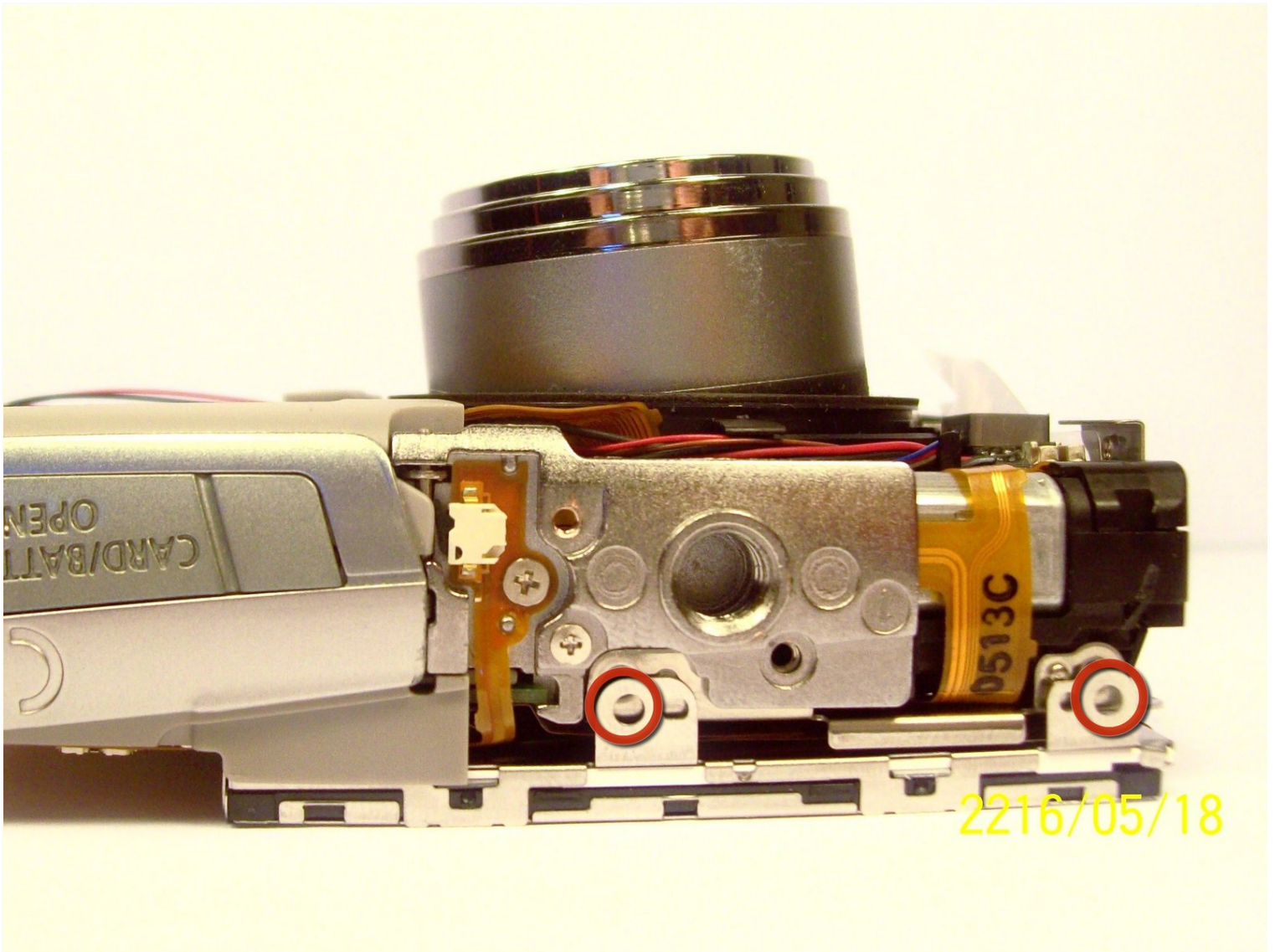




# Canon PowerShot SD700 LCD screen Replacement

Follow these steps to remove and install a new...

Written By: Emilio Rossi



# INTRODUCTION

Follow these steps to remove and install a new LCD screen.

## TOOLS:

[Spudger \(spatule antistatique\)](#) (1)

[Tournevis cruciforme #00](#) (1)

### Step 1 — Outside Case



- Turn off the camera by pressing the power button above the LCD screen.

## Step 2



- Remove the two, small screws on the bottom of the camera using a Phillip's #00 screwdriver.

## Step 3



- Use a Phillips #00 screwdriver to remove the two, small screws on the right side of the camera.



## Step 4



- Use a Phillips #00 screwdriver to remove the screw on the left of the camera under the A/V out Digital label.

## Step 5



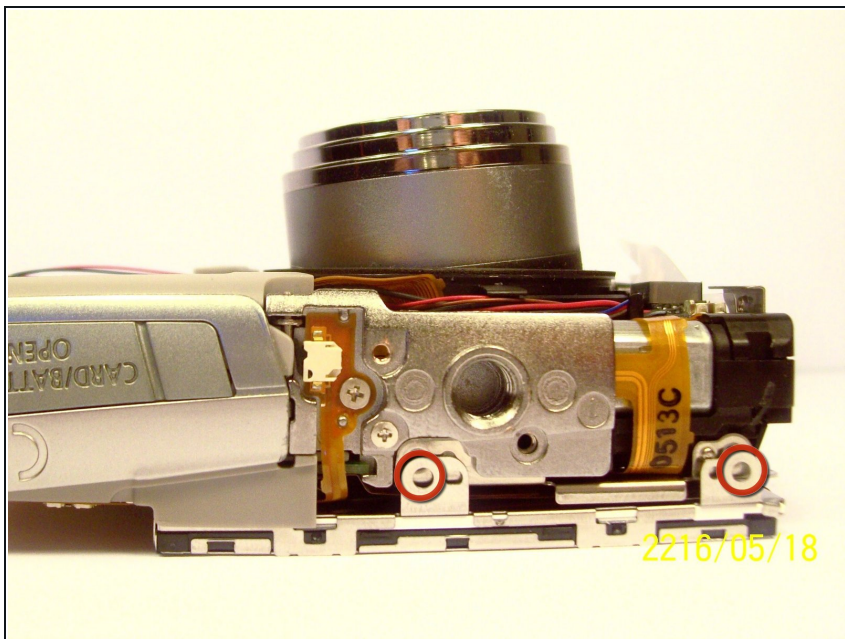
- Use a Phillips #00 screwdriver, remove the screw on the bottom of the camera near the battery and memory card slots.
- ⓘ This screw will be longer than the rest of the screws.

## Step 6



- Remove the front, back, and side casings from the camera and set to the side.

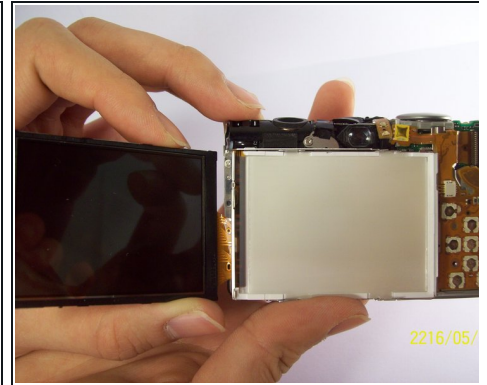
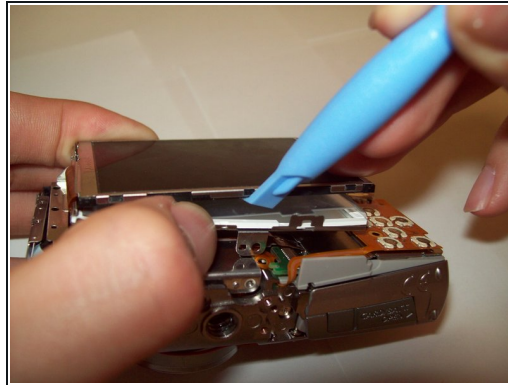
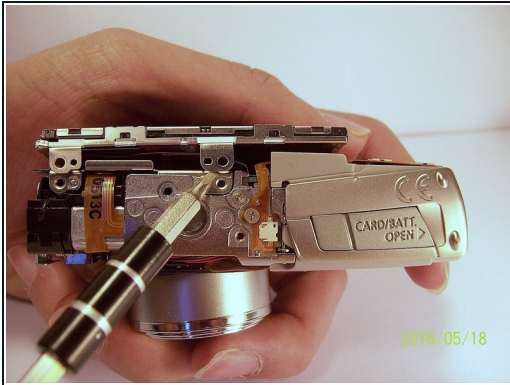
## Step 7 — LCD screen



- Remove the two screws that connect the LCD and backlight to the main body of the camera.

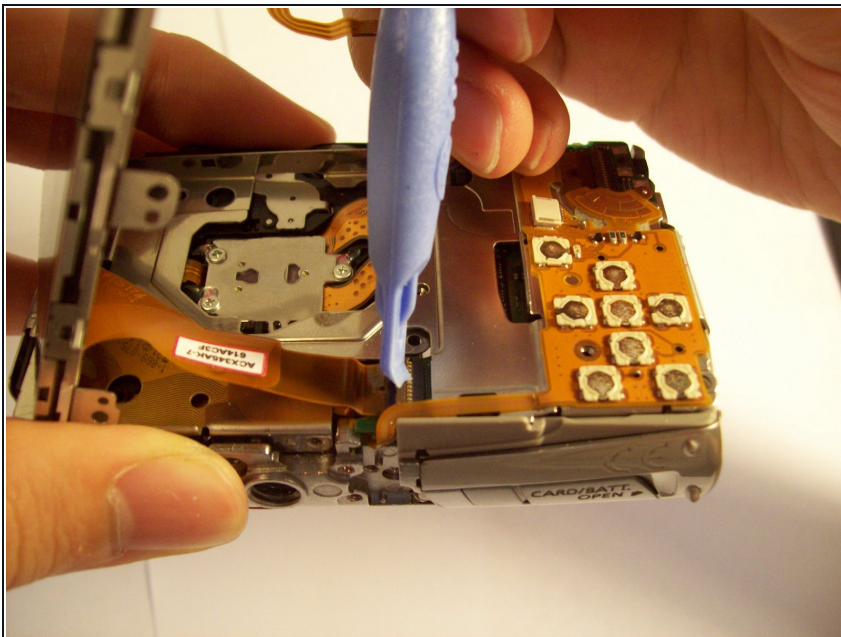


## Step 8



- Gently pry the LCD and the backlight from the main body of the camera.
- Gently pry the LCD from the backlight.
  - The thin ribbon cable is for the backlight.
  - The thick ribbon cable is for the LCD screen.

## Step 9



- Carefully lift the ZIF connector that covers the thick ribbon cable.
- This ZIF connector is fragile. Use caution when lifting it from its down position.
- Insert the new LCD and reassemble the camera.

To reassemble your device, follow these instructions in reverse order.