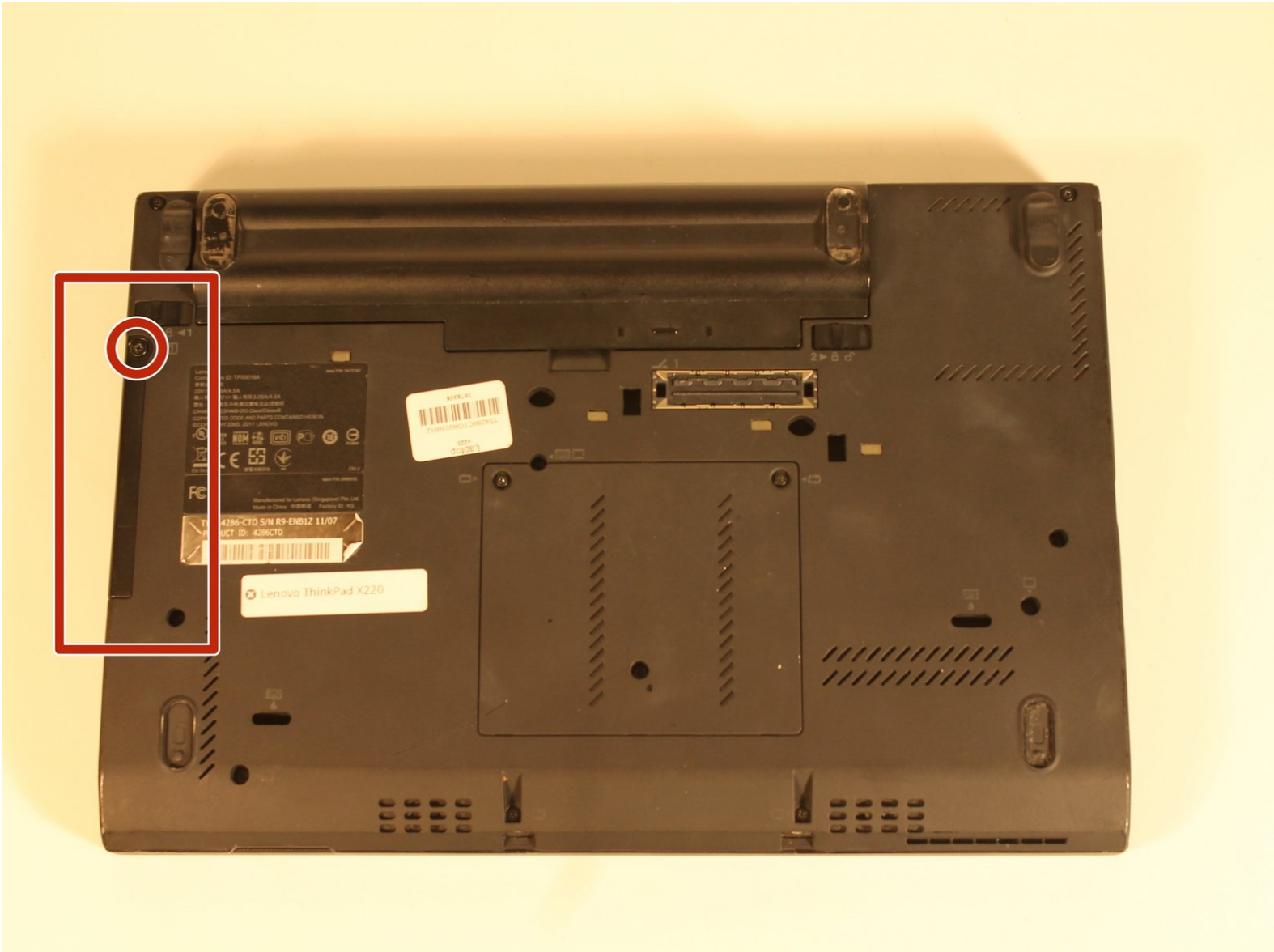




# Lenovo Thinkpad X220 Hard Drive Replacement

This guide will help you replace your hard drive in your Lenovo Thinkpad X220.

Written By: Mariska Gramlow





## TOOLS:

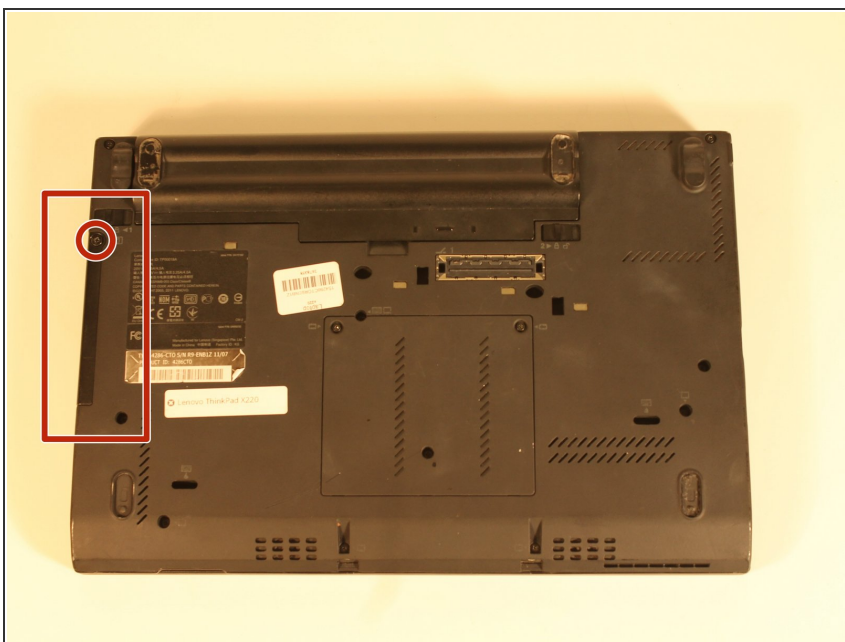
- [JIS Driver Set](#) (1)



## PARTS:

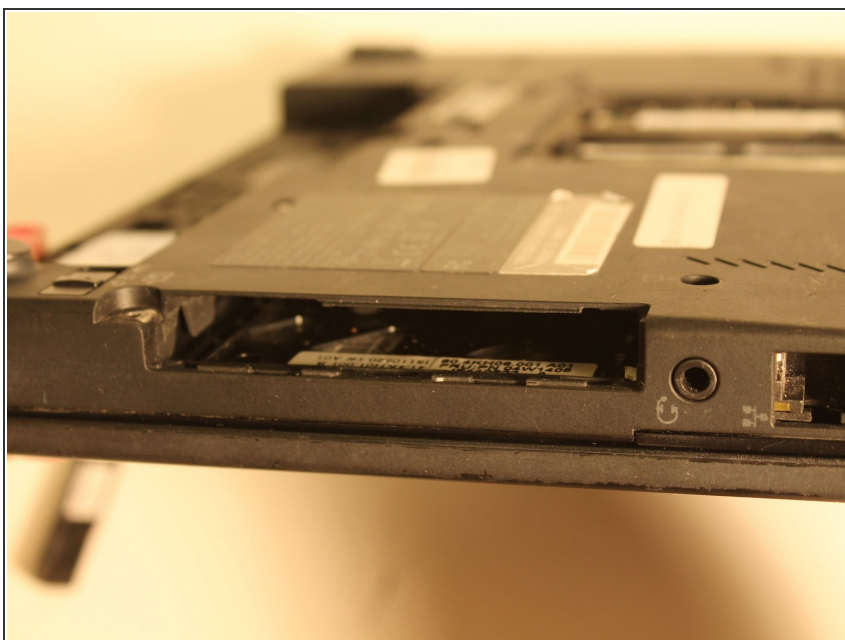
- [Lenova Thinkpad X220 Hard Drive](#) (1)

## Step 1 — Hard Drive



- Turn laptop over to expose the battery.
- Grab the Phillips screwdriver with the JIS, J00 head.
- Remove the one screw from side panel.
- Remove the side panel.

## Step 2



- Gently slide out the hard drive.
- Slide the replacement hard drive into place.

## Step 3



- Place side panel back into place.
- Insert the one screw back into place.
- Hard drive is now ready for regular use.

To reassemble your device, follow these instructions in reverse order.