



Microsoft Lumia 640 LTE Front Screen Replacement

This is a small guide on how to change the front screen panel assembly.

Written By: Nick Flor



INTRODUCTION

This repair is very easy and will only take 25-45 minutes.



TOOLS:

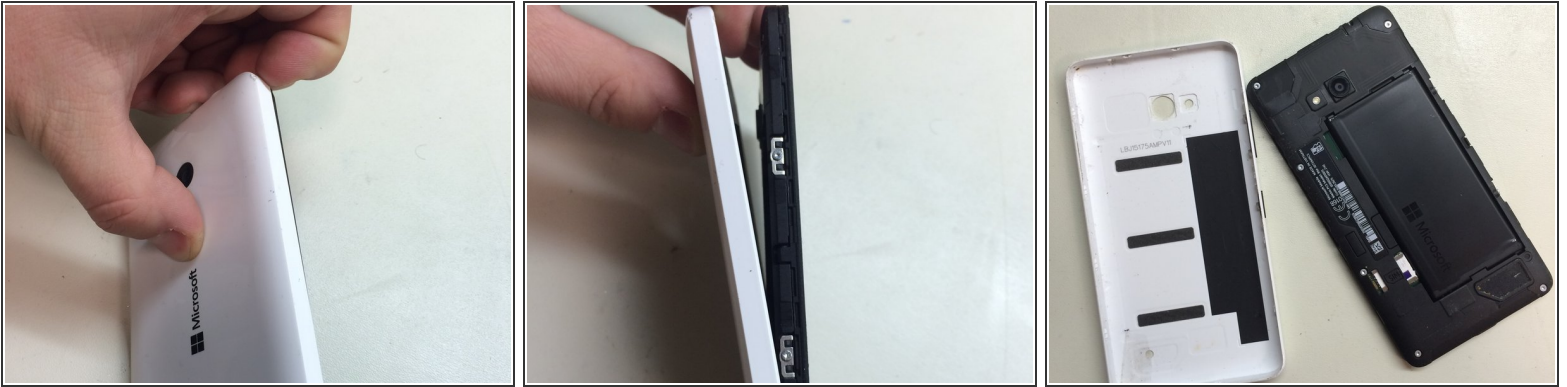
- [Phillips #1 Screwdriver](#) (1)
- [T4 Torx Screwdriver](#) (1)
- [iFixit Opening Tools](#) (1)
- [Tweezers](#) (1)



PARTS:

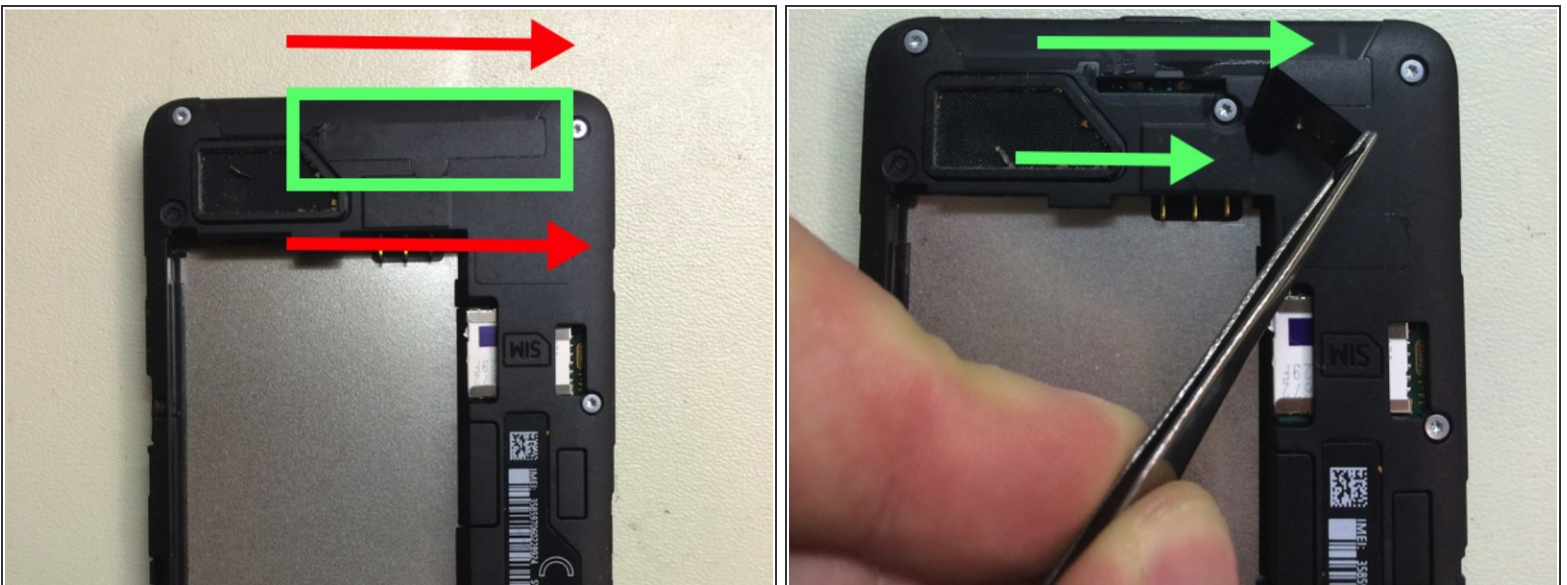
- [Front screen digitizer](#) (1)

Step 1 — Take off the back cover



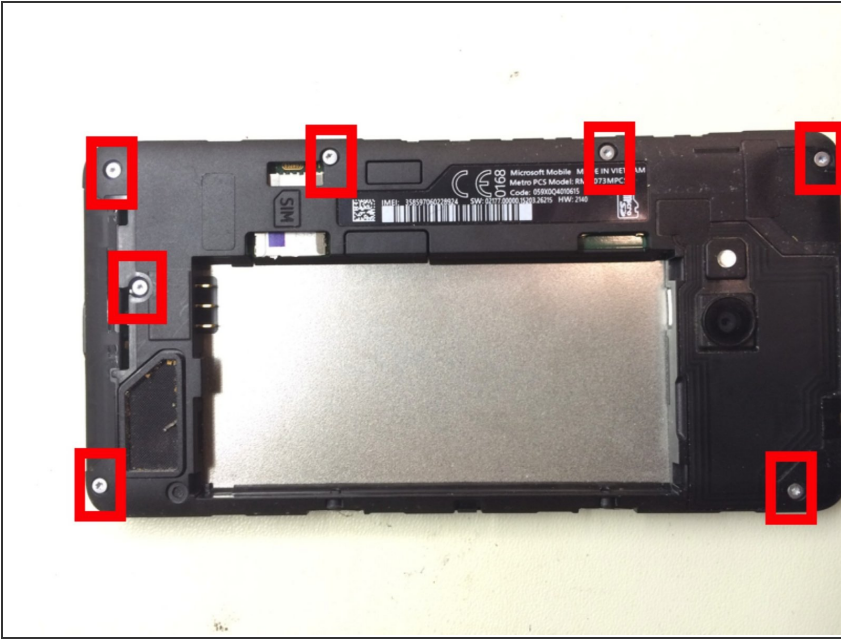
- Back comes apart easily

Step 2 — Peeling of the tape



- Peel the tape from left to the right.
- Under the tape there is a hidden screw.

Step 3 — Take out the back screws.



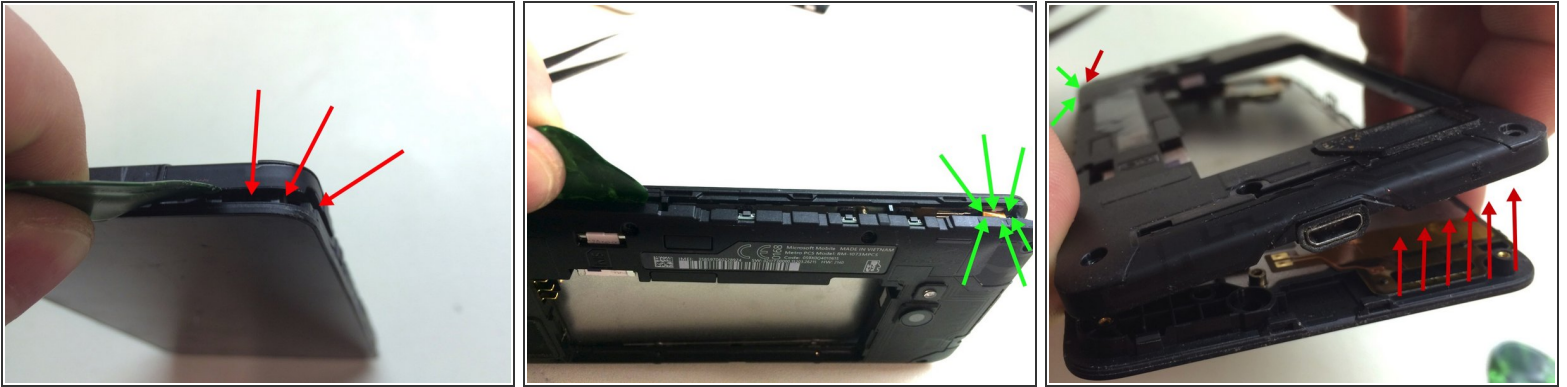
⚠ Take these screws out, and remember organize your screws so you know where they are going when you are putting the phone back together.

Step 4 — Take out the side screws.



- Turn the phone on its side and there are two (2) more screws that needs to be taken out.

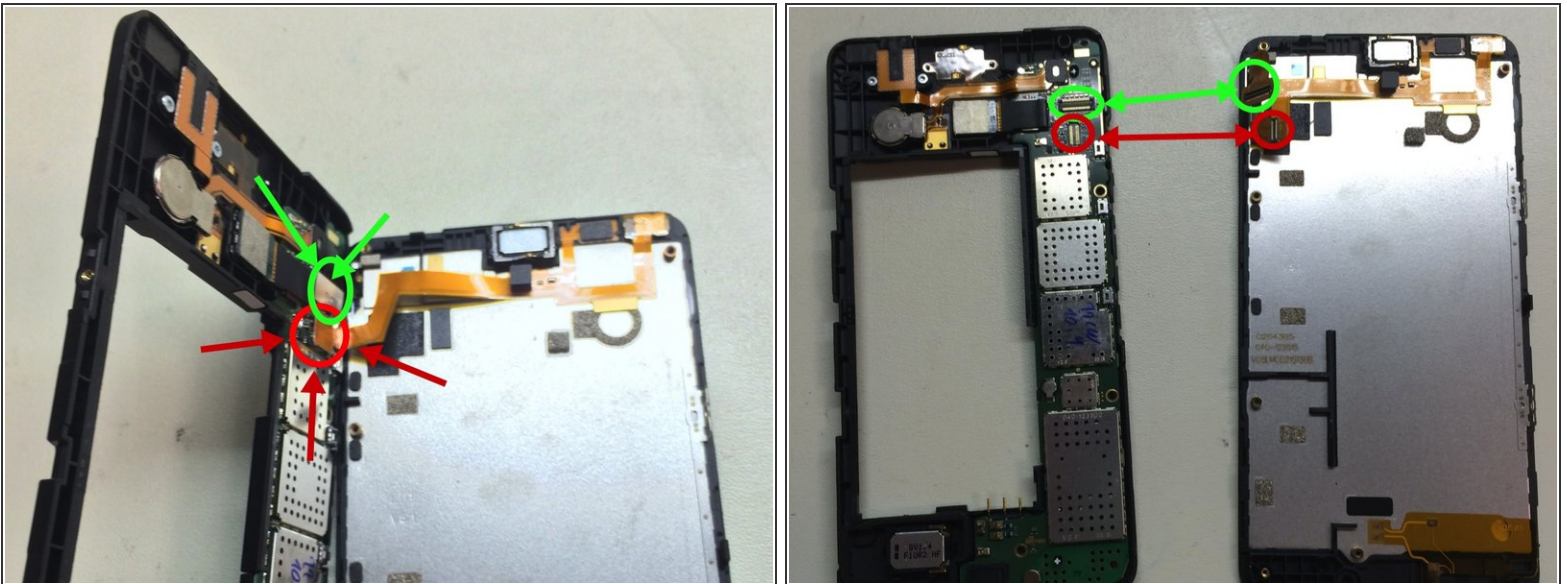
Step 5 — Release the back from the screen.



- Be careful of the top left corner of the phone, the connecting cable is sitting there.

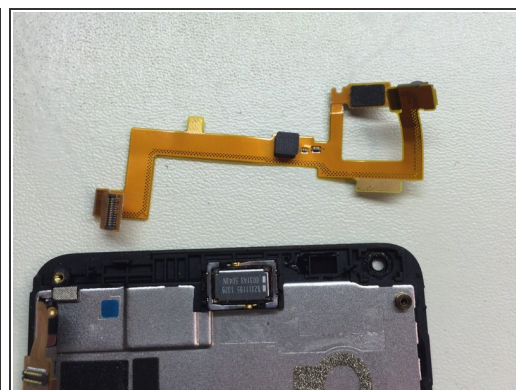
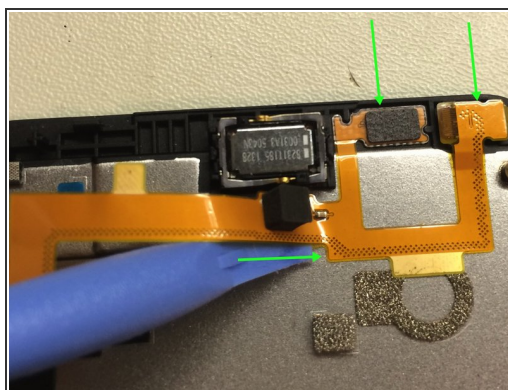
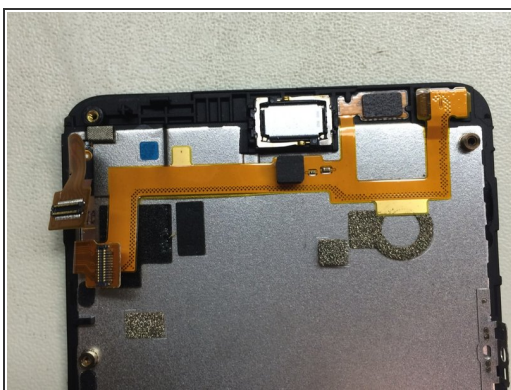
⚠ The green arrows indicates where the cable is, so be careful

Step 6 — Disconnect cables



- disconnect the two connectors here: Green, and Red.

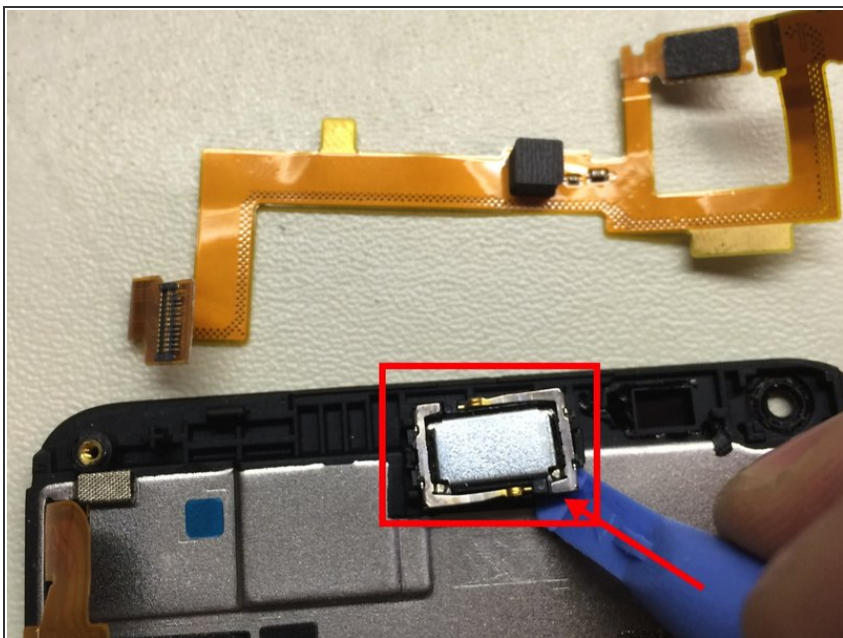
Step 7 — Removing camera/speaker



⚠ Carefully remove the cable.

- Top two arrows indicate Camera, and chip. Bottom arrow indicate the way it is easiest to get the cable off.

Step 8 — Last step, remove the speaker.



- The speaker comes out really easy

⚠ Do not fear, it is not attached by a cable but only glue.

To reassemble your device, follow these instructions in reverse order.