



# Saeco Intelia HD8752 LCD Display Panel Replacement

After several years of use, the display of your...

Written By: Jean T



# INTRODUCTION

After several years of use, the display of your Saeco Intelia machine might not display properly statuses colors (green/yellow/red). In this tutorial, we will see how to replace the LCD display of the machine.

---

## TOOLS:

TR10 Torx Security Screwdriver (1)

## PARTS:


Saeco LCD Display Panel (1)

Saeco 12001630

---

## Step 1 — Disconnecting power



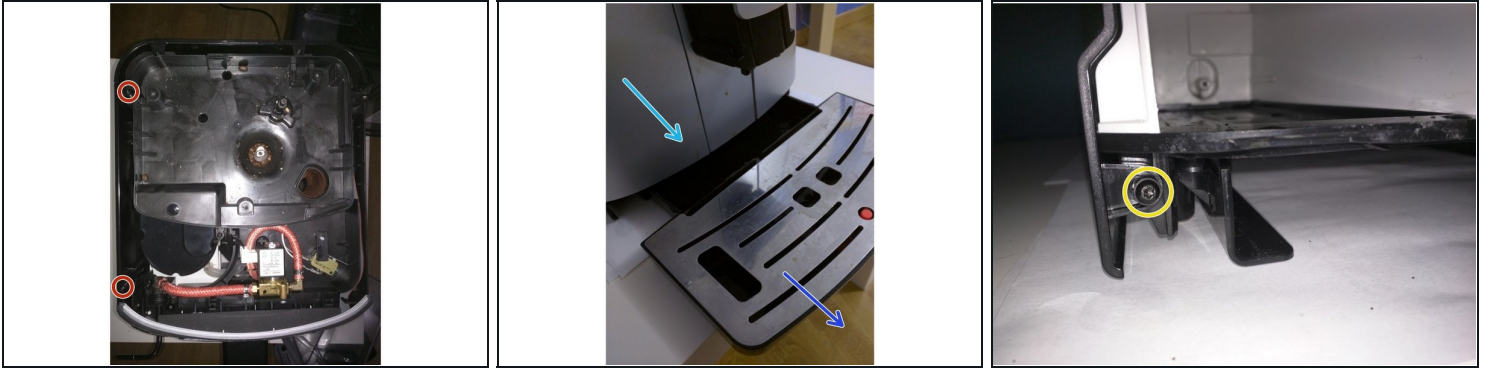
 First, start by putting appliance into standby mode. Then put general switch to 0. Finally, disconnect power cord.

## Step 2 — Removing the bean coffee container and the upper casing cover



- ① Start by removing all coffee beans from the container.
- Remove the screw in the middle of the bean container protection and remove the bean container protection.
- Remove the three screws of the bean container and remove the bean container.
  - ☑ Use a magnet to get them up so that you don't drop them into the grinder hole.
- You can now remove the upper casing cover by pulling it up gently (picture 2).

### Step 3 — Removing left side casing



- Remove the two screws on the top of the left panel.
- Remove the drip tray.
- Remove the water tank.
- Below the water tank location, remove the bottom screw of the left side casing.
- Remove the left side casing by pulling it gently. Take care of the nick, at the middle of the panel (above the yellow marked screw).

## Step 4 — Removing silver front panel



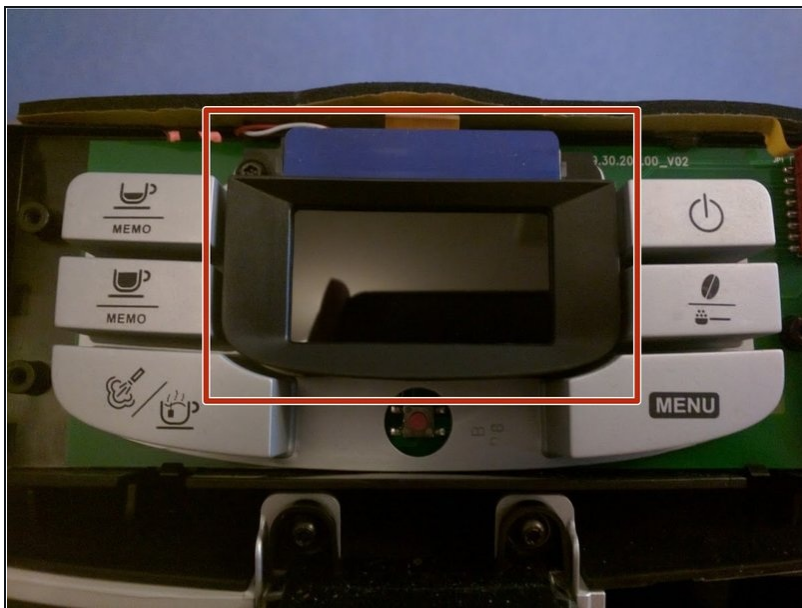
- If Pannarello is present, remove it first from hot water dispenser by pulling it firmly to the bottom. Next, open up service gate on the right of the appliance.
- Remove the two right screws of the silver front panel.
- ① To remove the next screws, you must have removed left side casing as explained in previous step. Owners of Intelia machine with external milk carafe (HD8753/87)? Please, also have a look at Paul Tast comment below.
- Remove the two left screws of the silver front panel.
- Separate the silver front panel from the main unit by pulling it gently.
- ⚠ Be careful, you can't remove silver front panel without removing first the hot water dispenser !
  - Loosen or remove the two screws of the hot water dispenser.
  - Remove the silver front panel. Take care of hot water dispenser and left and right nicks of the panel.

## Step 5 — Removing the touch panel frame



- Remove the three screws of the touch panel frame.

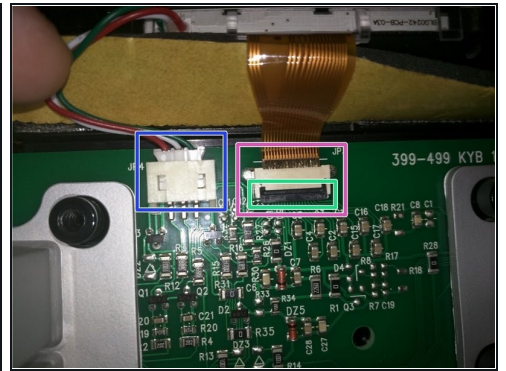
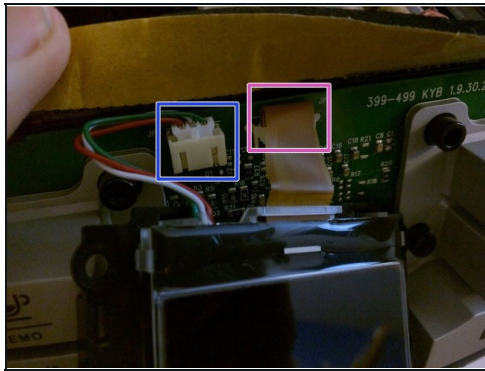
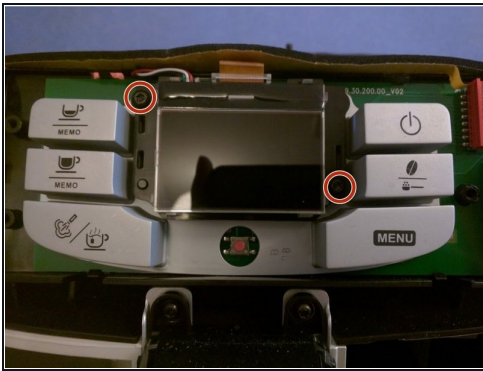
## Step 6 — Removing the LCD frame



- Remove the LCD black plastic frame. It is simply placed into two necks.

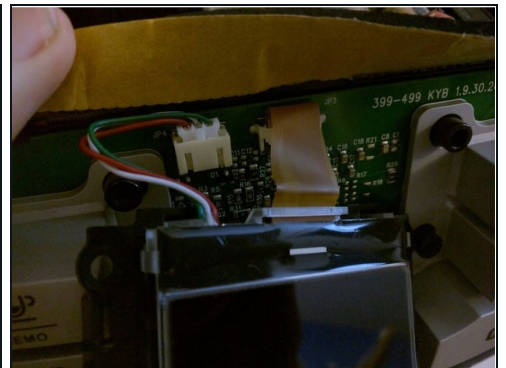
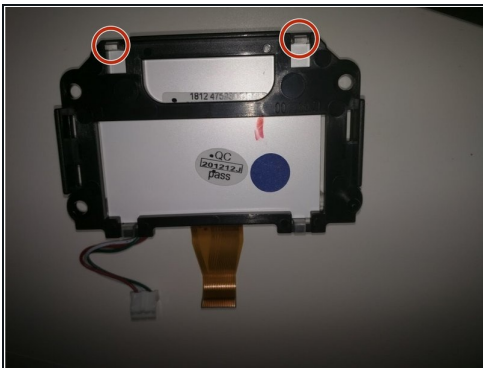


## Step 7 — Removing LCD screen



- Remove the two screws on each side of the LCD screen.
- Disconnect the first connector.
- Disconnect the other cable.
- To disconnect the second cable, you need to lift the flap of the connector.

## Step 8 — Install the new LCD screen



- Disassemble the old LCD screen from support frame.
- Clip the new LCD screen to the LCD support frame.
- Reconnect the two cables.

## Step 9 — You've done it !



- Reconnect power cable and switch on the appliance. Colors (yellow, green) from the screen should be back :)
- ① If it doesn't work, check connection after turning off the power.
- ★ To reassemble the appliance, follow this guide in reverse order.

---

To reassemble your appliance, follow the instructions in reverse order.