



Konica Minolta Dimage Z6 LCD Screen Replacement

The LCD screen of the Konica Minolta Dimage Z6...

Written By: Ethan Anderson



INTRODUCTION

The LCD screen of the Konica Minolta Dimage Z6 has been known to cause issues and need replacement. This guide walks through the steps needed to replace a cracked or damaged LCD screen. Please refer to these links for safety precautions when dealing with [batteries](#) or [broken screens](#).

TOOLS:

[Heavy-Duty Spudger](#) (1)

[Tweezers](#) (1)

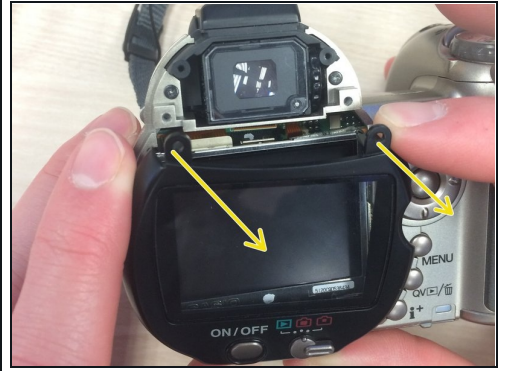
[Phillips #000 Screwdriver](#) (1)

Step 1 — LCD Screen



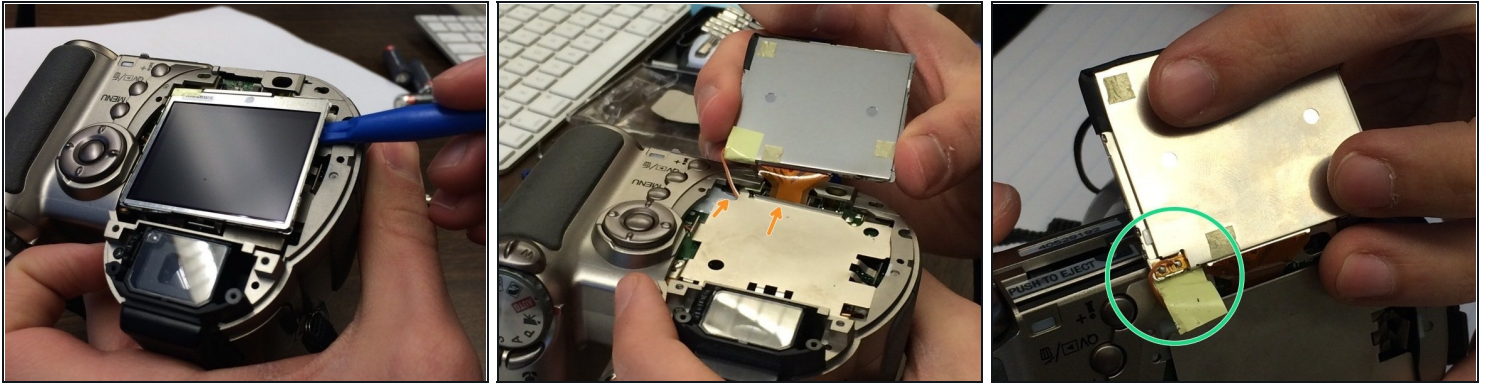
- Push the battery cover in and away from the camera.
- Remove all four batteries.
- Close the battery cover before continuing.

Step 2



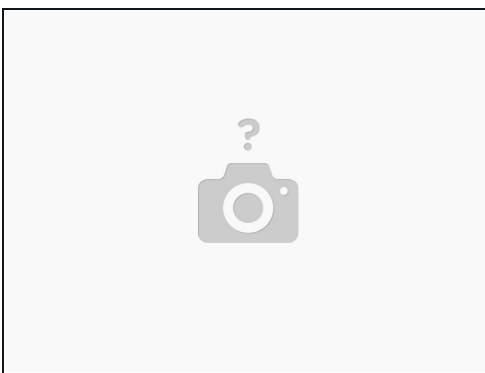
- Use a Phillips #000 screwdriver to remove the two black screws above the LCD screen.
⚠ The screws are small and fall out easily. You should take them out over a solid surface and set them aside somewhere safe.
- Remove the black view protector.
- Remove the screen cover by applying slight force at the top, then pulling away from the camera.

Step 3



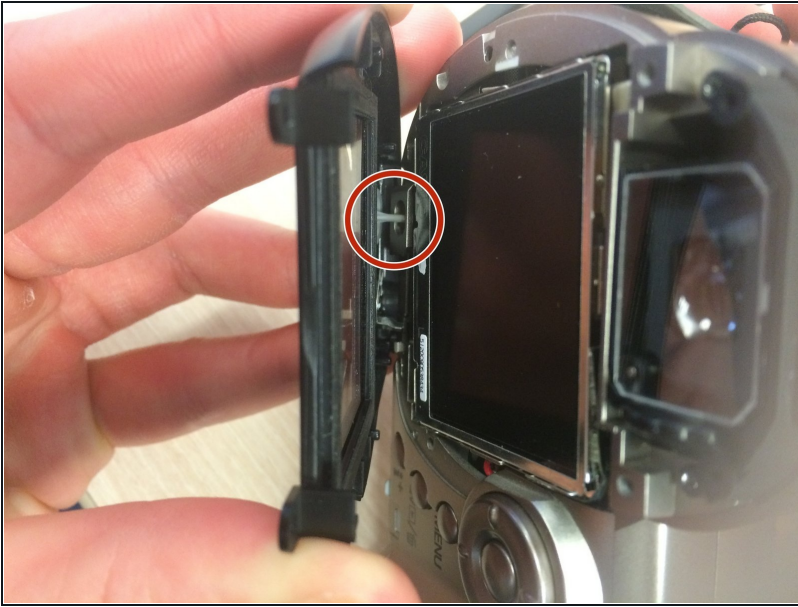
- Carefully use the spudger to pop the LCD screen out of the bracket.
- The LCD screen should still be attached by orange ribbon cable and two wires, one orange and one white.
- Use [tweezers](#) to carefully pull the ribbon cable from the logic board, not from the LCD screen.
- Peel back yellow tape on LCD screen to reveal where the two wires are attached. Use tweezers to detach the orange and white wires from the LCD screen.

Step 4



- Attach the wires to the new screen in the same spot they were attached to the old one.
- Attach the new screen's ribbon tape to the logic board underneath the metal plate.
- With the new screen attached, put it in place on the metal plate. You can now replace the screen cover.

Step 5



- As you start to reassemble, note the grey extension at the bottom of the black screen cover. Apply pressure to the bottom of the cover and slide upwards onto screen.

With the main screen cover in place, follow steps 1-3 in reverse to completely reassemble the device. If the new screen was attached correctly, the camera should function as normal.