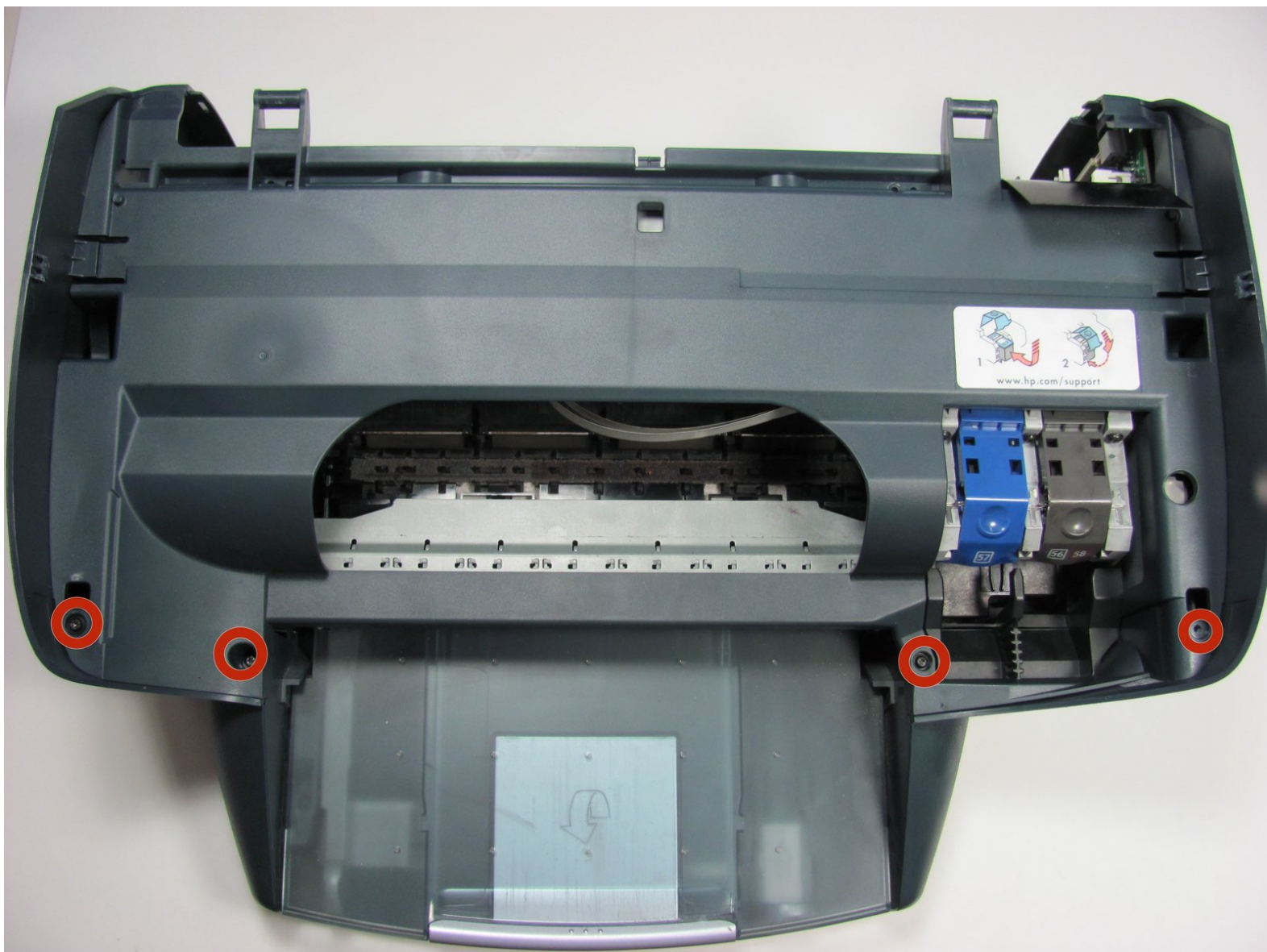




# Replacing the Carriage in the Photosmart All In One Printer

With this guide you will remove the old printer carriage and replace it with a new one.

Written By: Cody Long



## INTRODUCTION

You will need to remove the scanner tray before replacing the printer carriage. You can see a guide for this under **Removing Scanner Tray**.

After this step is completed you are now ready to follow the steps in order to replace the printer carriage.



### TOOLS:

- [T10 Torx Security Bit Screwdriver](#) (1)
- [TR10 Torx Security Screwdriver](#) (1)



### PARTS:

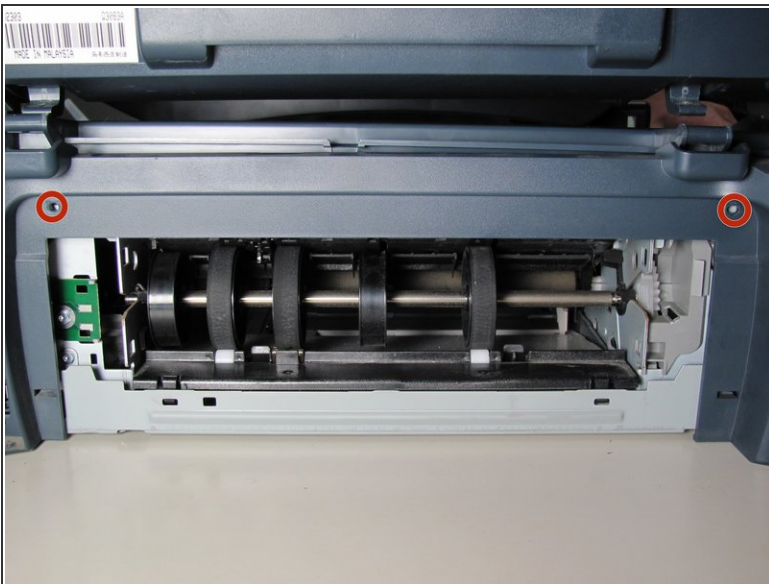
- [Printer Carriage](#) (1)

## Step 1 — Remove Back Panel



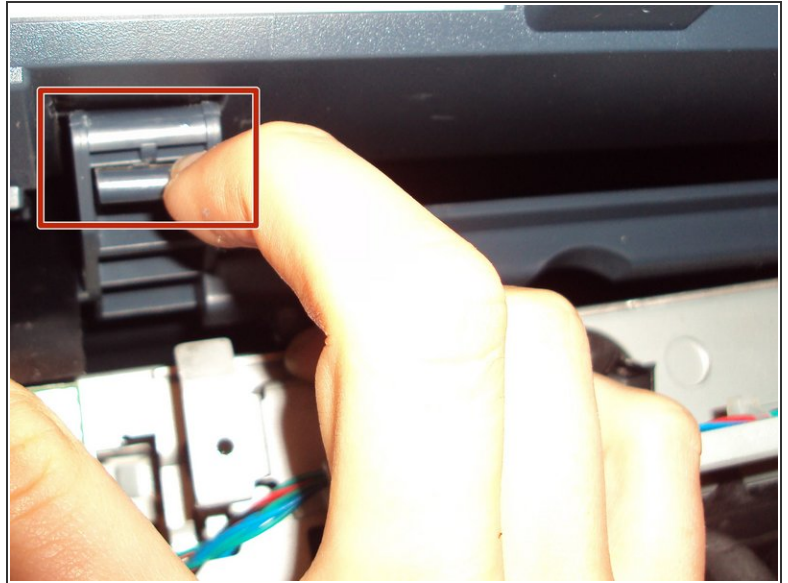
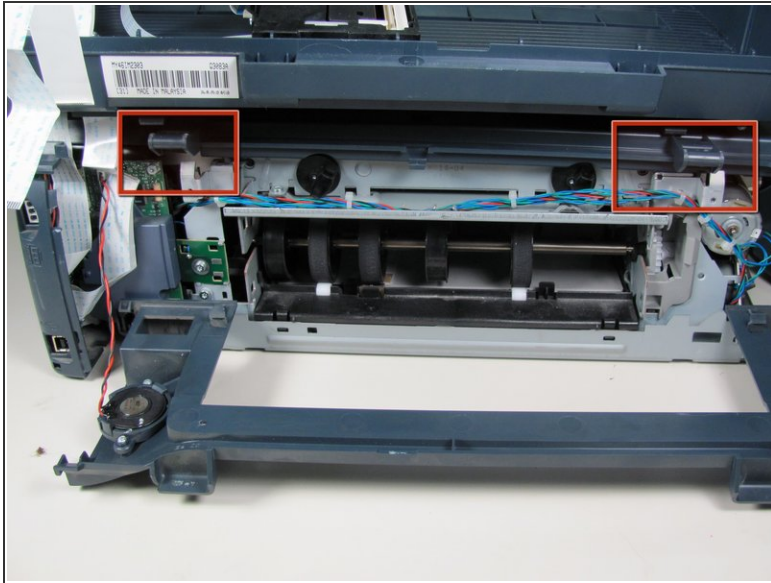
- Remove the back panel by inserting your fingers into the indentations next to the tabs. Press the tabs inward towards each other while pulling the back panel toward you.

## Step 2 — Remove Inner Back Pannel



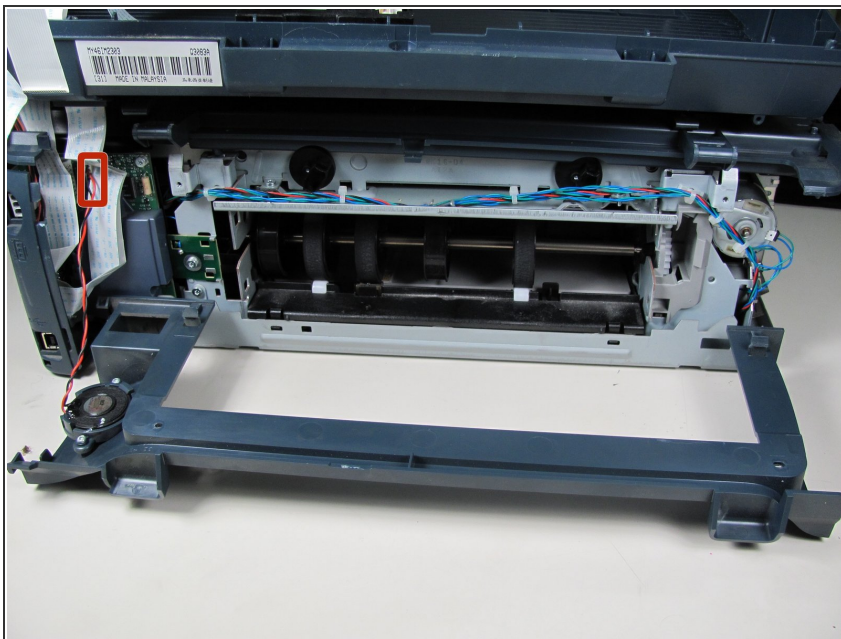
- Using the T10 Torx Security Bit Screwdriver, unscrew the screws on the upper left and right corners of the inner panel to remove the inner back panel.

### Step 3 — Remove Upper Portion



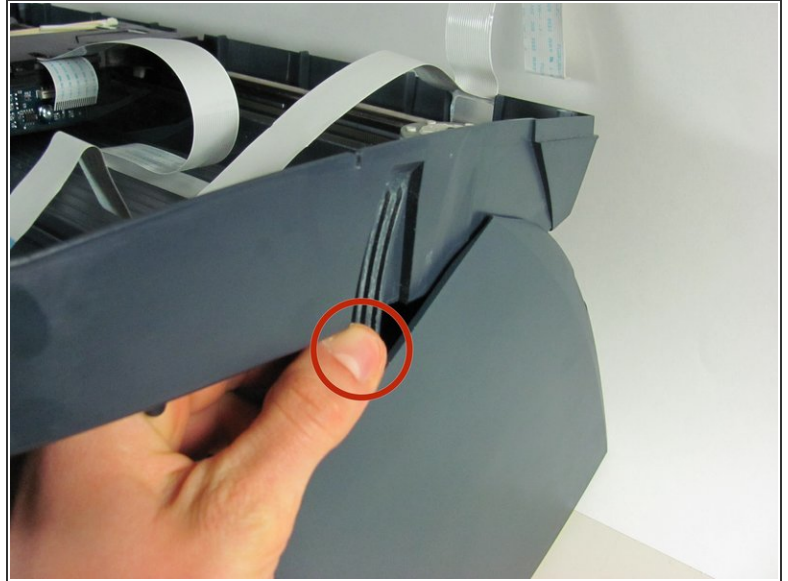
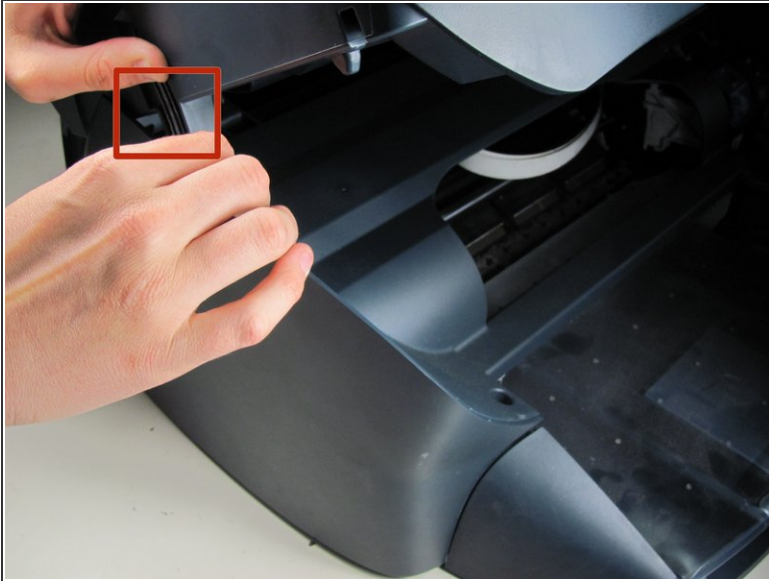
- Press down on the two plastic hinges to remove the upper portion of printer.

### Step 4 — Unplug Speaker Wire



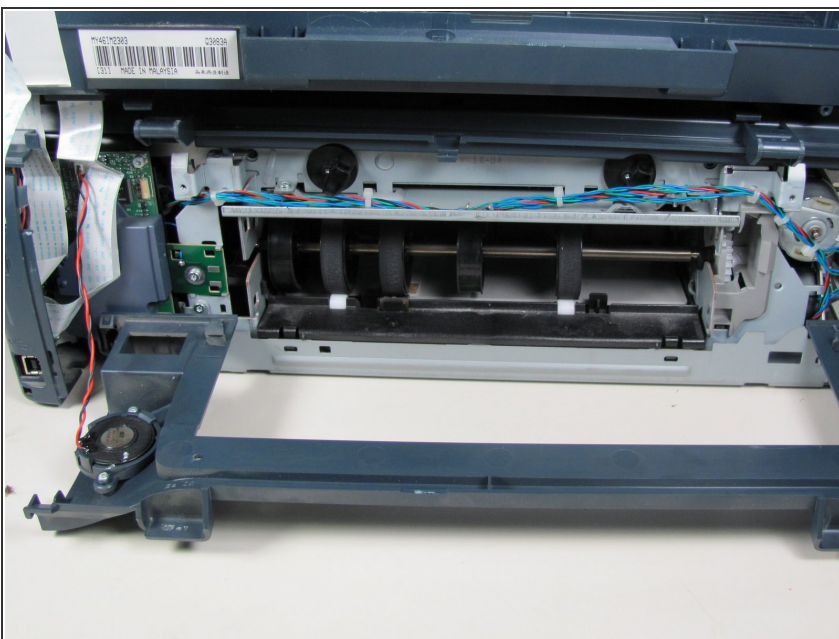
- Grasp the plastic plug on the end of the speaker wire, then gently pull the plug away from the printer until the wire is removed.

## Step 5 — Removing Scanner Tray



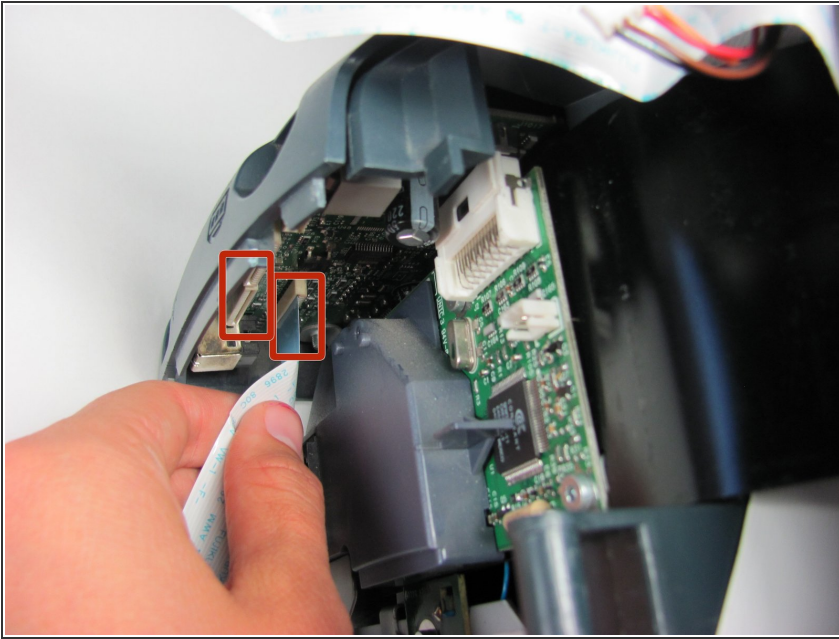
- Rotate the printer so the paper tray is facing towards you.
- Gently lift the scanner tray up and away from the printer.
- Press the gray plastic tabs inward to release the tabs from the printer.

## Step 6 — Removing Scanner Tray - cont.



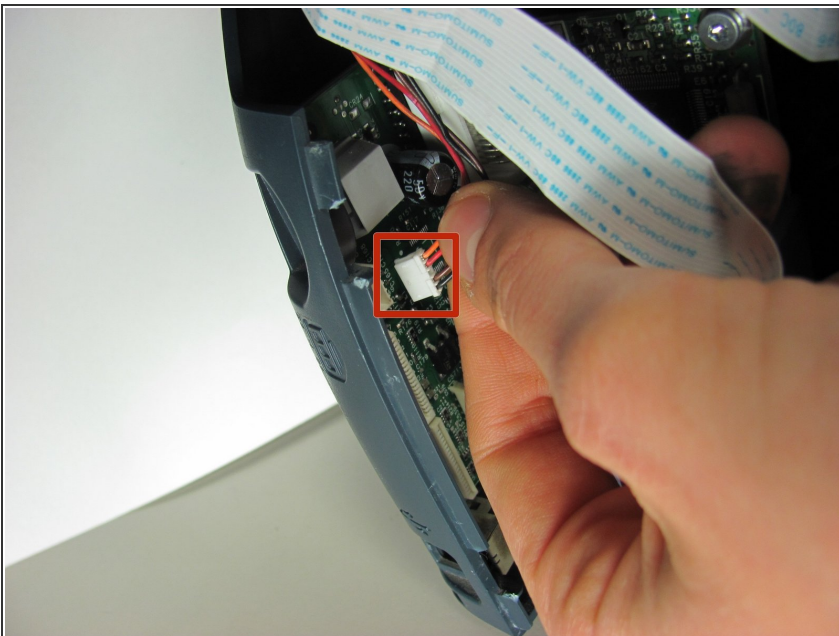
- Returning to the back of the printer, remove the scanner from the back hinges.
- ⓘ With pressure applied, the scanner will detach easily.

## Step 7



- Gently grasp and unplug the two white ribbon cables from the printer body.
- ⓘ Be sure to grasp the cable at the connector and not to pull on the wires themselves.

## Step 8



- Unplug the white plastic multi-wire connector (with orange, black, red, and brown wires) from its port.
- ⓘ Be sure to grasp the white connector and not to pull on the wires themselves.

## Step 9 — Detaching the Scanner Tray



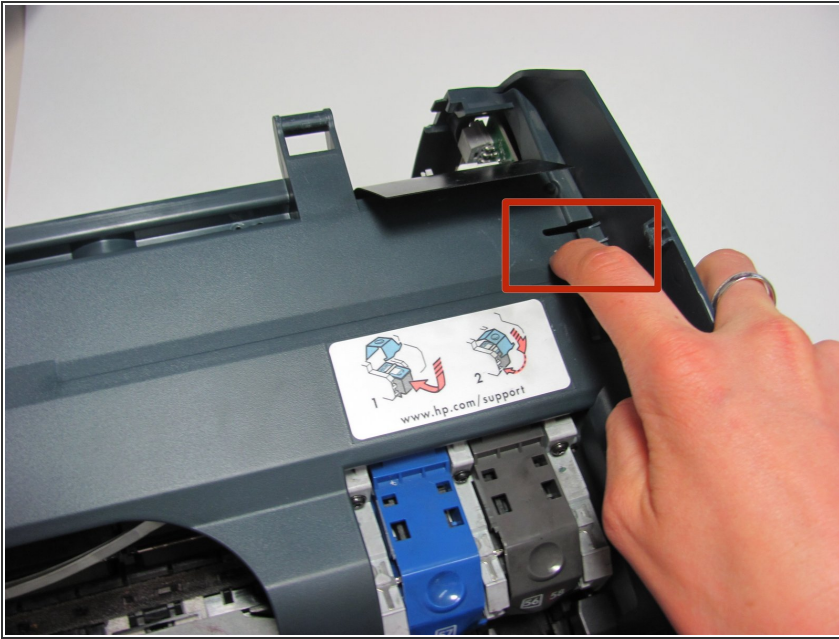
- Detach the scanner tray from the printer by lifting the scanner tray off the printer body.

## Step 10 — Printer Carriage



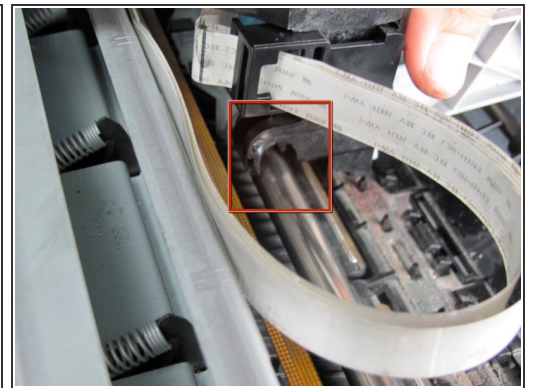
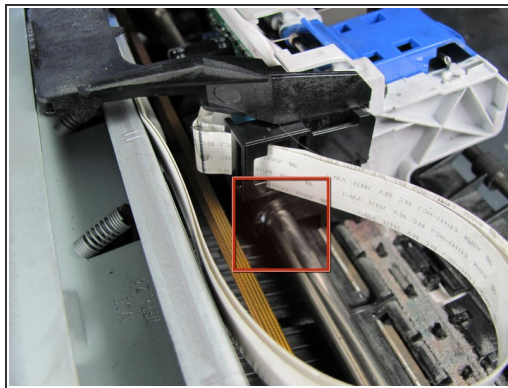
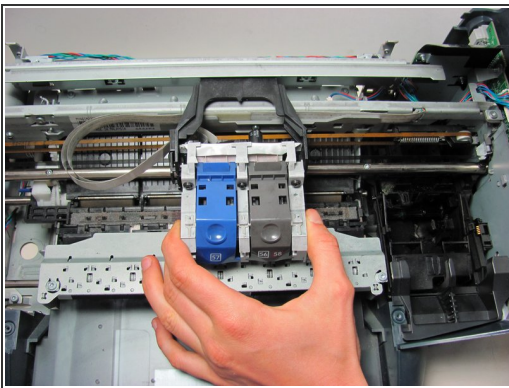
- Remove printer carriage cover by unscrewing four black coarse thread T-10 torx screws marked with red circles.

## Step 11




- Depress the plastic tabs marked in red to release the cover from the sides.

## Step 12

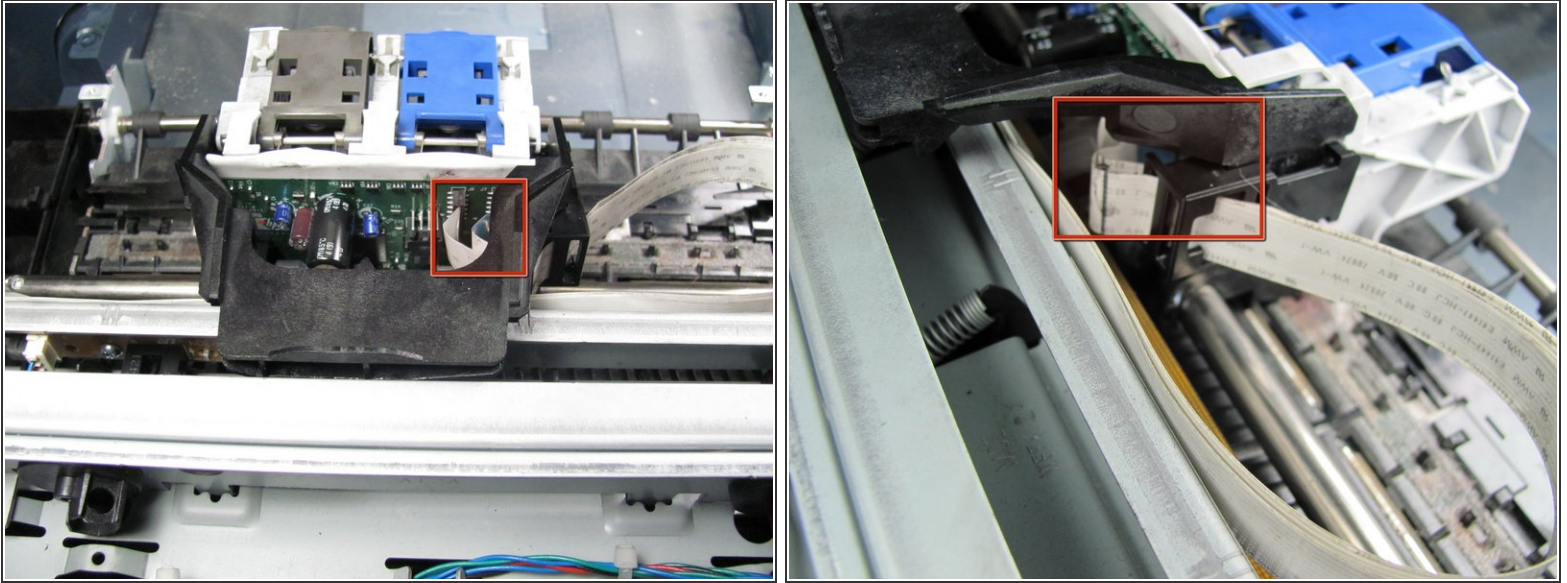


- Slide the printer carriage to the center of the printer.
- Disconnect the printer carriage from the rod one side at a time by pulling upward from the bottom.

 Unhooking the printer carriage is difficult and will require a fair amount of force.

 The plastic strip that guides the carriage is fragile and can be broken easily.

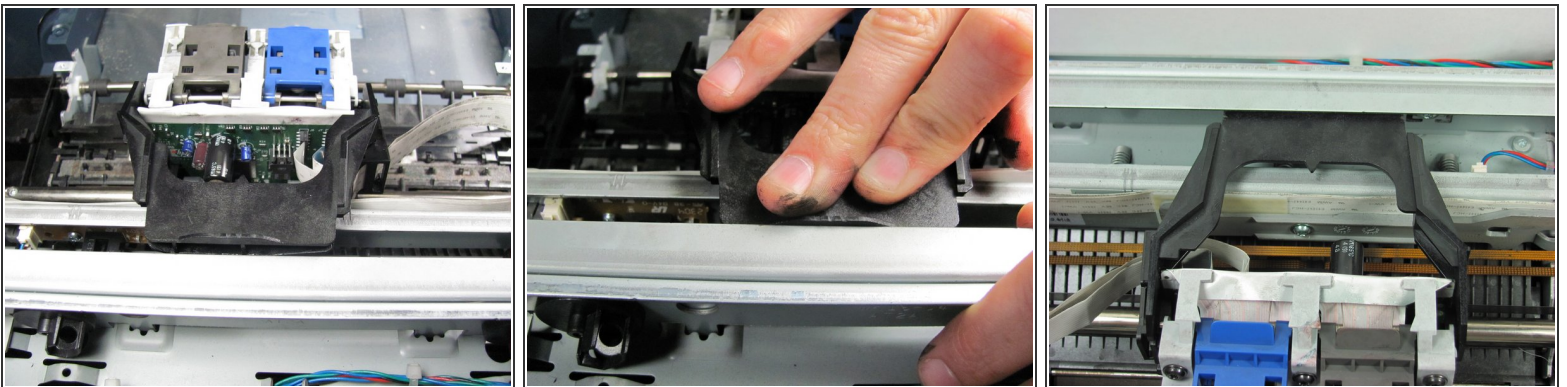
## Step 13




- Pull on the two white wire strips on the printer carriage to remove which are marked in red.

 Wire strips are fragile. Do not pull on ribbon directly. Pull from connection to carriage.

## Step 14



- Place new printer carriage on the carriage rod one side at a time.
-  For proper reassembly, place the printer carriage's black lip beneath the overhanging metal flap located at the back of the printer.

You have now successfully replaced your printer carriage for the Photosmart All In One Printer Scanner.

Follow these instructions in reverse order to reassemble your device.