



LeapFrog LeapPad Platinum Screen Replacement

Use this guide to remove all of the electrical...

Written By: David Lee



INTRODUCTION

Use this guide to remove all of the electrical components inside your LeapPad Platinum tablet and then replace the touch screen.

TOOLS:

[iFixit Opening Tool](#) (1)

[Phillips #1 Screwdriver](#) (1)

Step 1 — Battery



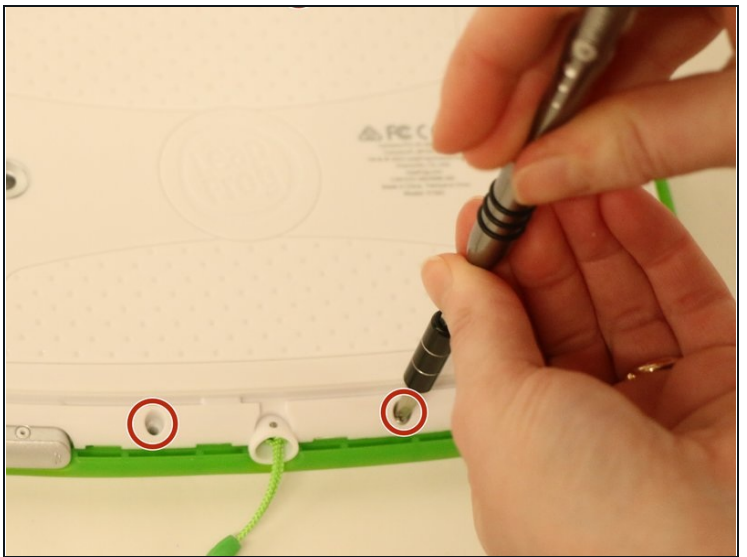
- Place your tablet on a flat surface with the screen facing down.

Step 2



- Using a plastic opening tool, pry off the plastic border by inserting it in the space between the green bumper and the white plastic on the edge of the tablet.
- ⓘ The border snaps into place, so don't be too worried if you hear a cracking noise while prying it off.

Step 3



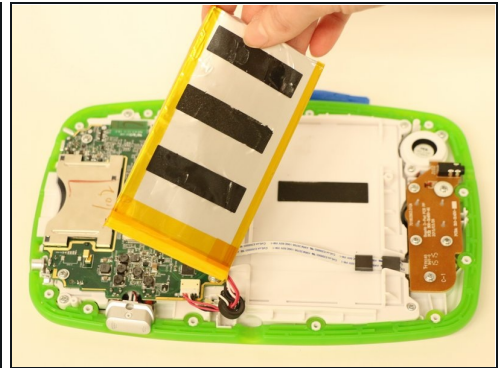
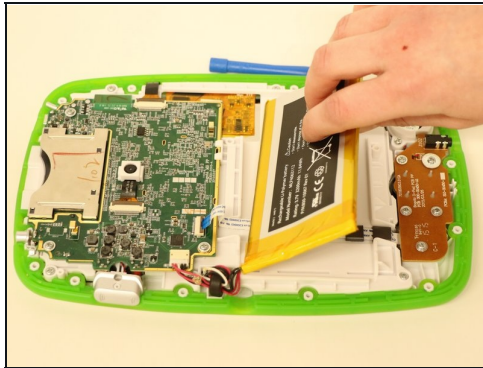
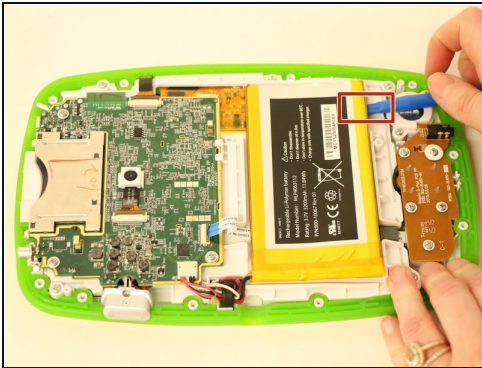
- Remove the 11 Phillips screws (8.0 mm) located around the edge of the back cover with a Phillips screwdriver.

Step 4



- Pull the back cover off of your device.

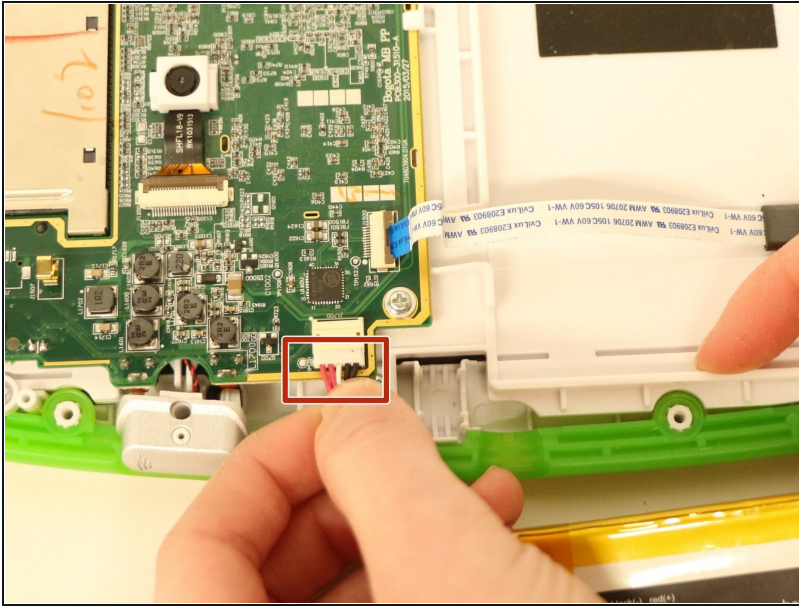
Step 5



- Wedge a plastic opening tool underneath the battery and lift the battery up.

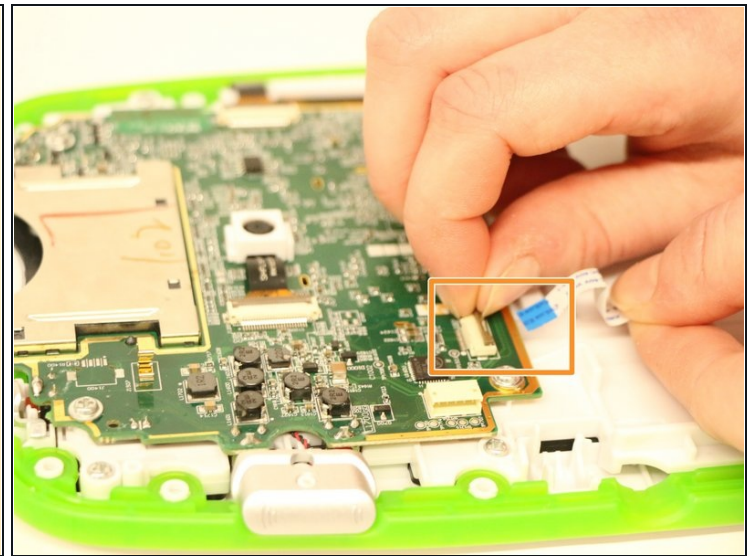
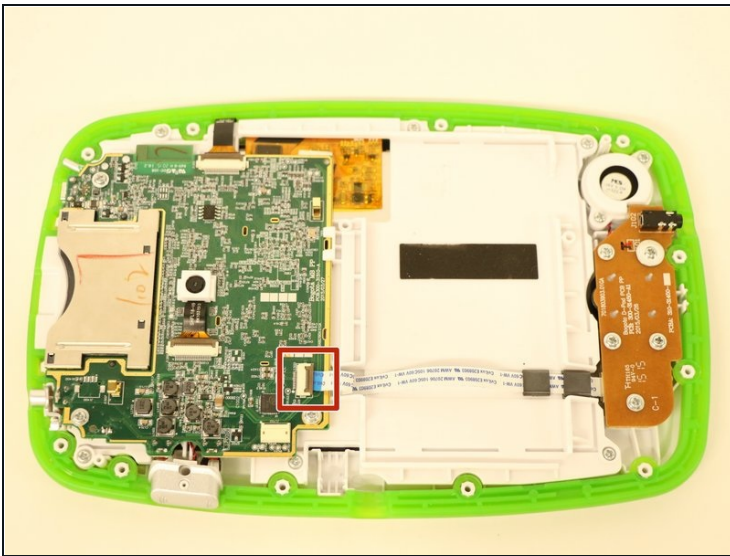
ⓘ The battery is held in place by an adhesive strip, so it can be difficult to pry off.

Step 6



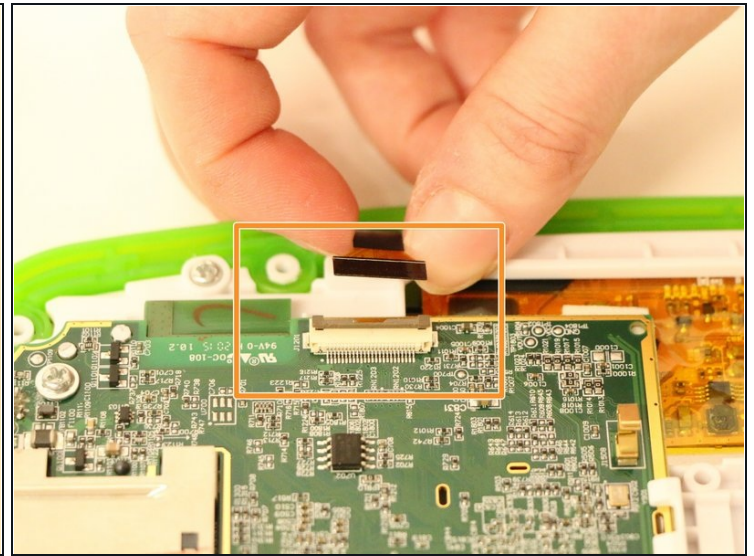
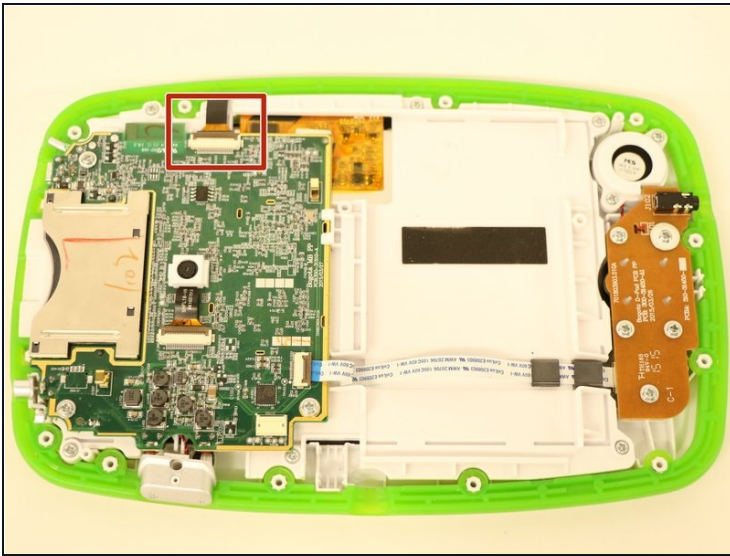
- The battery has red, black, and white wires that are all connected to the motherboard through a plastic clip. Unplug this plastic clip to fully remove the battery from your device.

Step 7 — Motherboard



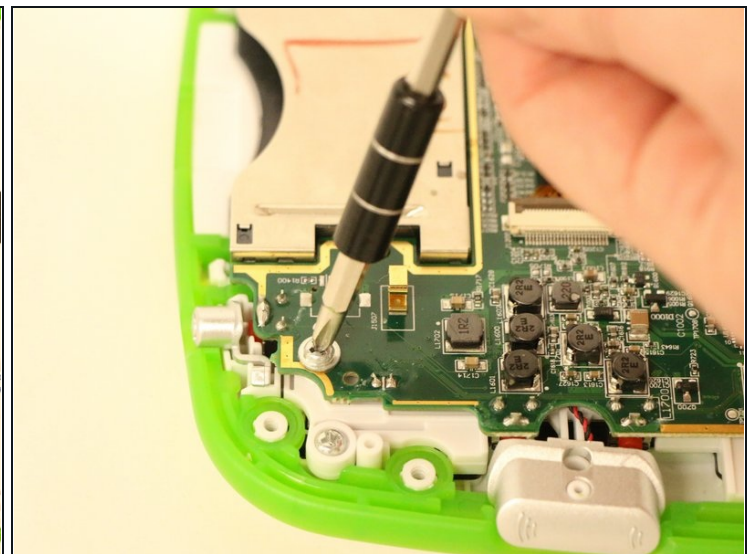
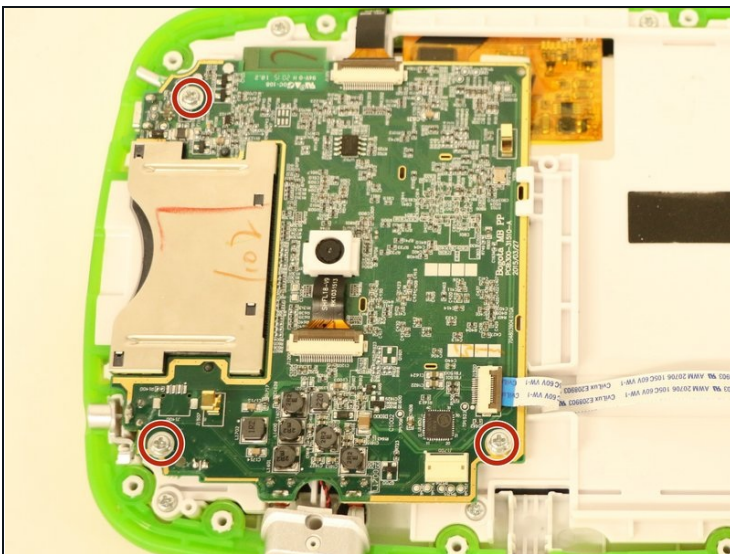
- Locate the white ribbon cable connected to the motherboard.
- Disconnect the cable by flipping up the metal tab on the connector and sliding the cable out.

Step 8



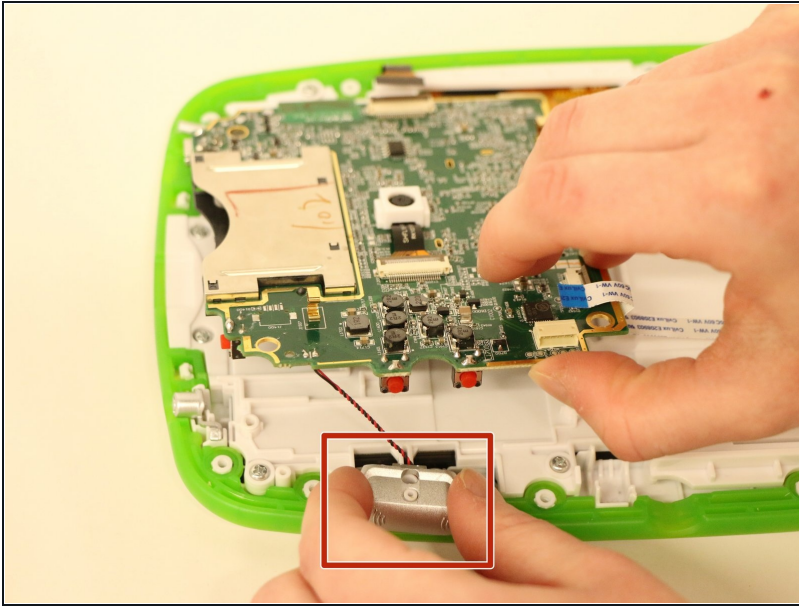
- Locate the black ribbon cable which is connected to the motherboard.
- Disconnect the cable by flipping up the metal tab on the connector and sliding the cable out.

Step 9



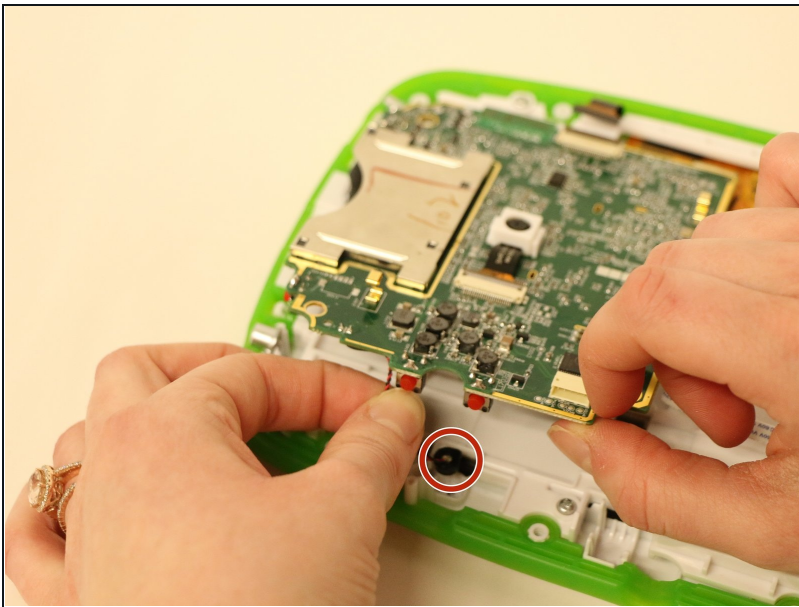
- Remove the three 4.0 mm Phillips screws located in the corners of the motherboard.

Step 10



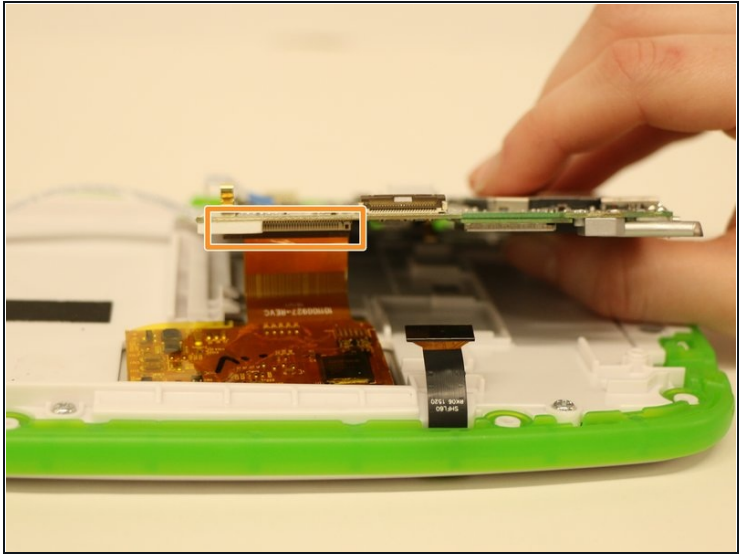
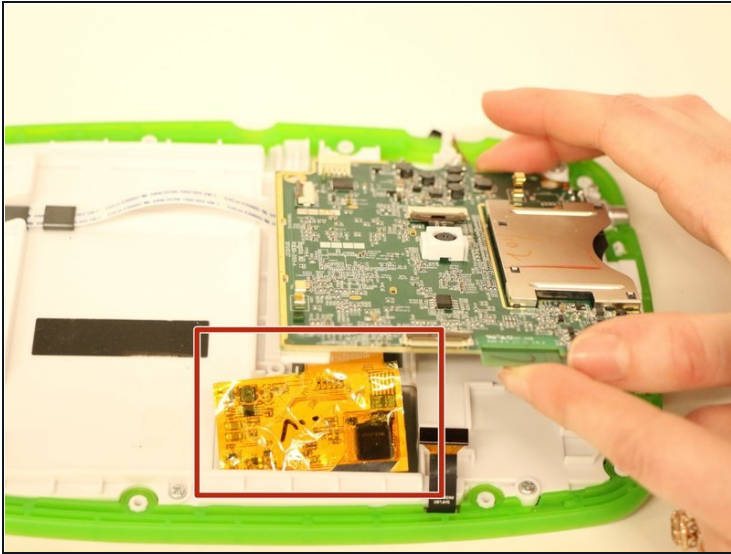
- Lift up the front edge of the motherboard.
- Lift the volume-control button out of the device and set it aside.

Step 11



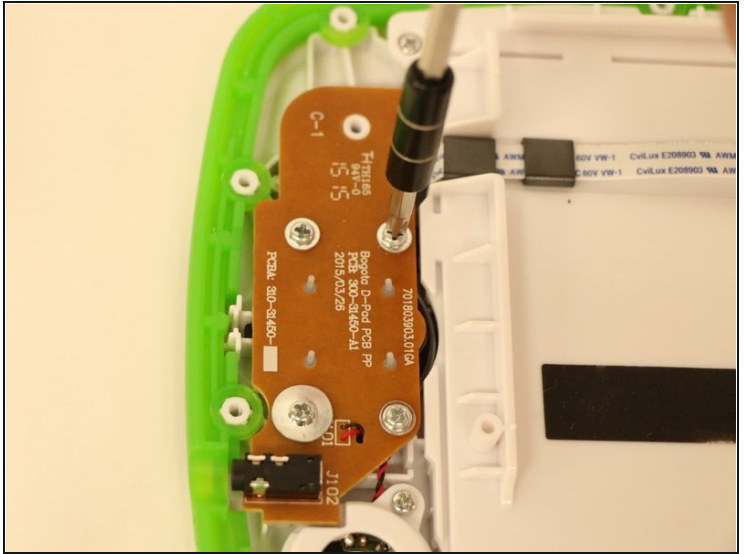
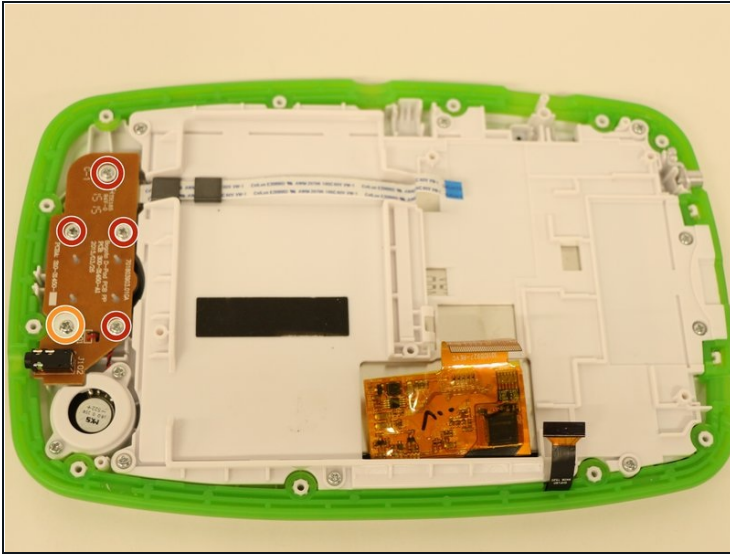
- Gently tug upwards on the red and black twisted wires located near the button you just removed to release the black rubber base they are connected to from the device.
- ① This does not take much force, so it is likely that this piece will pop out of place when initially lifting the motherboard.

Step 12



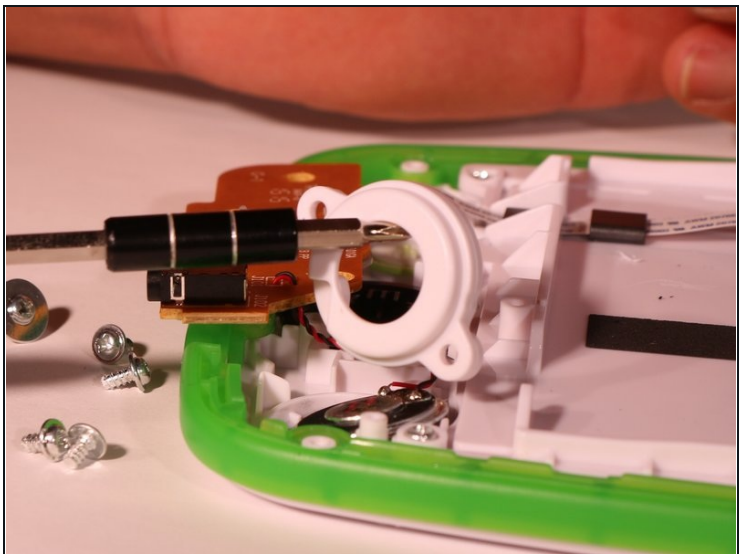
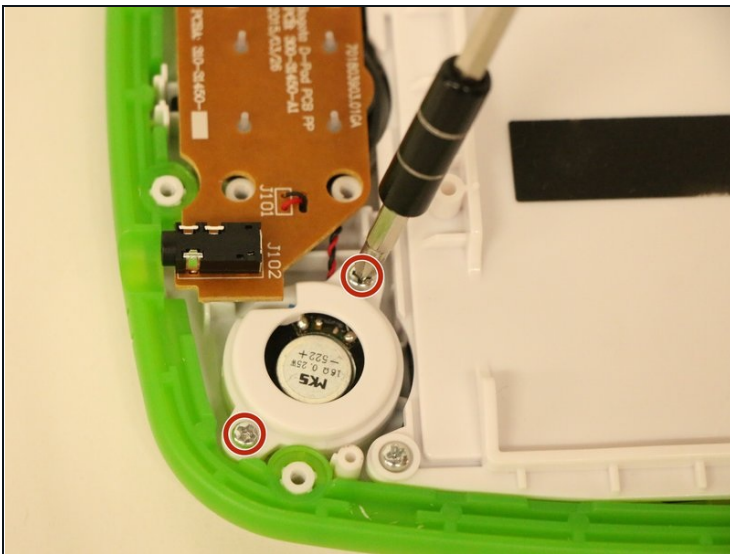
- Rotate your device 180 degrees so the the motherboard is on your right-hand side and gently lift the front edge of the motherboard to reveal an orange sheet of plastic.
- Disconnect the orange sheet from the motherboard by lifting the metal tab on the connector (as you did for the cables in steps 1 and 2), and lift the motherboard completely out of the device.

Step 13 — Speaker



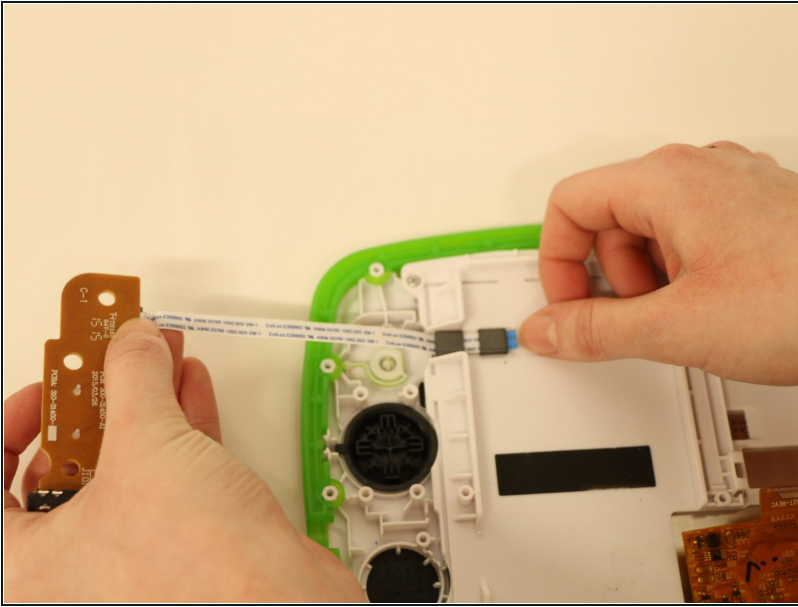
- Remove the brown speaker board located on the left side of the LeapPad by removing the following screws holding it in place:
 - Four 3.0mm Phillips screws
 - One 7.0mm Phillips screw

Step 14



- Locate the circular plastic speaker cover, remove the two 5.0mm Phillips screws holding it in place, and gently lift the cover away from the device.

Step 15

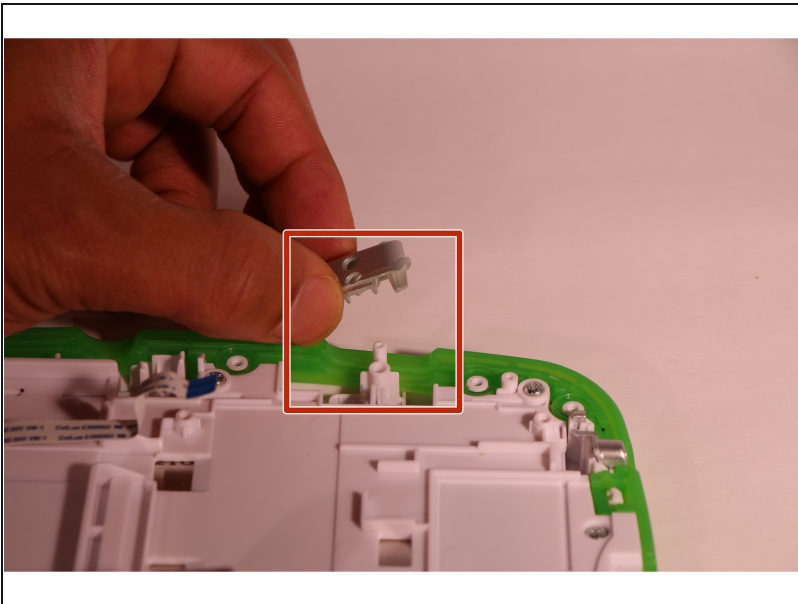


- Lift up the speaker board and locate the white ribbon attached to its underside.
- Fully remove the speaker board from the device by gently pulling the ribbon cables out of the slot.

⚠ Be gentle when working with the ribbon as it can be damaged easily.

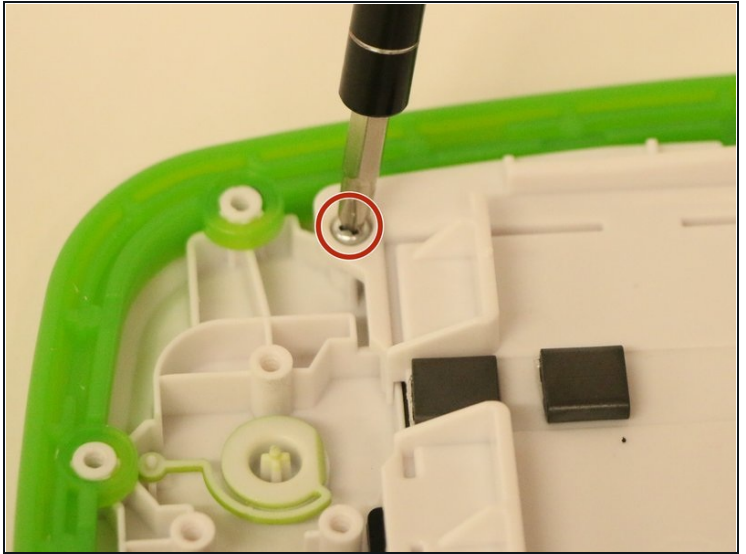
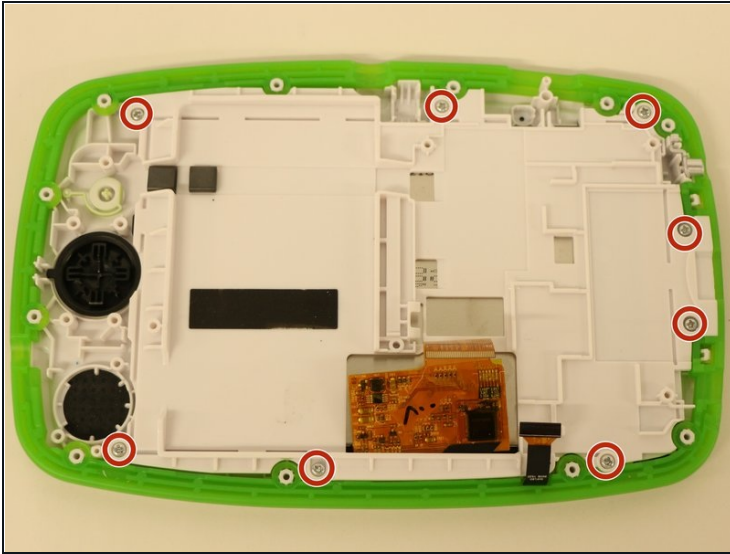
ⓘ [Tweezers](#) or a pointed plastic spudger will help guide the ribbon back through the black tabs when reassembling your device.

Step 16 — Touch Screen



- Remove the power and the volume buttons from their cradles.
- ⓘ This does not require any tool, just lift them out and put them in a secure place.

Step 17

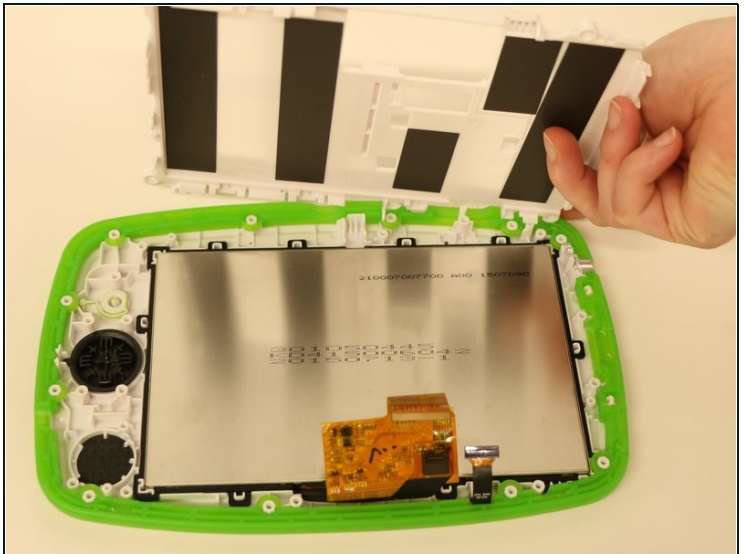
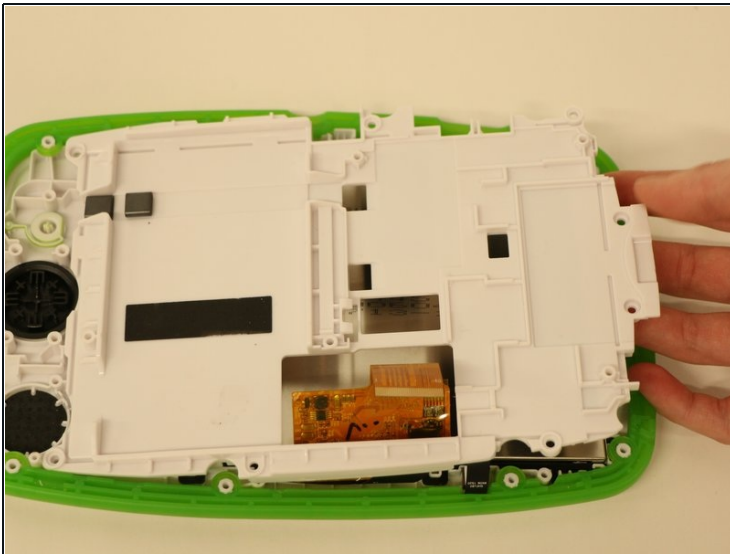


- Remove the eight 4.0 mm screws for the plastic backing that covers the screen.

⚠ Be certain to keep track of your screws.

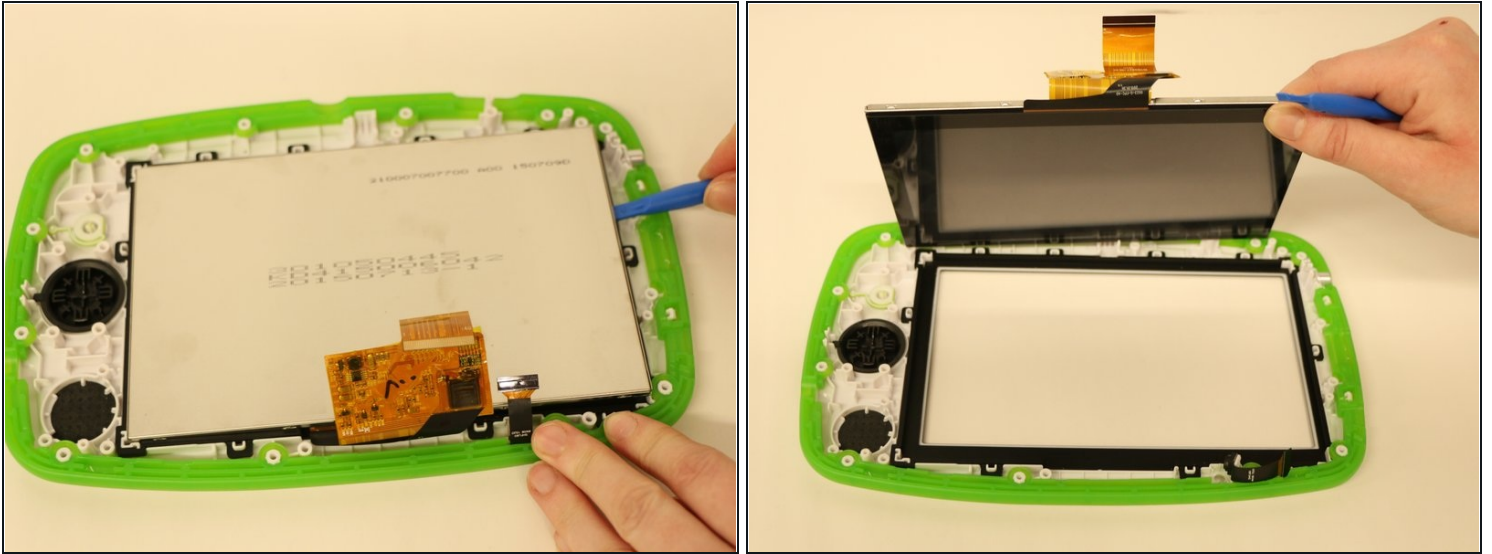
ⓘ The directional pad is now loose and can also be removed.

Step 18



- Carefully lift out the plastic plate and set it aside.

Step 19



- The screen is now completely accessible and can be lifted out of its cradle. Use the plastic spudger to safely and carefully lift the screen up.

⚠ Screens are very fragile so be sure to have a safe and secure place to put it, safely away from any magnetic devices.

To reassemble your device, follow these instructions in reverse order.